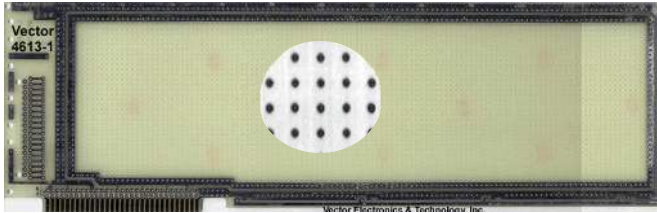


### IBM PC, XT

Plugbord



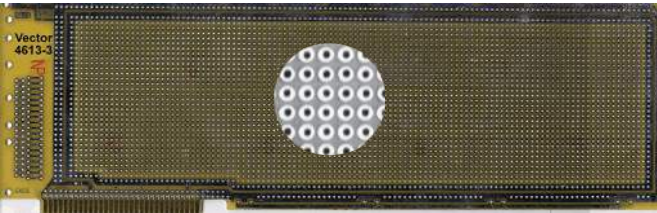
#### 4613-1

**Circuit Pattern:**  
**Contacts:**  
**Width/Thick:**  
**Height:**  
**16-Pin DIP Capacity:**  
**Material:**  
**V/G Terminals:**  
**Socket Pins:**  
**Extender:**  
**Hole Diameter:**

#### IBM PC, XT

Peripheral Buses  
 31/62 @ .1" Ctrs  
 Ni/Gold  
 13.25" / .062"  
 4.2"  
 93  
 FR4 Epoxy Glass  
 T44, T46, T49, T68  
 R32  
 3690-26  
 .042"

- 0.100" grid
- Voltage and ground buses around board perimeter, both sides
- Auxiliary bus line along lower edge of board, both sides
- I/O mounting area for 37-pin D-subminiature and ribbon cable connectors
- Mounting Bracket and hardware kit included (HD36B)



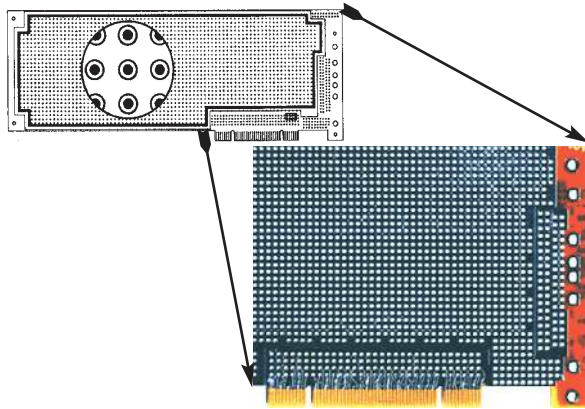
#### 4613-3

**Circuit Pattern:**  
**Contacts:**  
**Width/Thick:**  
**Height:**  
**16-Pin DIP Capacity:**  
**Material:**  
**V/G Terminals:**  
**Socket Pins:**  
**Extender:**  
**Hole Diameter:**

#### IBM PC, XT

Pad-Per-Hole  
 31/62 @ .1" Ctrs  
 Ni/Gold  
 13.25" / .062"  
 4.2"  
 154  
 FR4 Epoxy Glass  
 T44, T46, T49, T68  
 R32  
 3690-26  
 .042"

- 0.100" grid
- Plated-thru holes
- Voltage and ground buses around board perimeter
- I/O mounting area for 37-pin D-subminiature and ribbon cable connectors
- Mounting Bracket and hardware kit included (HD36B)



### PCI

#### 4624-3

#### 4624-4

(Same as 4624-3 but no overall GND between pads)

**Circuit Pattern:**  
**Contacts:**  
**Width/Thick:**  
**Height:**  
**16-Pin DIP Capacity:**  
**Material:**  
**V/G Terminals:**  
**Extender:**  
**Hole Diameter:**

#### PCI Expansion Card

Pad-Per-Hole & Peripheral Buses  
 120 @ 0.05" Ctrs  
 Ni/Gold  
 12.28" (std. size inc. extender portion of 1.06") / .062"  
 4.5"  
 79 plus PGAs  
 FR4 Epoxy Glass  
 T125, T126  
 3690-34-5V or -3V  
 .042"

- 0.100" grid
- For 32-bit environment, ISA format, 4 layer board
- Universal etched tab geometry fits both 3.3V and 5.0V tab notch patterns
- Mounting Bracket included
- Peripheral buses for voltage and ground distribution
- Isolated pads with plated thru holes
- I/O mounting area for D-subminiature and ribbon cable connectors

### Mounting Bracket Kit

Mounting Bracket Kit with hardware for IBM PC, AT & EISA P.C. boards.  
 Pattern has "knock out" cutouts for "D" subminiature connectors.

### HD36B

