

## Evaluating the **ADM3260** Hot Swappable Dual I<sup>2</sup>C Isolators with Integrated DC-to-DC Converter

### FEATURES

- Full-featured evaluation kit for **ADM3260**
- Screw terminals for easy connection
- Multiple test points for easy node access
- Knob adjustable isolated dc-to-dc output voltage
- Special layout to minimize electromagnetic interference (EMI)

### EVALUATION KIT CONTENTS

**EVAL-ADM3260EBZ** board

### RELATED DOCUMENTS

**ADM3260** data sheet

### GENERAL DESCRIPTION

This user guide describes information related to the **EVAL-ADM3260EBZ** evaluation board. The evaluation board provides all of the support circuitry required for users to evaluate the **ADM3260** hot swappable dual I<sup>2</sup>C isolators with integrated dc-to-dc converter.

The **ADM3260** data sheet provides additional information and should be consulted when using the **EVAL-ADM3260EBZ** evaluation board.

Based on the *isoPower* technology, the integrated isolated dc-to-dc converter on the **ADM3260** uses high frequency switching elements to transfer power through its transformer. Special care is taken during board layout to meet emissions standards. See the **AN-0971 Application Note** for board layout recommendations.

### EVALUATION BOARD CONNECTION DIAGRAM



Figure 1. **EVAL-ADM3260EBZ** Evaluation Board

**TABLE OF CONTENTS**

Features .....	1	Evaluation Board Hardware.....	3
Evaluation Kit Contents.....	1	Evaluation Board Schematic .....	4
Related Documents .....	1	Evaluation Board Layout Layers.....	5
General Description .....	1	Ordering Information.....	7
Evaluation Board Connection Diagram .....	1	Bill of Materials.....	7
Revision History .....	2		

**REVISION HISTORY**

**3/14—Revision 0: Initial Version**

## EVALUATION BOARD HARDWARE

The [EVAL-ADM3260EBZ](#) evaluation board is designed to be intuitive and easy to understand. All the connectors and test points are clearly labeled. The functions of the unique components are listed in Table 1.

**Table 1. Unique Component Functions**

<b>Component</b>	<b>Description</b>
S1	When connected to the PDIS pin of the <a href="#">ADM3260</a> , the S1 switch can control the enable and disable functions of the isolated dc-to-dc converter block of the device.
R4	When placed in the feedback loop of the isolated dc-to-dc converter block, R4 allows the user to adjust the output voltage on the VISO pin of the <a href="#">ADM3260</a> .

EVALUATION BOARD SCHEMATIC

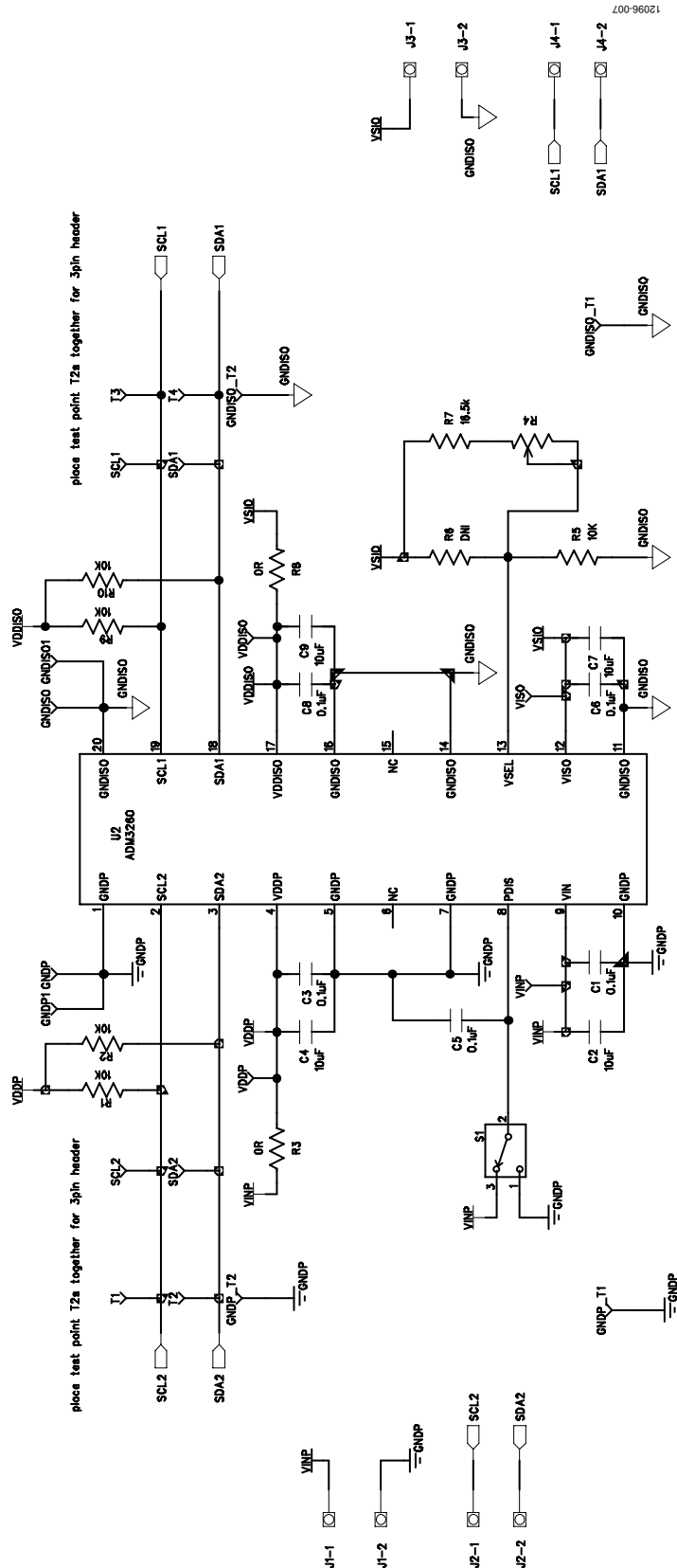


Figure 2. EVAL-ADM3260EBZ Evaluation Board Schematic

## EVALUATION BOARD LAYOUT LAYERS

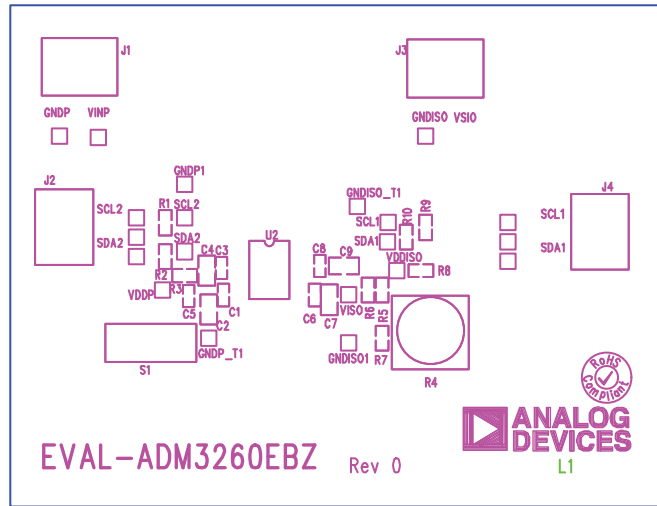


Figure 3. EVAL-ADM3260EBZ Evaluation Board Layout Layer, Top Silk Screen

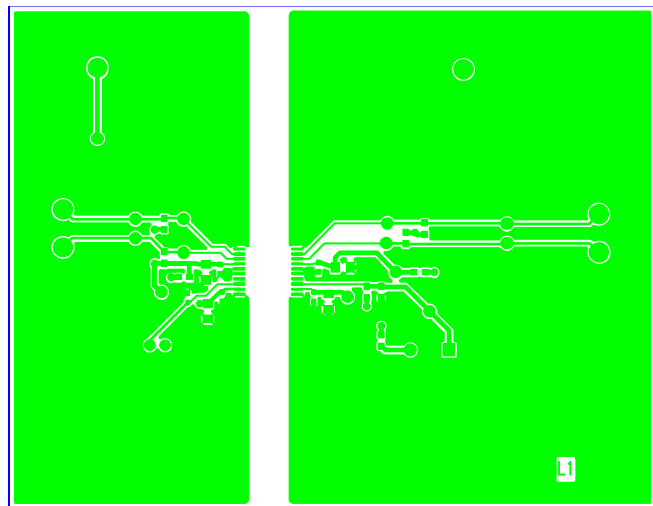
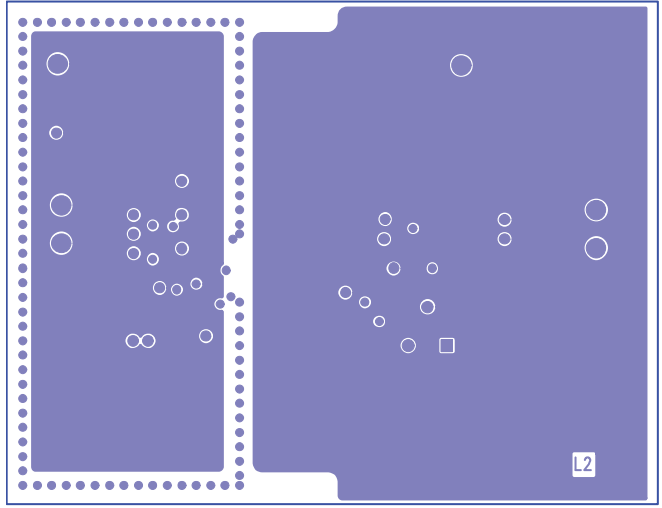
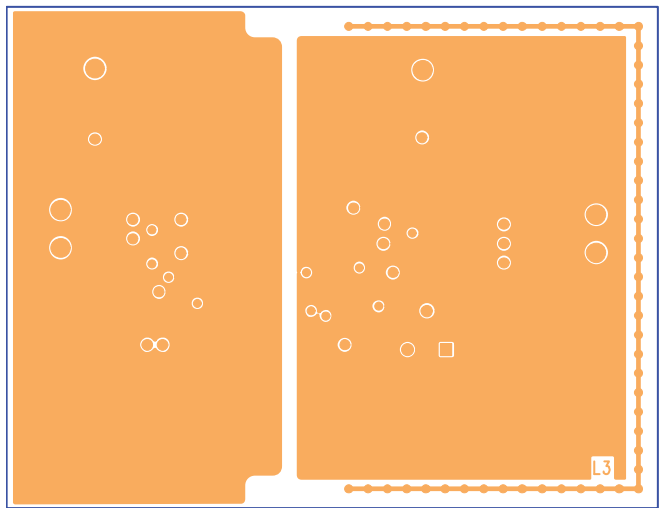


Figure 4. EVAL-ADM3260EBZ Evaluation Board Layout, Layer 1



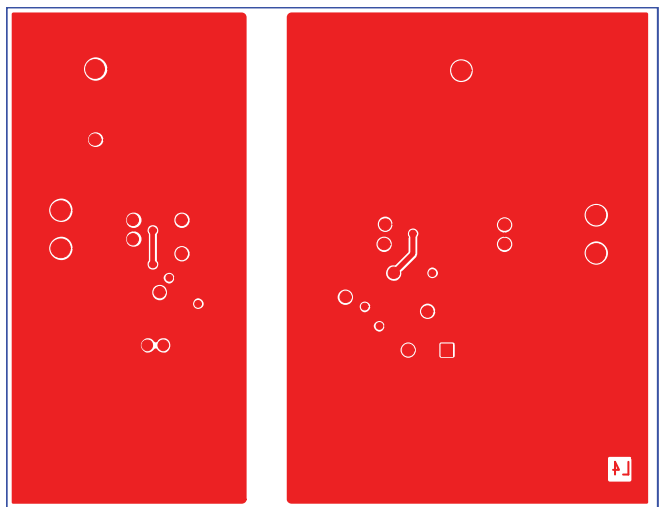
12096-005

Figure 5. EVAL-ADM3260EBZ Evaluation Board Layout, Layer 2



12096-003

Figure 6. EVAL-ADM3260EBZ Evaluation Board Layout, Layer 3



12096-006

Figure 7. EVAL-ADM3260EBZ Evaluation Board Layout, Layer 4

## ORDERING INFORMATION

## BILL OF MATERIALS

Table 2.

Designator	Value <sup>1</sup>	Description	Manufacturer <sup>2</sup>	Part Number	Stock Code
C1	0.1 $\mu$ F	Capacitor, 0.1 $\mu$ F, 16 V, X7R	KEMET	C0402C104K4RAC	FEC 1288252
C2	10 $\mu$ F	10 $\mu$ F capacitor, 0805, X7R, 6.3 V	Taiyo Yuden	JMK212B7106KG-T	FEC 2112846
C3	0.1 $\mu$ F	Capacitor, 0.1 $\mu$ F, 16 V, X7R	KEMET	C0402C104K4RAC	FEC 1288252
C4	10 $\mu$ F	10 $\mu$ F capacitor, 0805, X7R, 6.3 V	Taiyo Yuden	JMK212B7106KG-T	FEC 2112846
C5	0.1 $\mu$ F	Capacitor, 0.1 $\mu$ F, 16 V, X7R	KEMET	C0402C104K4RAC	FEC 1288252
C6	0.1 $\mu$ F	Capacitor, 0.1 $\mu$ F, 16 V, X7R	KEMET	C0402C104K4RAC	FEC 1288252
C7	10 $\mu$ F	10 $\mu$ F capacitor, 0805, X7R, 6.3 V	Taiyo Yuden	JMK212B7106KG-T	FEC 2112846
C8	0.1 $\mu$ F	Capacitor, 0.1 $\mu$ F, 16 V, X7R	KEMET	C0402C104K4RAC	FEC 1288252
C9	10 $\mu$ F	10 $\mu$ F capacitor, 0805, X7R, 6.3 V	Taiyo Yuden	JMK212B7106KG-T	FEC 2112846
GNDISO	N/A	Test point	FEC	FEC 240-333	FEC 240-333
GNDISO1	N/A	Test point	FEC	FEC 240-333	FEC 240-333
GNDISO_T1	DNI	Do not install	FEC	FEC 240-333	DNI
GNDISO_T2	DNI	Do not install	FEC	FEC 240-333	DNI
GNDP	N/A	Test point	FEC	FEC 240-333	FEC 240-333
GNDP1	N/A	Test point	FEC	FEC 240-333	FEC 240-333
GNDP_T1	DNI	Do not install	FEC	FEC 240-333	DNI
GNDP_T2	DNI	Do not install	FEC	FEC 240-333	DNI
J1	N/A	2-pin terminal block (5 mm pitch)	Campden	CTB5000/2	FEC 151789
J2	N/A	2-pin terminal block (5 mm pitch)	Campden	CTB5000/2	FEC 151789
J3	N/A	2-pin terminal block (5 mm pitch)	Campden	CTB5000/2	FEC 151789
J4	N/A	2-pin terminal block (5 mm pitch)	Campden	CTB5000/2	FEC 151789
R1	10 k $\Omega$	Resistor, 0603, 1%, 10 k $\Omega$	Vishay Draloric	CRCW060310K0FKEAHP	FEC 1738918
R2	10 k $\Omega$	Resistor, 0603, 1%, 10 k $\Omega$	Vishay Draloric	CRCW060310K0FKEAHP	FEC 1738918
R3	0 $\Omega$	Resistor, 0 $\Omega$ , 0603	Vishay Draloric	CRCW06030000Z0EA	FEC 1469739
R4	20 k $\Omega$	3/8" square (10 mm) single-turn potentiometer	Vishay	M63M203KB40	FEC 9607854
R5	10 k $\Omega$	Resistor, 0603, 1%, 10 k $\Omega$	Vishay Draloric	CRCW060310K0FKEAHP	FEC 1738918
R6	DNI	Do not install	Vishay Draloric	CRCW060310K0FKEAHP	DNI
R7	16.5 k $\Omega$	Resistor, 0603, 1%	Neohm	CPF0603F16K5C1	FEC 1527606RL
R8	0 $\Omega$	Resistor, 0 $\Omega$ , 0603	Vishay Draloric	CRCW06030000Z0EA	FEC 1469739
R9	10 k $\Omega$	Resistor, 0603, 1%, 10 k $\Omega$	Vishay Draloric	CRCW060310K0FKEAHP	FEC 1738918
R10	10 k $\Omega$	Resistor, 0603, 1%, 10 k $\Omega$	Vishay Draloric	CRCW060310K0FKEAHP	FEC 1738918
S1	N/A	SPDT slide switch	Alps	STSS59121	FEC 1123875
SCL1	DNI	Do not install	FEC	FEC 240-333	FEC 240-333
SCL2	DNI	Do not install	FEC	FEC 240-333	FEC 240-333
SDA1	DNI	Do not install	FEC	FEC 240-333	FEC 240-333
SDA2	DNI	Do not install	FEC	FEC 240-333	FEC 240-333
T1	DNI	Do not install	FEC	FEC 240-333	FEC 240-333
T2	DNI	Do not install	FEC	FEC 240-333	FEC 240-333
T3	DNI	Do not install	FEC	FEC 240-333	FEC 240-333
T4	DNI	Do not install	FEC	FEC 240-333	FEC 240-333
U2	N/A	Hot swappable dual I <sup>2</sup> C isolators with integrated dc-to-dc converter	Analog Devices, Inc.	<a href="#">ADM3260</a>	<a href="#">ADM3260ARSZ</a>
VDDISO	DNI	Do not install	FEC	FEC 240-333	FEC 240-333
VDDP	DNI	Do not install	FEC	FEC 240-333	FEC 240-333
VINP	N/A	Test point	FEC	FEC 240-333	FEC 240-333
VISO	N/A	Test point	FEC	FEC 240-333	FEC 240-333

<sup>1</sup> N/A = not applicable and DNI = do not install.<sup>2</sup> FEC = Farnell Electronics Components.

## NOTES

**ESD Caution**

**ESD (electrostatic discharge) sensitive device.** Charged devices and circuit boards can discharge without detection. Although this product features patented or proprietary protection circuitry, damage may occur on devices subjected to high energy ESD. Therefore, proper ESD precautions should be taken to avoid performance degradation or loss of functionality.

**Legal Terms and Conditions**

By using the evaluation board discussed herein (together with any tools, components documentation or support materials, the "Evaluation Board"), you are agreeing to be bound by the terms and conditions set forth below ("Agreement") unless you have purchased the Evaluation Board, in which case the Analog Devices Standard Terms and Conditions of Sale shall govern. Do not use the Evaluation Board until you have read and agreed to the Agreement. Your use of the Evaluation Board shall signify your acceptance of the Agreement. This Agreement is made by and between you ("Customer") and Analog Devices, Inc. ("ADI"), with its principal place of business at One Technology Way, Norwood, MA 02062, USA. Subject to the terms and conditions of the Agreement, ADI hereby grants to Customer a free, limited, personal, temporary, non-exclusive, non-sublicensable, non-transferable license to use the Evaluation Board FOR EVALUATION PURPOSES ONLY. Customer understands and agrees that the Evaluation Board is provided for the sole and exclusive purpose referenced above, and agrees not to use the Evaluation Board for any other purpose. Furthermore, the license granted is expressly made subject to the following additional limitations: Customer shall not (i) rent, lease, display, sell, transfer, assign, sublicense, or distribute the Evaluation Board; and (ii) permit any Third Party to access the Evaluation Board. As used herein, the term "Third Party" includes any entity other than ADI, Customer, their employees, affiliates and in-house consultants. The Evaluation Board is NOT sold to Customer; all rights not expressly granted herein, including ownership of the Evaluation Board, are reserved by ADI. CONFIDENTIALITY. This Agreement and the Evaluation Board shall all be considered the confidential and proprietary information of ADI. Customer may not disclose or transfer any portion of the Evaluation Board to any other party for any reason. Upon discontinuation of use of the Evaluation Board or termination of this Agreement, Customer agrees to promptly return the Evaluation Board to ADI. ADDITIONAL RESTRICTIONS. Customer may not disassemble, decompile or reverse engineer chips on the Evaluation Board. Customer shall inform ADI of any occurred damages or any modifications or alterations it makes to the Evaluation Board, including but not limited to soldering or any other activity that affects the material content of the Evaluation Board. Modifications to the Evaluation Board must comply with applicable law, including but not limited to the RoHS Directive. TERMINATION. ADI may terminate this Agreement at any time upon giving written notice to Customer. Customer agrees to return to ADI the Evaluation Board at that time. LIMITATION OF LIABILITY. THE EVALUATION BOARD PROVIDED HEREUNDER IS PROVIDED "AS IS" AND ADI MAKES NO WARRANTIES OR REPRESENTATIONS OF ANY KIND WITH RESPECT TO IT. ADI SPECIFICALLY DISCLAIMS ANY REPRESENTATIONS, ENDORSEMENTS, GUARANTEES, OR WARRANTIES, EXPRESS OR IMPLIED, RELATED TO THE EVALUATION BOARD INCLUDING, BUT NOT LIMITED TO, THE IMPLIED WARRANTY OF MERCHANTABILITY, TITLE, FITNESS FOR A PARTICULAR PURPOSE OR NON-INFRINGEMENT OF INTELLECTUAL PROPERTY RIGHTS. IN NO EVENT WILL ADI AND ITS LICENSORS BE LIABLE FOR ANY INCIDENTAL, SPECIAL, INDIRECT, OR CONSEQUENTIAL DAMAGES RESULTING FROM CUSTOMER'S POSSESSION OR USE OF THE EVALUATION BOARD, INCLUDING BUT NOT LIMITED TO LOST PROFITS, DELAY COSTS, LABOR COSTS OR LOSS OF GOODWILL. ADI'S TOTAL LIABILITY FROM ANY AND ALL CAUSES SHALL BE LIMITED TO THE AMOUNT OF ONE HUNDRED US DOLLARS (\$100.00). EXPORT. Customer agrees that it will not directly or indirectly export the Evaluation Board to another country, and that it will comply with all applicable United States federal laws and regulations relating to exports. GOVERNING LAW. This Agreement shall be governed by and construed in accordance with the substantive laws of the Commonwealth of Massachusetts (excluding conflict of law rules). Any legal action regarding this Agreement will be heard in the state or federal courts having jurisdiction in Suffolk County, Massachusetts, and Customer hereby submits to the personal jurisdiction and venue of such courts. The United Nations Convention on Contracts for the International Sale of Goods shall not apply to this Agreement and is expressly disclaimed.