

## SPLIT-TYPE FORK TURRETS

FORK

### SPECIFICATIONS

Terminal: Brass, Tin Plate  
Bushing: White PTFE

FORK-TO-TURRET

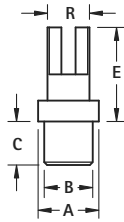


FIG. 1

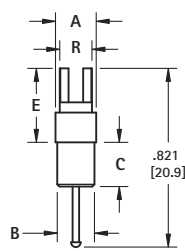


FIG. 2

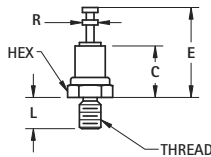
CAT. NO.	FIG. NO.	A	B	C	E	R	Mtg. Hole Dia.
11100	1	.172 (4.4)	.148 (3.8)	.125 (3.2)	.250 (6.4)	.125 (3.2)	.136 (3.5)
11111	1	.187 (4.8)	.171 (4.3)	.150 (3.8)	.390 (9.9)	.148 (3.8)	.158 (4.0)
11112	1	.187 (4.8)	.171 (4.3)	.150 (3.8)	.453 (11.5)		
11113	1	.187 (4.8)	.171 (4.3)	.150 (3.8)	.328 (8.3)		
11114	1	.187 (4.8)	.171 (4.3)	.150 (3.8)	.390 (9.9)		
11115	1	.187 (4.8)	.171 (4.3)	.150 (3.8)	.453 (11.5)		
11116	2	.187 (4.8)	.171 (4.3)	.212 (5.4)	.390 (9.9)		

## THREADED TURRET TERMINALS



### SPECIFICATIONS

Terminal: Brass, Tin Plate  
Bushing: White PTFE



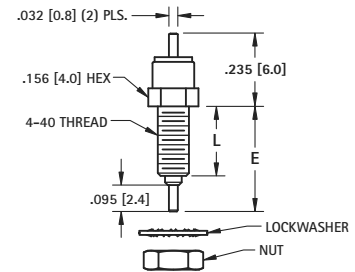
CAT. NO.	Thread	Hex	C	E	L	R
11350	2-56	.156 (3.9)	.206 (5.2)	.360 (9.1)	.125 (3.2)	.062 (1.6)
11351	4-40	.250 (6.4)	.270 (6.9)	.510 (12.9)	.250 (6.4)	.094 (2.4)
11352	6-32	.250 (6.4)	.270 (6.9)	.510 (12.9)	.375 (9.5)	.094 (2.4)

## THREADED FEED - THRU TERMINALS



### SPECIFICATIONS

Terminal: Brass, Tin Plate  
Bushing: White PTFE  
Body: Brass, Nickel Plate



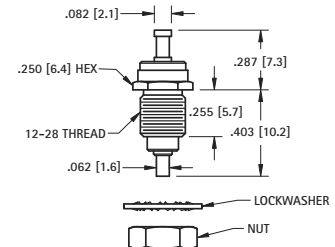
CAT. NO.	E	L
11360	.328 (8.3)	.200 (5.1)
11361	.378 (9.6)	.250 (6.4)

Nut and washer supplied unassembled



### SPECIFICATIONS

Terminal: Brass, Tin Plate  
Bushing: White PTFE  
Body: Brass, Nickel Plate



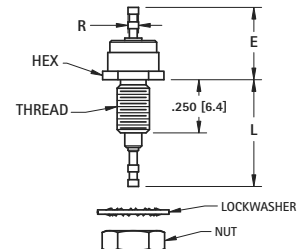
CAT. NO. 11362

Nut and washer supplied unassembled



### SPECIFICATIONS

Terminal: Brass, Tin Plate  
Bushing: White PTFE  
Body: Brass, Nickel Plate



Nut and washer supplied unassembled

CAT. NO.	Thread	Hex	E	L	R
11363	10-32	.312 (7.9)	.425 (10.8)	.565 (14.3)	.062 (1.6)
11364	6-32	.188 (4.8)	.368 (9.3)	.510 (12.9)	.040 (1.0)

## MOLDED DIALLYL PHTHALATE INSULATED THREADED TERMINALS

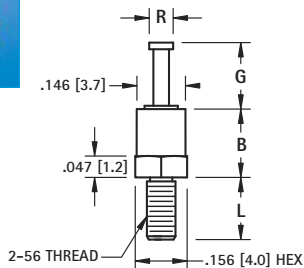
### MATERIAL:

Terminal: Brass, Tin Plate  
Insulator: Blue Molded Diallyl Phthalate, SDGF  
Base: Brass, Tin Plate

### Properties:

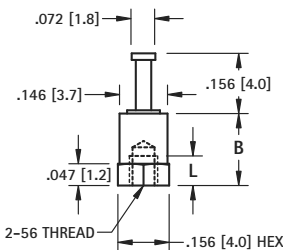
- High Dielectric Breakdown
- Continuous Use Temperature up to 350°F (176 °C)
- UL 94 V-O Rated
- Other platings and insulator colors available upon request

SINGLE TURRET TO MALE THREAD



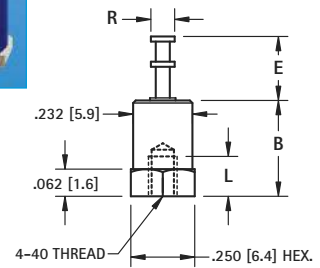
CAT. NO.	B	E	L	R
11500	.235 (6.0)	.156 (4.0)	.125 (3.2)	.072 (1.8)
11501	.235 (6.0)	.218 (5.5)	.125 (3.2)	.072 (1.8)
11502	.235 (6.0)	.218 (5.5)	.187 (4.8)	.072 (1.8)

SINGLE TURRET TO FEMALE THREAD



CAT. NO.	L	B
11510	.078 (2.0)	.235 (5.9)
11511	.117 (3.0)	.391 (9.9)

DOUBLE TURRET TO FEMALE THREAD



CAT. NO.	B	E	L	R
11512	.375 (9.5)	.219 (5.6)	.156 (4.0)	.093 (2.4)
11513	.594 (15.1)	.344 (8.7)	.219 (5.6)	.140 (3.6)