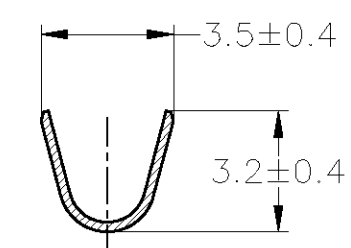
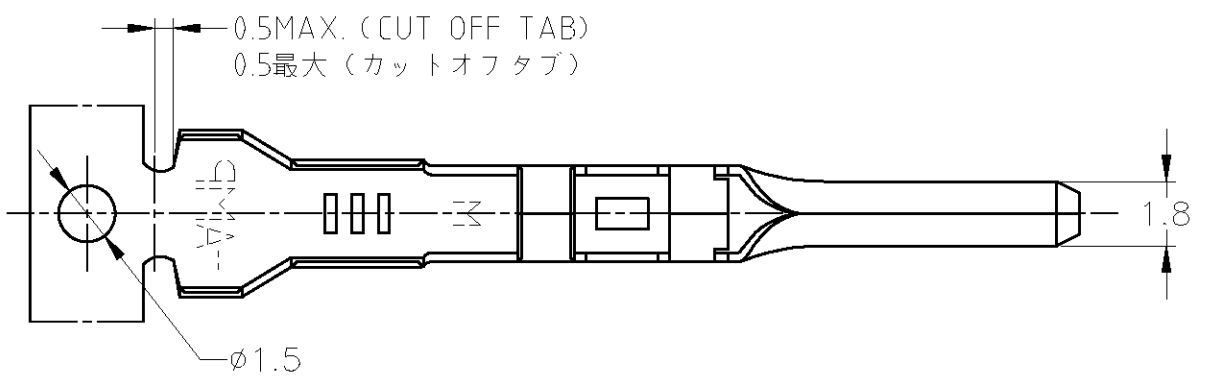
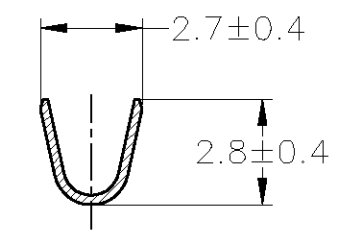
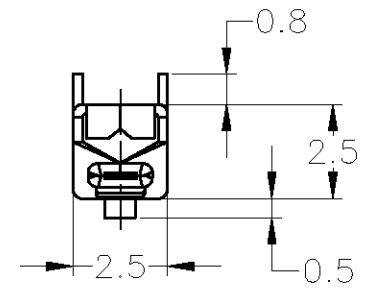
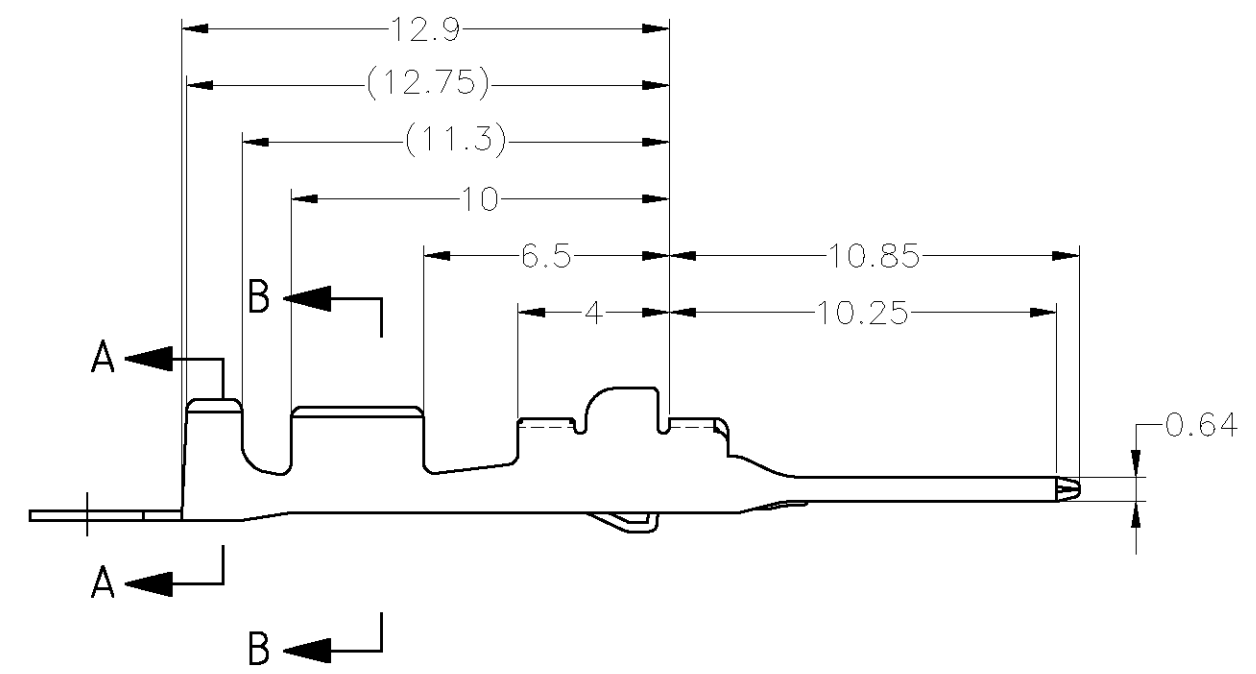


THIS DRAWING IS UNPUBLISHED. RELEASED FOR PUBLICATION
 © COPYRIGHT - By Tyco Electronics JAPAN G.K. ALL RIGHTS RESERVED.

| LOC | DIST | REVISIONS | | | |
|-----|------|-------------|------------------|---------------|-----------------|
| P | LTR | DESCRIPTION | DATE | DWN | APVD |
| J | - | E2 | REDRAWN W/CHANGE | ECR-12-012125 | 05JUL2012 TS KB |



A-A




B-B

- 1. APPLICATION SPEC NO. 114-5160
- 2. APPLICABLE PRODUCT SPEC NO. 108-5374

- 1. 取付適用規格番号 114-5160
- 2. 適用製品規格番号 108-5374

| | | |
|------------------------|---------|-------------|
| 179429-1 | PRE-TIN | 175273-1 |
| LOOSE PIECE CONTACT PN | FINISH | PART NUMBER |

| | | | | |
|---|--|---------------------------------|---|------------------------|
| THIS DRAWING IS A CONTROLLED DOCUMENT. | | DWN T.SHINOHARA 05JUL2012 |  TE Connectivity | |
| DIMENSIONS: mm | | CHK K.BETSUI 05JUL2012 | | |
| TOLERANCES UNLESS OTHERWISE SPECIFIED: | | APVD K.BETSUI 05JUL2012 | NAME 070II SERIES M TAB CONTACT | |
| 0 PLC ± - 1 PLC ± - 2 PLC ± - 3 PLC ± - 4 PLC ± - ANGLES ± - | | PRODUCT SPEC - | RESTRICTED TO - | |
| MATERIAL BRASS | | FINISH SEE TABLE | APPLICATION SPEC SEE NOTE | SIZE A3 |
| TOLERANCES UNLESS OTHERWISE SPECIFIED: 一般公差 | | WEIGHT 0.25 g | CAGE CODE 00779 | DRAWING NO C-175273 |
| 10 ≥ : ±0.2 30 ≥ > 10 : ±0.25 100 ≥ > 30 : ±0.3 ANGLE : ±3° | | CUSTOMER DRAWING | | SCALE 5:1 |
| | | SHEET 1 OF 1 | | REV E2 |