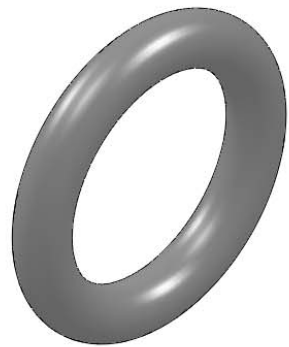
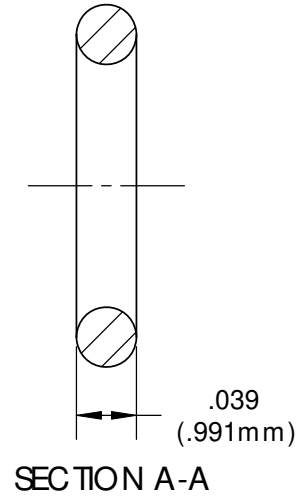
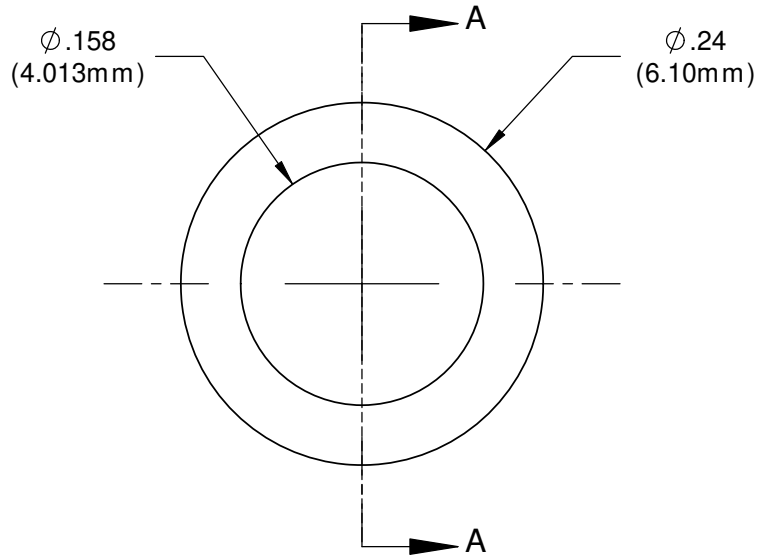


NOTE:
 1) OPERATING TEMPERATURE: -65°F to +300°F
 2) U.S. & Foreign Pat. Issued & Pend.

REVISIONS				
ECN #	REV	DESCRIPTION	DATE	INITIALS
	N/A	INITIAL RELEASE	10/29/01	JS
	001	REVISED PER ECR1110AZ01	2/12/10	KH



ISOMETRIC VIEW

<small>UNLESS OTHERWISE SPECIFIED DIMENSIONS ARE IN INCHES: ANGLES DECIMALS ± 1' .X ±.020 .XX ±.010 FINISH .XXX ±.005</small> <small>BREAK ALL CORNERS AND SHARP EDGES .250 MAX</small>	MATERIAL ETHYLENE PROPYLENE DIENE RUBBER (EPDM) 70 DUROMETER (BLACK)		VISUAL COMMUNICATIONS COMPANY 190 Bosstick Boulevard, Suite 101 San Marcos, CA 92069 USA Phone (760) 560-1300 Fax (760) 560-1301 email vccsales@vcclite.com	
	FINISH SEE NOTES		TITLE: LENS SPACER SPC 040	
<small>THIRD ANGLE PROJECTION</small> 	APPROVALS	DATE	SIZE A	DWG. NO. SPC 040
<small>PROPRIETARY AND CONFIDENTIAL</small> <small>THE INFORMATION CONTAINED IN THIS DRAWING IS THE SOLE PROPERTY OF VISUAL COMMUNICATIONS COMPANY, INC. ANY REPRODUCTION IN PART OR AS A WHOLE WITHOUT THE WRITTEN PERMISSION OF VISUAL COMMUNICATIONS COMPANY, INC. IS PROHIBITED.</small>	DRAWN K.Howard CHECKED DPZ	2/12/10 2/22/10	REV 001	SCALE: 8:1
DO NOT SCALE DRAWING			SHEET 1 OF 1	