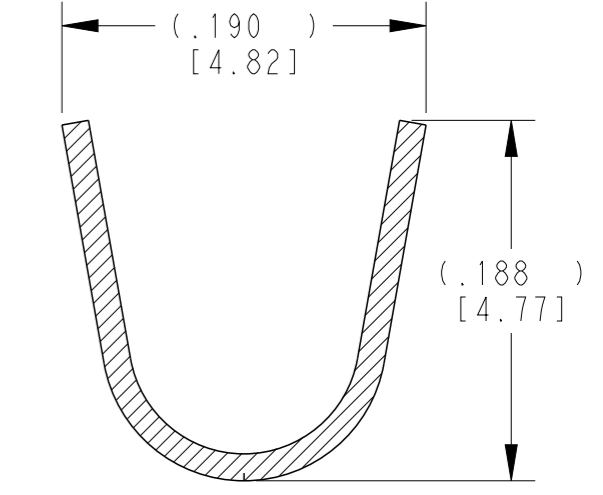
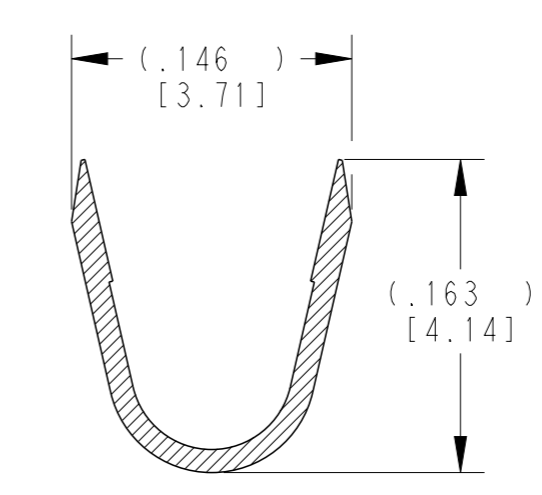
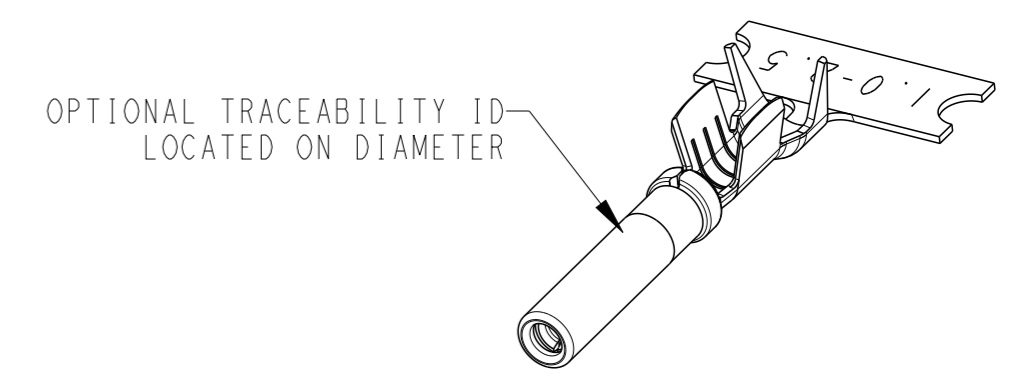
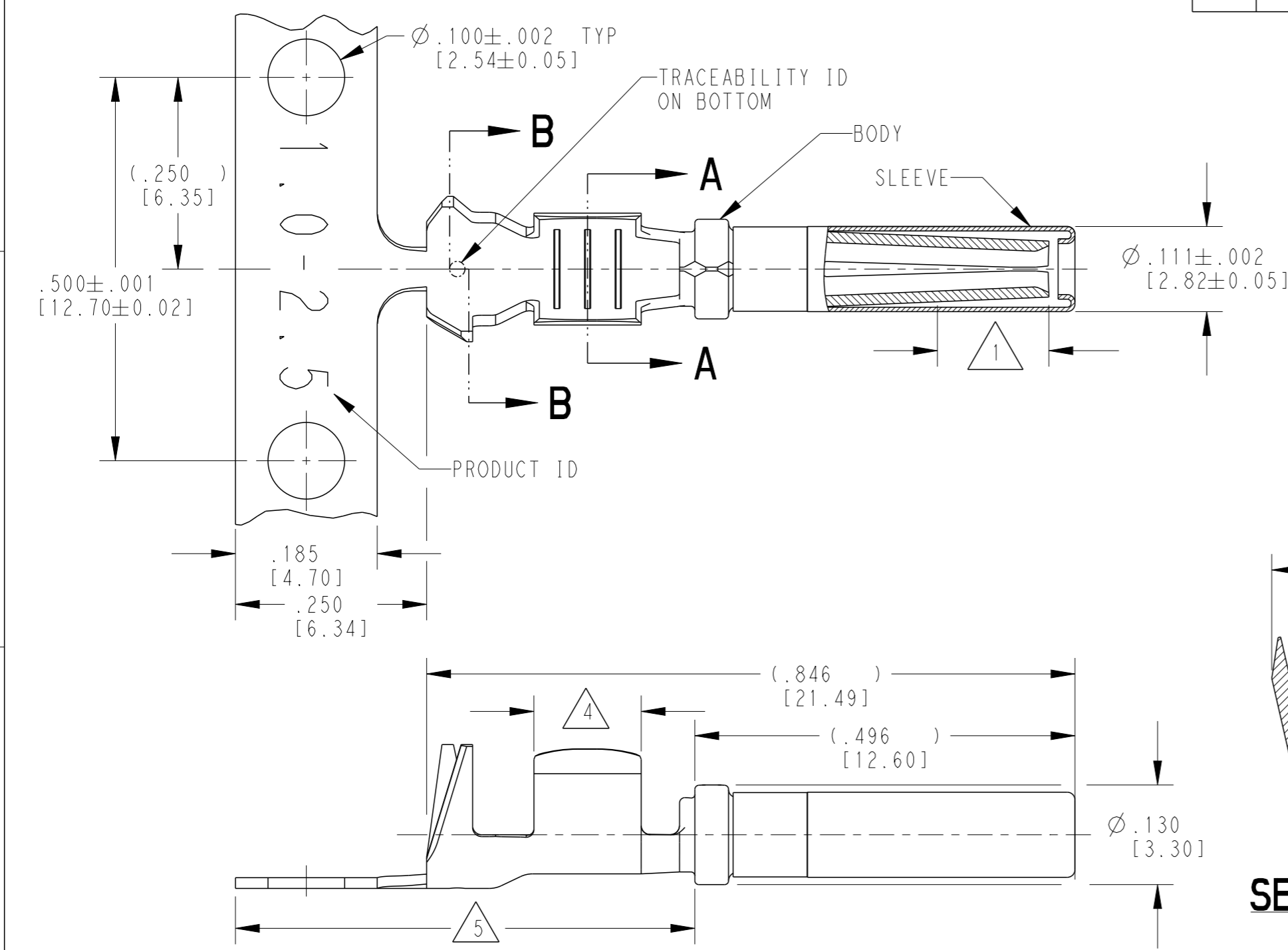


THIS DRAWING IS UNPUBLISHED
 RELEASED FOR PUBLICATION 2020
 © COPYRIGHT 2020 BY TE CONNECTIVITY ALL RIGHTS RESERVED.

LOC	DIST	REVISIONS			
P	LTR	DESCRIPTION	DATE	DWN	APVD
	C	REVISED PER ECO-15-007761	28MAY2015	RL	DM
	D	REVISED PER PCN E-20-008101	12JUN2020	DM	DM
	D1	REVISED PER PCN-22-157823	12OCT2022	SP	DM



- 5 TIN MAY BE IN THIS REGION.
- 4 TIN PLATED REGION.
- 3 MATERIAL:
BODY: .014 [0.36] THICK COPPER ALLOY
SLEEVE: STAINLESS STEEL
- 2. WIRE RANGE: 16 AWG TO 12 AWG [1.0-2.5 mm²]
INSULATION RANGE: Ø.075-.140 [Ø1.91-3.56]
- 1 GOLD PLATED REGION.

NOTES: UNLESS OTHERWISE SPECIFIED

TE INTERNAL PN	DEUTSCH PN	PLATING
1062-16-1222	1062-16-1222	Ni/Cu overall, Sn/Ni/Cu Wire Barrel
1062-16-1244	1062-16-1244	Selective Au, Ni/Cu overall, Sn/Ni/Cu Wire Barrel
1062-16-1277	1062-16-1277	Sn/Ni/Cu overall

THIS DRAWING IS A CONTROLLED DOCUMENT.		DWN 28 JUN 2000 VLADIMIR TOMSA	TE Connectivity			
DIMENSIONS: mm [INCHES]		CHK 14 MAR 2002 BRICE BYFORD				
TOLERANCES UNLESS OTHERWISE SPECIFIED:		APVD 14 MAR 2000 ROBIN REED	NAME SOCKET, STAMPED AND FORMED SIZE 16 12-16AWG			
0 PLC ± 1 PLC ± 2 PLC ± 3 PLC ±.025 [0.64] 4 PLC ± ANGLES ±		PRODUCT SPEC 108-151000	SIZE A3	CAGE CODE 4AFU8	DRAWING NO C=1062-16-12XX	RESTRICTED TO -
MATERIAL 3		FINISH SEE TABLE	WEIGHT 0.50 g	SCALE 6:1	SHEET 1 OF 1	REV D1
Customer Drawing						