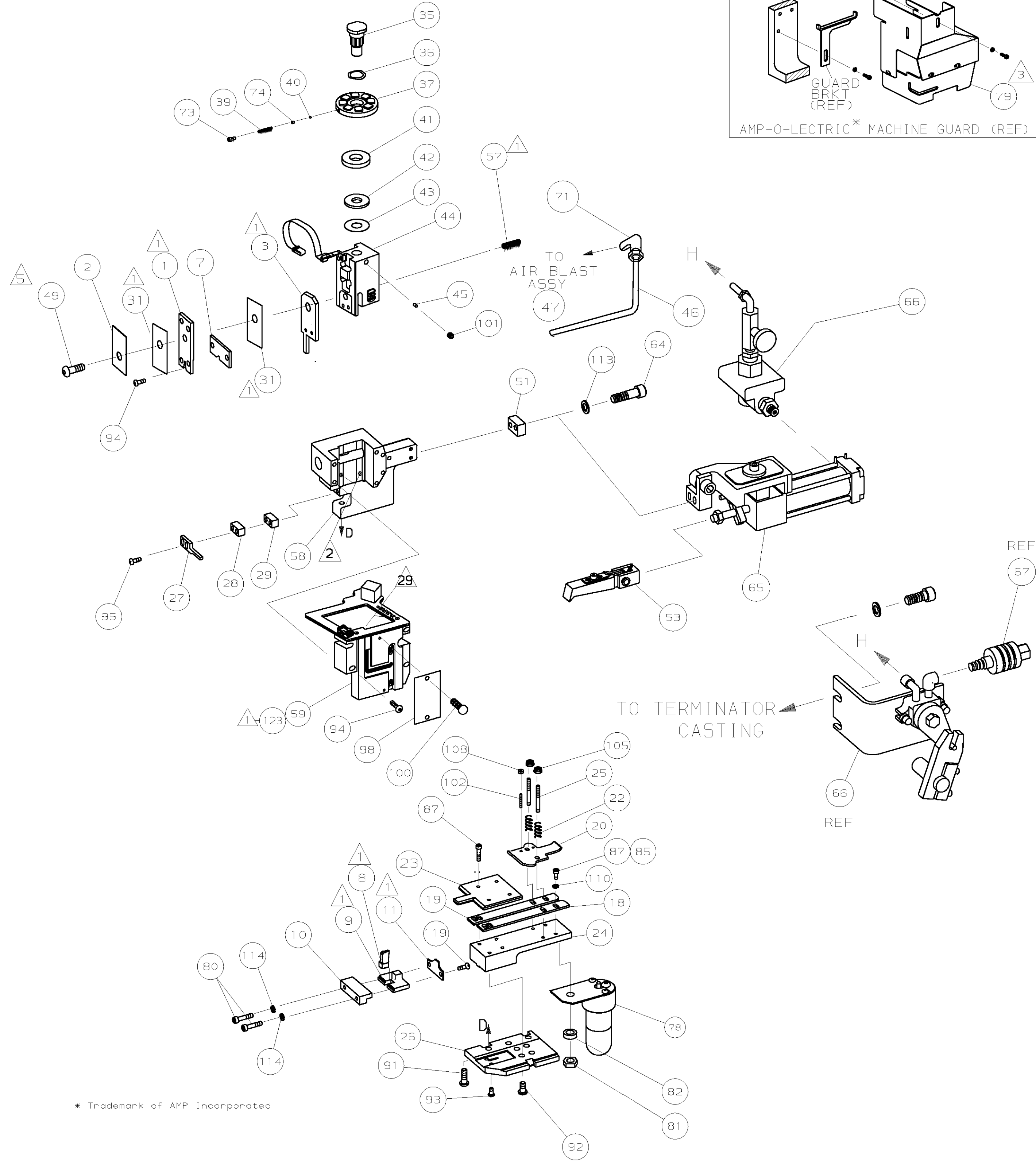
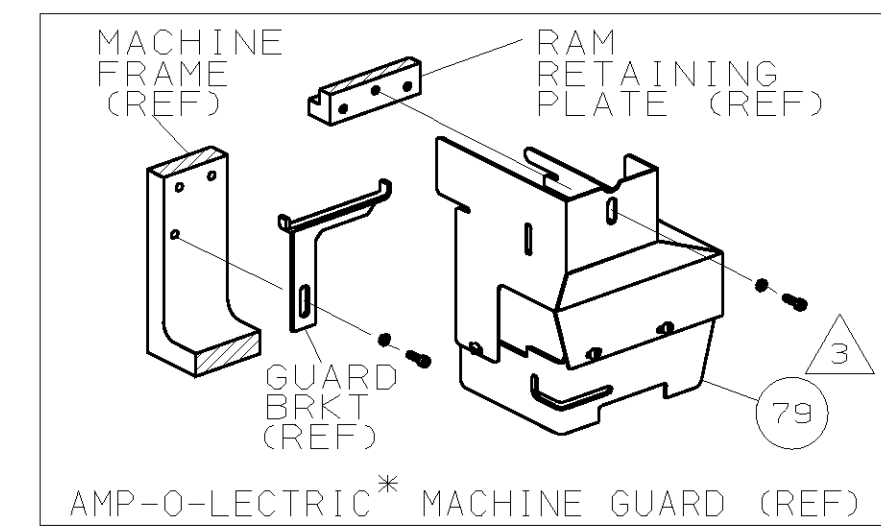


PART NUMBER	REV	FIRST USED
567705-1	C	852070-1



- 1 RECOMMENDED SPARE PARTS.
- 2 GREASE LIGHTLY.
- 3 GUARD MUST BE IN PLACE WHEN OPERATING APPLICATOR IN AMP-O-LECTRIC MACHINE.
- 4 SEE DRAWING FOR COMPONENTS
- 5 TORQUE ITEM 49 TO 60 INCH POUNDS

TERMINAL NAME:
5PLICE (AMPLIVAR) 9 SERRATIONS
62308-2

CRIMPING DATA			
PAD LTR	CRIMP HEIGHT	WIRE SIZE CMA	REC. SETUP WIRE
A	.089 ±.002	6200-7000	(1) 16 MAGNET (1) 14 AWG
B	.084 ±.002	5200-6000	(2) 16 AWG
C	.079 ±.002	4000-5000	(1) 17 MAGNET (1) 16 AWG
D	.074 ±.002	3000-3800	(2) 18 MAGNET
CRIMP	SIZE	TYPE	RANGE
WIRE	.140	F	3000-7000 CMA
INSUL	-	-	-
FEED	.345	APPL INST	SET UP GAGE LAYOUT
		A1 8039 & 9640	- L14930
WIRE STRIP LENGTH -			
-1	AMP-O-LECTRIC		AIRFEED

STANDARD FORCE CRIMP QUALITY MONITOR APPLICATOR
S1M HDM 567016-1

REF	QTY	REV	DESCRIPTION	ITEM NO
				70
				69
				68
				67
				66
				65
				64
				63
				62
				61
				60
				59
				58
				57
				56
				55
				54
				53
				52
				51
				50
				49
				48
				47
				46
				45
				44
				43
				42
				41
				40
				39
				38
				37
				36
				35
				34
				33
				32
				31
				30
				29
				28
				27
				26
				25
				24
				23
				22
				21
				20
				19
				18
				17
				16
				15
				14
				13
				12
				11
				10
				9
				8
				7
				6
				5
				4
				3
				2
				1

QTY	REV	DESCRIPTION	ITEM NO
			125
			124
			123
			122
			121
			120
			119
			118
			117
			116
			115
			114
			113
			112
			111
			110
			109
			108
			107
			106
			105
			104
			103
			102
			101
			100
			99
			98
			97
			96
			95
			94
			93
			92
			91
			90
			89
			88
			87
			86
			85
			84
			83
			82
			81
			80
			79
			78
			77
			76
			75
			74
			73
			72
			71

QTY	REV	DESCRIPTION	ITEM NO
-1	U/M	DWG SIZE	
		REVISION OF EACH ASSY NO (WHEN BLANK, USE DWG REVISION)	

QTY	REV	DESCRIPTION	ITEM NO
-1	U/M	DWG SIZE	
		REVISION OF EACH ASSY NO (WHEN BLANK, USE DWG REVISION)	

LOC A
DIST 66

DIMENSIONS IN INCHES. DO NOT SCALE PRINT. TOLERANCES UNLESS OTHERWISE SPECIFIED:
 2 PLC DEC ±.25
 3 PLC DEC ±.
 4 PLC DEC ±.
 ANGLES ± -
 SURF TEXTURE: ✓
 REMOVE BURRS, BREAK SHARP EDGES R.015 MAX

MATL - HT TR - FIN -

DR 5-25-95 APP 5-25-95
 B. HIGMAN S. FERRANTI
 CHK 5-25-95 REL 6/13/95
 C. ERISMAN B. MORGAN

AMP AMP Incorporated Harrisburg, PA 17105-3608

NAME: END FEED CQM APPLICATOR MACHINE REF: MINI APPL

SCALE: - DWG NO: 567705 SHEET: 1 OF 1 REV: C

CASE CODE: 00779 CUSTOMER AND ASSEMBLY DRAWING

THIS DRAWING IS A CONTROLLED DOCUMENT.

THIS DRAWING IS UNCLASSIFIED DATE 05-18-2010 BY AMP INCORPORATED. ALL RIGHTS RESERVED.