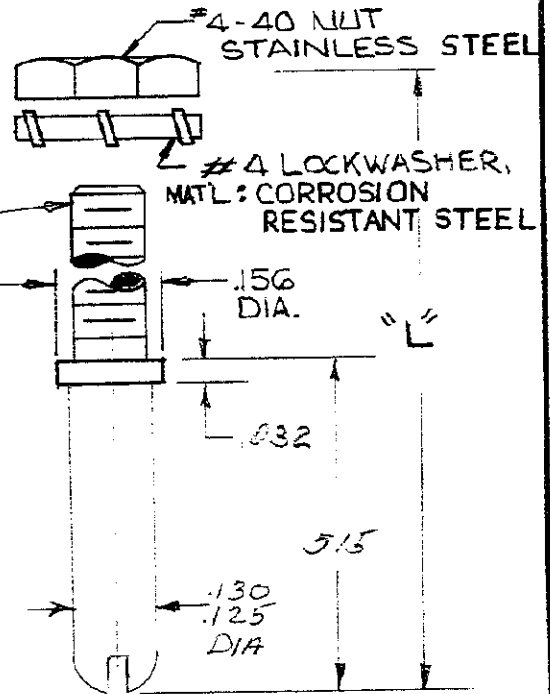


© 1967 BY AMP INCORPORATED. ALL RIGHTS RESERVED. AMP PRODUCTS COVERED BY PATENTS AND/OR PATENTS PENDING.

REVISIONS			
SYM	DESCRIPTION	DATE	APPD
F	REV PER ECN H-017	5-27-80	ELF JRE
G	ADDED -4 PER ECN J-128	3/15/82	TKH JRE
H	OBSOLETE -3 PER ECN DF-0364	11/5/10/10/00	JRM

- 203881-1 1. AS SHOWN, "L" = 1.110/1.095,
2. KEYING PIN - BRASS, ZINC PL.
- 203881-2 1. SAME AS -1 EXCEPT
2. KEYING PIN - SST
"L" = 1.110/1.095.
- OBSOLETE** 1. SAME AS -1 EXCEPT:
2. "L" = 1.110/1.095.
- 203881-4 1. SAME AS -2 EXCEPT:
2. CUSTOMER PART NO. TO BE MARKED ON INNERMOST PACKAGE.
4-40 UNC-2A
MAT'L - SEE DASH NO



COMPONENTS ARE PACKAGED UNASSEMBLED

AMP INFO

LOC PRINT

DFH CO

UNLESS OTHERWISE SPECIFIED
DIMENSIONS ARE IN INCHES

TOLERANCES ON

FRACTIONS	DECIMALS	ANGLES
= $\pm .005$	= $\pm .005$	= $\pm .005$

MATERIAL
SEE CALL OUT

HEAT TREAT
 \sim

FINISH
 \sim

SIGNATURE	DATE
DR <i>C. Hoover</i>	8-24-67
CHK <i>R. Mills</i>	2-9-68
DSGN ENGR	
APPD <i>M. Hoag</i>	2/9/68
OTHER APPD	
<i>R. Holliday</i>	2/9/68

AMP

AMP INCORPORATED
HARRISBURG, PENNSYLVANIA

PIN-KEYING ASS'Y.
HDR SERIES

CODE IDENT NO	SIZE	NUMBER
00779	A	203881
SCALE 4:1	WT	CALC
		ACTUAL
		SHEET 1 OF 1