

PRODUCT NO.	⑥ CONNECTOR	DIM J	DIM K
10085305-0010ELF	10085305-0010ALF	56.4	62.4
10085305-0101ELF	10085305-0101PALF	56.4	62.4
10085305-0901ELF	10085305-0901ALF	56.4	62.4
10085305-0110ELF	10085305-0110PALF	56.4	62.4
10085305-0110PELF	10085305-0110PALF	44.4	50.4
10085305-2010ELF	10085305-2010ALF	56.4	62.4
10085305-2110ELF	10085305-2110PALF	56.4	62.4
10085305-2110PELF	10085305-2110PALF	44.4	50.4
10085305-2101ELF	10085305-2101PALF	56.4	62.4
10085305-4100ELF	10085305-4100PALF	56.4	62.4
10085305-4100PELF	10085305-4100PALF	44.4	50.4

NOTE

1. THIS ARTICLE CARRIES OUT THE EMBOSS TAPE PACKAGE OF THE SLIM LINE SATA CONNECTOR.
2. THE SHAPE AND DIMENSION OF THIS ARTICLE ARE BASED ON JIS C 0806.
(TAPING OF ELECTRIC PARTS < SURFACE MOUNTED DEVICE)
3. PACKAGING SPEC. : REFER TO GS-14-1268
4. PRODUCT SPEC. : REFER TO GS-12-543

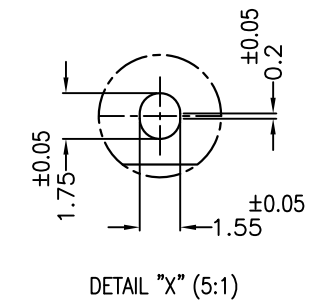
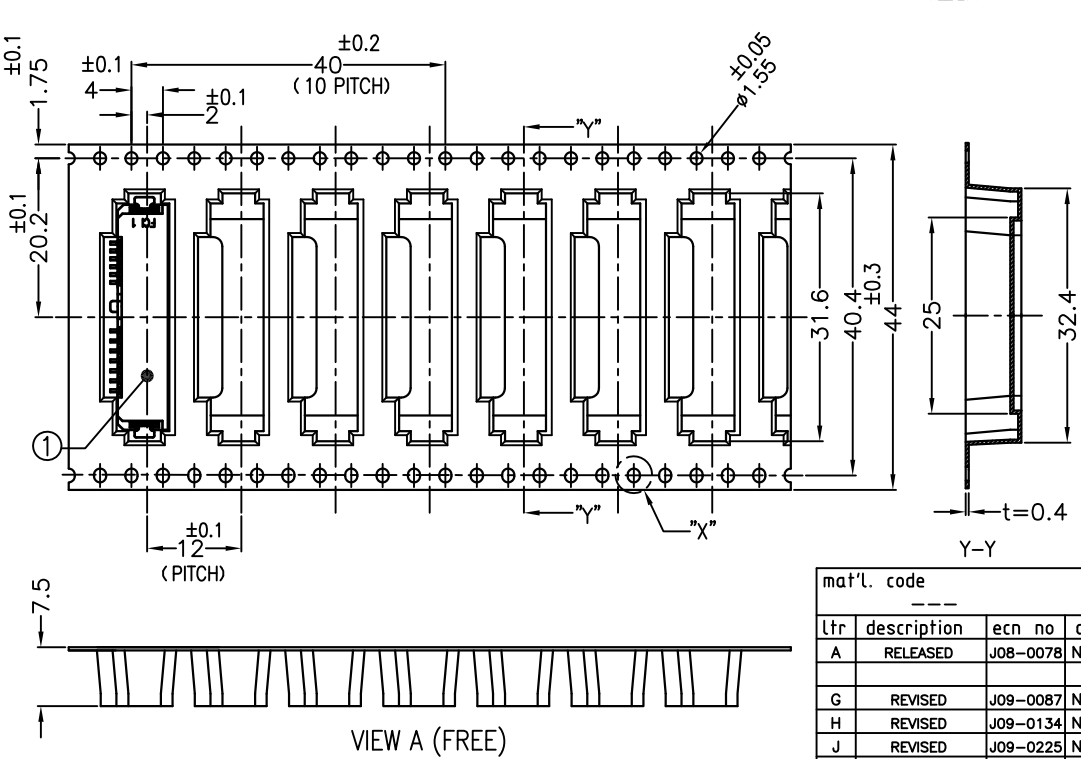
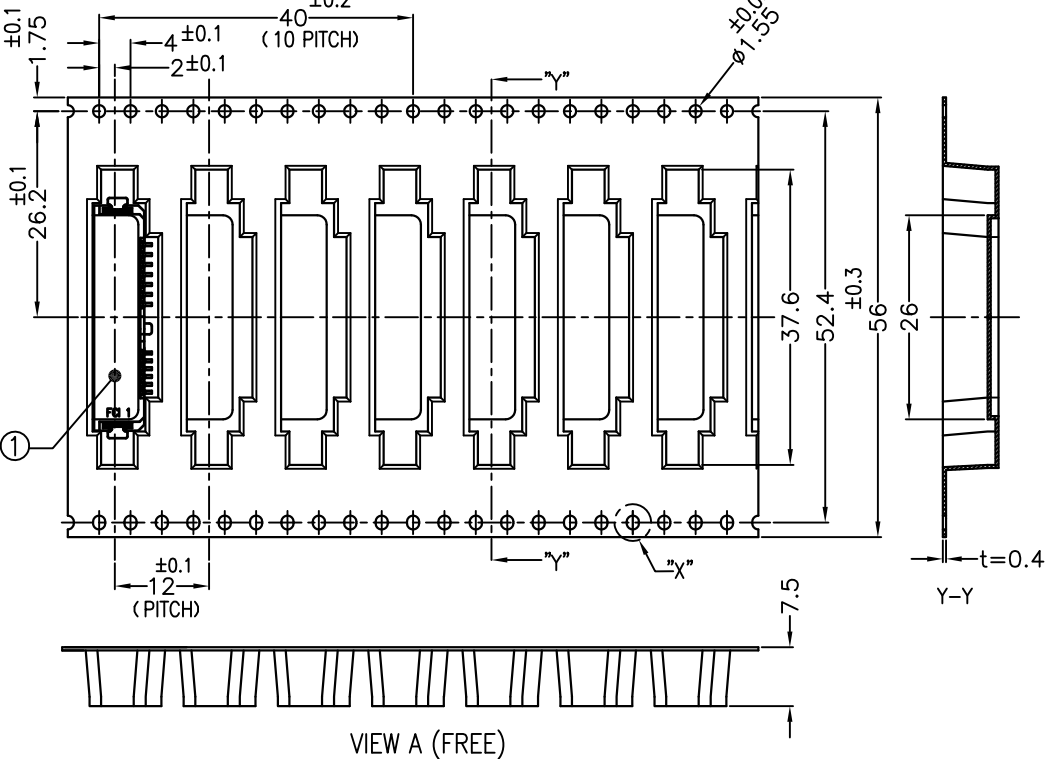
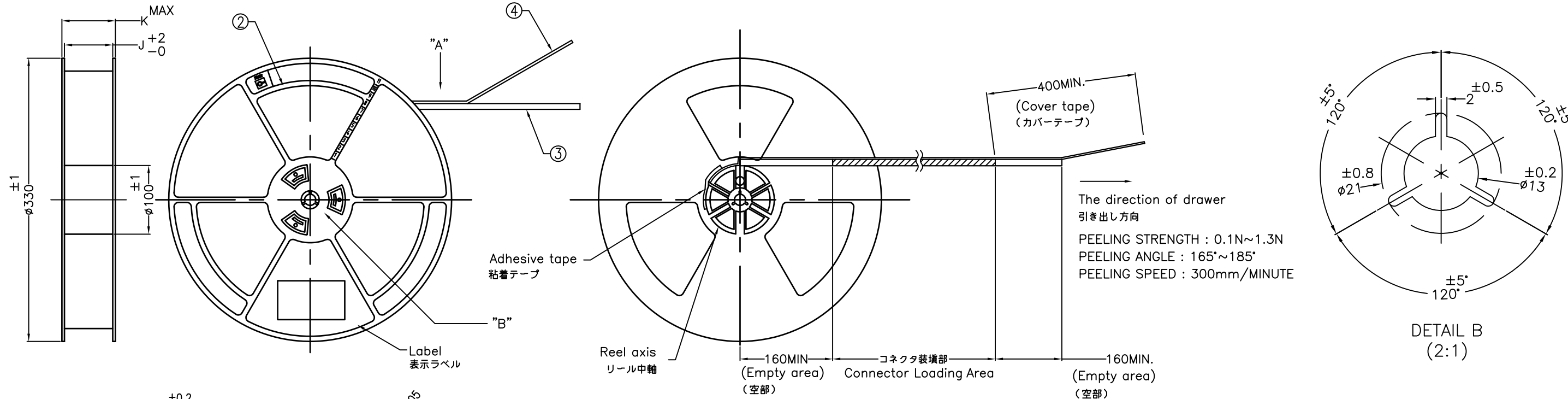
注記

1. 本品はスリムラインシリアルエーティーエーコネクタをエンボステープ梱包したものである。
2. 本品の形状及び寸法規定は JIS C 0806 (電子部品のテーピング (表面実装部品)) に準拠する。
3. 梱包規格はGS-14-1268を参照のこと
4. 製品規格はGS-12-543を参照のこと

EMBOSS PACKAGE

PARTS TABLE 部品表

No.	PART NAME 部品名	MATERIAL 材質	QTY.	NOTE 備考
①	CONNECTOR コネクタ	SEE SHEET 2	600	
②	THE REEL FOR PACKAGING 梱包用リール	POLYSTYRENE ポリスチレン	1	Color : BLACK or BLUE ELECTRIFICATION PREVENTION PROCESSING 色 : 黒または青、帯電防止処理品
③	EMBOSS TAPE エンボステープ	PET	1	ELECTRIFICATION PREVENTION PROCESSING 帯電防止処理品
④	COVER TAPE カバーテープ	POLYESTER ポリエステル	1	



mat'l. code		surface		tolerance		projection		product family		CODE	
---		ISO 1302		ISO 406		mm		530F SATA PLUG SLIM LINE		JP	
A		RELEASED		J08-0078		N.S		2008-2-28		SLIM LINE SATA 7+6P PLUG STANDARD, R/A SMT	
G		REVISED		J09-0087		N.S		2009-3-6		scale 1:3	
H		REVISED		J09-0134		N.S		2009-4-13		N.SASAME 2012-04-19	
J		REVISED		J09-0225		N.S		2009-6-10		N.SASAME 2012-04-19	
K		REVISED		J09-0425		N.S		2010-1-27		AP.LIM 2012-04-19	
L		REVISED		EX-J-011347		N.S		2012-04-19		M.KAJIURA 2012-04-19	
sheet index		revision		L		L		L		L	
1		2		3		4				Rev. L	

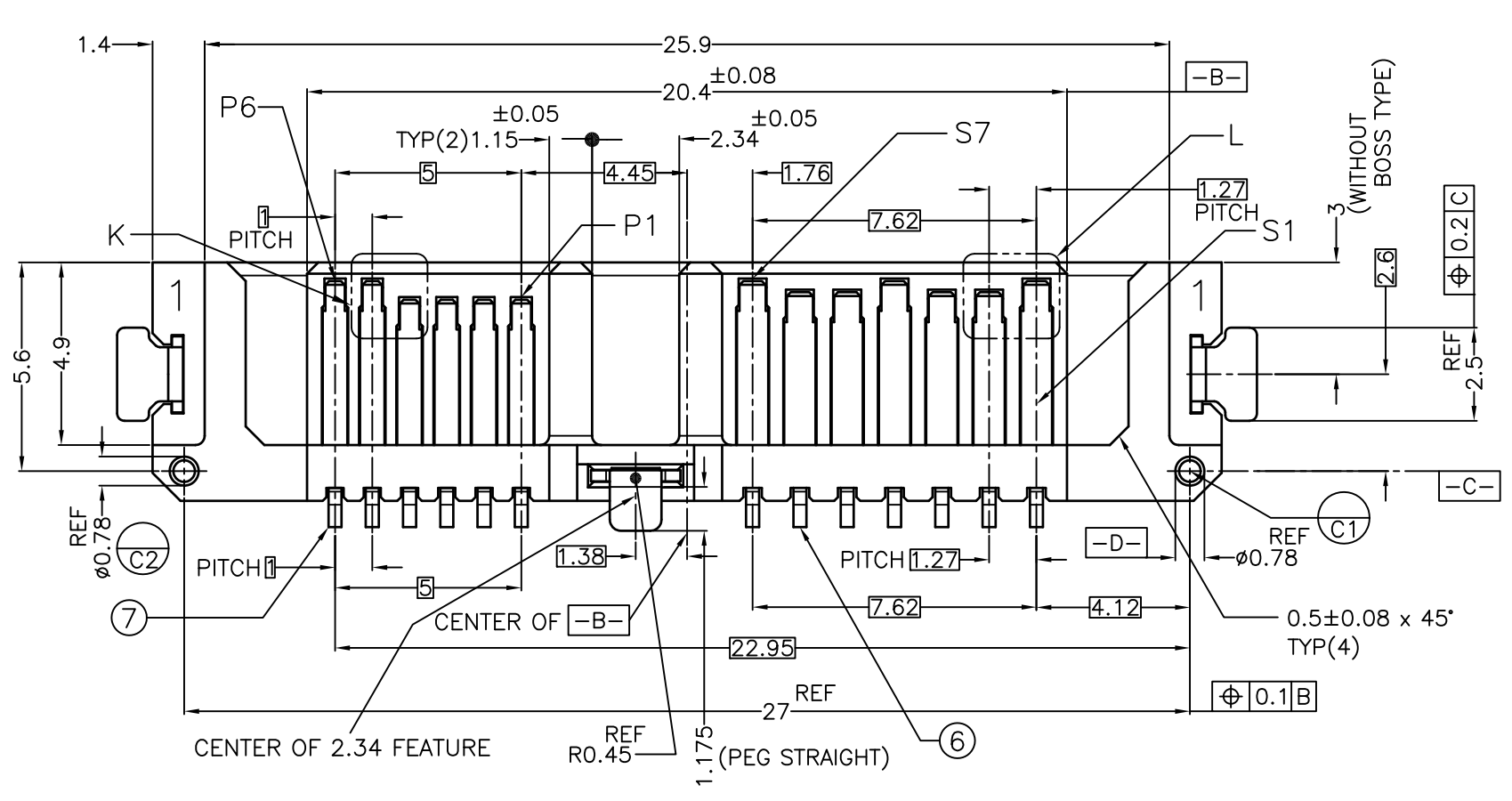
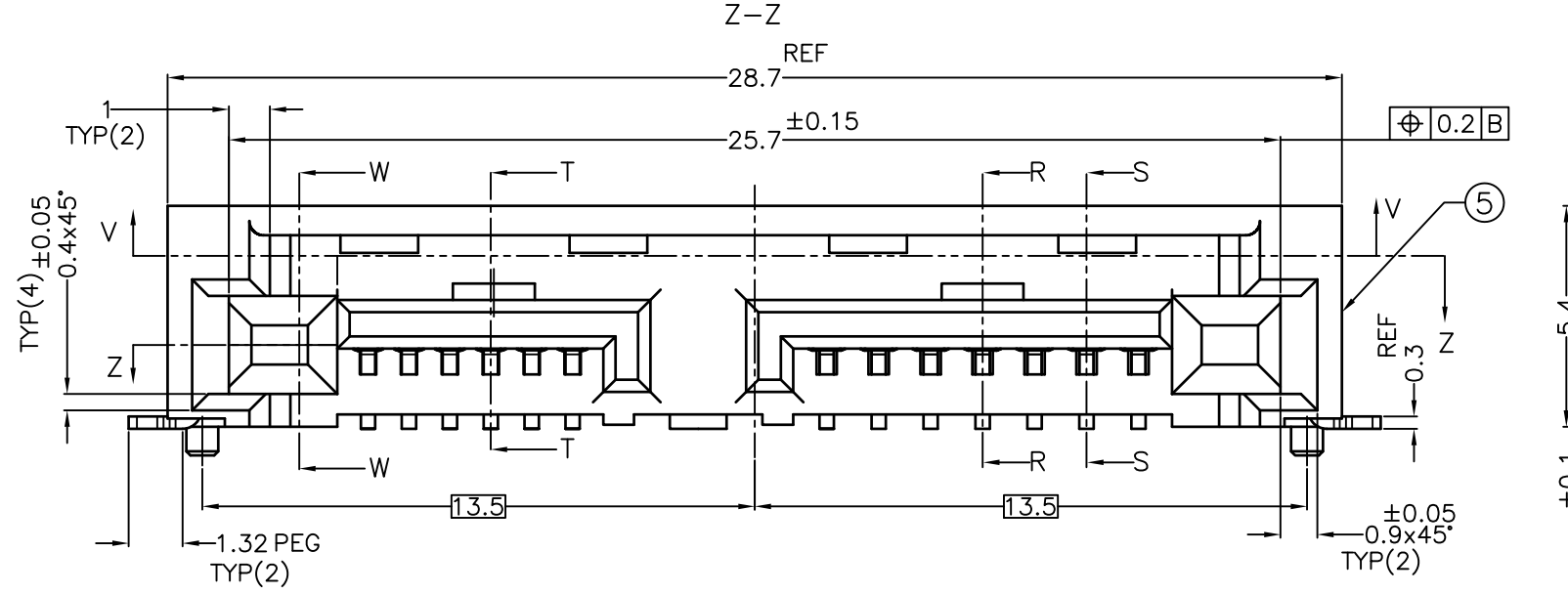
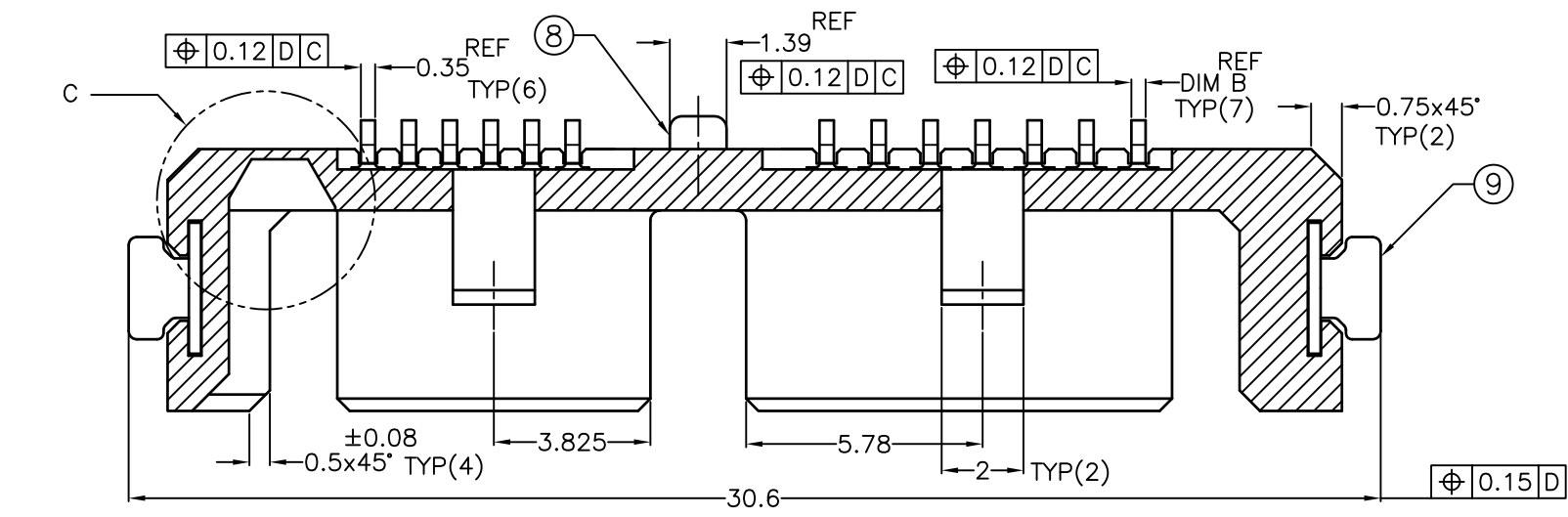


Copyright FCI

CONNECTOR ASSY

PARTS TABLE 部品表

No.	Part name 部品名	QTY.	Note 備考
⑤	HOUSING ハウジング	1	HIGH TEMP THERMOPLASTIC COLOR : BLACK , UL94V-0
⑥	SIGNAL CONTACT シグナルコンタクト	7	COPPER ALLOY CONTACT AREA : Au SOLDERING AREA : Au or TIN
⑦	POWER CONTACT パワーコンタクト	6	COPPER ALLOY CONTACT AREA : Au SOLDERING AREA : Au or TIN
⑧	SOLDER PEG (CENTER) 補強金具 (中央部)	1	COPPER ALLOY TIN PLATING
⑨	SOLDER PEG (L&R) 補強金具 (左、右)	2	COPPER ALLOY TIN PLATING



<P/N composition> <P/N 構成>

10085305 - X X X X X LF

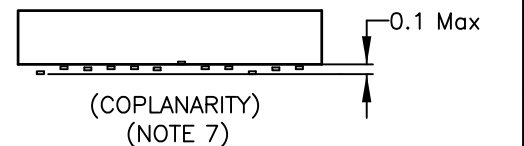
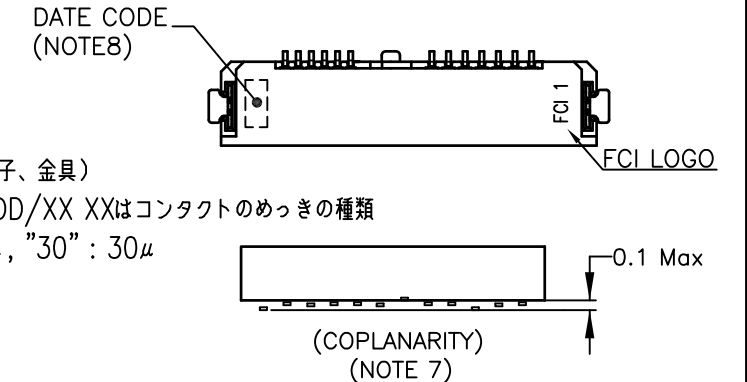
- LEAD-FREE
- PACKAGE SPEC
- E : 56mm WIDTH TAPE AND REEL (EMBOSS ASSY)
- PE : 44mm WIDTH TAPE AND REEL (EMBOSS ASSY)
- T : TRAY (TRAY ASSY)
- A : CONNECTOR ASSY (NOT PACKAGE)
- CONTACT TAIL LENGTH (DIM C)
- 0 : 1.0mm
- 1 : 0.7mm
- SIGNAL CONTACT TAIL WIDTH (DIM B)
- 0 : 0.35mm
- 1 : 0.40mm
- HSG BOSS LENGTH (DIM A)
- 0 : 1.0mm
- 1 : 0.7mm
- 9 : 0mm (WITHOUT BOSS)
- CONTACT PLATING (CONTACT AREA / SOLDERING AREA)
- 0 : GOLD FLASH (0.05μm) / TIN PLATING
- 1 : 0.38μm GOLD PLATING / TIN PLATING
- 2 : 0.76μm GOLD PLATING / TIN PLATING
- 3 : GOLD FLASH (0.05μm) / GOLD FLASH (0.05μm)
- 4 : 0.76μm GOLD PLATING / GOLD FLASH (0.05μm)

NOTE

- MATERIAL : SEE TABLE
- FINISH : SEE TABLE AND P/N COMPOSITION TABLE
- COPLANARITY : 0.1 MAX. (CONTACT AND SOLDER PEG)
- DATE CODE MARK : YY/MM/DD/XX XX IS USED TO MARK CONTACT PLATING SPEC.
"05" : FLASH, "15" : 15μ, "30" : 30μ

注記

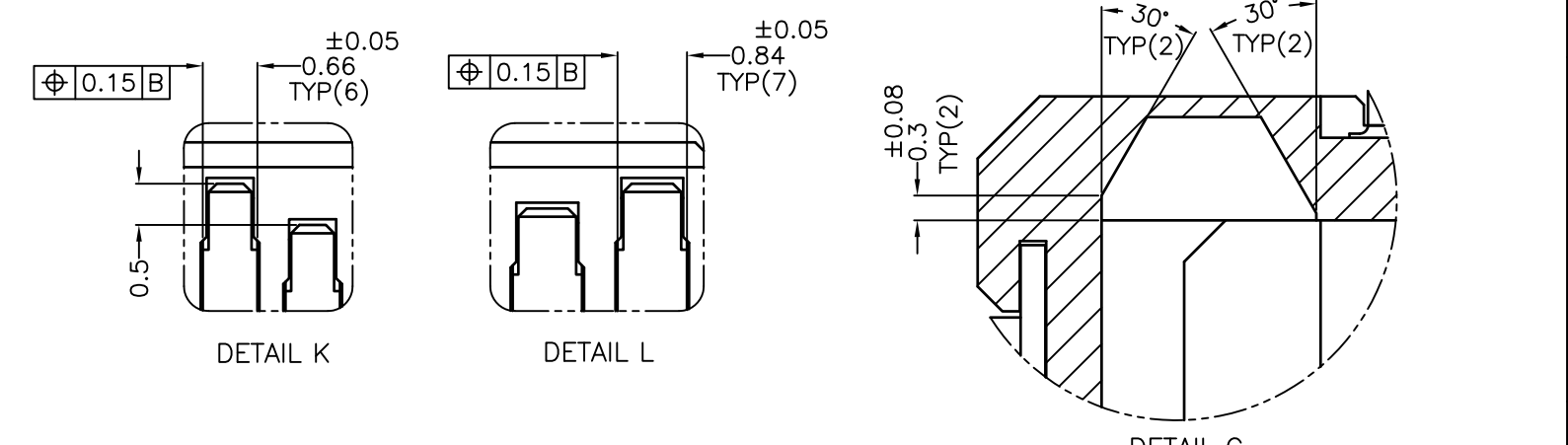
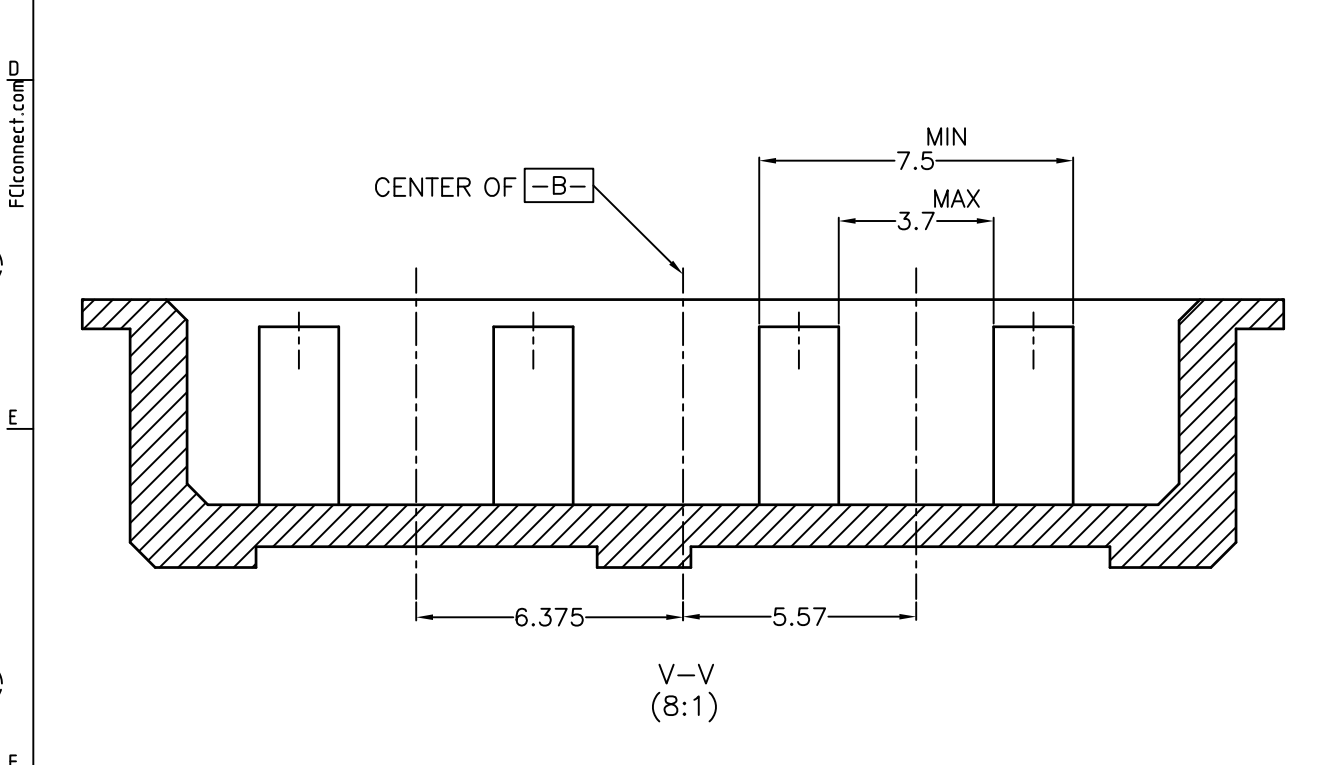
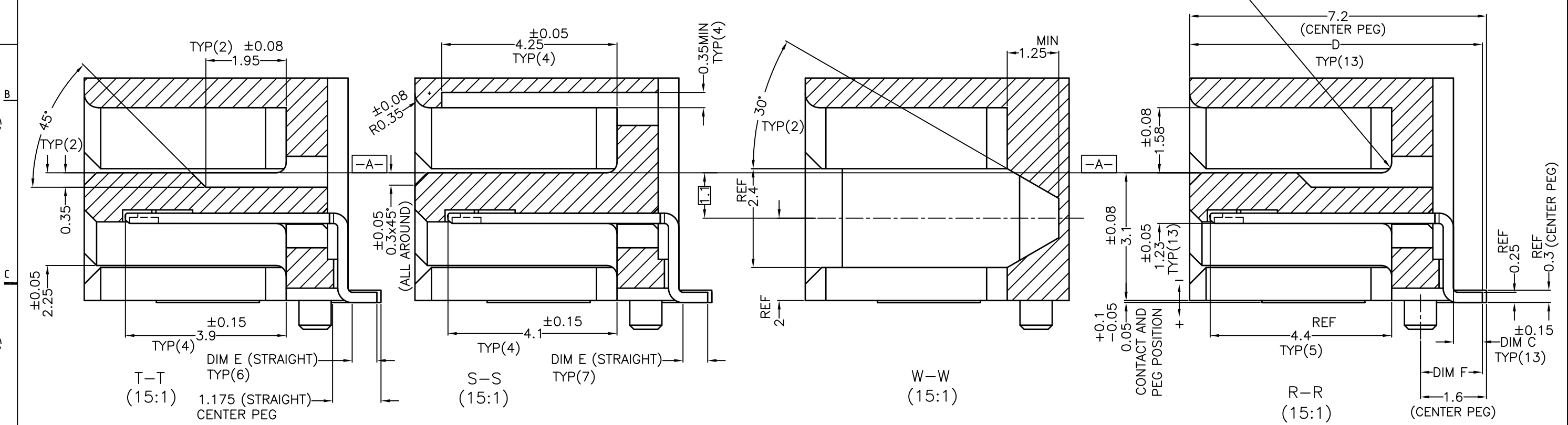
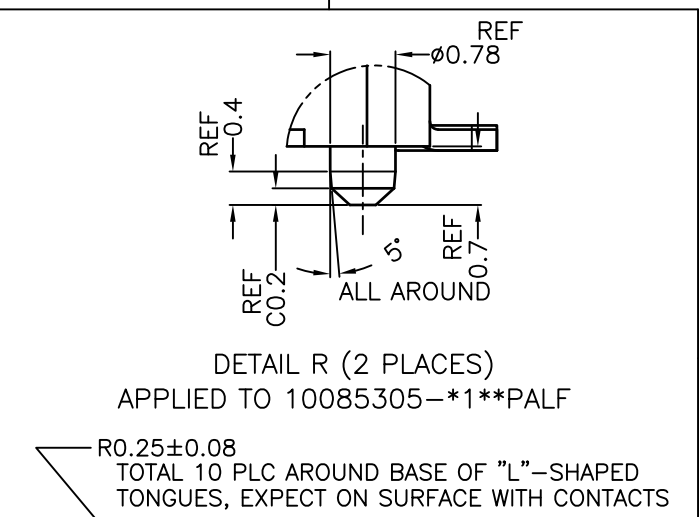
- 材料 : 表参照
- めっき : 表及び型番構成参照
- コプラナリティ : 0.1以下 (端子、金具)
- データコード刻印 : YY/MM/DD/XX XXはコンタクトのめっきの種類
"05" : FLASH, "15" : 15μ, "30" : 30μ



mat'l. code	surface	tolerance	projection	product family	CODE
---	ISO 1302	ISO 406	ISO 1101	530F SATA PLUG SLIM LINE	JP
ltr	description	ecn no	dr	date	tolerances unless specified
A	RELEASED	J08-0078	N.S	2008-2-28	angles linear
G	REVISED	J09-0087	N.S	2009-3-6	±2'
H	REVISED	J09-0134	N.S	2009-4-13	dr
J	REVISED	J09-0225	N.S	2009-6-10	engr
K	REVISED	J09-0425	N.S	2010-1-27	chr
L	REVISED	EX-J-011347	N.S	2012-04-19	appd
sheet index	revision sheet				

FCI
FCIconnect.com
Copyright FCI

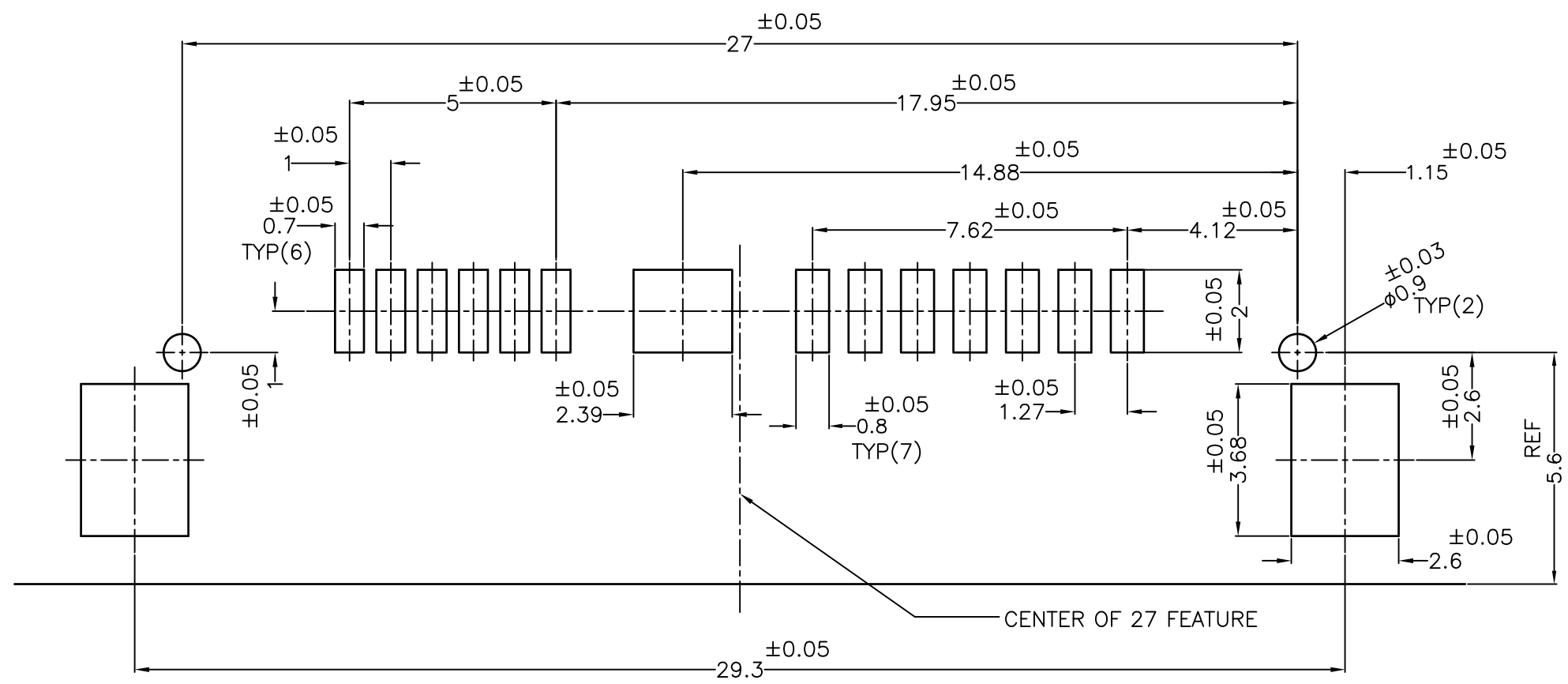
PRODUCT NO.	CONTACT AREA PLATING	SOLDERING AREA PLATING	HSG BOSS HEIGHT (DIM A)	TAIL WIDTH (DIM B)	TAIL LENGTH (DIM C)	TAIL LENGTH (DIM D)	TAIL LENGTH (DIM E)	TAIL LENGTH (DIM F)								
10085305-0010ALF	GOLD FLASH 0.05um[2u"] MIN	1.91um [75u"] MIN. 100% TIN	1.0mm	0.4mm	1.0mm	7.4mm	0.9mm	1.8mm								
10085305-0101PALF	GOLD FLASH 0.05um[2u"] MIN	1.91um [75u"] MIN. 100% TIN	0.7mm	0.35mm	0.7mm	7.1mm	0.6mm	1.5mm								
10085305-0901ALF	GOLD FLASH 0.05um[2u"] MIN	1.91um [75u"] MIN. 100% TIN	----	0.35mm	0.7mm	7.1mm	0.6mm	1.5mm								
10085305-0110PALF	GOLD FLASH 0.05um[2u"] MIN	1.91um [75u"] MIN. 100% TIN	0.7mm	0.4mm	1.0mm	7.4mm	0.9mm	1.8mm								
10085305-2010ALF	GOLD 0.76um[30u"] MIN	1.91um [75u"] MIN. 100% TIN	1.0mm	0.4mm	1.0mm	7.4mm	0.9mm	1.8mm								
10085305-2110PALF	GOLD 0.76um[30u"] MIN	1.91um [75u"] MIN. 100% TIN	0.7mm	0.4mm	1.0mm	7.4mm	0.9mm	1.8mm								
10085305-2101PALF	GOLD 0.76um[30u"] MIN	1.91um [75u"] MIN. 100% TIN	0.7mm	0.35mm	0.7mm	7.1mm	0.6mm </tr <tr> <td>10085305-4100PALF</td> <td>GOLD 0.76um[30u"] MIN</td> <td>GOLD FLASH 0.05um[2u"] MIN</td> <td>0.7mm</td> <td>0.35mm</td> <td>1.0mm</td> <td>7.4mm</td> <td>0.9mm</td> <td>1.8mm</td> </tr>	10085305-4100PALF	GOLD 0.76um[30u"] MIN	GOLD FLASH 0.05um[2u"] MIN	0.7mm	0.35mm	1.0mm	7.4mm	0.9mm	1.8mm
10085305-4100PALF	GOLD 0.76um[30u"] MIN	GOLD FLASH 0.05um[2u"] MIN	0.7mm	0.35mm	1.0mm	7.4mm	0.9mm	1.8mm								



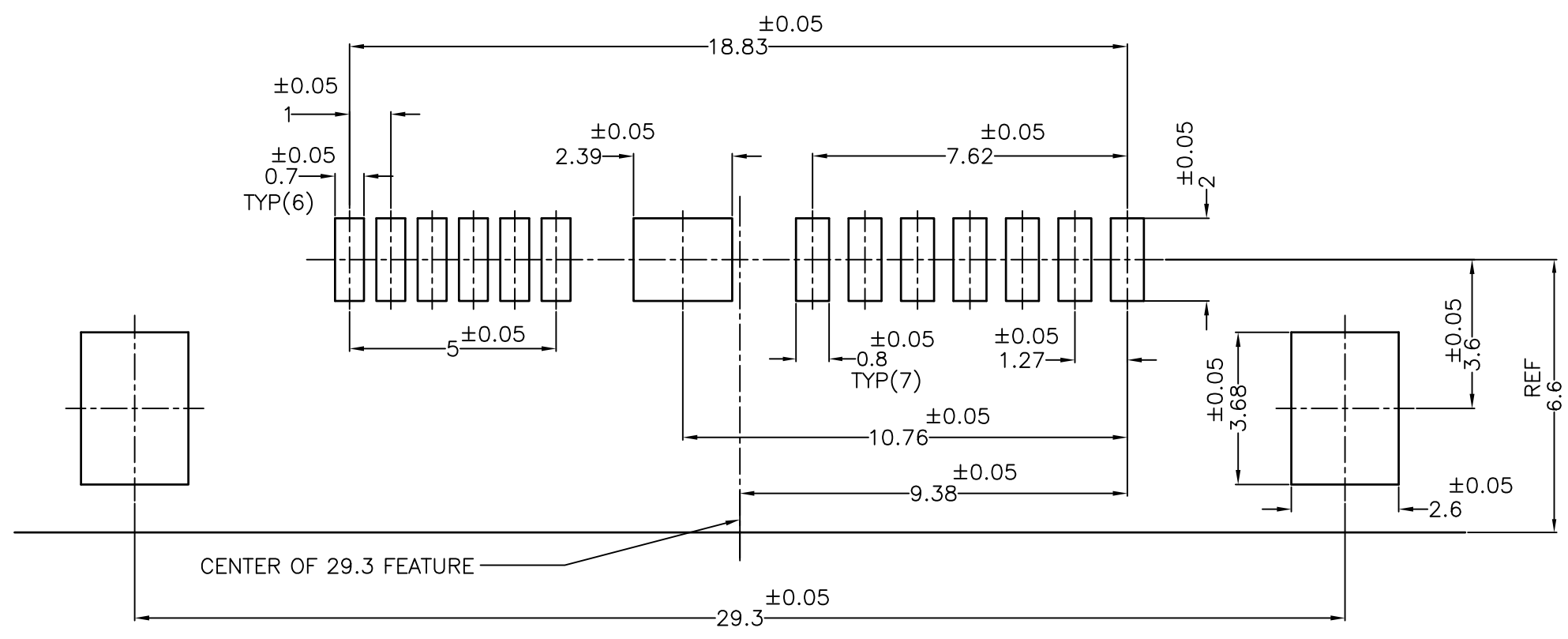
CONNECTOR ASSY

mat'l. code		surface		tolerance		projection		product family		CODE	
----		ISO 1302		ISO 406		mm		530F SATA PLUG SLIM LINE		JP	
A		RELEASED		J08-0078		N.S		2008-2-28		file	
G		REVISED		J09-0087		N.S		2009-3-6		SLIM LINE SATA 7+6P PLUG STANDARD, R/A SMT	
H		REVISED		J09-0134		N.S		2009-4-13		scale 16:1	
J		REVISED		J09-0225		N.S		2009-6-10		engr	
K		REVISED		J09-0425		N.S		2010-1-27		chr	
L		REVISED		EX-J-011347		N.S		2012-04-19		appd	
sheet index		revision sheet								M.KAJIURA	
										2012-04-19	
										FCJ	
										dwg no	
										10085305	
										sheet 3 of 4 size	
										A2	
										type	
										PRODUCT CUSTOMER Drawing	
										Rev.	
										L	

Copyright FCJ
FCJconnect.com



RECOMMENDED PCB PATTERN LAYOUT (WITH BOSS TYPE)



RECOMMENDED PCB PATTERN LAYOUT (WITHOUT BOSS TYPE)

mat'l. code		surface		tolerance		projection		product family		CODE	
---		ISO 1302		ISO 406		1st angle		530F SATA PLUG SLIM LINE		JP	
A		RELEASED		J08-0078		N.S		2008-2-28		tolerances unless otherwise specified	
G		REVISED		J09-0087		N.S		2009-3-6		0.X ±0.2	
H		REVISED		J09-0134		N.S		2009-4-13		0.XX ±0.2	
J		REVISED		J09-0225		N.S		2009-6-10		0.XXX ±0.2	
K		REVISED		J09-0425		N.S		2010-1-27		scale 10:1	
L		REVISED		EX-J-011347		N.S		2012-04-19		sheet 4 of 4 size	
sheet index		revision		sheet		sheet		sheet		sheet	
1		1		1		1		1		1	

FCI
FCIconnect.com
Copyright FCI