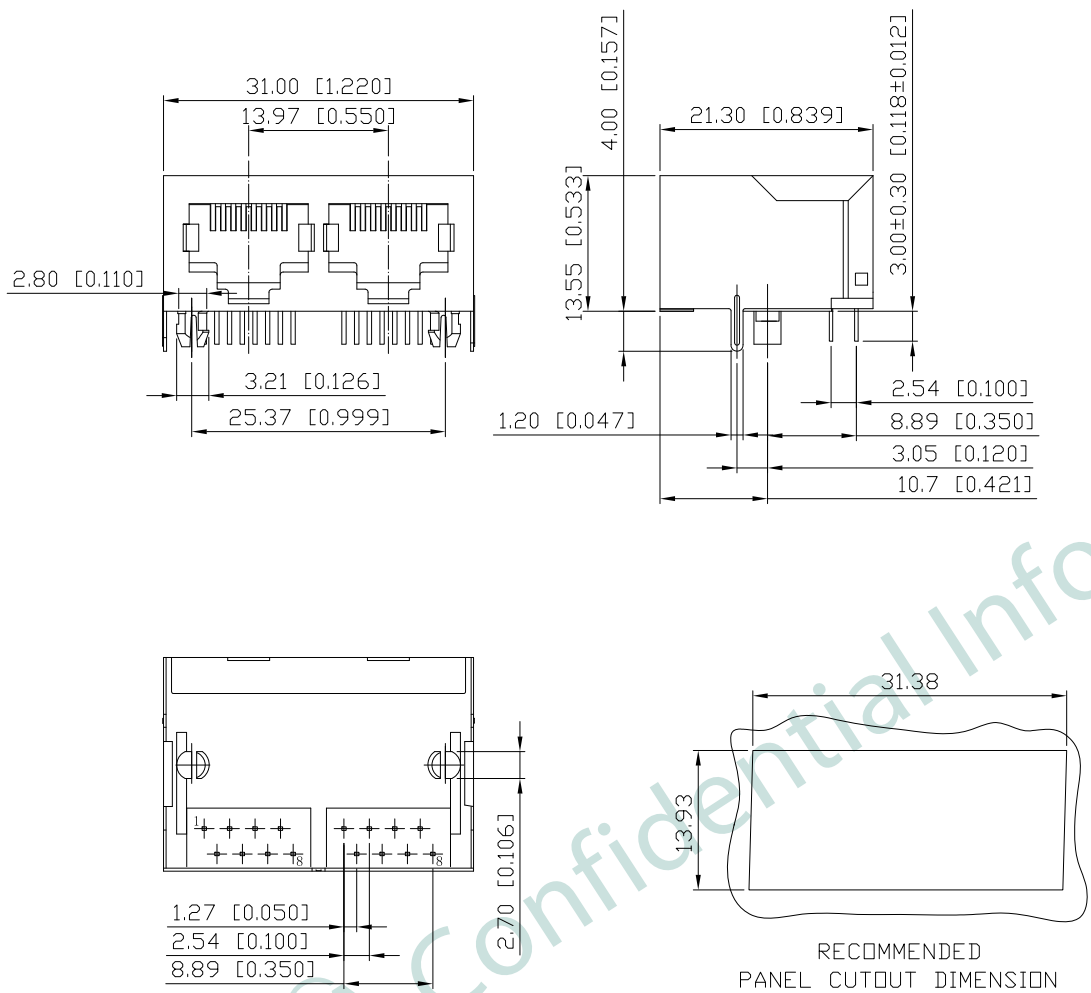


1. MECHANICAL DIMENSIONS :

REV.	DATE	DESCRIPTION
01	Mar. 07, '19	1st RELEASE

A
B
C
D
E
F

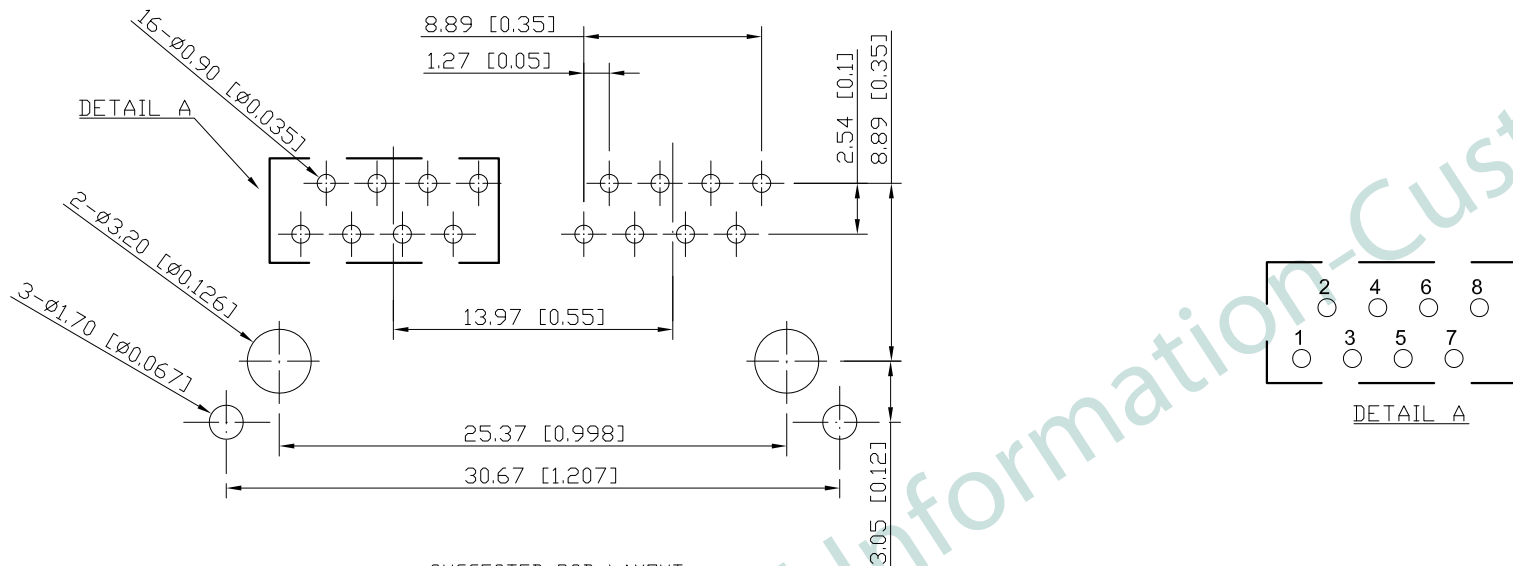


- NOTES:
- MATERIAL:
HOUSING: HIGH THERMOPLASTIC, UL94V-0, BLACK
CONTACTS: $\phi=0.46\text{mm}$ PHOS-BRONZE,
GOLD FLASH PLATING ON CONTACT AREA,
NICKEL UNDERPLATING OVERALL
SHIELD: COPPER ALLOY, NICKEL PLATING
 - OPERATING TEMPERATURE: $-40^{\circ}\text{C}\sim+85^{\circ}\text{C}$
 - INSERTION FORCE: 4 POUNDS MAX.
EXTRACTION FORCE: 4 POUNDS MAX.
 - DURABILITY: 750 MATING CYCLED MIN.
 - CAVITY CONFORMS TO FCC RULES AND REGULATIONS PART 68, SUBPART F.
 - UNSPECIFIED TOLERANCE: .XX $\pm 0.25[0.010]$
.X $\pm 0.30[0.012]$

PART NO		KRK-S-02-8-8-0-FA5-XXX		
TITLE	RJ45 1X2, 8P8C, W/O LED, SHIELDED.			
REV : 01				
UNIT	DRAWN	CHKD	DATE	SHEET
mm[inch]	CINDY	VINCENT	Mar. 07, '19	1 of 3

ROHS Compliant

2. PCB LAYOUT :



SUGGESTED PCB LAYOUT
TOP VIEW SCALE 2:1
DIMENSIONAL TOLERANCE: .XX ±0.08[0.003]

KRK-S-02-8-8-0-FA5-XXX

PRODUCT SERIES
KRK: LATCH DOWN THRU HOLE

SHIELDED TYPE
S: SHIELDED

NO. OF PORTS

NO. OF POSITION

NO. OF CONTACT

RUNNING CODE

LED COLOR OPTION

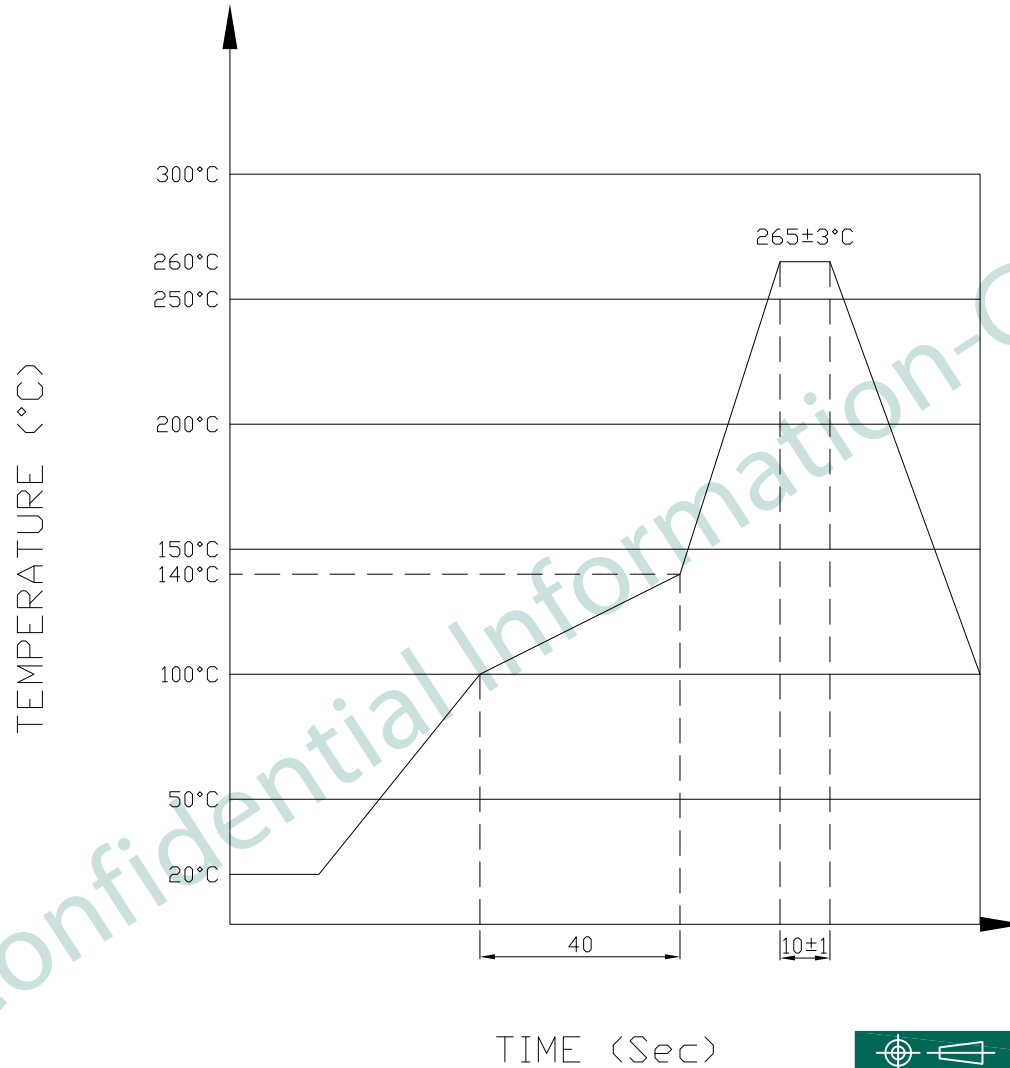
SERIAL NUMBER

CONTACT GOLD PLATING
5: GOLD FLASH

CUSTOMER CODE

PART NO		KRK-S-02-8-8-0-FA5-XXX		
TITLE	RJ45 1X2, 8P8C, W/O LED, SHIELDED.			
REV : 01				
UNIT	DRAWN	CHKD	DATE	SHEET
mm[inch]	CINDY	VINCENT	Mar. 07, '19	2 of 3

3. PROFILE OF WAVE SOLDER :



The measuring point for the specified temperature shall be on the soldered part of the lead

PART NO		KRK-S-02-8-8-0-FA5-XXX		
TITLE	RJ45 1X2, 8P8C, W/O LED, SHIELDED.			
REV : 01				
UNIT	DRAWN	CHKD	DATE	SHEET
mm[inch]	CINDY	VINCENT	Mar. 07, '19	3 of 3