

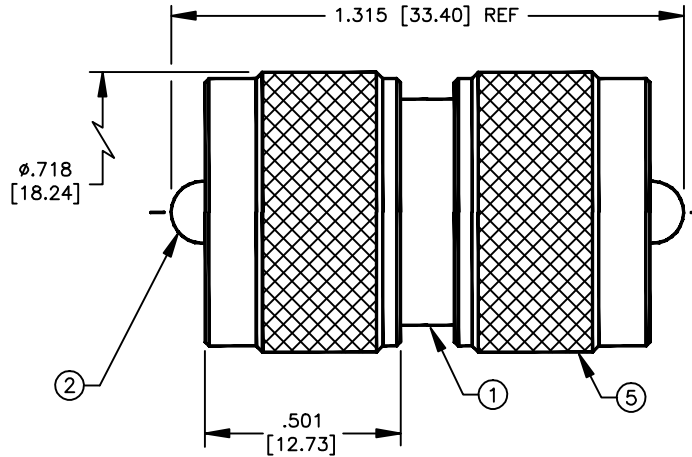
# SPECIFICATION CONTROL DRAWING

THIS DRAWING CONTAINS INFORMATION PROPRIETARY TO RF INDUSTRIES, LTD. ANY UNAUTHORIZED USE OF THIS DRAWING IS EXPRESSLY PROHIBITED. ANY VIOLATION IS PUNISHABLE UNDER U.S. COPYRIGHT LAWS.

REV	DESCRIPTION	DWN	DATE	APPROVED
B	THREAD CHANGE	CJ	4/06/92	J. BENZ
C	STANDARDIZE \ RPLS DWG 7482	DM	11/04/92	J. BENZ
D	UPDATE TO SHOW INDIVIDUAL PART SECTIONS	BMA	2/04/97	R. RICE
E	DIELECTRIC NOW TEFLON	CZS	10/20/98	R. RICE

ALL DIMENSIONS ARE REFERENCE ONLY

000000



## SPECIFICATIONS:

IMPEDANCE: NON CONSTANT  
 WORKING VOLTAGE: 500 VRMS @ SEA LEVEL  
 FREQUENCY RANGE: 0-300 MHz

DIMENSIONS ARE IN INCHES AND [MILLIMETERS]

UNLESS OTHERWISE NOTED TOLERANCES ARE:  
 DECIMALS DIAMETER

**RF connectors**  
 DIVISION OF RF INDUSTRIES, LTD.

7610 MIRAMAR RD  
 SAN DIEGO, CA 92126  
 (619)549-6340  
 (619)549-6345 FAX

## RFU-538/DM

DOUBLE UHF MALE ADAPTER

ITEM	DESCRIPTION	QTY	MATERIAL	FINISH
5	SHELL	2	BRASS	NICKEL
4	RETAINING RING	2	BRASS	NICKEL
3	DIELECTRIC	2	PTFE	NONE
2	PIN	1	BRASS	SILVER
1	BODY	1	BRASS	NICKEL

DRAWN	C. ZUNIGA	10/20/98
CHECKED		
ORJ DRAWN	D. MORRIS	11/4/92
APPROVALS		DATE

SIZE	CABLE GROUP	DWG NO.	REV
A	N/A	7810	E
SCALE:	2:1	CAD FILE	13ARC B
			SHEET 1 OF 1