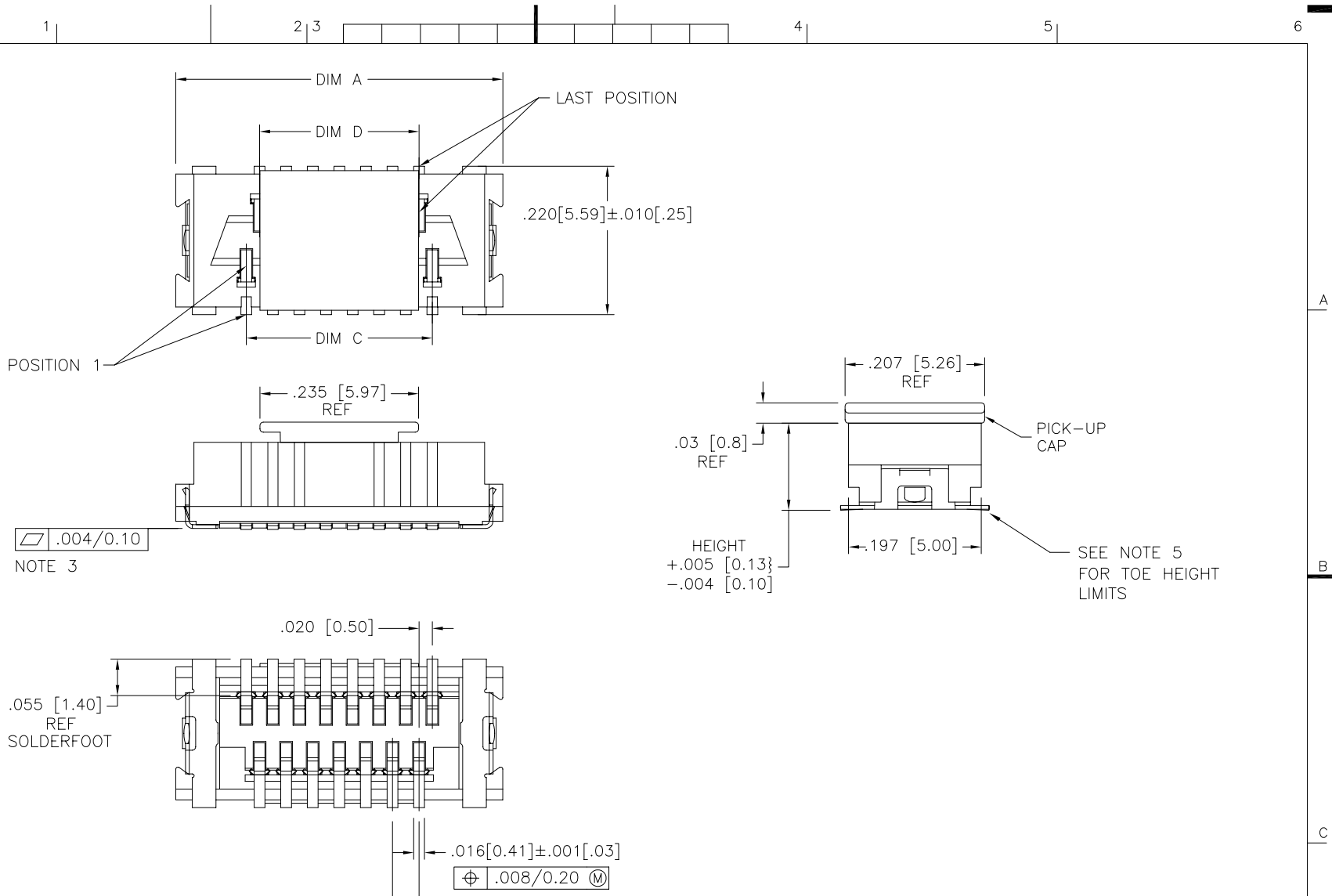


PRODUCT NUMBER
SEE TABLE



$\sqrt{\text{ }} .004/0.10$
NOTE 3

.207 [5.26]
REF
PICK-UP CAP
.03 [0.8]
REF
HEIGHT
+.005 [0.13]
-.004 [0.10]
SEE NOTE 5
FOR TOE HEIGHT
LIMITS
.197 [5.00]

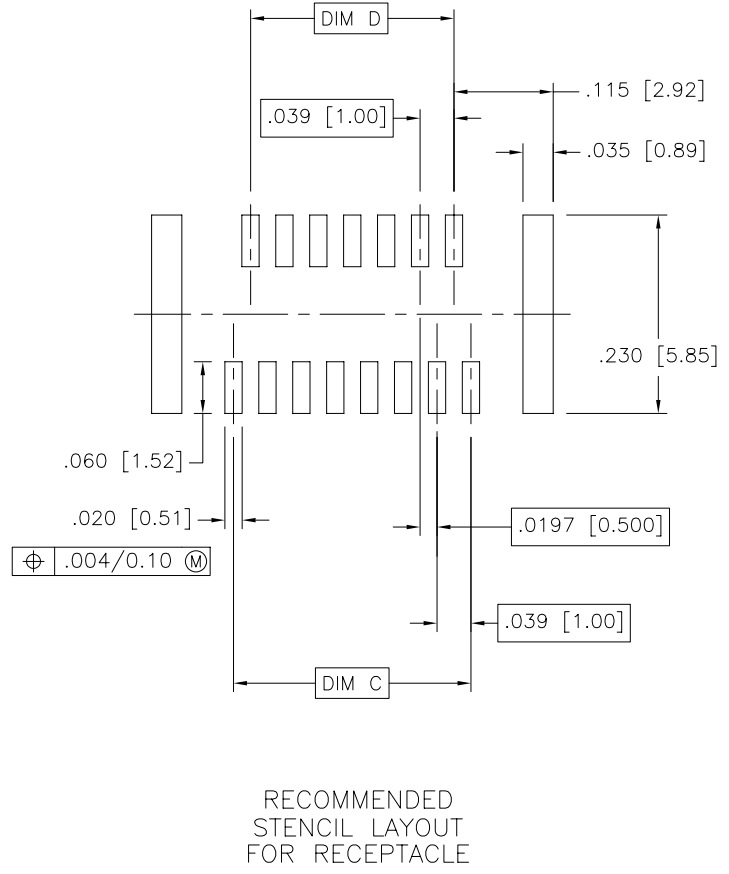
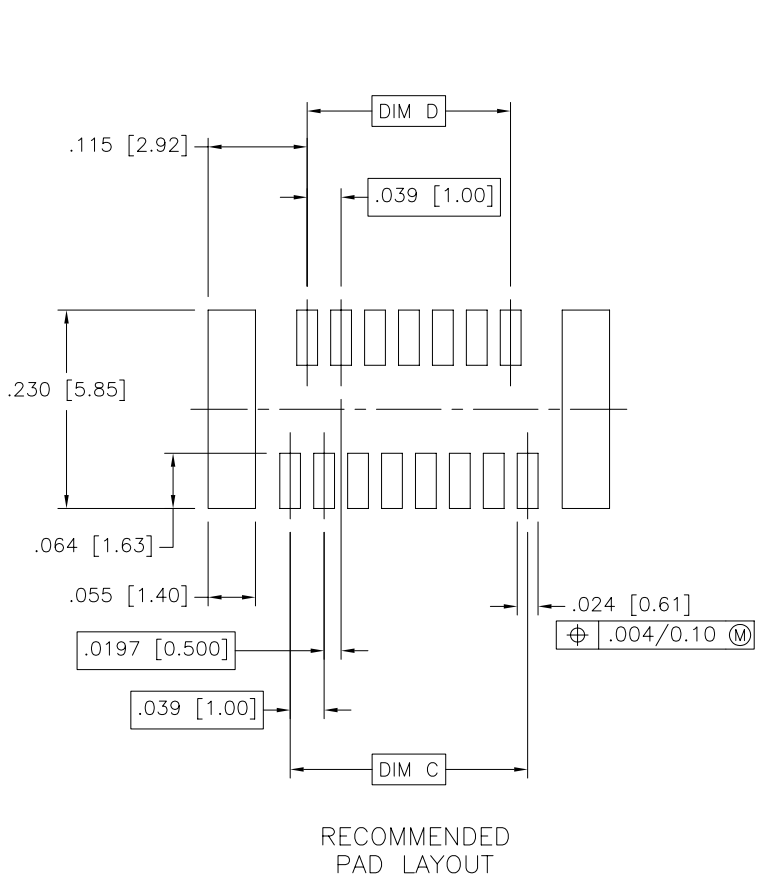
.020 [0.50]
.055 [1.40]
REF
SOLDERFOOT
.016 [0.41] ± .001 [.03]
 $\oplus .008/0.20 \text{ (M)}$
.039 [1.00]
TYP

mat'l. code		surface ISO 1302 <input checked="" type="checkbox"/>		tolerance ISO 406 ISO 1101		projection 		product family CONAN	
ltr		ecn no		date		tolerances unless otherwise specified		title	
A		V91072		EPK 5/6/99		.XX±.01/.3		CONAN™ CONNECTOR	
B		M06-0232		AGS 06/12/06		linear .xxx±.005/.13		RECEP. ASS'Y (BLACK)	
						0°±2'		scale 5:1	
				dr E.KROPIEWNICK 5/6/99				dwg no 98209 sheet 1 of 3 size A3	
				enr D. WHITING 5/6/99				type Product Customer Drawing	
				chr D. WHITING 5/6/99					
				app D. WHITING 5/6/99					
sheet index		revision sheet		B B B					
				1 2 3					



Copyright FCI

PRODUCT NUMBER
SEE TABLE



FCIconnect.com

Copyright FCI

mat'l. code		surface ISO 1302 ✓		tolerance ISO 406 ISO 1101		projection ⊕		product family CONAN	
ltr		ecn no dr		date		tolerances unless otherwise specified		title	
B						.XX±.01/.3 linear .xxx±.005/.13 .xxxx±.0020/.051		INCH/MM	
				0°±2'				CONAN™ CONNECTOR RECEP. ASS'Y (BLACK)	
				dr E.KROPIEWNICK 5/6/99		scale 5:1		dwg no sheet 2 of 3 size	
				enr D. WHITING 5/6/99		FCI		98209 A3	
				chr D. WHITING 5/6/99				type Product Customer Drawing	
				appd D. WHITING 5/6/99					
sheet index		revision sheet							

form: A3

PRODUCT NUMBER	POS	DIM A	DIM C	DIM D
98209-31131	31	.800/20.30	.591/15.00	.551/14.00

98209-W X Y ZZ

ZZ	NUMBER OF POSITIONS
31	31

Y	HEIGHT
1	.129/3.28

X	PLATING
1	15 μ " / 0.38 μ GXT

W	PACKAGING
3	TAPE & REEL w/CAP

NOTES :

- MATERIALS :
 RECEPTACLE HOUSING - LCP, COLOR : BLACK
 PICK & PLACE CAP - LCP, COLOR : NATURAL
 RECEPTACLE TERMINALS - 172 BERYLIUM COPPER,
 PLATED WITH 15 μ " / .38 μ GXT IN CONTACT AREA
 AND 100 μ " / 2.54 μ SnPb ON SOLDER LEGS WITH
 AN OVERALL 50 μ " / 1.27 μ Ni UNDERPLATE.
 RETENTION DEVICE - 260 BRASS,
 PLATED WITH 100 μ " / 2.54 μ SnPb OVER
 NICKEL.
- REFERENCE GES-12-006 FOR PRODUCT PERFORMANCE DATA.
- SEE TA-774 FOR FURTHER DESCRIPTION OF HOW THIS DIMENSION IS APPLIED.
- RECOMMENDED SOLDER PASTE THICKNESS IS .006 TO .008 INCHES THICK.
- THE TOE HEIGHT OF THE SOLDER TAIL SHALL BE MEASURED FROM THE LOWEST POINT OF THE .004 CO-PLANARITY GRAVITY PLANE. THIS MEASUREMENT IS NOT TO EXCEED A WINDOW OF .000 TO .007.
- THREE SLOTS MAY BE LOCATED AT EITHER END OF HOUSING.

mat'l. code		surface ISO 1302 <input checked="" type="checkbox"/>		tolerance ISO 406 ISO 1101		projection 		product family CONAN				
ltr	ecn	no	dr	date	tolerances unless otherwise specified		title		CONAN™ CONNECTOR			
B					angles	linear	INCH/MM		RECEP. ASS'Y (BLACK)			
					0°±2'	.XX±.01/.3 .xxx±.005/.13 .xxxx±.0020/.051	scale 1:1		sheet 3 of 3 size			
					dr	E.KROPIEWNICK	5/6/99			98209		
					enfr	D. WHITING	5/6/99			A3		
					chr	D. WHITING	5/6/99			type		Product Customer Drawing
					appd	D. WHITING	5/6/99					
sheet index	revision sheet											