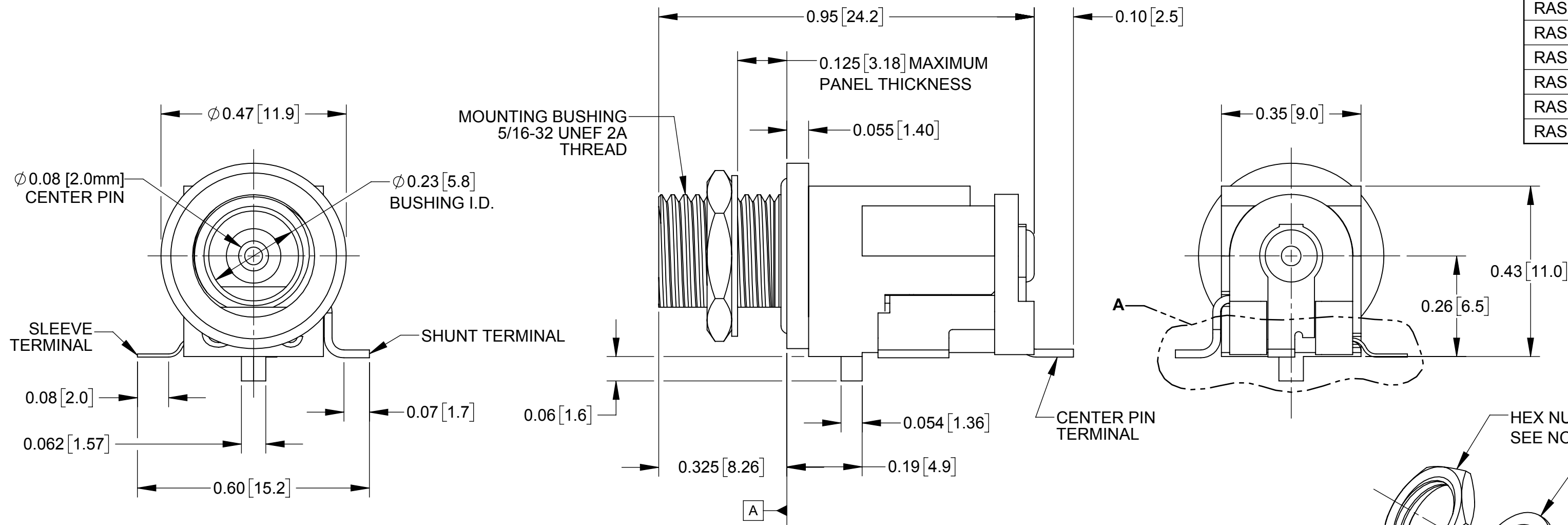
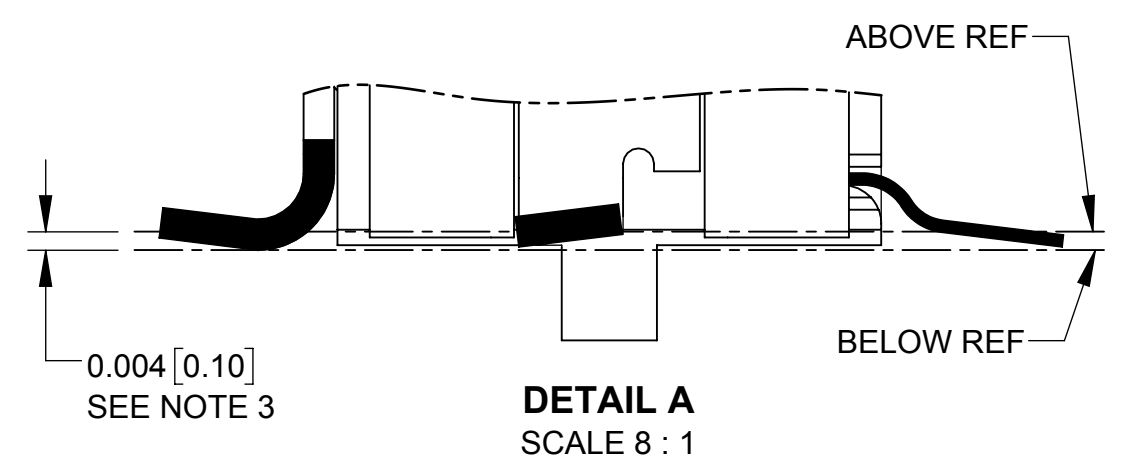
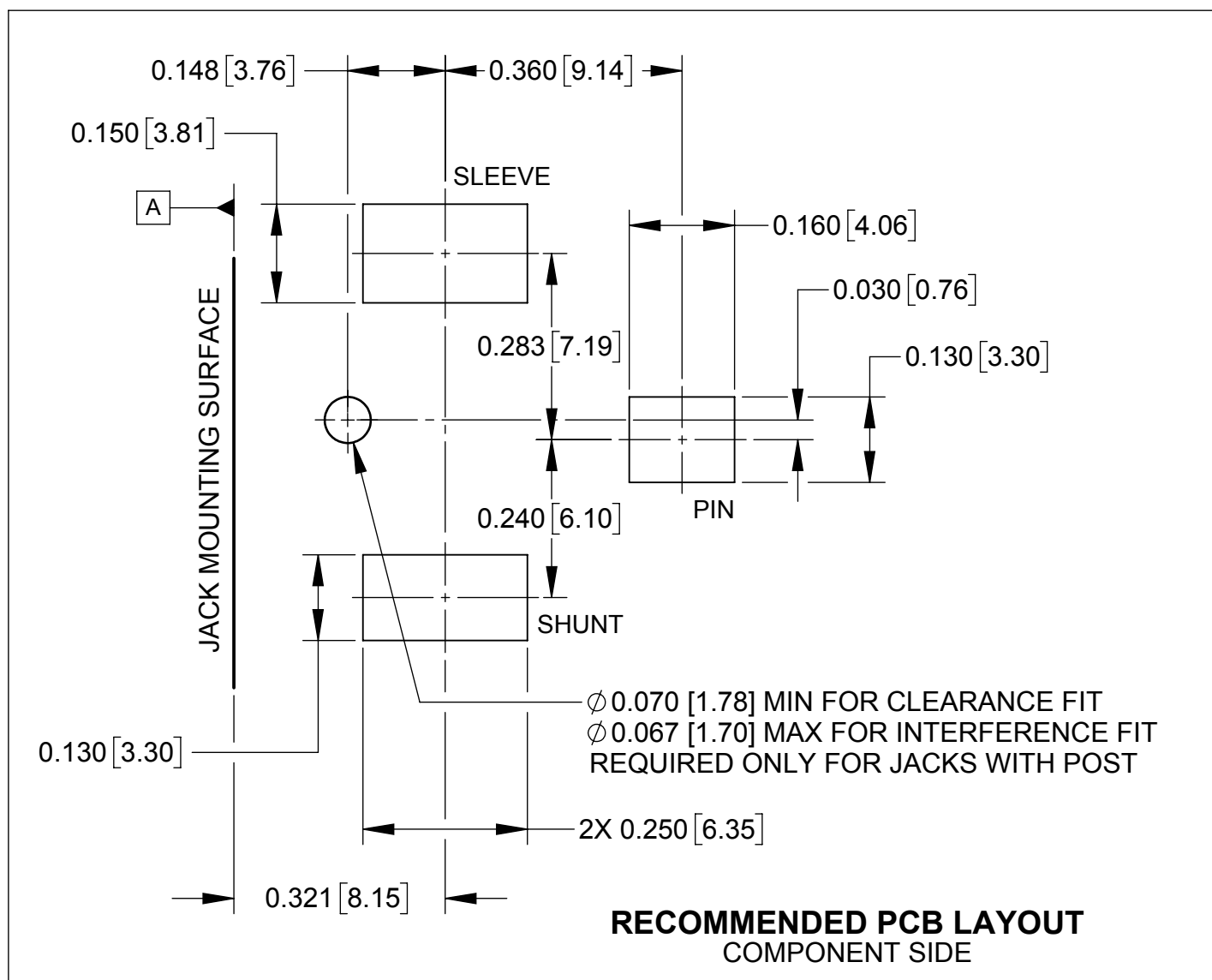
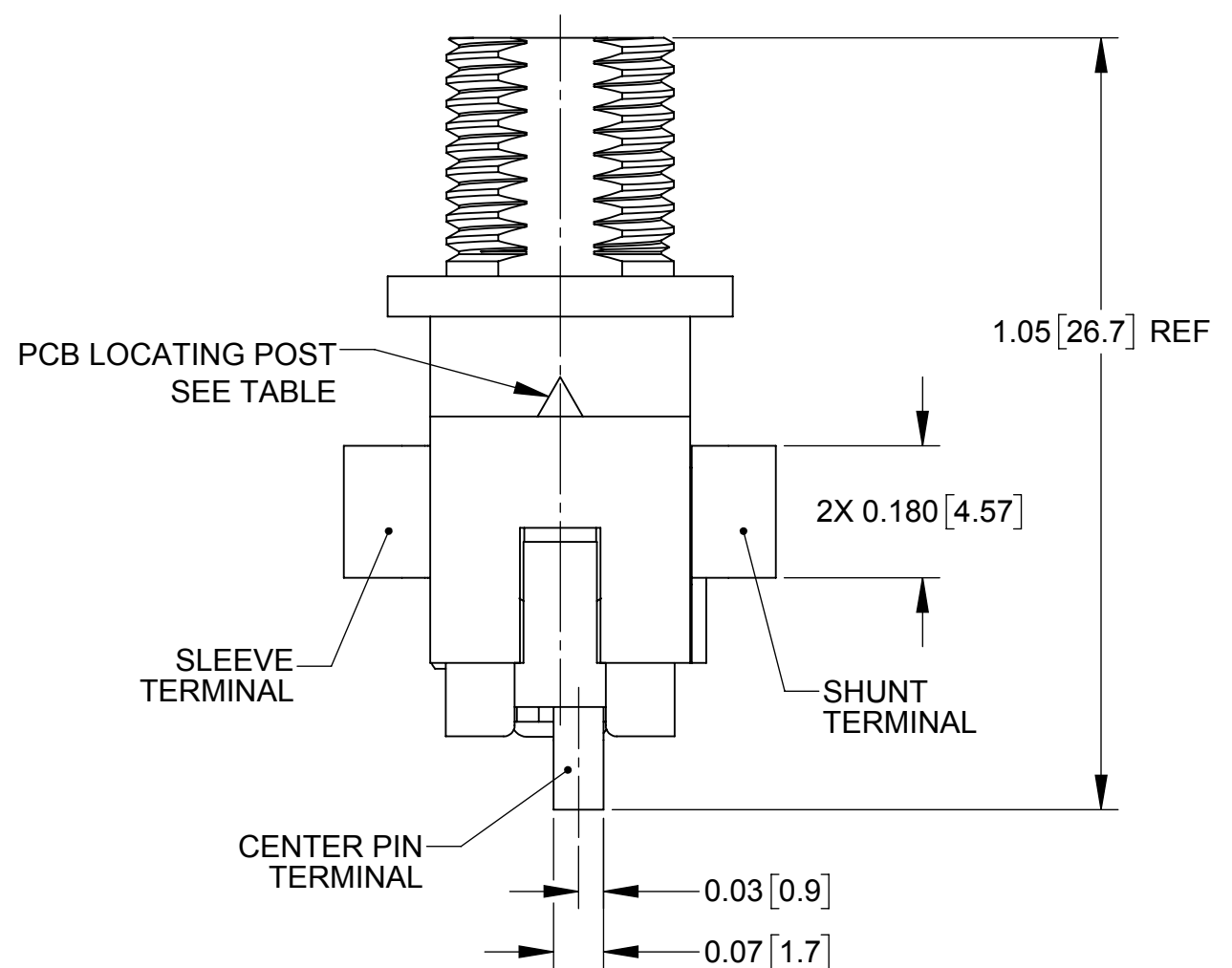
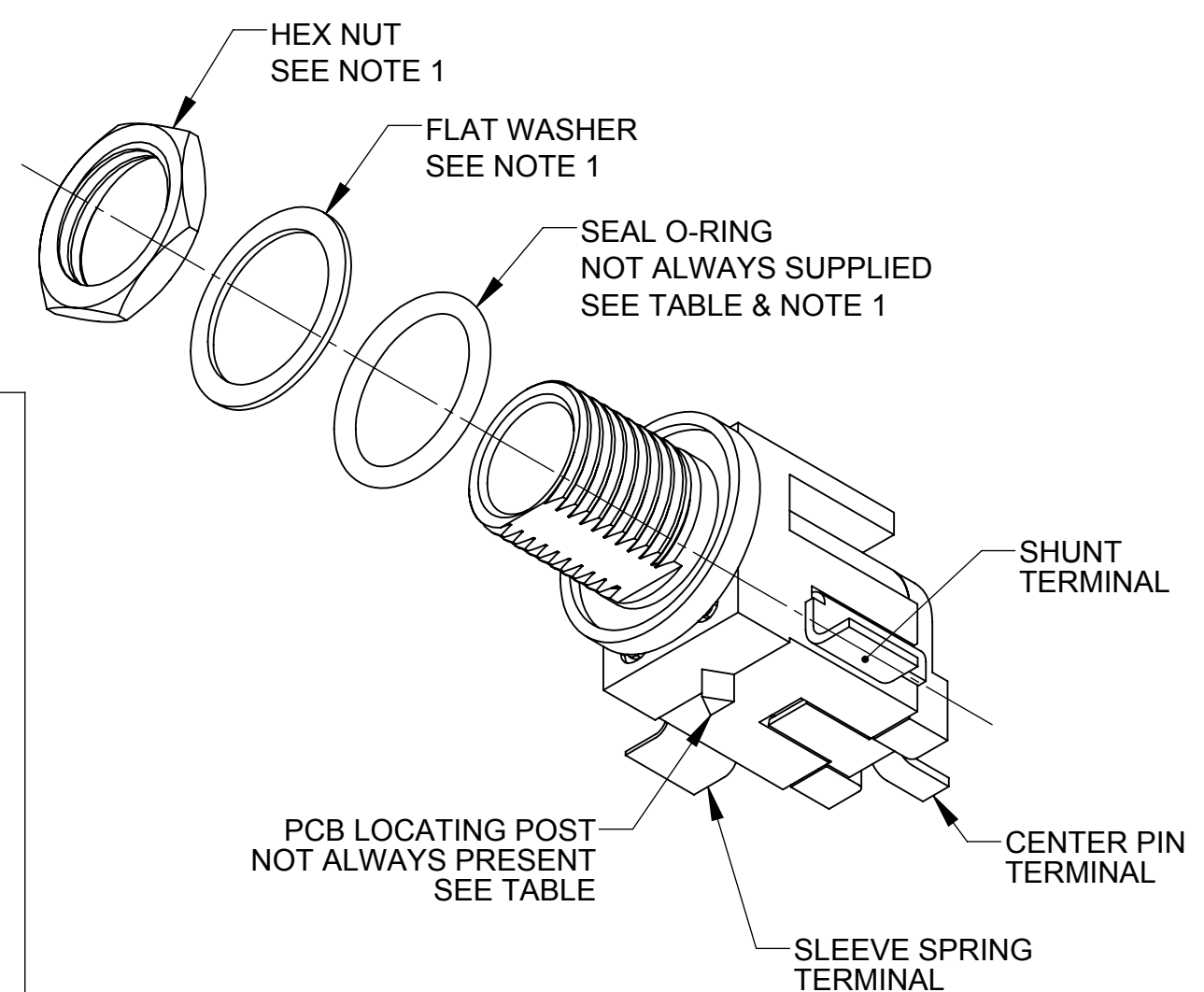
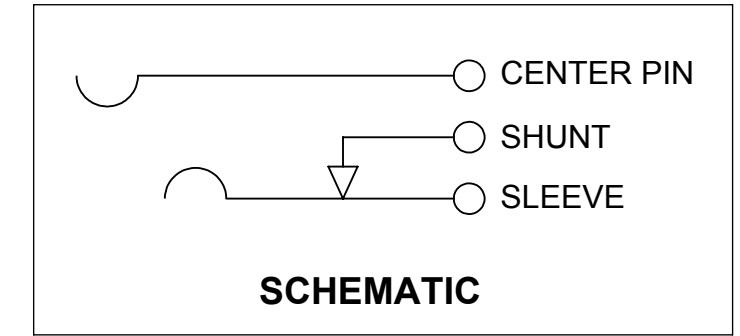


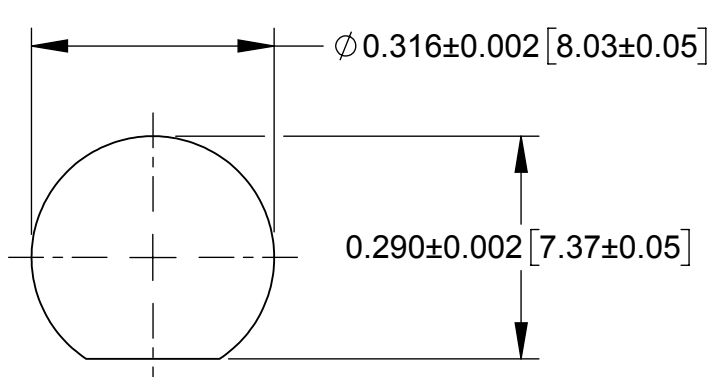
PART NUMBER	SEAL O-RING	PCB LOCATING POST	TERMINAL PLATING
RASM10	NO	NO	SILVER
RASM10S	YES	NO	
RASM10P	NO	YES	
RASM10PS	YES	YES	TIN
RASSM10	NO	NO	
RASSM10S	YES	NO	
RASSM10P	NO	YES	
RASSM10PS	YES	YES	



RASM10PS SHOWN HERE



- NOTES:
- HEX NUT, WASHER, AND O-RING (IF REQUIRED) SUPPLIED UNASSEMBLED.
 - MATERIAL:
HOUSING, COVER: THERMOPLASTIC, BLACK
MOUNTING BUSHING, HEX NUT: COPPER ALLOY, NICKEL PLATED
CENTER PIN: COPPER ALLOY, NICKEL PLATED
PIN AND SHUNT TERMINALS: COPPER ALLOY, SILVER OR TIN PLATED
SLEEVE SPRING TERMINAL: SPRING COPPER ALLOY, SILVER OR TIN PLATED
FLAT WASHER: STEEL, NICKEL PLATED
O-RING: ELASTOMER, BLACK
 - HIGH POINT OR EDGE OF EACH OF THE THREE SOLDER TABS SHALL BE WITHIN A ZONE DEFINED BY COPLANARITY OF 0.004 INCH. SURFACE [A] SHALL BE 0.002 BELOW OR 0.010 ABOVE THE PLANE ESTABLISHED BY THE THREE HIGH POINTS OR EDGES OF THE THREE SOLDER TABS.
 - THESE PRODUCTS ARE RoHS COMPLIANT.



RECOMMENDED PANEL CUT-OUT

REV	ECO NUMBER	DATE	BY	APVD
A	27139	04/29/13	PC	TJK

UNLESS OTHERWISE SPECIFIED
1. ALL DIMENSIONS IN INCHES [mm]
- TWO PLACE DECIMALS ±0.02 [0.5]
- THREE PLACE DECIMALS ±0.005 [0.13]

THIS DRAWING DESCRIBES A DESIGN CONSIDERED PROPRIETARY IN NATURE, DEVELOPED AND MANUFACTURED BY SWITCHCRAFT INC. AND IS RELEASED ON A CONFIDENTIAL BASIS FOR IDENTIFICATION PURPOSES ONLY.				
SIZE	WIDTH	MULT	LBS/M	TEMPER
FINISH SPEC No.		MATERIAL SPEC No.		
FIRST USED ON		SCALE 4:1		
DATE DRAWN	BY	CHKD	APVD	
02/17/12	PNK	PNK	SRC	
NAME RA POWER JACKS, SMT HIGH AMP, Ø0.08 [2.0mm] PIN, RoHS		PART No. RA_SM10 SERIES		
SHEET 1 OF 1				REV A

CUSTOMER DRAWING

