

Materials and Finish

Housing: LCP
(reflow compatible),
UL 94V-0 Rated
Terminals: Copper Alloy,
Gold Flash all over
Nickel Plating

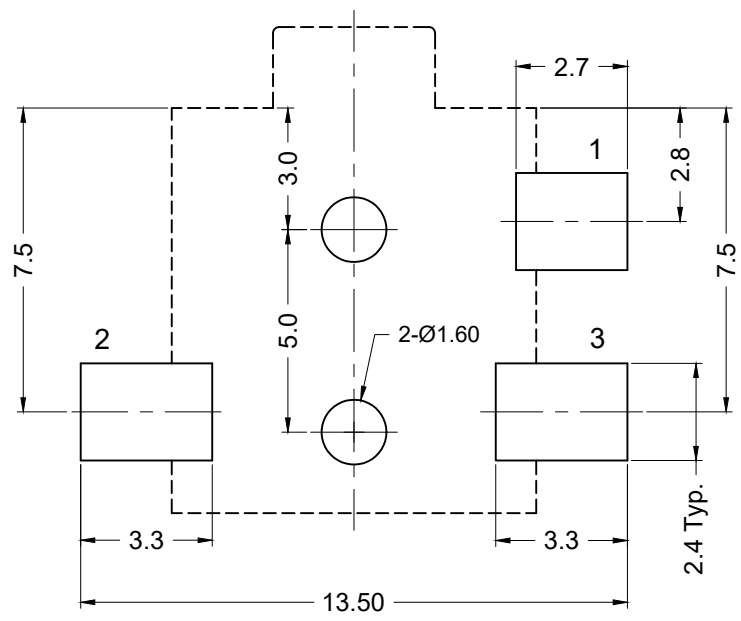
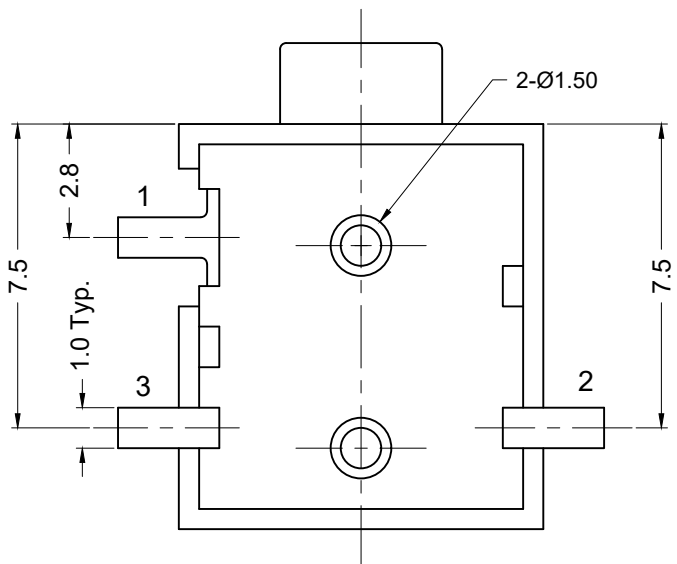
Electrical Characteristics

Contact Resistance:
Before Test: 30milliohms Max.
After Durability Test:
60 milliohms Max.
Insulation Resistance:
More than 100 Megohms
at 250V DC

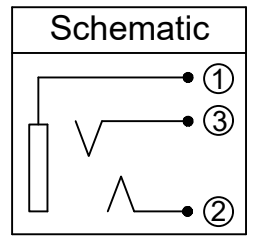
Dielectric Strength:
250V AC RMS for 1 minute

Mechanical Characteristics

Insertion Force:
0.4kg - 2.0kg
Extraction Force:
0.3kg - 2.0kg
Durability: 5000 mating cycles
Operating Temp:
-25°C to +85°C



Recommended PCB Layout
(top view)



Tolerances
X.X ± 0.25
X.XX ± 0.15
Unless Stated Otherwise



REV.	DATE	DESCRIPTION	REV. BY	CHK. BY	DRAWN BY	DATE
A0	9/22/05	New Drawing	R. Aguirre	H. MA	R. Aguirre	07/11/05
A1	6/1/06	Release Drawing	H. MA	N/A		
A2	03/24/08	change option	R. Aguirre	H. MA		
A3	12/12/08	ECO# 08-091	S. Vien	H. MA		
A4	08/14/18	Update Address	D. Shehan	N/A		

STX-2550-3NTR

Stereo Jack, 2.5mm, SMT

All Plastic Body, RoHS Compliant

