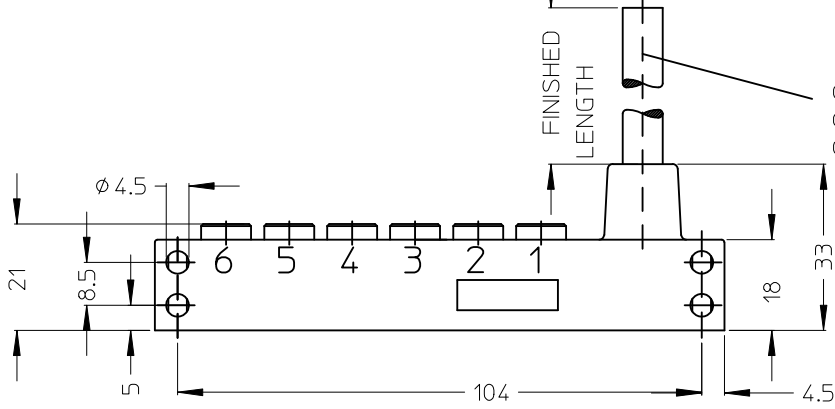
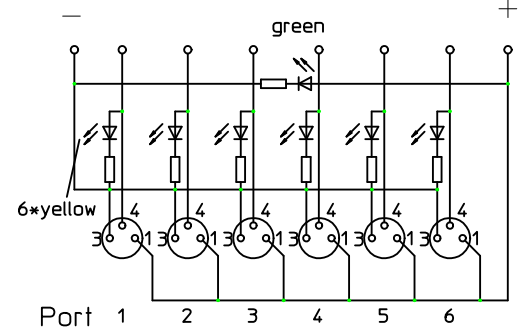
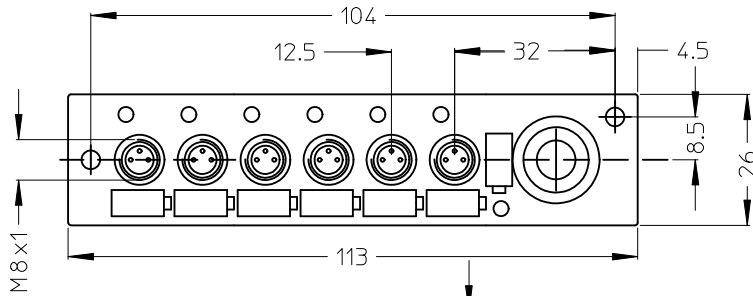


SAP-NUMBER	OLD PART NUMBER	FINISHED LENGTH
1201130028	BNY601P-FBP-05	5000



CABLE END:
OUTER SHEATH STRIPPED 100 mm
CONDUCTOR STRIP 5 mm

Contact configuration	wire colour	wire mm ²	Port	M8 connector Contact-No.
	braun/brown	0.75	1-6	1
	blau/blue (-)	0.75	1-6	3
	weiß/white	0.34	1	4
	grün/green	0.34	2	4
	gelb/yellow	0.34	3	4
	grau/grey	0.34	4	4
	rosa/pink	0.34	5	4
	rot/red	0.34	6	4

CLOSURE CAP

SAP no. 1203080677
QUANTITY 2

VOLTAGE RATING	10 - 30 VDC
AMPERAGE RATING PER PORT	2 A MAX./PORT 6 A MAX. TOTAL
PROTECTION	IP 67
OPERATING TEMPERATURE	-25°C / +90 °C

ITEM	COMPONENT	MATERIAL	FINISH
1	INSERT	PUR	BLACK
2	CONTAC SOCKET	BRASS	GOLD OVER NICKEL
3	O-RING	VITON	---
4	RECEPTACLE SHELL	BRASS	NICKEL PLATED
5	HOUSING	PBT	YELLOW
6	LABEL	ABS	WHITE
7	LENS	PA	CLEAR
8	CABLE	PUR	---

ENTER DESCRIPTION	QUALITY SYMBOLS
EC NO: WEU2010-0321	▽=0
DRWN: APOHL_WEU 2010/02/02	∇=0
CHKD: 2010/02/03	
APPR: FPACHER 2010/02/04	

GENERAL TOLERANCES (UNLESS SPECIFIED)	DIMENSION STYLE
mm INCH	MM ONLY
4 PLACES ± --- ± ---	DRAWN BY DATE
3 PLACES ± --- ± ---	APOHL_WEU 2010/02/02
2 PLACES ± --- ± ---	CHECKED BY DATE
1 PLACE ± 0.3 ± ---	
ANGULAR ± ---°	APPROVED BY DATE
	FPACHER 2010/02/03
DRAFT WHERE APPLICABLE MUST REMAIN WITHIN DIMENSIONS	MATERIAL NO.
	SEE TABLE

SCALE	DESIGN UNITS	THIRD ANGLE PROJECTION
1:1	METRIC	⊙ □
TITLE		
M8-MPIS 6 PORT CABLE 90 DEGREE 3 POL OUTLINE		
APPROVED BY DATE		
FPACHER 2010/02/03		
MATERIAL NO.		
SEE TABLE		
SIZE	THIS DRAWING CONTAINS INFORMATION THAT IS PROPRIETARY TO MOLEX INCORPORATED AND SHOULD NOT BE USED WITHOUT WRITTEN PERMISSION	
A3		

SCALE		DESIGN UNITS	THIRD ANGLE PROJECTION
1:1		METRIC	⊙ □
TITLE			
M8-MPIS 6 PORT CABLE 90 DEGREE 3 POL OUTLINE			
APPROVED BY DATE			
FPACHER 2010/02/03			
MATERIAL NO.			
SEE TABLE			
DOCUMENT NO.		SHEET NO.	
SD-120113-024		1 OF 1	