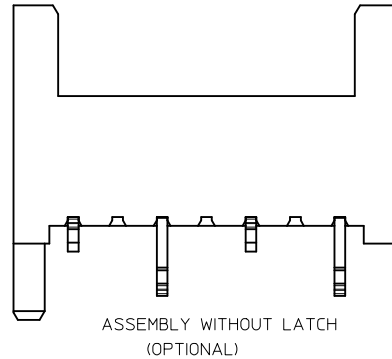
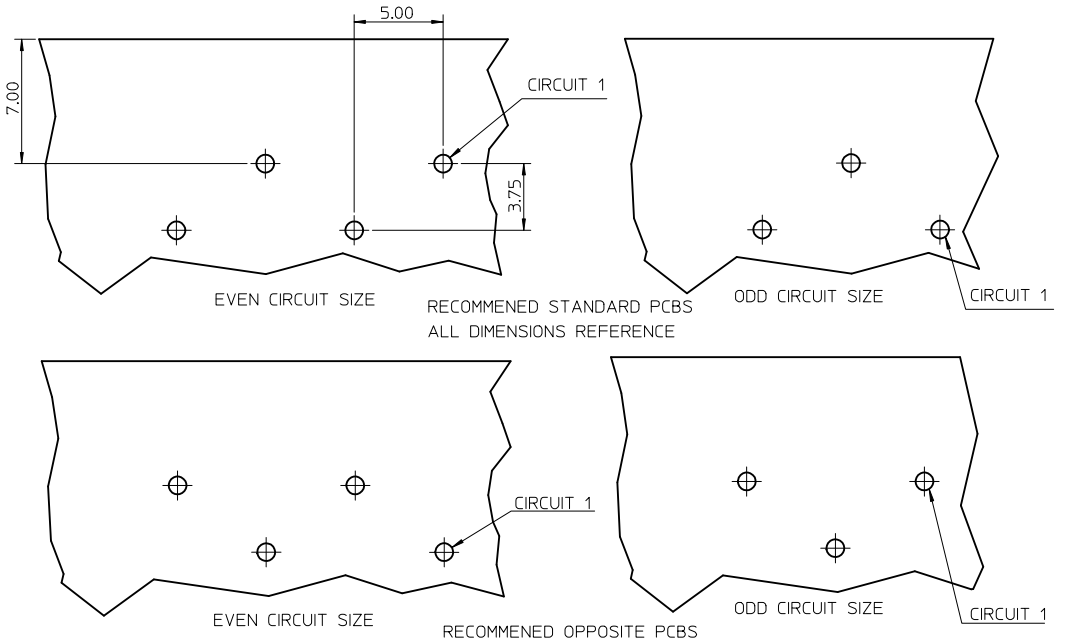
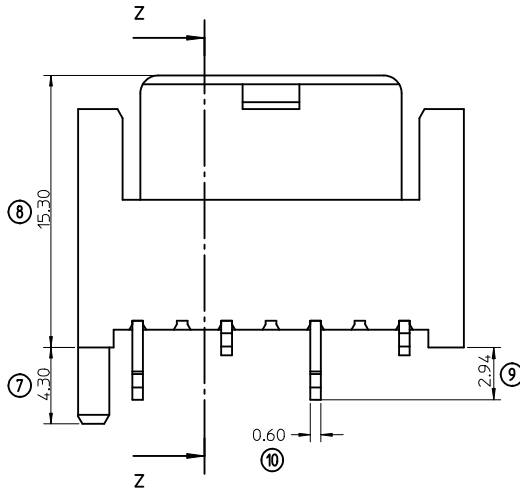
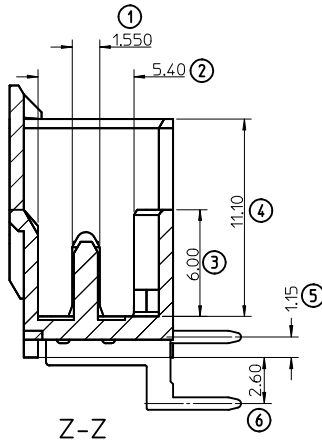
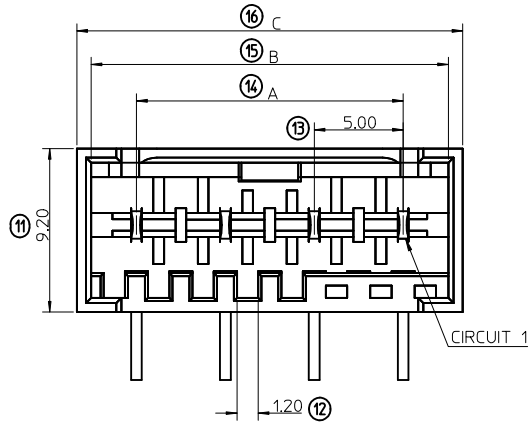


CCT	A	B	C
2	5.0	10.1	11.7
3	10.0	15.1	16.7
4	15.0	20.1	21.7
5	20.0	25.1	26.7
6	25.0	30.1	31.7
7	30.0	35.1	36.7
8	35.0	40.1	41.7



NOTES:

1. MATERIAL: HOUSING - PA66 25% G/F, UL94 V-0  
COLOUR: NATURAL  
TERMINAL - BRASS  
PLATING - 3-7um Sn over 1.27um Min Ni
2. PARTS PACKED AS PER PK-93070-001
3. PRODUCT SPECIFICATION: PS-99039-0040
4. RECOMMENDED PCB THICKNESS: 1.5+/-0.14mm

LAST INSPECTION NUMBER: 16

ADDED HOUSING NO'S EC NO: IFC2012-0779 DRAWN: LICE 2012/04/25 CHKD: APPR: ELOLAN 2012/05/21	QUALITY SYMBOLS ▽=0 ▽=0	GENERAL TOLERANCES (UNLESS SPECIFIED) mm INCH 4 PLACES ± --- ± --- 3 PLACES ± 0.05 ± --- 2 PLACES ± 0.10 ± --- 1 PLACE ± 0.20 ± --- ANGULAR ± 2 °	DIMENSION STYLE MM ONLY	SCALE 5:1	DESIGN UNITS METRIC	THIRD ANGLE PROJECTION	
	DRAWN BY TITOURISH 2008/03/18	DATE 2008/03/18	CHECKED BY BRUTTLE 2008/03/18	DATE 2008/03/18	TITLE RAST 2.5 APPLI-MATE RIGHT ANGLE MALE HEADER 5MM PITCH		
	APPROVED BY BMAGUIRE 2011/10/05	DATE 2011/10/05	MATERIAL NO. SEE SHEET 2			DOCUMENT NO. SD-93073-001	SHEET NO. 1 OF 2
	DRAFT WHERE APPLICABLE MUST REMAIN WITHIN DIMENSIONS						THIS DRAWING CONTAINS INFORMATION THAT IS PROPRIETARY TO MOLEX INCORPORATED AND SHOULD NOT BE USED WITHOUT WRITTEN PERMISSION

## 2 CIRCUIT

MOLEX PART NO.	HOUSING PART NO.	BLOCKED POSITION KEYS	TERMINAL VOID POSITION	CONFIGURATION	LATCH	CIRCUIT 1 LOCATION
93073-0001	91698-0001	NONE	CCT 2		YES	STANDARD
93073-0002	91698-0006	d	CCT 2		YES	STANDARD
93073-0003	91698-0004	b	CCT 2		YES	STANDARD
93073-0004	91698-0007	b d	CCT 2		YES	STANDARD
93073-0005	91698-0008	a c	CCT 2		YES	STANDARD
93073-0006	91698-0002	a d	CCT 2		YES	STANDARD
93073-0007	91698-0003	a	CCT 2		YES	STANDARD
93073-0008	91698-0009	a b	CCT 2		YES	STANDARD
93073-0009	91698-0010	b c	CCT 2		YES	STANDARD
93073-0010	91698-0011	c d	CCT 2		YES	STANDARD
93073-0011	91698-0012	a b c	CCT 2		YES	STANDARD
93073-0012	91698-0016	a c d	CCT 2		YES	STANDARD
93073-0013	91698-0014	b c d	CCT 2		YES	STANDARD
93073-0014	91698-0015	ALL	CCT 2		YES	STANDARD
93073-0015	91698-0017	a	CCT 2		YES	STANDARD RED

## 3 CIRCUIT

MOLEX PART NO.	HOUSING PART NO.	BLOCKED POSITION KEYS	TERMINAL VOID POSITION	CONFIGURATION	LATCH	CIRCUIT 1 LOCATION
93073-1001	91698-1001	NONE	CCT 2, 4		YES	STANDARD
93073-1002	91698-1010	a c d e	CCT 2, 4		YES	STANDARD
93073-1003	91698-1011	b c d e	CCT 2, 4		YES	STANDARD
93073-1004	91698-1012	c	CCT 2, 4		YES	STANDARD
93073-1005	91698-1013	d e f	CCT 2, 4		YES	STANDARD

## 4 CIRCUIT

MOLEX PART NO.	HOUSING PART NO.	BLOCKED POSITION KEYS	TERMINAL VOID POSITION	CONFIGURATION	LATCH	CIRCUIT 1 LOCATION
93073-2001	91698-2001	NONE	CCT 2, 4, 6		YES	STANDARD
93073-2002	91698-2011	b c d e f h	CCT 2, 4, 6		YES	STANDARD
93073-2003	91698-2012	b c d e f g	CCT 2, 4, 6		YES	STANDARD
93073-2004	91698-2013	b c d f	CCT 2, 4, 6		YES	STANDARD

## 5 CIRCUIT

MOLEX PART NO.	HOUSING PART NO.	BLOCKED POSITION KEYS	TERMINAL VOID POSITION	CONFIGURATION	LATCH	CIRCUIT 1 LOCATION
93073-3001	91698-3001	NONE	CCT 2, 4, 6, 8		YES	STANDARD
93073-3002	91698-3005	b c d g h j	CCT 2, 4, 6, 8		YES	STANDARD

## 6 CIRCUIT

MOLEX PART NO.	HOUSING PART NO.	BLOCKED POSITION KEYS	TERMINAL VOID POSITION	CONFIGURATION	LATCH	CIRCUIT 1 LOCATION
93073-4001	91698-4001	NONE	CCT 2, 4, 6, 8, 10		YES	STANDARD

## 7 CIRCUIT

MOLEX PART NO.	HOUSING PART NO.	BLOCKED POSITION KEYS	TERMINAL VOID POSITION	CONFIGURATION	LATCH	CIRCUIT 1 LOCATION
93073-5001	91698-5001	NONE	CCT 2, 4, 6, 8, 10, 12		YES	STANDARD
93073-5002	91698-5003	c d e f g h i j k l m n	CCT 2, 4, 6, 8, 10, 12		YES	STANDARD

## 8 CIRCUIT

MOLEX PART NO.	HOUSING PART NO.	BLOCKED POSITION KEYS	TERMINAL VOID POSITION	CONFIGURATION	LATCH	CIRCUIT 1 LOCATION
93073-6001	91698-6001	NONE	CCT 2, 4, 6, 8, 10, 12, 14		YES	STANDARD

<b>SEE SHEET 1</b> EC NO: IPG2012-0779 DRAWN BY: DRW:LRICE CHKD: APPR:EFOLAN 2012/05/21	QUALITY SYMBOLS ▽=0 ▽=0	GENERAL TOLERANCES (UNLESS SPECIFIED) mm    INCH 4 PLACES ± --- ± --- 3 PLACES ± 0.05 ± --- 2 PLACES ± 0.10 ± --- 1 PLACE ± 0.20 ± --- ANGULAR ± 2°	DIMENSION STYLE <b>MM ONLY</b> DRAWN BY: TOURISH    DATE: 2008/03/18 CHECKED BY: BRUTTLE    DATE: 2008/03/18 APPROVED BY: BMAGUIRE    DATE: 2011/10/05	SCALE: 5:1 DESIGN UNITS: METRIC THIRD ANGLE PROJECTION	TITLE: RAST 2.5 APPLI-MATE RIGHT ANGLE MALE HEADER 5MM PITCH	MOLEX INCORPORATED DOCUMENT NO. SD-93073-001 SHEET NO. 2 OF 2
	DRAFT WHERE APPLICABLE MUST REMAIN WITHIN DIMENSIONS		SEE CHARTS		THIS DRAWING CONTAINS INFORMATION THAT IS PROPRIETARY TO MOLEX INCORPORATED AND SHOULD NOT BE USED WITHOUT WRITTEN PERMISSION	