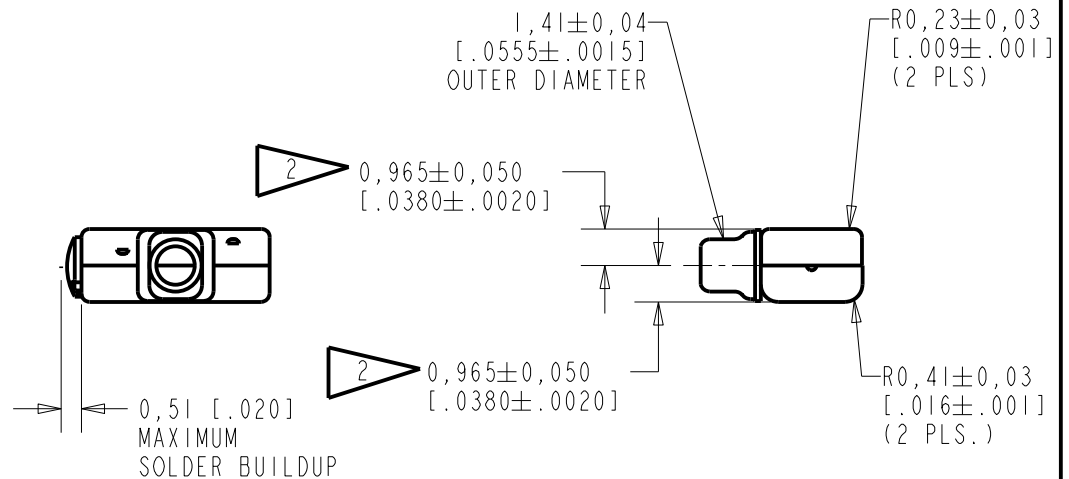
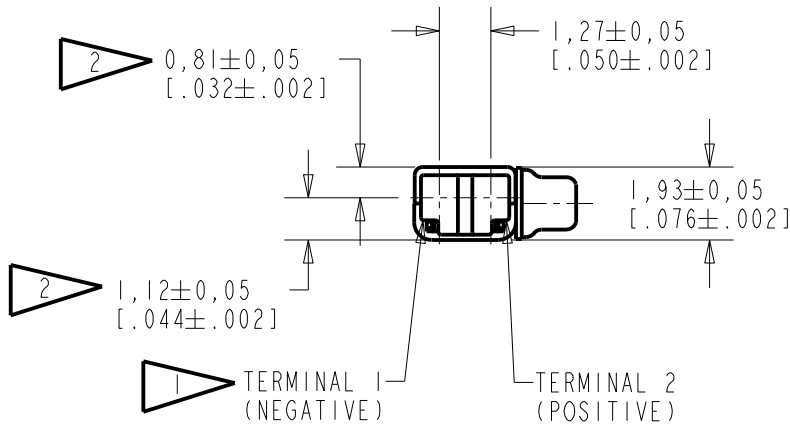
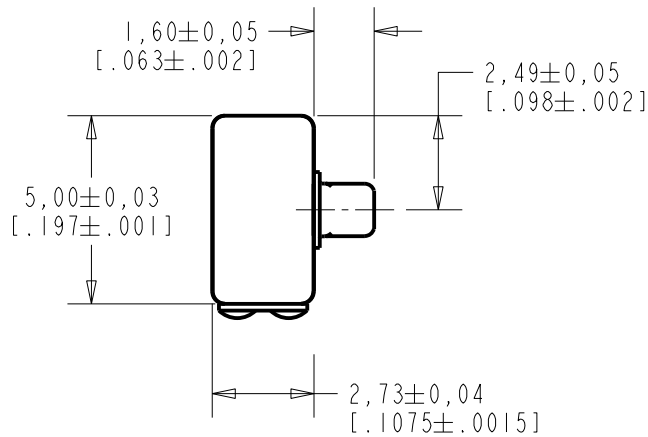


**FK-26433-000**  
SHT 1.1

NOTES:

- 1 A POSITIVE GOING VOLTAGE AT TERMINAL 2, RELATIVE TO TERMINAL 1, CAUSES A DECREASE IN PRESSURE AT THE SOUND OUTLET.
- 2 LOCATED FROM TWO SURFACES FOR CUSTOMER CONVENIENCE. ONLY APPLICABLE FROM ONE SURFACE, NOT TO BE USED TOGETHER.

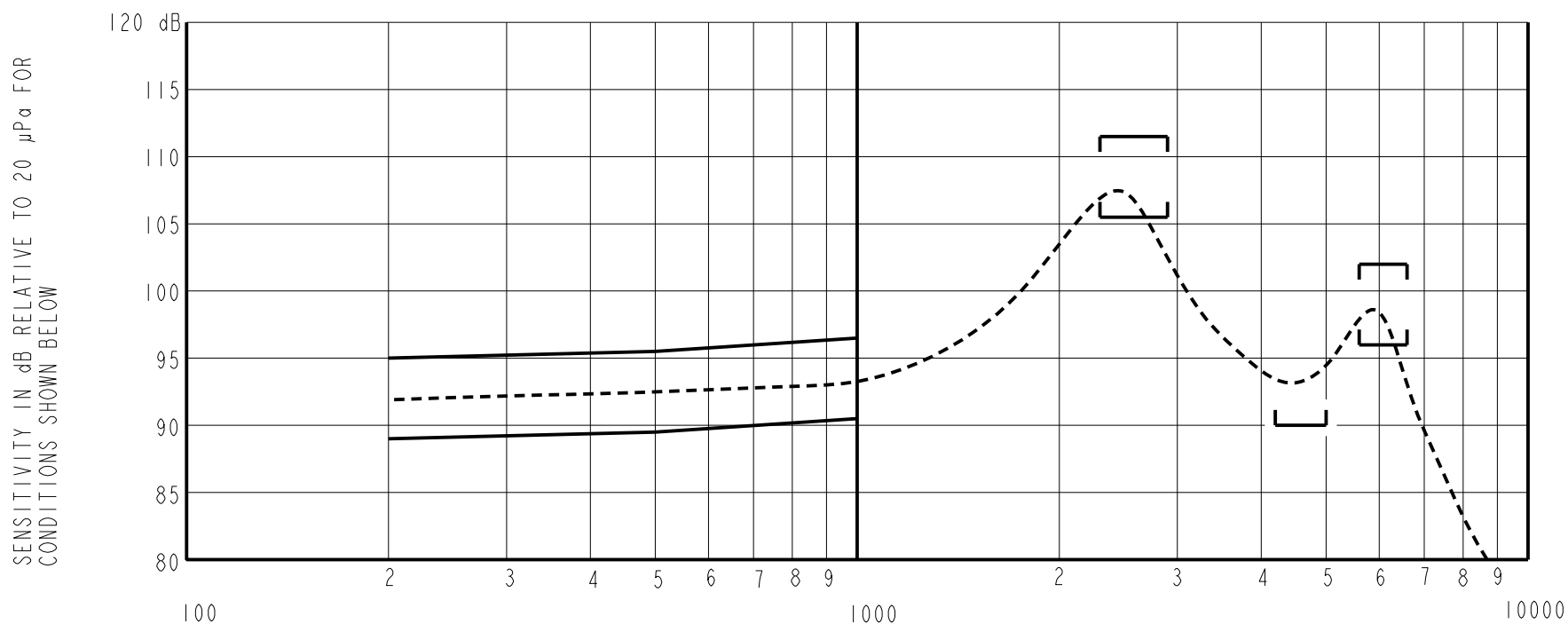


SCALE 2:1  
NOMINAL WEIGHT .11 GRAMS  
DIMENSIONS IN MILLIMETERS [INCHES]

| Revision | C.O. #    | Implementation Date | RELEASE LEVEL | REVISION |
|----------|-----------|---------------------|---------------|----------|
| G        | C10114032 | 11-7-12             | Active        | G        |

|                      |              |
|----------------------|--------------|
| SCALE: 5:1           | DR. BY DATE  |
| DO NOT SCALE DRAWING | MMM 9-6-05   |
| TITLE: RECEIVER      | FK-26433-000 |
| OUTLINE DRAWING      | SHT 1.1      |
|                      | CK. BY DATE  |
|                      | GJP 9-12-05  |
|                      | APP. BY DATE |
|                      | GJP 9-12-05  |

**KNOWLES ELECTRONICS**  
ITASCA, ILLINOIS U.S.A.



**ACOUSTICAL**

SENSITIVITY  
DEVICE PRODUCE THE SPL LISTED BELOW UNDER TEST CONDITIONS IN TABLE 3.  
NOMINAL SENSITIVITY AT 1KHz IS dB RELATIVE TO 20 µPa.

| FREQUENCY (Hz) | MINIMUM | NOMINAL | MAXIMUM |
|----------------|---------|---------|---------|
| 200            | 89.0    | 92.0    | 95.0    |
| 500            | 89.5    | 92.5    | 95.5    |
| 1000           | 90.5    | 93.5    | 96.5    |
| 2300-2900      | 105.5   | 110.5   | 115.5   |
| 4200-5000      | 90.0    | ---     | ---     |
| 5600-6600      | 96.0    | 99.0    | 102.0   |

PORT LOCATION: 3S

TABLE 1

TOTAL HARMONIC DISTORTION  
DEVICE WILL NOT EXCEED TOTAL HARMONIC DISTORTION LEVELS LISTED BELOW.

| FREQUENCY (Hz) | AC DRIVE (mA rms) | DC BIAS (mA) | LIMIT (%) |
|----------------|-------------------|--------------|-----------|
| 800            | 0.39              | 0            | 5         |
| 2400           | 0.78              | 0            | 10        |

TABLE 2

**TEST CONDITIONS**

|                        |   |
|------------------------|---|
| NOMINAL SOURCE VOLTAGE | 0.39 mA rms, 0 mA DC BIAS                                       |
| SOURCE IMPEDANCE       | <1 Ohm  |
| TUBING                 | 10mm [.394"] LONG, 1mm [.039"] I.D.                             |
| COUPLER CAVITY         | 2 CM <sup>3</sup> , SIMULATED ANSI S3.7 TYPE HA-3 (IEC 60318-5) |

TABLE 3

**ELECTRICAL**

|                    |                |
|--------------------|----------------|
| DC RESISTANCE      | 580 Ohms ± 10% |
| IMPEDANCE @ 500 Hz | 690 Ohms ± 15% |
| IMPEDANCE @ 1kHz   | 940 Ohms ± 15% |

TABLE 4

ISOLATION: CASE WILL BE ELECTRICALLY ISOLATED FROM THE COIL CIRCUIT.

| Revision   | C.O. #    | Implementation Date | RELEASE LEVEL       | REVISION                    |
|--|-----------|---------------------|---------------------|-----------------------------|
|  |           |                     | <b>Active</b>       | <b>G</b>                    |
| G  | CI0114032 | 11-7-12             |                     |                             |
| WHEN TEST LIMITS ARE USED TO ESTABLISH INCOMING INSPECTION ACCEPTANCE/REJECTION CRITERIA, CORRELATION OF TEST EQUIPMENT WITH KNOWLES IS ALSO REQUIRED FOR ELIMINATION OF EQUIPMENT AND TEST METHOD VARIATION |           |                     |                     |                             |
| TITLE: <b>RECEIVER</b>   |           |                     | <b>FK-26433-000</b> | DR. BY DATE<br>MMM 9-6-05   |
| PERFORMANCE SPECIFICATION  |           |                     | <b>SHT 2.1</b>      | CK. BY DATE<br>GJP 9-12-05  |
|  |           |                     |                     | APP. BY DATE<br>GJP 9-12-05 |

**KNOWLES ELECTRONICS**  
ITASCA, ILLINOIS U.S.A.