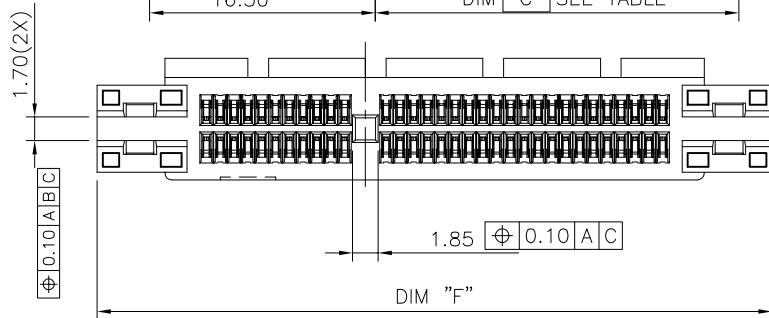
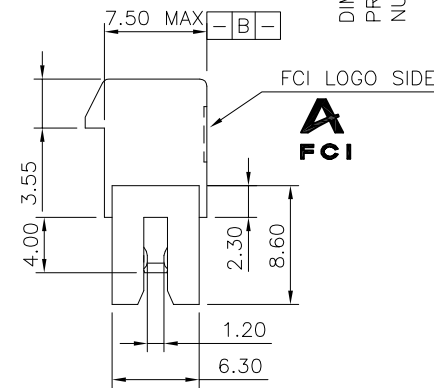
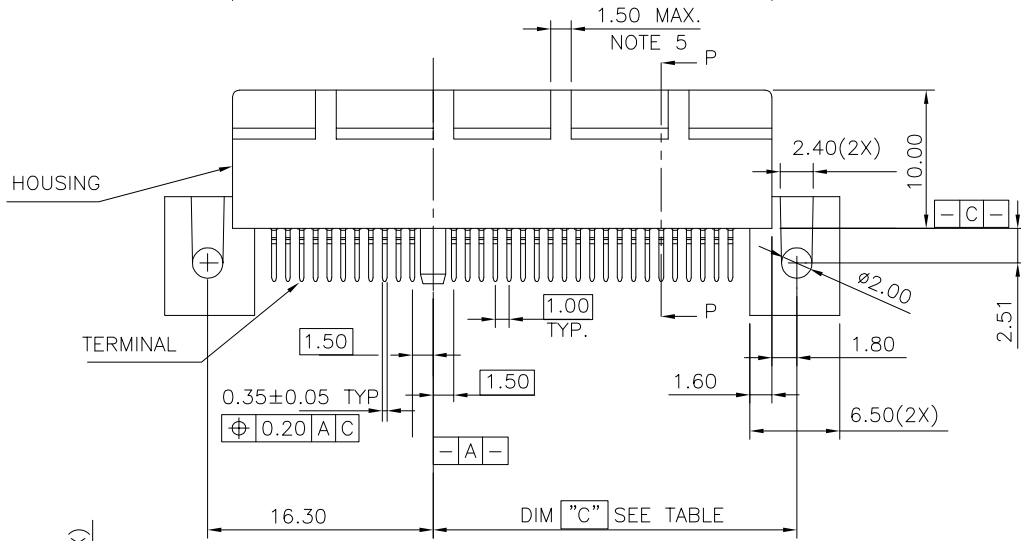
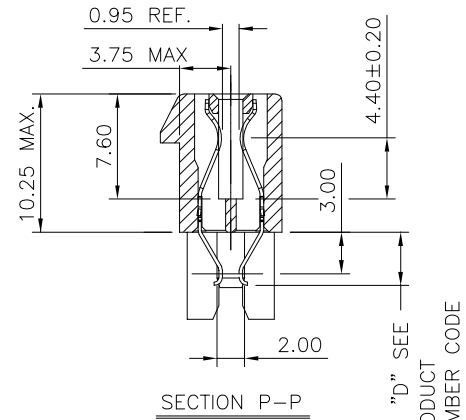
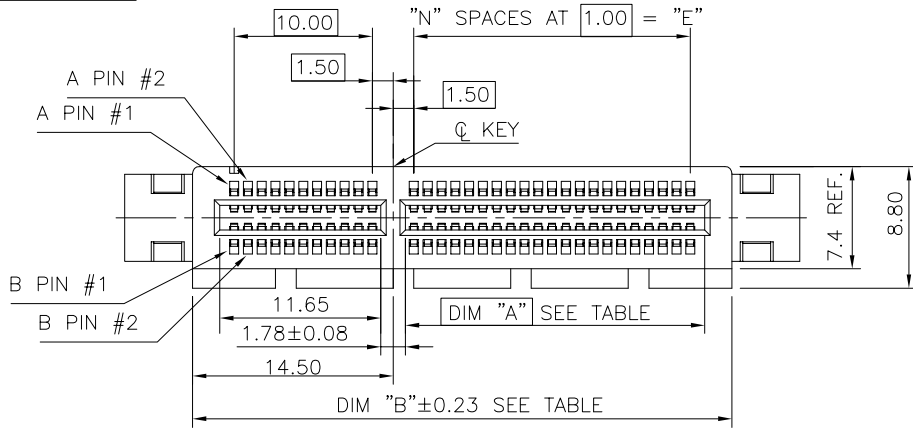
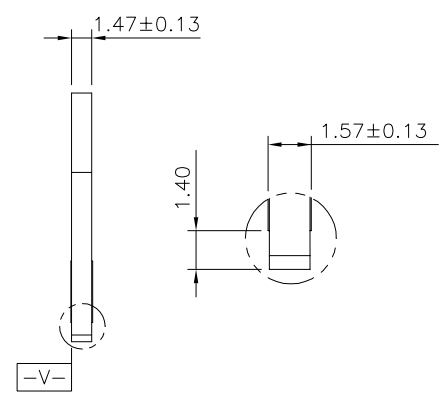
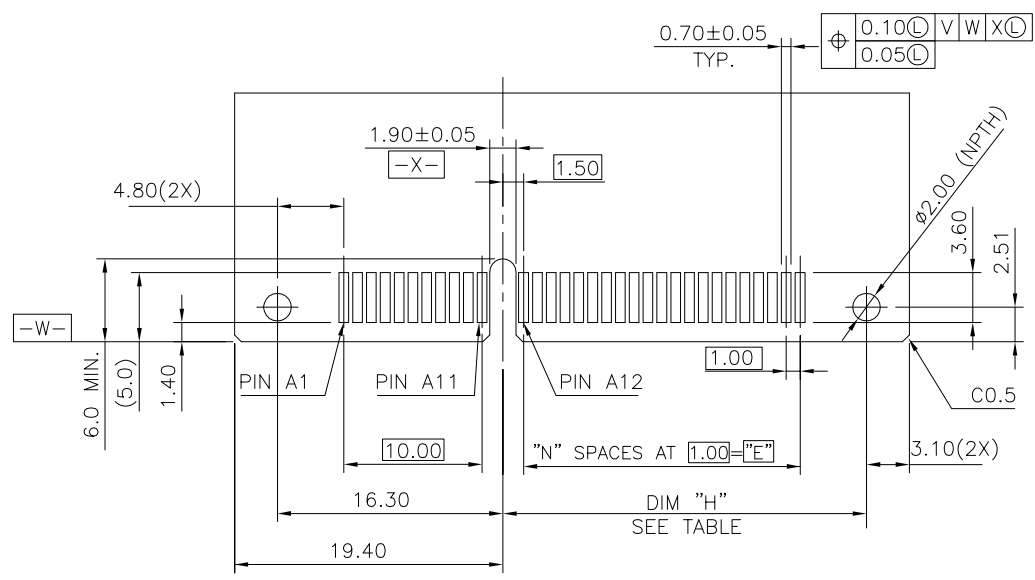


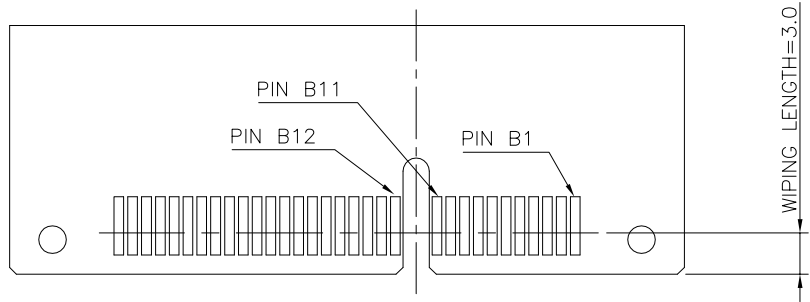
PRODUCT NO.
10025026



mat'l. code		-		surface		✓ tolerance ASME_Y14.5		projection		product family	
lfr		ecn no		dr		date		tolerances unless otherwise specified		PCI_EXPRESS	
F		T06-0179		M		W 10/24/06		angles		title	
G		T06-0209		M		W 12/08/06		.02±0.30		PCI_EXPRESS_CARD_EDGE_GEN3	
H		T10-0068		J		H 5/26/10		.00±0.20		STRADDLE_MOUNT_ASS'Y	
J		DG-008880		H		T 12/12/11		±2'		scale N/A	
K		DG-23735		LZH		04/05/16		.000±0.10		dwg no	
L		DG-24598		LZH		07/28/16		appd		sheet 1 of 7 size	
								PM_ZHENG		10025026	
										CUSTOMER Drawing	
sheet index		revision sheet		L		7					



SCALE 2:1



RECOMMEND OF PCB DIMENSIONS

#	POS REF.	N	DIM "H"	DIM "E"
36		6	12.30	6.00
64		20	26.30	20.00
98		37	43.30	37.00
164		70	76.30	70.00

mat'l. code		-		surface		- ✓		tolerance		ASME_Y14.5		projection		product family		PCI_EXPRESS	
lfr		ecn no		dr		date		tolerances unless otherwise specified		MM		title		PCI_EXPRESS_CARD_EDGE_GEN3		5	
								angles		.0±.020		scale N/A		STRADDLE_MOUNT_ASS'Y			
								±2'		.00±.013				dwg no		sheet 2 of 7 size	
				dr		ZHENHUA_LIU		2016-03-25		.000±.005		Amphenol FCI		10025026		A4	
				enfr		ZHENHUA_LIU		2016-03-25						type		CUSTOMER Drawing	
				chr		STONE_LI		2016-03-25									
				appd		PM_ZHENG		2016-03-25									
sheet index		revision sheet		L		7											

NOTES:

- 1.MATERIAL: RATED.
HOUSING: HIGH TEMPERATURE NYLON, GLASS FILLED UL94V-0
TERMINAL: COPPER ALLOY
PLATING: SEE PRODUCT NUMBER CODE
METAL BOARD LOCKS: COPPER ALLOY
FINISH: 100u" TIN OVER 50u" NICKEL UNDERPLATE

2.PRODUCT SPECIFICATION: GS-12-233

- ③NO TIE BAR PERMITTED FROM CARD EDGE TO LEADING EDGE OF PAD FOR PINS A1 AND PIN NUMBERS "F".
- ④CHAMFER EDGES MUST BE FREE OF CUTTING BURRS.
- ⑤FREQUENCY & LOCATION AT SUPPLIER DISCRETION. RIDGE MAY BE CONTINUOUS WITH NO BREAKS.

6.RoHS COMPATIBLE PRODUCT SPECIFICATIONS

- a - PLATING:
 - "LF" MEANS THE PRODUCT IS LEAD-FREE
- b - MANUFACTURING PROCESS COMPATIBILITY
 - THE HOUSING WILL WITHSTAND EXPOSURE TO 260°C±5°C SOLDER BATH TEMPERATURE FOR 5 SECONDS IN A REFLOW SOLDER APPLICATION.

CONNECTOR	# POS	REF.	N	DIM "A"	DIM "B"	DIM "C"	"E"	"F"
1 PORT	36		6	7.65	25.00	12.30	6.00	34.8
4 PORT	64		20	21.65	39.00	26.30	20.00	48.8
8 PORT	98		37	38.65	56.00	43.30	37.00	65.8
16 PORT	164		70	71.65	89.00	76.30	70.00	98.8

PRODUCT NUMBER CODE

10025026 -x 0 x 0 x T □ □

- HOUSING COLOR OPTIONS**
 - 0-NATURAL, HALOGEN
 - 1-BLACK, HALOGEN
 - △ 2-NATURAL, HALOGEN FREE
 - 3-BLACK, HALOGEN FREE
- RESERVE**
- TERMINAL PLATING OPTIONS**
 - 0-50u" Ni UNDERPLATE
30u" Au CONTACT AREA
100u" TIN TAIL AREA ----- COMPATIBLE RoHS
 - 1-50u" Ni UNDERPLATE
15u" Au CONTACT AREA
100u" TIN TAIL AREA ----- COMPATIBLE RoHS
 - 2-50u" Ni UNDERPLATE
GOLD FLASH CONTACT AREA
100u" TIN TAIL AREA ----- COMPATIBLE RoHS
 - 3-50u" Ni UNDERPLATE
30u" Au CONTACT AREA
100u" TIN/LEAD TAIL AREA ----- INCOMPLIANT RoHS
 - 4-50u" Ni UNDERPLATE
15u" Au CONTACT AREA
100u" TIN/LEAD TAIL AREA ----- INCOMPLIANT RoHS
 - 5-50u" Ni UNDERPLATE
GOLD FLASH CONTACT AREA
100u" TIN/LEAD TAIL AREA ----- INCOMPLIANT RoHS

PACKAGING OPTIONS

- T: TRAY PACKAGING(IN GENERAL VERTICAL DIRECTION)
- C: TAPE & REEL WITH INSERT CAP (FOR 98P ONLY)
- H: TRAY PACKAGING(IN SPECIAL HORIZONTAL DIRECTION FOR 164P ONLY)
- P: TRAY PACKAGING WITH INSERT CAP
- △ S: TRAY PACKAGING WITH INSERT CAP(IN SPECIAL HORIZONTAL DIRECTION)

TAIL LENGTH OPTIONS

DIM "D"	PCB THICKNESS
3.85 +0.25 -0.13	1.56

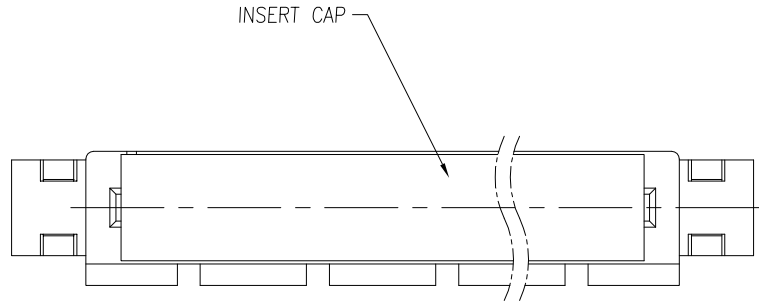
LEAD FREE OPTIEON

"LF" FOR TERMINAL PLATING OPTION 0,1,2

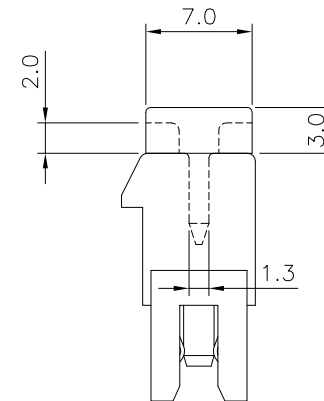
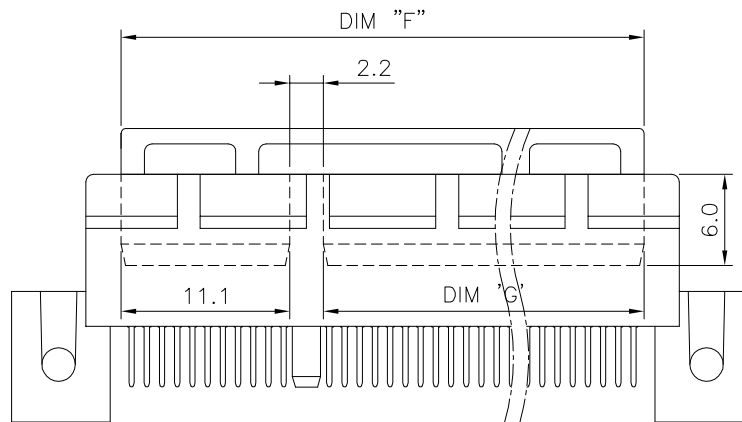
mat'l. code		surface		tolerance		projection		product family	
-		-		ASME_Y14.5				PCI_EXPRESS	
lfr		ecn no		dr		date		title	
								PCI_EXPRESS_CARD_EDGE_GEN3 STRADDLE_MOUNT_ASS'Y	
				angles				dwg no	
				±2'		scale N/A		sheet 4 of 7	
				dr		2016-03-25		size	
				enfr		2016-03-25		A4	
				chr		2016-03-25		10025026	
				appd		2016-03-25		type	
				PM_ZHENG				CUSTOMER Drawing	
sheet index		revision sheet		L		7			

NOTES:

1. MATERIAL:
INSERT CAP: THERMOPLASTIC UL94V-0; BLACK COLOR.



DIMENSIONS		
POSITION	F	G
36	20.4	7.1
64	34.4	21.1
98	51.4	38.1
164	84.4	71.1



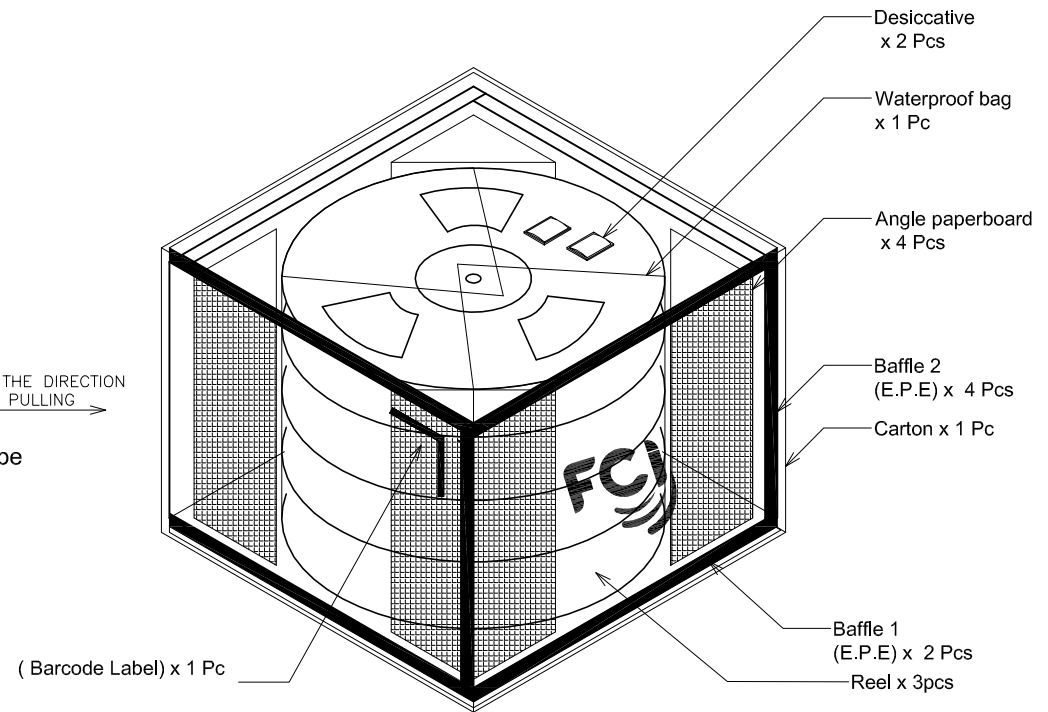
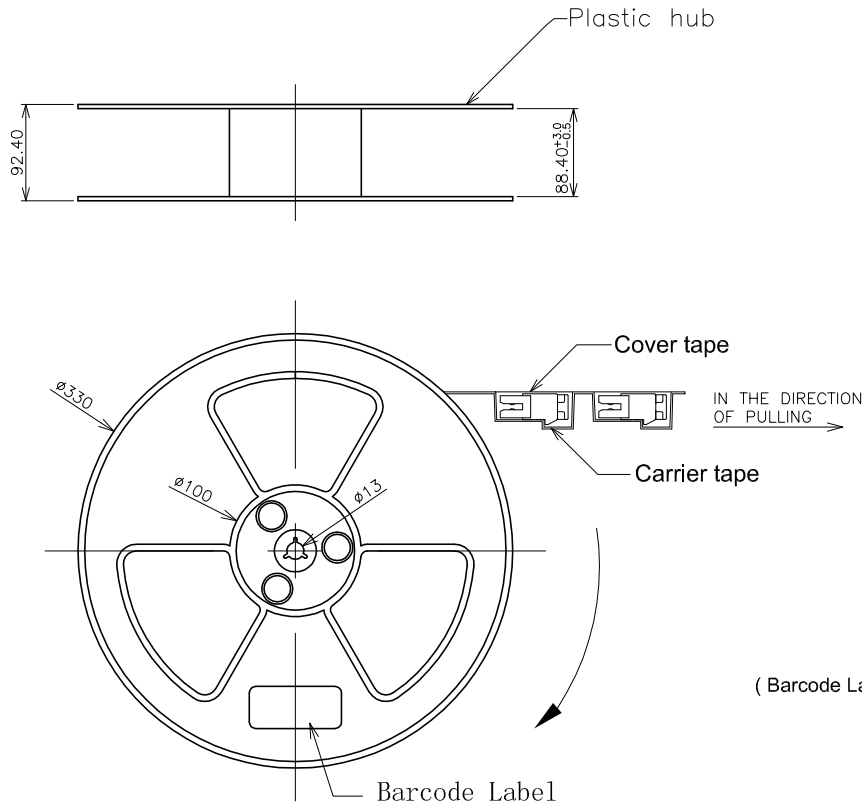
mat'l. code		-		surface	-	tolerance	ASME_Y14.5	projection	product family	PCI_EXPRESS		
ltr	ecn no	dr	date	tolerances unless otherwise specified				MM	title			
				angles	linear	±2'	scale N/A		PCI_EXPRESS_CARD_EDGE_GEN3 STRADDLE_MOUNT_ASS'Y			
				dr	ZHENHUA_LIU	2016-03-25		Amphenol FCi	dwg no		sheet 5 of 7	
				enfr	ZHENHUA_LIU	2016-03-25			10025026		size	A4
				chr	STONE_LI	2016-03-25			type			CUSTOMER Drawing
				appd	PM_ZHENG	2016-03-25						
sheet index	revision sheet	L	7									

NOTE:

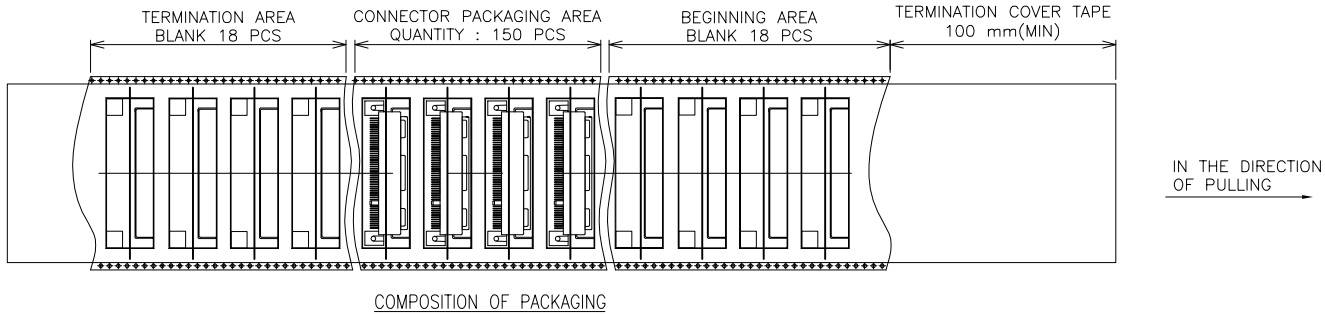
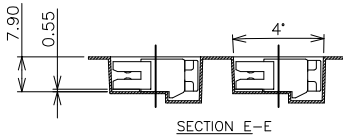
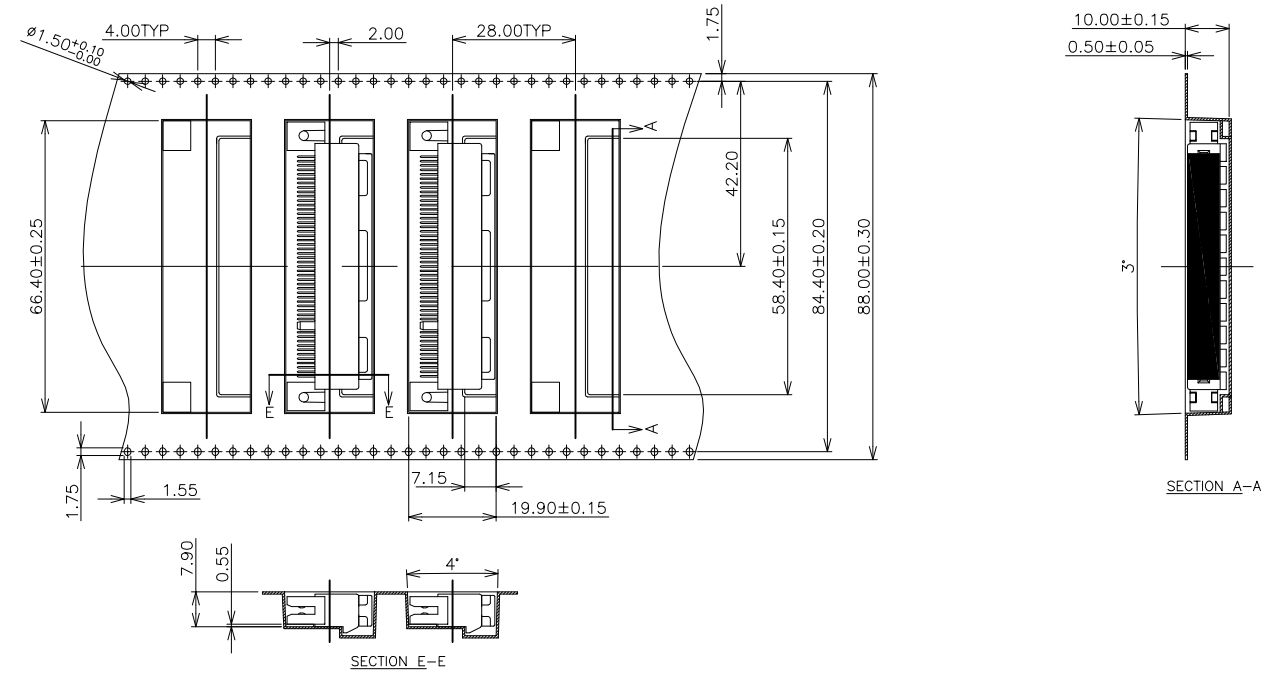
1. REEL MATERIAL : PS, BLACK
2. CARRIER MATERIAL : PS
3. COVER TAPE MATERIAL : PS
4. COVER TAPE REEL STRENGTH : 13"
5. QUANTITY : 150 PCS/REEL
6. Carton : 380(L) * 380(W) * 300(H) mm

Part No	
10025026-XXXXC(LF)	

NO. OF CONTACTS	98
REEL/CARTON	3
PCS/REEL	150
QUANTITY(PCS)	450



mat'l. code	-	surface	-	tolerance	ASME_Y14.5	projection		product family	PCI_EXPRESS	
lfr	ecn no	dr	date	tolerances unless otherwise specified		MM	scale N/A	title		
				angles	.02±0.30			PCI_EXPRESS_CARD_EDGE_GEN3		
				±2'	.00±0.20			STRADDLE_MOUNT_ASS'Y		
					.000±0.10			dwg no		
		dr	ZHENHUA_LIU	2016-03-25				sheet 6 of 7	size	
		enfr	ZHENHUA_LIU	2016-03-25				10025026	A4	
		chr	STONE_LI	2016-03-25				type		
		appd	PM_ZHENG	2016-03-25				CUSTOMER Drawing		
sheet index	revision	L								
	sheet	7								



mat'l. code		-		surface	-	tolerance	ASME_Y14.5	projection	⊕	product family	PCI_EXPRESS	
lfr	ecn no	dr	date	tolerances unless otherwise specified				MM	title	PCI_EXPRESS_CARD_EDGE_GEN3 STRADDLE_MOUNT_ASS'Y		
				angles	±2'	linear	.02±0.30 .00±0.20 .000±0.10	scale	N/A	dwg no	10025026	
		dr	ZHENHUA_LIU	2016-03-25	enfr	ZHENHUA_LIU	2016-03-25			sheet 7 of 7	size	
		chr	STONE_LI	2016-03-25	appd	PM_ZHENG	2016-03-25			A4		
sheet index	revision	L	7	type								CUSTOMER Drawing