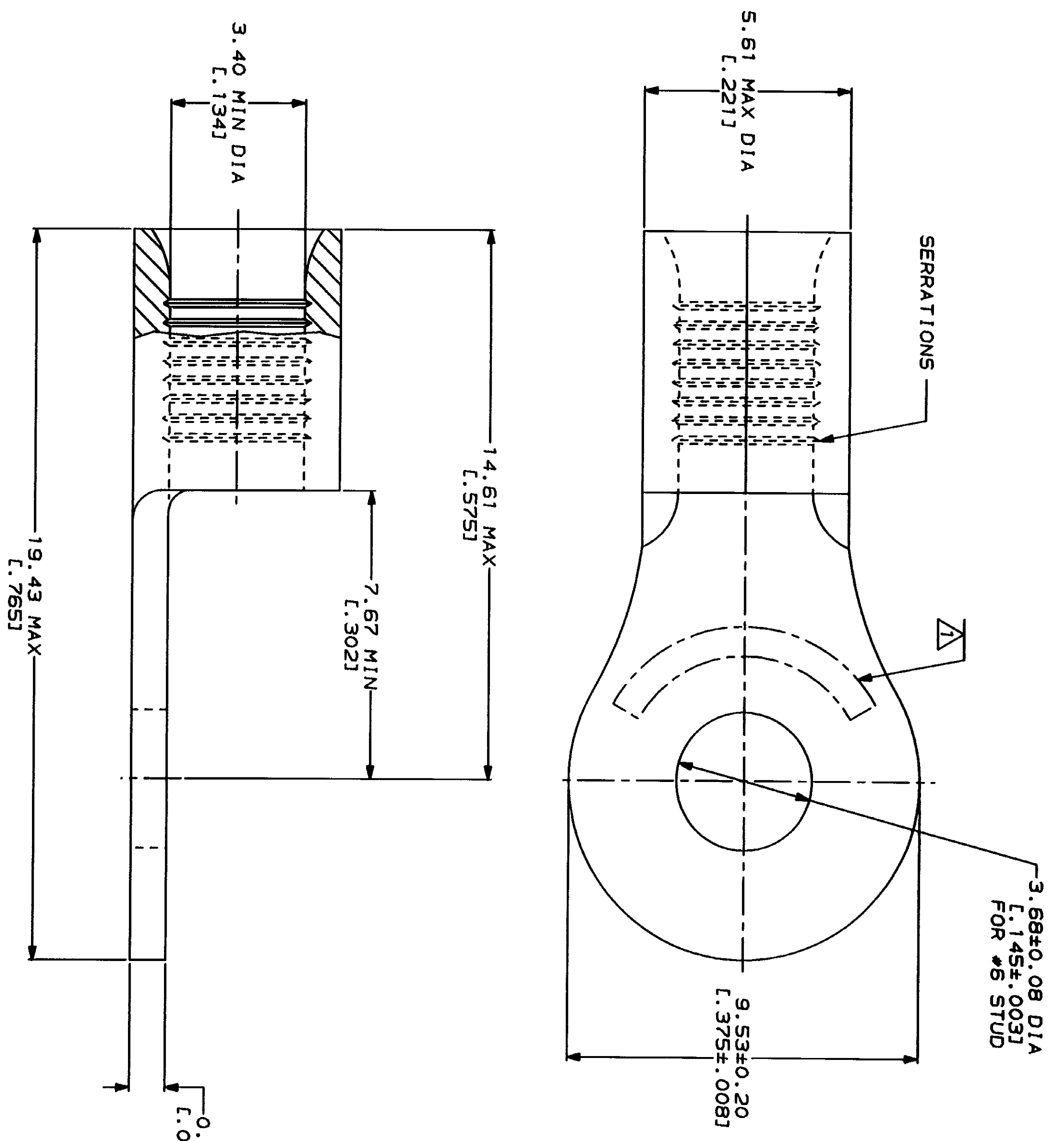


LOC	DIST	ZONE	LTR	DESCRIPTION	DATE	APPD
G	14			REVISED PER 0720-0230-93	2/25/94	DUP

**METRIOR**  
 DIMENSIONS LISTED IN MM [ INCHES ]

<b>AMP</b> WIRE RANGE 12-10 AWG STRANDED	<b>UL</b> E13288 Listed
<b>LR7189</b> Certified	MILITARY P/N AND CLASS
NOT CERTIFIED	NOT APPLICABLE

△ STAMP AMP 12-10\* APPROX AS SHOWN



AMP INCORPORATED  
 CUSTOMER SERVICE SYSTEMS

FOR ADDITIONAL  
 PRODUCT INFORMATION OR  
 COPIES OF DRAWINGS  
 AND TECHNICAL DOCUMENTS  
 1-800-522-6752

FOR APPLICATION  
 TOOLING ASSISTANCE CENTER  
 1-800-722-1111

FOR ORDER ENTRY  
 1-800-526-5142

MAX RECOMMENDED OPERATING  
 TEMPERATURE:  
 170°C MAX

VOLTAGE RATING:  
 NOT APPLICABLE

WIRE CROSS SECTIONAL AREA RANGE:  
 2.62-6.64mm<sup>2</sup> (5,180-13,100) CIR MILS  
 STRANDED

THIS DRAWING IS A CONTROLLED DOCUMENT FOR  
 AMP INCORPORATED. IT IS SUBJECT TO CHANGE  
 WITHOUT NOTICE. CONTACT YOUR SALES  
 REPRESENTATIVE FOR THE LATEST REVISION.

DO NOT SCALE PRINT.  
 UNLESS SPECIFIED  
 DIMENSIONS IN MILLIMETERS  
 TOLERANCES ON:  
 2 PLG DEC ± .1  
 3 PLG DEC ± .1  
 ANGLES ± .5

MATERIAL:  
 COPPER PER  
 ASTM B-152  
 ANNEALED

FINISH:  
 TIN PLATE  
 0.00254(.000100) MIN  
 THK PER MIL-T-10727

DR 2-9-93  
 TA BRINKMAN

CHK 2-9-93  
 DA PATTERSON

APPD 2-9-93  
 DE MILLER

APPD 2-9-93  
 JL NECKLEY

PRODUCT SPEC

APPLICATION SPEC

WEIGHT

**AMP**  
 AMP Incorporated  
 Harrisburg, PA 17125-3608

TERMINAL, RING TONGUE,  
 BUDGET

SIZE CAGE CODE DRAWING NO  
 00779 31112

31112  
 PART NO