

AMPHENOL PART NUMBER CONFIGURATION
U98 - B11 X - X0XX

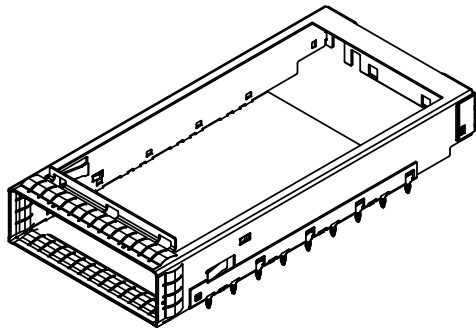
INSULATING TAPE OPTION
1 = STANDARD (NO INSULATING TAPE)
2 = WITH INSULATING TAPE ON BOTTOM CAGE

PACKAGING
1 = TRAY PACKAGING

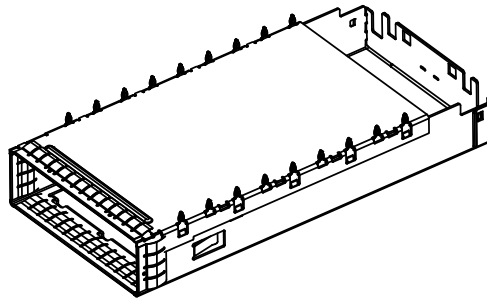
KICKOUT SPRING
A = WITHOUT KICKOUT SPRING
B = WITH KICKOUT SPRING

PLATING OPTION
1 = NICKEL

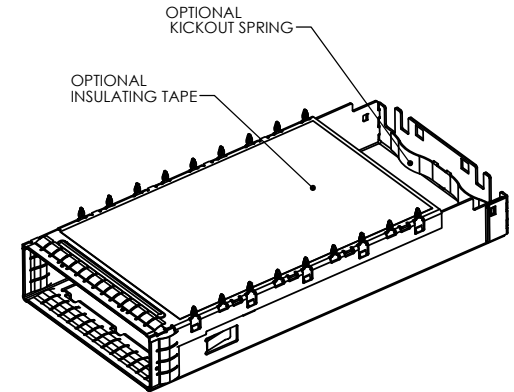
REVISIONS				
REV.	ECN	DESCRIPTION	DATE	APPROVED
C		DIMENSIONS ADDED	JUL28/14	CM
D		EMI SPRING MODIFIED, DIMENSIONS ADDED	OCT06/14	CM



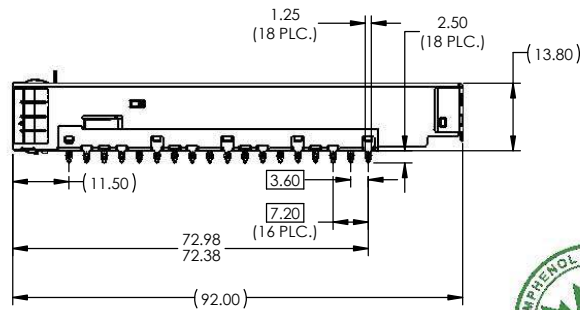
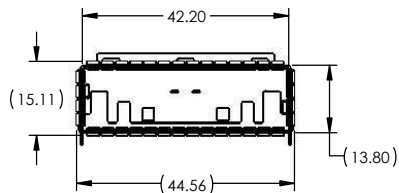
VIEW OF CAGE ASSEMBLY
[P/N U98-B11X-10X1]



BOTTOM VIEW OF CAGE ASSEMBLY
WITHOUT KICKOUT SPRING OR INSULATING TAPE OPTION
[P/N U98-B111-10A1]



BOTTOM VIEW OF CAGE ASSEMBLY
WITH KICKOUT SPRING AND INSULATING TAPE OPTION
[P/N U98-B112-10B1]



NOTES:

- MATERIAL:
CAGE AND EMI SPRINGS MATERIAL: COPPER ALLOY
OPTIONAL KICKOUT SPRING: COPPER ALLOY
OPTIONAL INSULATING TAPE: POLYIMIDE FILM

CAGE PLATING: 3.81µm (100µin) MIN. NICKEL
- CAGE IS INTENDED TO BE COMPLIANT WITH THE CFP2 TRANSCEIVER SPECIFICATION.

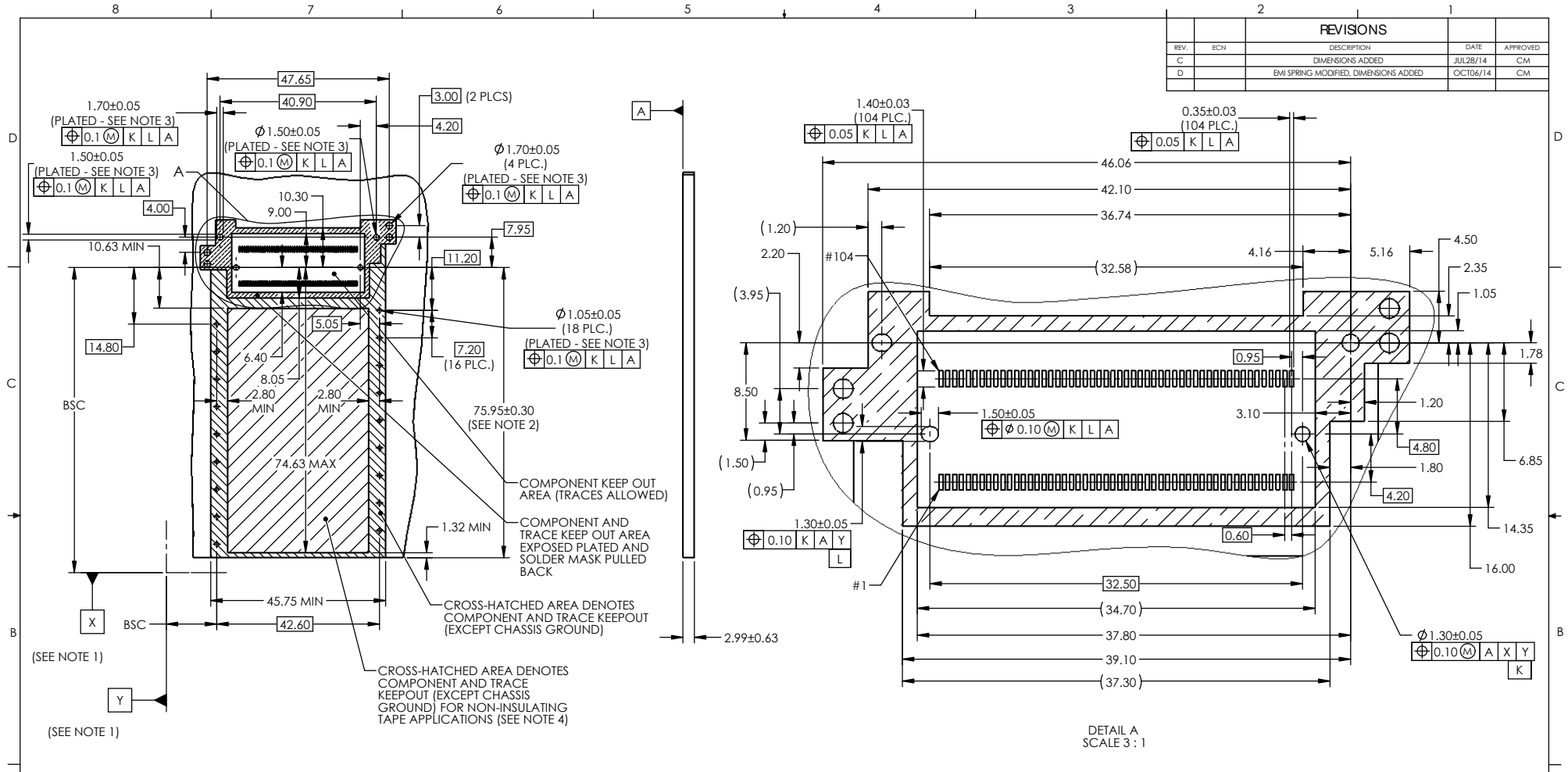


DO NOT SCALE DRAWING

THIS DOCUMENT CONTAINS PROPRIETARY INFORMATION AND SUCH INFORMATION MAY NOT BE DISCLOSED TO OTHERS FOR ANY PURPOSE OR USED FOR MANUFACTURING PURPOSES WITHOUT PERMISSION FROM AMPHENOL CANADA CORP.

UNLESS OTHERWISE SPECIFIED DIMENSIONS ARE IN MILLIMETERS TOLERANCES ARE: DECIMALS ANGLES XX ± 0.15 ± 0.5° X.XX ± 0.10	APPROVALS	DATE	Amphenol High Speed Interconnects	
	DRAWN HISEN X.	SEP02/13	TITLE	
	DESIGNED C.MICHLIK	JUN05/12	CFP2 1 PORT CAGE ASSEMBLY ONLY (PRESS FIT PINS)	
	CHECKED C.MICHLIK	OCT07/13		
MATERIAL AND FINISH	GA APPD			
SEE NOTE 1				
REF.	E APPD		SIZE A3	DWG. NO. P-U98-B11X-X0XX
CODE IDENT. NO. 03554	DWG APPD C.MICHLIK	OCT07/13	SCALE 1:1	PROJECT SHEET 1 OF 3

REVISIONS				
REV.	ECN	DESCRIPTION	DATE	APPROVED
C		DIMENSIONS ADDED	JUL28/14	CM
D		EMI SPRING MODIFIED, DIMENSIONS ADDED	OCT06/14	CM



RECOMMENDED PC BOARD LAYOUT
(COMPONENT SIDE OF BOARD)

DETAIL A
SCALE 3 : 1

NOTES:

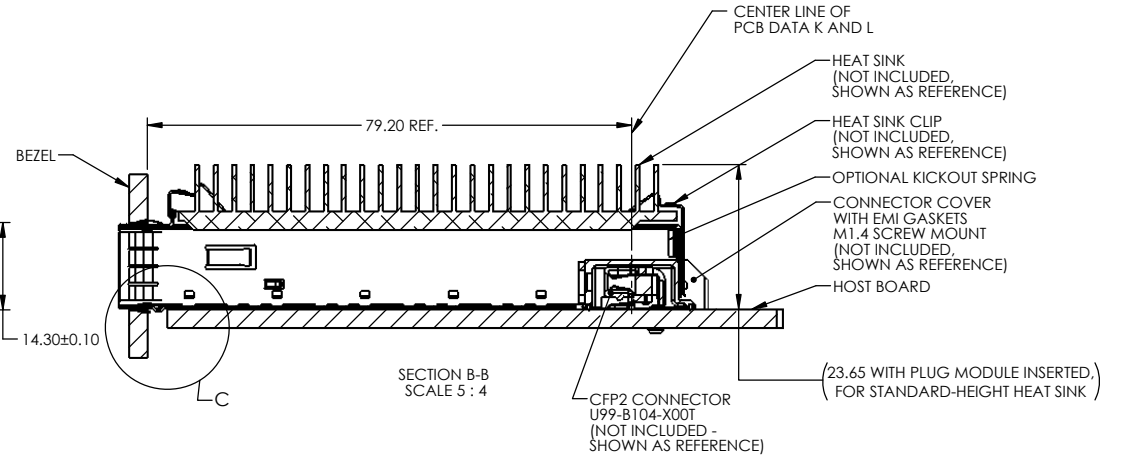
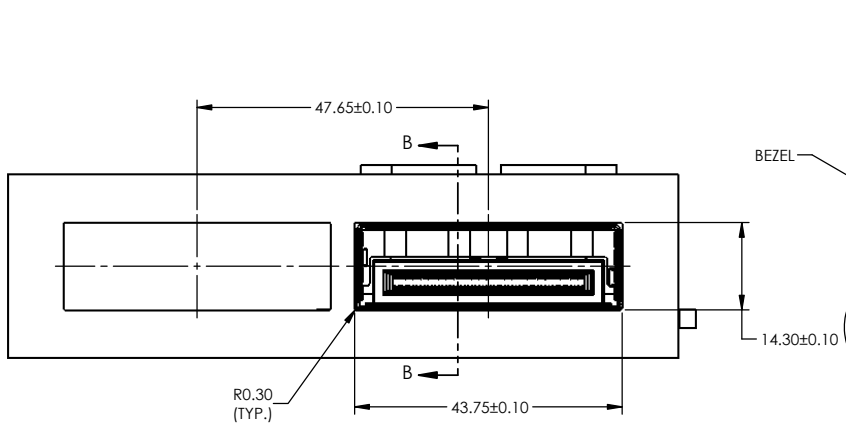
- DATA X AND Y ESTABLISHED BY CUSTOMER'S FIDUCIAL.
- LOCATION OF EDGE OF PCB IS APPLICATION SPECIFIC.
- FINISHED HOLE SIZE.
- COMPONENTS AND TRACES IN INDICATED AREA ARE ONLY ALLOWED FOR APPLICATIONS WITH INSULATING TAPE

DO NOT SCALE DRAWING

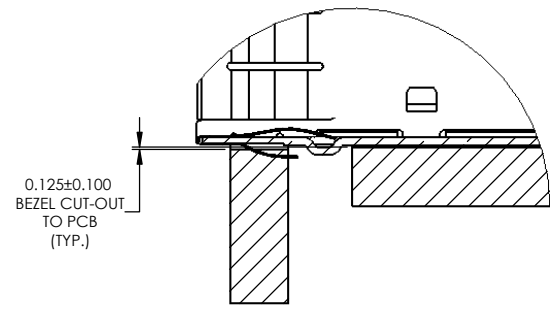
THIS DOCUMENT CONTAINS PROPRIETARY INFORMATION AND SUCH INFORMATION MAY NOT BE DISCLOSED TO OTHERS FOR ANY PURPOSE OR USED FOR MANUFACTURING PURPOSES WITHOUT PERMISSION FROM AMPHENOL CANADA CORP.

UNLESS OTHERWISE SPECIFIED DIMENSIONS ARE IN MILLIMETERS TOLERANCES ARE:		APPROVALS		DATE		Amphenol High Speed Interconnects	
DECIMALS	ANGLES	DRAWN	HISEN X.	SEP02/13	TITLE		
XX ± 0.15	± 0.5°	DESIGNED	C.MICHLIK	JUN05/12	C/P2 1 PORT CAGE ASSEMBLY ONLY (PRESS FIT PINS)		
X.XX ± 0.10		CHECKED	C.MICHLIK	OCT07/13	PROJECT		
MATERIAL AND FINISH		GA APPD	REV. D				
SEE NOTE 1		E APPD	SCALE 1:1				
REF.		DWG APPD	C.MICHLIK	OCT07/13	SIZE A3	DWG. NO. P-U98-B11X-X0XX	SHEET 2 OF 3
CODE IDENT. NO.	03554						

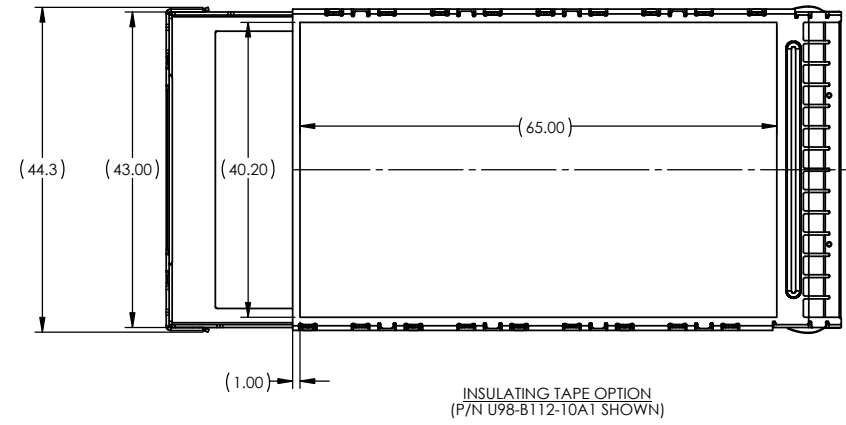
REVISIONS				
REV.	ECN	DESCRIPTION	DATE	APPROVED
C		DIMENSIONS ADDED	JUL28/14	CM
D		EMI SPRING MODIFIED, DIMENSIONS ADDED	OCT06/14	CM



RECOMMENDED SINGLE-SIDED MOUNTING DESIGN



DETAIL C SCALE 4:1



INSULATING TAPE OPTION (P/N U98-B112-10A1 SHOWN)

DO NOT SCALE DRAWING

THIS DOCUMENT CONTAINS PROPRIETARY INFORMATION AND SUCH INFORMATION MAY NOT BE DISCLOSED TO OTHERS FOR ANY PURPOSE OR USED FOR MANUFACTURING PURPOSES WITHOUT PERMISSION FROM AMPHENOL CANADA CORP.

UNLESS OTHERWISE SPECIFIED DIMENSIONS ARE IN MILLIMETERS TOLERANCES ARE:		APPROVALS		DATE	Amphenol High Speed Interconnects		
DECIMALS	ANGLES	DRAWN	HISEN X.	SEP02/13	TITLE		
XX ± 0.15	± 0.5°	DESIGNED	C.MICHLIK	JUN05/12	CFP2 1 PORT CAGE ASSEMBLY ONLY (PRESS FIT PINS)		
X.XX ± 0.10		CHECKED	C.MICHLIK	OCT07/13			
MATERIAL AND FINISH		GA APPD					
SEE NOTE 1		E APPD			SIZE	DWG. NO.	REV.
REF.		E APPD			A3	P-U98-B11X-X0XX	D
CODE IDENT. NO.	03554	DWG APPD	C.MICHLIK	OCT07/13	SCALE	PROJECT	SHEET
					1:1		3 OF 3