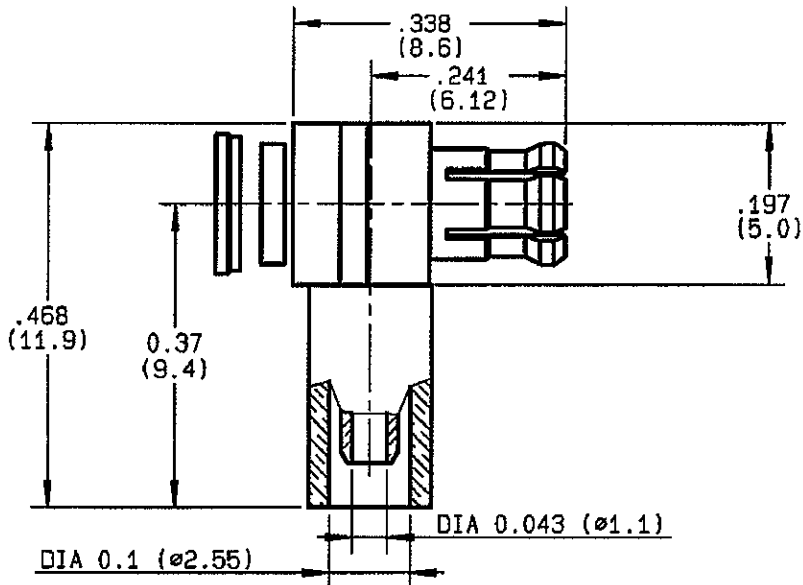


**RIGHT ANGLE PLUG CRIMP TYPE
CABLE 2/50 S**

R113.181.000
SERIES **MCX**



| | |
|---------------------------------|----------------------------------|
| NOMINAL IMPEDANCE | 50 Ω |
| FREQUENCY RANGE | 0-6 GHz |
| TEMPERATURE RATING | -55/+155 °C |
| V.S.W.R | 1.10 + .075 x F(GHz)Maxi |
| RF INSERTION LOSS | 0.5 √F(GHz) dB Maxi |
| VOLTAGE RATING | 170 Veff Maxi |
| DIELECTRIC WITHSTANDING VOLTAGE | 500 Veff Mini |
| INSULATION RESISTANCE | 1000 M ΩMini |
| HERMETIC SEAL | NA Atm.cm ³ /s |
| LEAKAGE (pressurized only) | NA |
| MECHANICAL DURABILITY | 500 Cycles |
| WEIGHT | gr |
| SPECIFICATION | |

CABLES : **KX 21**
RG 178
RG 178 LC
RG 196

OTHERS CHARACTERISTICS

| | |
|----------------------------|---------------------|
| CABLE RETENTION | 32 N Mini |
| CENTER CONTACT RETENTION | |
| Axial force - mating end | 10 N Mini |
| Axial force - opposite end | 10 N Mini |
| Torque | NA cm.N Mini |
| RECOMMENDED TORQUES | |
| Mating | NA cm.N |
| Panel nut | NA cm.N |
| Clamp nut | NA cm.N |

CONNECTOR PARTS:

MATERIALS

FINISH

(all values are given)
in micrometers

| | | |
|----------------|------------------|------------------------|
| BODY | BRASS | GOLD 0.2 OVER NICKEL 2 |
| OUTER CONTACT | BERYLLIUM COPPER | GOLD 0.5 OVER NICKEL 2 |
| CENTER CONTACT | BRASS | GOLD 1.3 OVER NICKEL 2 |
| INSULATOR | PTFE | - |
| GASKET | | - |
| OTHERS PIECES | | |

ISSUE:
0746G

CREATION DATE FILE PART-NUMBER
30/03/1988

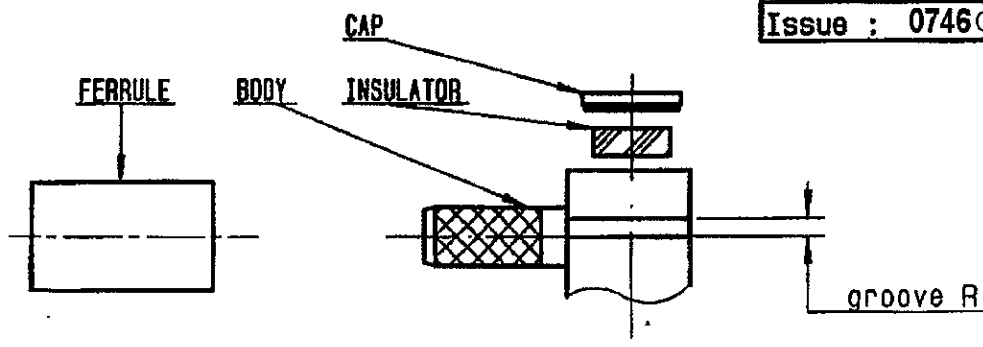


RADIALL®

BAFFERT

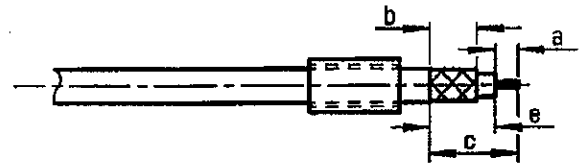
The information given here is subject to change without notice.
Design changes may be in order to improve the product .

Connect to the future



①

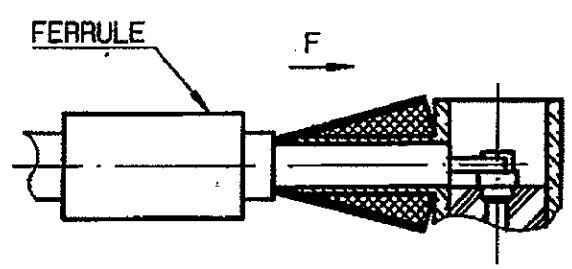
Slide onto the cable the ferrule .
Strip the cable .
Tin cable inner conductor .



| Stripping | a | b | c | d | e |
|-----------|-------|-------|-------|---|-------|
| Inch | 0.079 | 0.197 | 0.374 | 0 | 0.236 |
| mm | 2 | 5 | 9.5 | - | 6 |

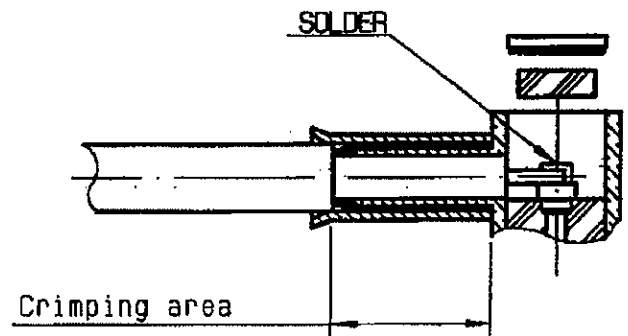
②

Fan the braid .
Push connector body under the braid .
Slide the ferrule on the braid
(in direction F)



③

Crimp the ferrule with crimping tool R282 271 000 (Hex. : .128) or crimping tool R 282 293 000 (M22520/5-01) + dies R 282 235 003 (M22520/5-03)
Solder inner conductor .
Introduce the insulator into the body .
Press fit the cap .



④

Slide mounting tool R282 868 onto the body grooves .
Press fit the cap turning tool handle with adapted wrench .275(AF) (cap in the same plan than square face) .

