

**NOTES:**

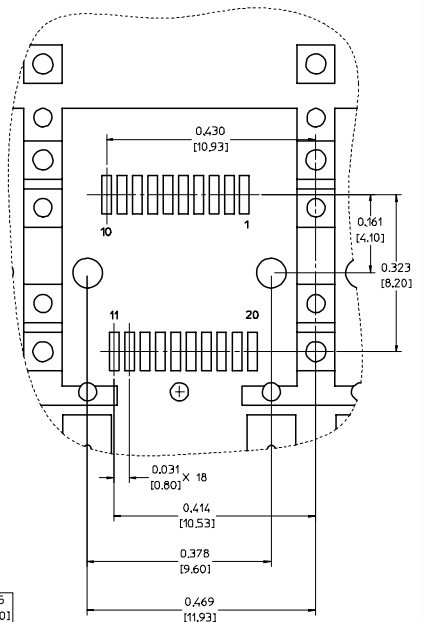
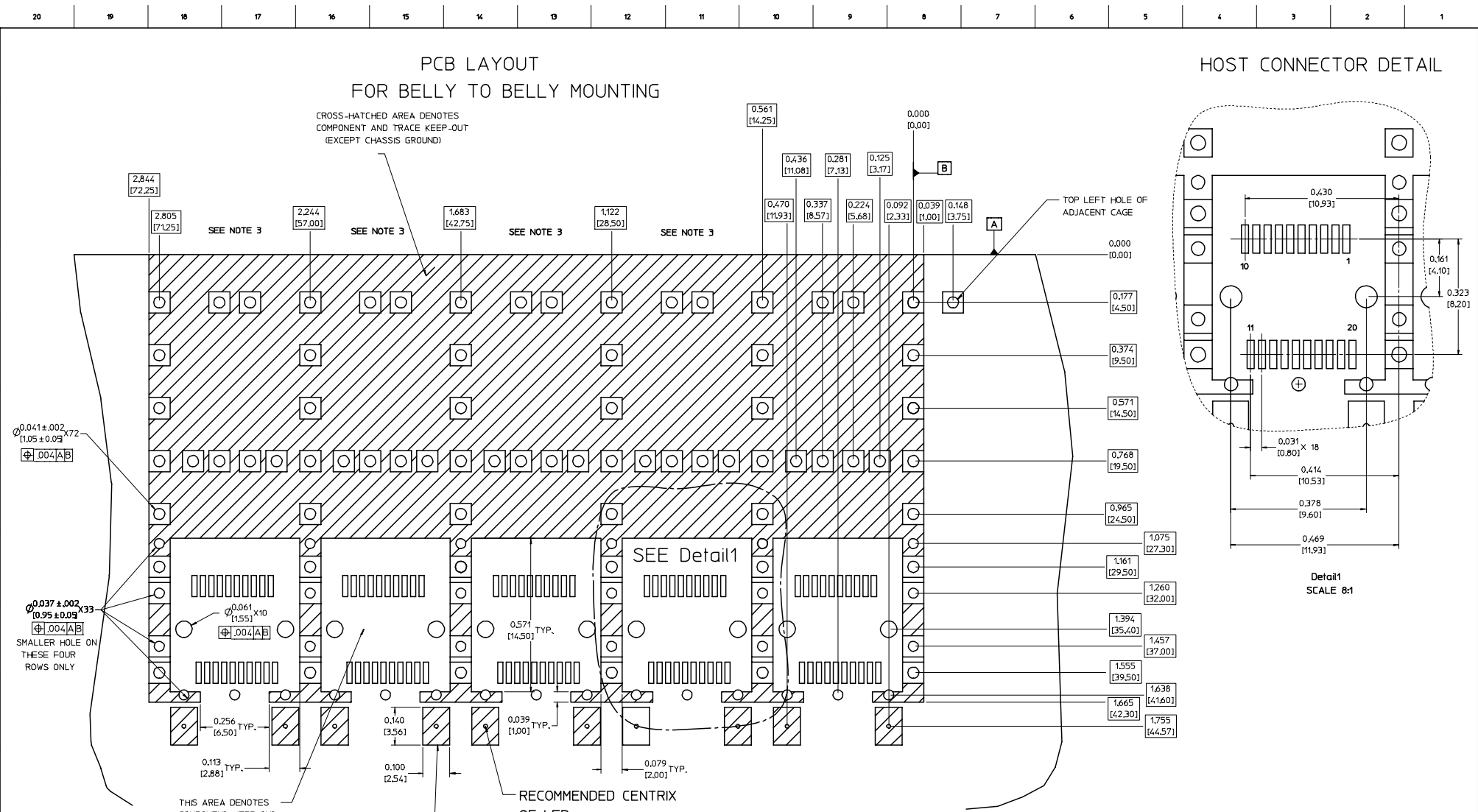
- THIS LIGHT PIPE ASSEMBLY TO BE USED WITH THE FOLLOWING 1X5 SFP CAGE ASSEMBLIES:  
  
747230001 - 1X5 SFP CAGE ASSEMBLY W/ PRESS FIT PINS (REFER TO DOCUMENT SD-74723-001)
- IT IS RECOMMENDED THAT THE CAGE ASSEMBLY BE PRESSED INTO THE PCB PRIOR TO ASSEMBLING THE LIGHT PIPE ASSEMBLY.
- LED'S TO HAVE A MAXIMUM HEIGHT OF 1.4mm AND A MINIMUM HEIGHT OF 0.7mm.
- RECOMMENDED LED'S INCLUDE THE FOLLOWING MANUFACTURERS:  
  
DIALIGHT: 597-77x1-5xx SERIES  
  
CHICAGO MINIATURE: 7016 SERIES  
  
KINGBRIGHT: APBL3025 SERIES (BICOLOR)  
APL3015 SERIES (SINGLE COLOR)
- THIS PART MEETS THE RESTRICTION OF HAZARDOUS SUBSTANCES IN ELECTRICAL AND ELECTRONIC EQUIPMENT (ROHS) DIRECTIVE (2002/95/EC).

<b>ENTER DESCRIPTION</b> EC NO: UST2006-0008 DRAWN BY: JORWANKS MONSON 2005/07/15 CHECKED BY: CHUCK BRUSSELL 2005/07/15 APPR: BRUSSELL 2005/07/25	<b>QUALITY SYMBOLS</b> ▽=0 ▽=0	<b>GENERAL TOLERANCES (UNLESS SPECIFIED)</b>		<b>DIMENSION STYLE</b> IN/MM		SCALE 4:1	DESIGN UNITS METRIC	THIRD ANGLE PROJECTION		
		4 PLACES ± --- ± --- 3 PLACES ± --- ± .005 2 PLACES ± 0.13 ± .01 1 PLACE ± 0.25 ± --- ANGULAR ± 1 °	mm INCH	DRAWN BY KS IMONSO	DATE 2004/07/08	TITLE 1X5 SFP LIGHT PIPE ASSEMBLY, BACK-TOP				
		DRAFT WHERE APPLICABLE MUST REMAIN WITHIN DIMENSIONS		CHECKED BY BRUSSELL	DATE 2004/07/08	APPROVED BY BRUSSELL	DATE 2004/07/08		MATERIAL NO. 747290001	DOCUMENT NO. SD-74729-001
				SIZE D	THIS DRAWING CONTAINS INFORMATION THAT IS PROPRIETARY TO MOLEX INCORPORATED AND SHOULD NOT BE USED WITHOUT WRITTEN PERMISSION		SHEET NO. 1 OF 5			

# PCB LAYOUT FOR BELLY TO BELLY MOUNTING

CROSS-HATCHED AREA DENOTES  
COMPONENT AND TRACE KEEP-OUT  
(EXCEPT CHASSIS GROUND)

# HOST CONNECTOR DETAIL



Detail1  
SCALE 8:1

- NOTES:
- PADS AND VIAS GO TO CHASSIS GROUND.
  - CAGE MOUNTING THRU HOLES (84 PLACES) TO BE PLATED.
  - HOLE PATTERN REPEATS FOR EACH PORT, SPACING BETWEEN PORTS IS .561 [14.25].

THIS AREA DENOTES  
COMPONENT KEEP-OUT  
(TRACES ALLOWED)

AREA OF LIGHT  
PIPE COVERAGE

RECOMMENDED CENTRIX  
OF LED

SEE Detail1

<b>ENTER DESCRIPTION</b> EC NO. US72006-0008 DRINKS MONSON 2005/07/15 CHK:BRUSSELL 2005/07/15 APPR:BRUSSELL 2005/07/25	QUALITY SYMBOLS ▽=0 ▽=0	GENERAL TOLERANCES (UNLESS SPECIFIED)	DIMENSION STYLE IN/MM	SCALE 6:1	DESIGN UNITS METRIC	THIRD ANGLE PROJECTION	
	4 PLACES ± --- ± --- 3 PLACES ± --- ± .005 2 PLACES ± 0.13 ± .01 1 PLACE ± 0.25 ± --- ANGULAR ± 1°	DRAWN BY KS IMONSO 2004/07/08 CHECKED BY BRUSSELL 2004/07/08 APPROVED BY BRUSSELL 2004/07/08	DATE DATE DATE	MATERIAL NO. 747290001	DOCUMENT NO. SD-74729-001	TITLE 1X5 SFP LIGHT PIPE ASSEMBLY, BACK-TOP	SHEET NO. 2 OF 5
	DRAFT WHERE APPLICABLE MUST REMAIN WITHIN DIMENSIONS	SIZE D	THIS DRAWING CONTAINS INFORMATION THAT IS PROPRIETARY TO MOLEX INCORPORATED AND SHOULD NOT BE USED WITHOUT WRITTEN PERMISSION	MOLEX INCORPORATED			
	Mo...						

# PCB LAYOUT FOR SINGLE SIDE MOUNTING

CROSS-HATCHED AREA DENOTES  
COMPONENT AND TRACE KEEP-OUT  
(EXCEPT CHASSIS GROUND)

THIS AREA DENOTES  
COMPONENT KEEP-OUT  
(TRACES ALLOWED)

SMALLER HOLE ON  
THESE FOUR ROWS ONLY

**NOTES:**

1. PADS AND VIAS GO TO CHASSIS GROUND.
2. CAGE MOUNTING THRU HOLES (42 PLACES) TO BE PLATED.
3. HOLE PATTERN REPEATS FOR EACH PORT.  
SPACING BETWEEN PORTS IS .561 (14.25).

2.844  
[72.25]

2.805  
[71.25]

SEE NOTE 3

2.244  
[57.00]

SEE NOTE 3

1.683  
[42.75]

SEE NOTE 3

1.122  
[28.50]

SEE NOTE 3

0.470  
[11.93]

0.338  
[8.58]

0.224  
[5.68]

0.000  
[0.00]

B

0.092  
[2.33]

0.039  
[1.00]

0.348  
[8.75]

A

0.000  
[0.00]

0.177  
[4.50]

0.374  
[9.50]

0.571  
[14.50]

0.768  
[19.50]

0.965  
[24.50]

1.075  
[27.30]

1.161  
[29.50]

1.260  
[32.00]

1.394  
[35.40]

1.457  
[37.00]

1.555  
[39.50]

1.638  
[41.60]

1.665  
[42.30]

1.755  
[44.57]

0.256 TYP.  
[6.50]

.113 TYP.  
[2.88]

0.079 TYP.  
[2.00]

0.100 TYP.  
[2.54]

0.140  
[3.56]

RECOMMENDED CENTRIX  
OF LED

AREA OF LIGHT  
PIPE COVERAGE

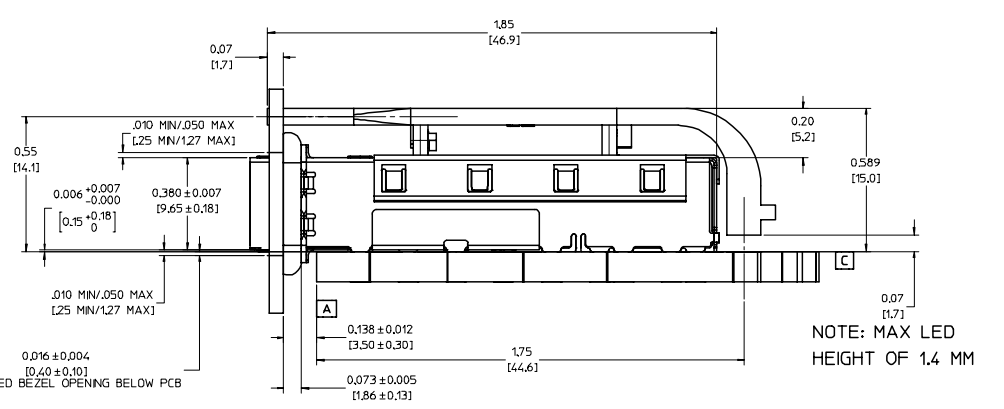
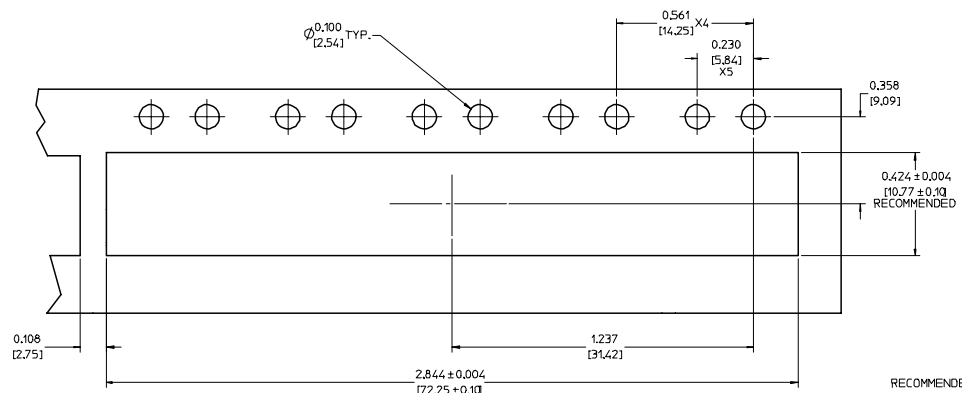
1. PADS AND VIAS GO TO CHASSIS GROUND.
2. CAGE MOUNTING THRU HOLES (42 PLACES) TO BE PLATED.
3. HOLE PATTERN REPEATS FOR EACH PORT.  
SPACING BETWEEN PORTS IS .561 (14.25).

<b>ENTER DESCRIPTION</b> EC NO: UST2006-0008 DRINKINS/ROBINSON 2005/07/15 CHICK/BROSSELL 2005/07/15 APPR:BRUSSELL 2005/07/25	QUALITY SYMBOLS	GENERAL TOLERANCES (UNLESS SPECIFIED)	DIMENSION STYLE	SCALE	DESIGN UNITS	THIRD ANGLE PROJECTION	
	▽=0 ▽=0	mm ± .13 INCH ± .005 2 PLACES ± 0.13 ± .01 1 PLACE ± 0.25 ± .01 ANGULAR ± 1°	IN/MM DATE 2004/07/08	6:1	METRIC		
	DESCRIPTION		DRAWN BY	DATE	TITLE		
			KS IMONSO	2004/07/08	1X5 SFP LIGHT PIPE ASSEMBLY, BACK-TOP		
			CHECKED BY	DATE			
			BRUSSELL	2004/07/08			
			APPROVED BY	DATE			
			BRUSSELL	2004/07/08			
			MATERIAL NO.	DOCUMENT NO.			
			747290001	SD-74729-001			
			DRAFT WHERE APPLICABLE MUST REMAIN WITHIN DIMENSIONS			SHEET NO. 3 OF 5	
			THIS DRAWING CONTAINS INFORMATION THAT IS PROPRIETARY TO MOLEX INCORPORATED AND SHOULD NOT BE USED WITHOUT WRITTEN PERMISSION				

20 19 18 17 16 15 14 13 12 11 10 9 8 7 6 5 4 3 2 1

M  
L  
K  
J  
I  
H  
G  
F  
E  
D  
C  
B  
A

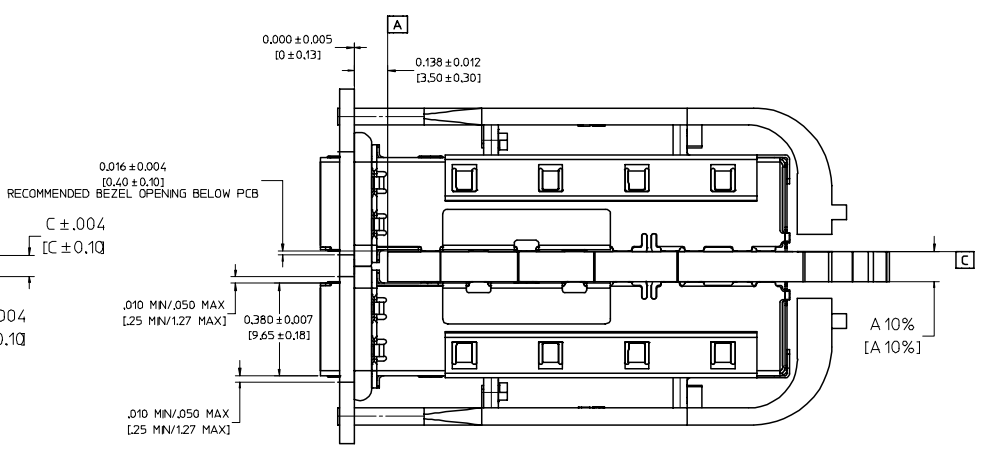
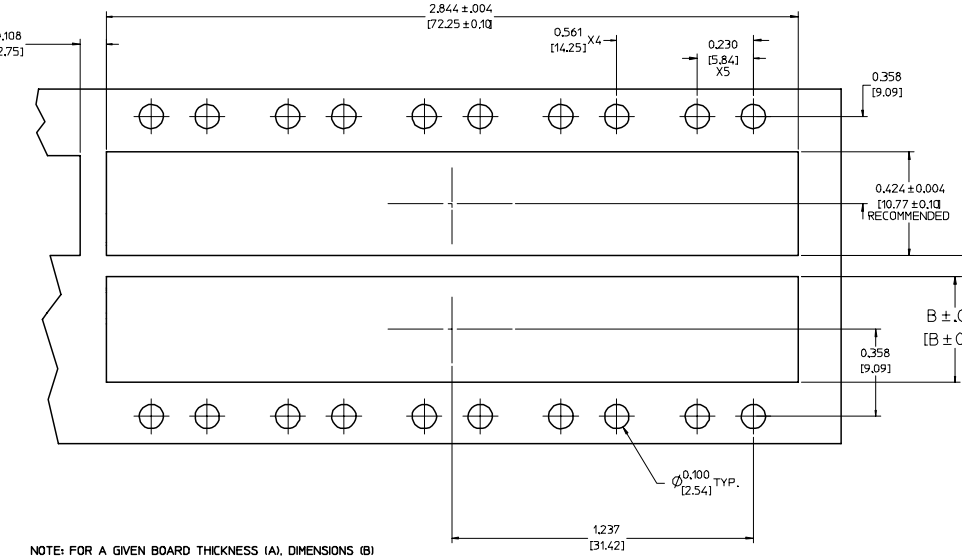
M  
L  
K  
J  
I  
H  
G  
F  
E  
D  
C  
B  
A



NOTE: MAX LED HEIGHT OF 1.4 MM

BEZEL AND BOARD POSITION DIMENSIONS FOR SINGLE SIDE MOUNTING

BEZEL AND BOARD POSITION DIMENSIONS FOR BELLY TO BELLY MOUNTING



NOTE: FOR A GIVEN BOARD THICKNESS (A), DIMENSIONS (B) AND (C) ARE DIRECTLY AFFECTED.

USE RECOMMENDED DIMENSIONS AND TOLERANCES TO AID IN DEVELOPING BEZEL OPENING.

FOR EXAMPLE USING A BOARD THICKNESS OF .125" THE RECOMMENDED VALUES WOULD BE:

- A= .125/3.18 ± 10%
- B= .434/11.03 ± .004
- C= .088/2.23 ± .004

<b>ENTER DESCRIPTION</b> EC NO: UST2006-0008 DORWANS MONSON 2005/07/15 CHFKBRUSSELL 2005/07/15 APPR: BRUSSELL 2005/07/25	QUALITY SYMBOLS	GENERAL TOLERANCES (UNLESS SPECIFIED)	DIMENSION STYLE	SCALE	DESIGN UNITS	THIRD ANGLE PROJECTION
	▽=0 ▽=0	mm INCH 4 PLACES ± --- ± --- 3 PLACES ± --- ± .005 2 PLACES ± 0.13 ± .01 1 PLACE ± 0.25 ± --- ANGULAR ± 1 °	IN/MM DRAWN BY DATE KS IMONSO 2004/07/08 CHECKED BY DATE BRUSSELL 2004/07/08 APPROVED BY DATE BRUSSELL 2004/07/08	4:1	METRIC	TITLE 1X5 SFP LIGHT PIPE ASSEMBLY, BACK-TOP MATERIAL NO. 747290001 DOCUMENT NO. SD-74729-001
		DRAFT WHERE APPLICABLE MUST REMAIN WITHIN DIMENSIONS				MOLEX INCORPORATED SHEET NO. 4 OF 5
						THIS DRAWING CONTAINS INFORMATION THAT IS PROPRIETARY TO MOLEX INCORPORATED AND SHOULD NOT BE USED WITHOUT WRITTEN PERMISSION

19 18 17 16 15 14 13 12 11 10 9 8 7 6 5 4 3 2 1

20 19 18 17 16 15 14 13 12 11 10 9 8 7 6 5 4 3 2 1

M

L

K

J

I

H

G

F

E

D

C

B

A

M

L

K

J

I

H

G

F

E

D

C

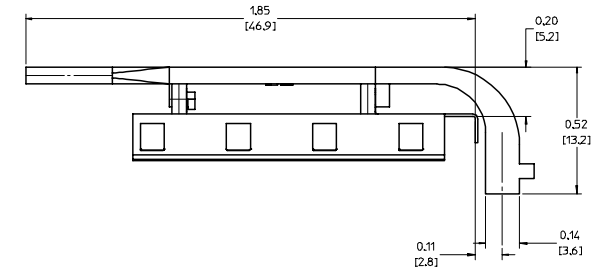
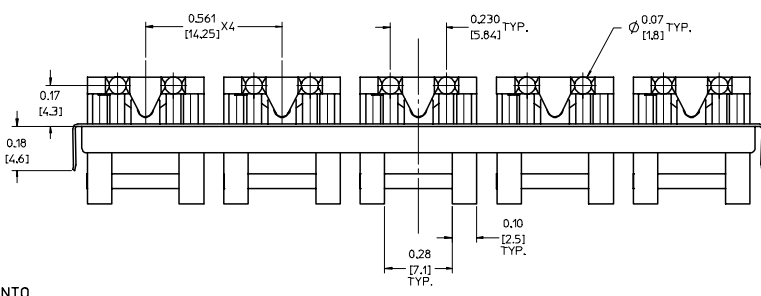
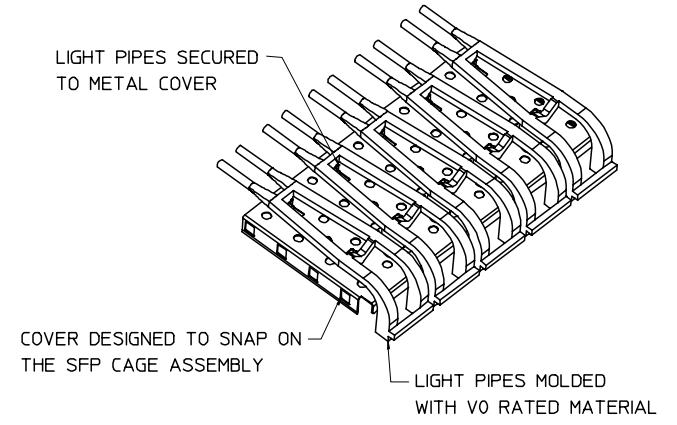
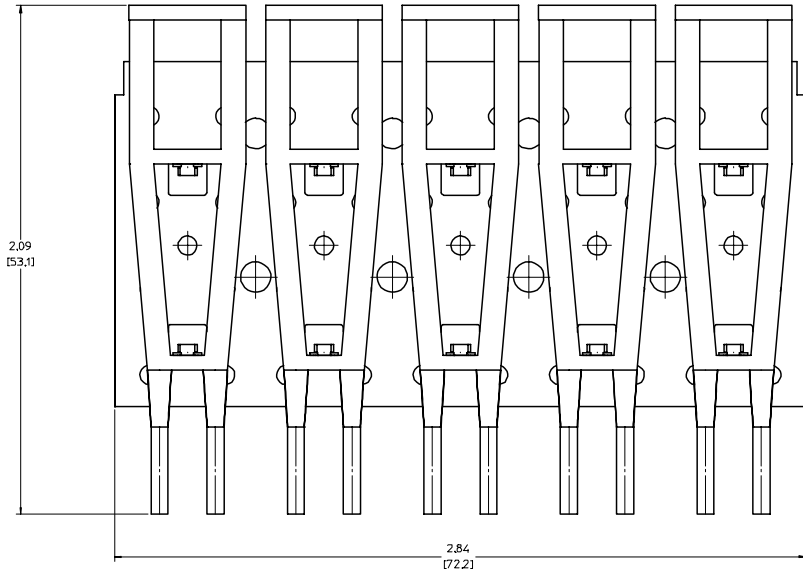
B

A

DATE	REV	CHANGES	COMMENTS
2004/07/08	A	INITIAL RELEASE	N/A
2005/06/03	B	CORRECTED P/N FOR DIALIGHT LED	DOCUMENT CHANGE ONLY
2005/06/10	C	UPDATED VIEWS TO SHOW CLEARANCE HOLES ADDED TO THE COVER	N/A

<b>ENTER DESCRIPTION</b> EC NO: UST2006-0008 DRAWN BY: JORWANKI MONSON 2005/07/15 CHECKED BY: CHFKBRUSSELL 2005/07/15 APPR: BRUSSELL 2005/07/25 DESCRIPTION:	QUALITY SYMBOLS ▽=0 ▽=0	GENERAL TOLERANCES (UNLESS SPECIFIED) <table border="1"> <tr> <th></th> <th>mm</th> <th>INCH</th> </tr> <tr> <td>4 PLACES ±</td> <td>---</td> <td>---</td> </tr> <tr> <td>3 PLACES ±</td> <td>---</td> <td>±.005</td> </tr> <tr> <td>2 PLACES ±</td> <td>0.13</td> <td>±.01</td> </tr> <tr> <td>1 PLACE ±</td> <td>0.25</td> <td>---</td> </tr> <tr> <td>ANGULAR</td> <td colspan="2">± 1 °</td> </tr> </table>		mm	INCH	4 PLACES ±	---	---	3 PLACES ±	---	±.005	2 PLACES ±	0.13	±.01	1 PLACE ±	0.25	---	ANGULAR	± 1 °		DIMENSION STYLE IN/MM	SCALE 1:1	DESIGN UNITS METRIC	THIRD ANGLE PROJECTION
		mm	INCH																					
	4 PLACES ±	---	---																					
	3 PLACES ±	---	±.005																					
2 PLACES ±	0.13	±.01																						
1 PLACE ±	0.25	---																						
ANGULAR	± 1 °																							
			DRAWN BY: KS IMONSO DATE: 2004/07/08 CHECKED BY: BRUSSELL DATE: 2004/07/08 APPROVED BY: BRUSSELL DATE: 2004/07/08			TITLE 1X5 SFP LIGHT PIPE ASSEMBLY, BACK-TOP																		
			MATERIAL NO: 747290001		DOCUMENT NO: SD-74729-001	SHEET NO: 5 OF 5																		
		DRAFT WHERE APPLICABLE MUST REMAIN WITHIN DIMENSIONS	SIZE D	THIS DRAWING CONTAINS INFORMATION THAT IS PROPRIETARY TO MOLEX INCORPORATED AND SHOULD NOT BE USED WITHOUT WRITTEN PERMISSION																				

19 18 17 16 15 14 13 12 11 10 9 8 7 6 5 4 3 2 1



**NOTES:**

- THIS LIGHT PIPE ASSEMBLY TO BE USED WITH THE FOLLOWING 1X5 SFP CAGE ASSEMBLIES:  
  
747230001 - 1X5 SFP CAGE ASSEMBLY W/ PRESS FIT PINS (REFER TO DOCUMENT SD-74723-001)
- IT IS RECOMMENDED THAT THE CAGE ASSEMBLY BE PRESSED INTO THE PCB PRIOR TO ASSEMBLING THE LIGHT PIPE ASSEMBLY.
- LED'S TO HAVE A MAXIMUM HEIGHT OF 1.4mm AND A MINIMUM HEIGHT OF 0.7mm.
- RECOMMENDED LED'S INCLUDE THE FOLLOWING MANUFACTURERS:

DIALIGHT: 597-77x1-5xx SERIES  
  
CHICAGO MINIATURE: 7016 SERIES  
  
KINGBRIGHT: APBL3025 SERIES (BICOLOR)  
APL3015 SERIES (SINGLE COLOR)

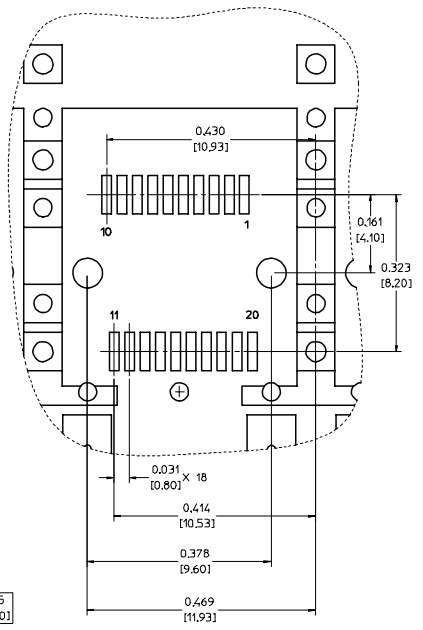
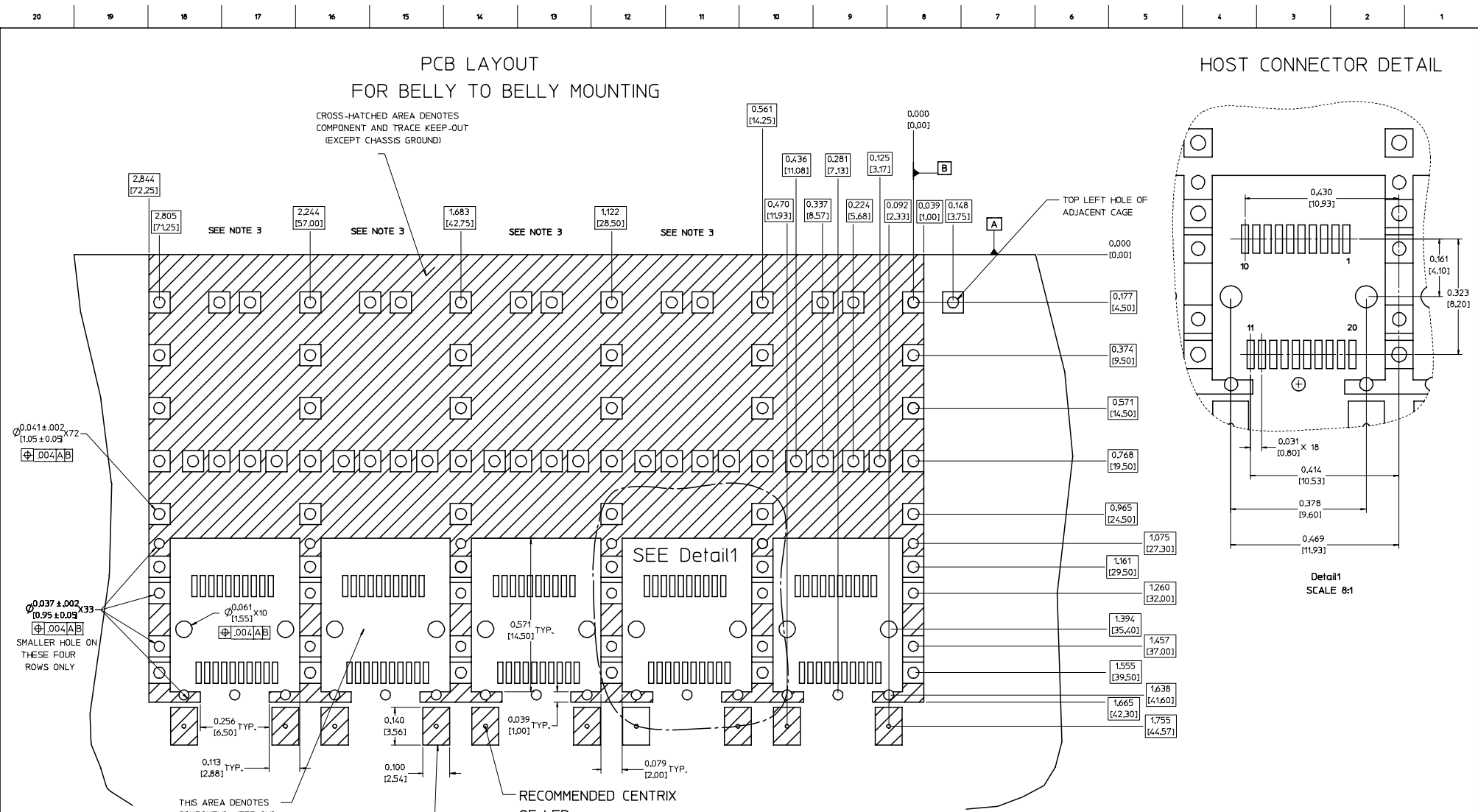
5. THIS PART MEETS THE RESTRICTION OF HAZARDOUS SUBSTANCES IN ELECTRICAL AND ELECTRONIC EQUIPMENT (ROHS) DIRECTIVE (2002/95/EC).

<b>ENTER DESCRIPTION</b> EC NO: UST2006-0008 DRAWN BY: JORWANKS MONSON 2005/07/15 CHECKED BY: CHUCK BRUSSELL 2005/07/15 APPR: BRUSSELL 2005/07/25	QUALITY SYMBOLS	GENERAL TOLERANCES (UNLESS SPECIFIED)		DIMENSION STYLE		SCALE	DESIGN UNITS	THIRD ANGLE PROJECTION  <b>MOLEX INCORPORATED</b>  DOCUMENT NO. SD-74729-001 SHEET NO. 1 OF 5	
	$\nabla=0$ $\nabla=0$	4 PLACES ± --- ± --- 3 PLACES ± --- ± .005 2 PLACES ± 0.13 ± .01 1 PLACE ± 0.25 ± --- ANGULAR ± 1 °	INCH INCH INCH INCH	IN/MM INCH INCH INCH	DRAWN BY: KS IMONSO 2004/07/08 CHECKED BY: BRUSSELL 2004/07/08 APPROVED BY: BRUSSELL 2004/07/08	DATE DATE DATE	4:1		METRIC
	DRAFT WHERE APPLICABLE MUST REMAIN WITHIN DIMENSIONS		MATERIAL NO. 747290001		THIS DRAWING CONTAINS INFORMATION THAT IS PROPRIETARY TO MOLEX INCORPORATED AND SHOULD NOT BE USED WITHOUT WRITTEN PERMISSION				
			SIZE D						

# PCB LAYOUT FOR BELLY TO BELLY MOUNTING

CROSS-HATCHED AREA DENOTES COMPONENT AND TRACE KEEP-OUT (EXCEPT CHASSIS GROUND)

# HOST CONNECTOR DETAIL



Detail 1  
SCALE 8:1

- NOTES:
- PADS AND VIAS GO TO CHASSIS GROUND.
  - CAGE MOUNTING THRU HOLES (84 PLACES) TO BE PLATED.
  - HOLE PATTERN REPEATS FOR EACH PORT, SPACING BETWEEN PORTS IS .561 [14.25].

<b>ENTER DESCRIPTION</b> EC NO: US72006-0008 DRINKS MONSON 2005/07/15 CHK:BRUSSELL 2005/07/15 APPR:BRUSSELL 2005/07/25 REV DESCRIPTION	QUALITY SYMBOLS	GENERAL TOLERANCES (UNLESS SPECIFIED)	DIMENSION STYLE	SCALE	DESIGN UNITS	THIRD ANGLE PROJECTION
	$\nabla=0$ $\nabla=0$	mm INCH 4 PLACES ± --- ± --- 3 PLACES ± --- ± .005 2 PLACES ± 0.13 ± .01 1 PLACE ± 0.25 ± --- ANGULAR ± 1°	IN/MM	6:1	METRIC	DRAWN BY DATE KS IMONSO 2004/07/08 CHECKED BY DATE BRUSSELL 2004/07/08 APPROVED BY DATE BRUSSELL 2004/07/08
	DRAFT WHERE APPLICABLE MUST REMAIN WITHIN DIMENSIONS	MATERIAL NO. 747290001	DOCUMENT NO. SD-74729-001	TITLE 1X5 SFP LIGHT PIPE ASSEMBLY, BACK-TOP MOLEX INCORPORATED		
	SIZE D	THIS DRAWING CONTAINS INFORMATION THAT IS PROPRIETARY TO MOLEX INCORPORATED AND SHOULD NOT BE USED WITHOUT WRITTEN PERMISSION		SHEET NO. 2 OF 5		

# PCB LAYOUT FOR SINGLE SIDE MOUNTING

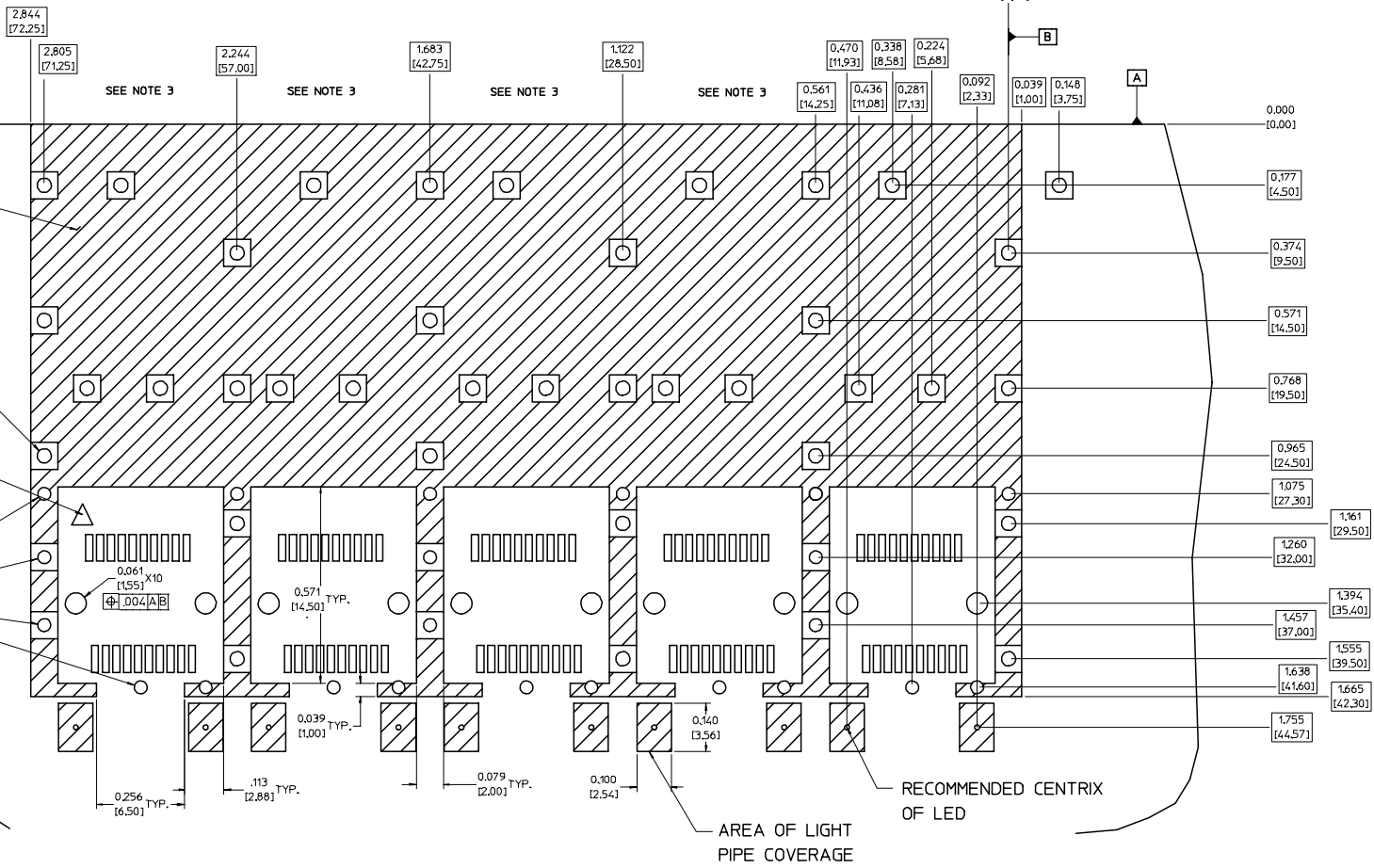
CROSS-HATCHED AREA DENOTES  
COMPONENT AND TRACE KEEP-OUT  
(EXCEPT CHASSIS GROUND)

THIS AREA DENOTES  
COMPONENT KEEP-OUT  
(TRACES ALLOWED)

$\varnothing 0.037$  X22  
[1.95] [0.95]  
[0.004] [A] [B]  
SMALLER HOLE ON  
THESE FOUR ROWS ONLY

**NOTES:**

1. PADS AND VIAS GO TO CHASSIS GROUND.
2. CAGE MOUNTING THRU HOLES (42 PLACES) TO BE PLATED.
3. HOLE PATTERN REPEATS FOR EACH PORT.  
SPACING BETWEEN PORTS IS .561 [14.25].



RECOMMENDED CENTRIX  
OF LED  
AREA OF LIGHT  
PIPE COVERAGE

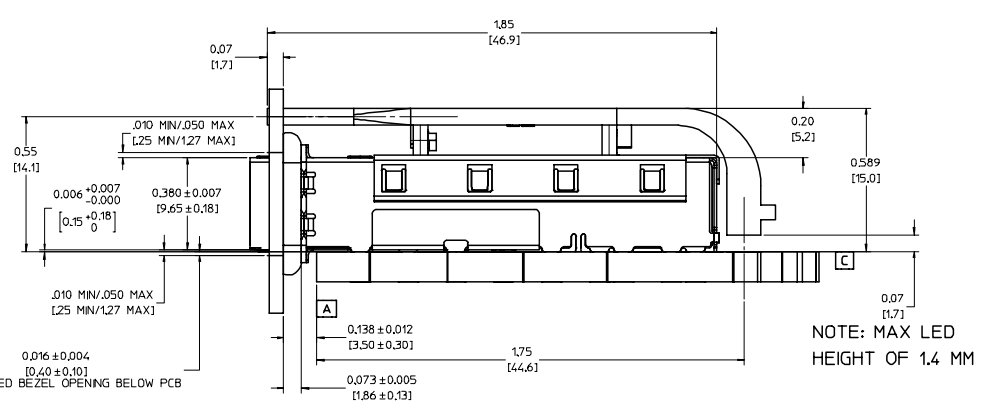
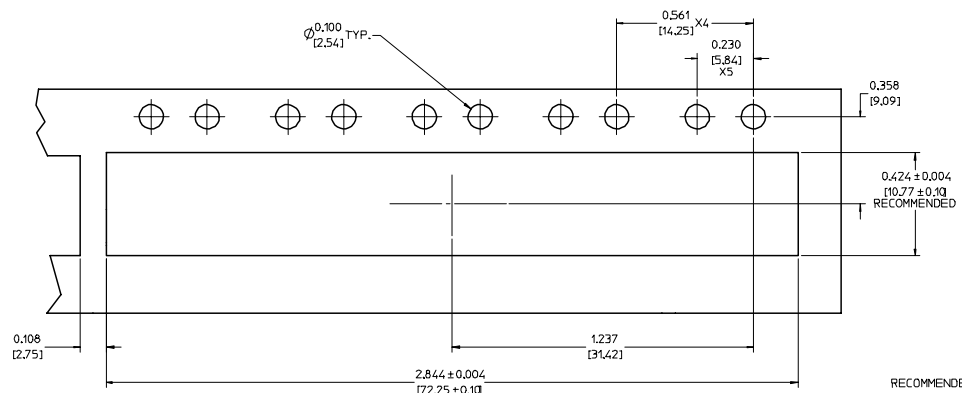
<b>ENTER DESCRIPTION</b> EC NO: UST2006-0008 DRINKS MONSON 2005/07/15 CHK:BRUSSELL 2005/07/15 APPR:BRUSSELL 2005/07/25	QUALITY SYMBOLS	GENERAL TOLERANCES (UNLESS SPECIFIED)	DIMENSION STYLE	SCALE	DESIGN UNITS	THIRD ANGLE PROJECTION
	$\nabla=0$ $\nabla=0$	mm INCH 4 PLACES ± .--- ± --- 3 PLACES ± .--- ± .005 2 PLACES ± 0.13 ± .01 1 PLACE ± 0.25 ± --- ANGULAR ± 1°	IN/MM DATE DRAWN BY DATE CHECKED BY DATE APPROVED BY DATE	6:1	METRIC	[Symbol] THIRD ANGLE PROJECTION
	DRAFT WHERE APPLICABLE MUST REMAIN WITHIN DIMENSIONS	MATERIAL NO: 747290001	DOCUMENT NO: SD-74729-001	TITLE 1X5 SFP LIGHT PIPE ASSEMBLY, BACK-TOP		MOLEX INCORPORATED
	SIZE D	THIS DRAWING CONTAINS INFORMATION THAT IS PROPRIETARY TO MOLEX INCORPORATED AND SHOULD NOT BE USED WITHOUT WRITTEN PERMISSION		SHEET NO. 3 OF 5		



20 19 18 17 16 15 14 13 12 11 10 9 8 7 6 5 4 3 2 1

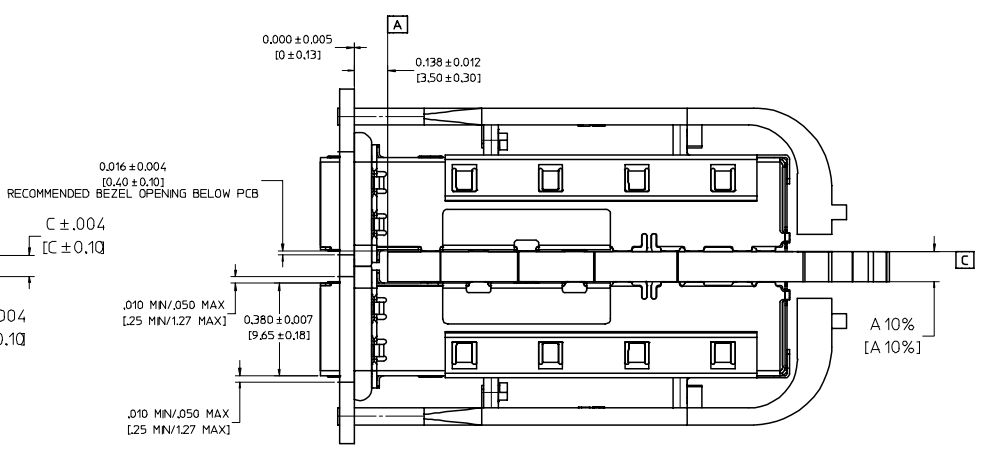
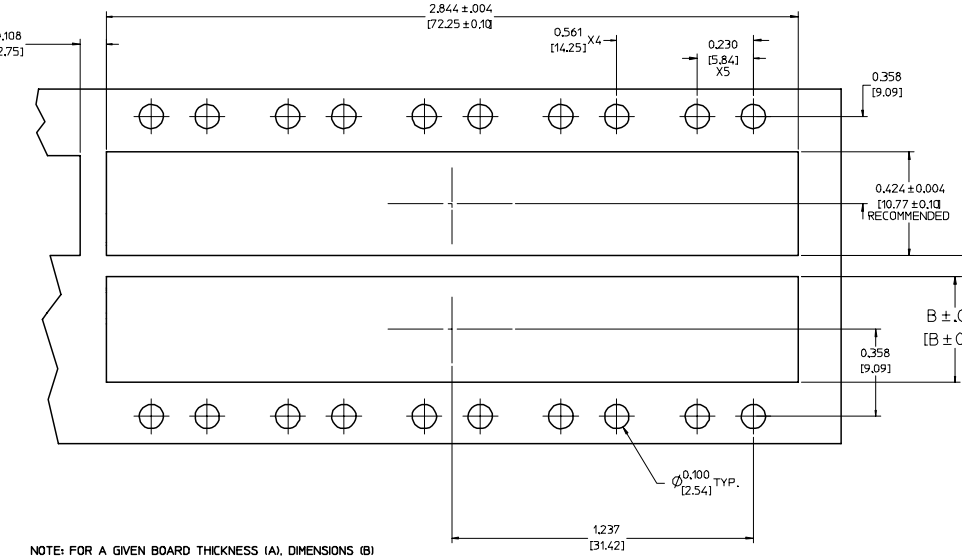
M  
L  
K  
J  
I  
H  
G  
F  
E  
D  
C  
B  
A

M  
L  
K  
J  
I  
H  
G  
F  
E  
D  
C  
B  
A



BEZEL AND BOARD POSITION DIMENSIONS FOR SINGLE SIDE MOUNTING

BEZEL AND BOARD POSITION DIMENSIONS FOR BELLY TO BELLY MOUNTING



NOTE: FOR A GIVEN BOARD THICKNESS (A), DIMENSIONS (B) AND (C) ARE DIRECTLY AFFECTED.

USE RECOMMENDED DIMENSIONS AND TOLERANCES TO AID IN DEVELOPING BEZEL OPENING.

FOR EXAMPLE USING A BOARD THICKNESS OF .125" THE RECOMMENDED VALUES WOULD BE:

- A= .125/3.18 ± 10%
- B= .434/11.03 ± .004
- C= .088/2.23 ± .004

Rev. D 2004/06/28

<b>ENTER DESCRIPTION</b> EC NO: UST2006-0008 TORWANS MONSON 2005/07/15 CHFKBRUSSELL 2005/07/15 APPR: BRUSSELL 2005/07/25	QUALITY SYMBOLS	GENERAL TOLERANCES (UNLESS SPECIFIED)	DIMENSION STYLE	SCALE	DESIGN UNITS	THIRD ANGLE PROJECTION
	▽=0 ▽=0	mm INCH 4 PLACES ± --- ± --- 3 PLACES ± --- ± .005 2 PLACES ± 0.13 ± .01 1 PLACE ± 0.25 ± --- ANGULAR ± 1 °	IN/MM DRAWN BY DATE KS IMONSO 2004/07/08 CHECKED BY DATE BRUSSELL 2004/07/08 APPROVED BY DATE BRUSSELL 2004/07/08	4:1	METRIC	
	DRAFT WHERE APPLICABLE MUST REMAIN WITHIN DIMENSIONS	MATERIAL NO: 747290001 DOCUMENT NO: SD-74729-001	TITLE: 1X5 SFP LIGHT PIPE ASSEMBLY, BACK-TOP MOLEX INCORPORATED			
	SIZE D	THIS DRAWING CONTAINS INFORMATION THAT IS PROPRIETARY TO MOLEX INCORPORATED AND SHOULD NOT BE USED WITHOUT WRITTEN PERMISSION	SHEET NO: 4 OF 5			

19 18 17 16 15 14 13 12 11 10 9 8 7 6 5 4 3 2 1

20 19 18 17 16 15 14 13 12 11 10 9 8 7 6 5 4 3 2 1

M

M

L

L

K

K

J

J

I

I

H

H

G

G

F

F

E

E

D

D

C

C

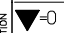
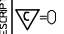

B

B

A

A

DATE	REV	CHANGES	COMMENTS
2004/07/08	A	INITIAL RELEASE	N/A
2005/06/03	B	CORRECTED P/N FOR DIALIGHT LED	DOCUMENT CHANGE ONLY
2005/06/10	C	UPDATED VIEWS TO SHOW CLEARANCE HOLES ADDED TO THE COVER	N/A

<b>ENTER DESCRIPTION</b> EC NO: UST2006-0008 DRAWN BY: JORWANKI MONSON 2005/07/15 CHECKED BY: CHFKBRUSSELL 2005/07/15 APPROVED BY: BRUSSELL 2005/07/25	<b>QUALITY SYMBOLS</b>  = 0  = 0.05	<b>GENERAL TOLERANCES (UNLESS SPECIFIED)</b>		<b>DIMENSION STYLE</b> IN/MM		SCALE 1:1	DESIGN UNITS METRIC	 <b>THIRD ANGLE PROJECTION</b>
		4 PLACES ± --- ± --- 3 PLACES ± --- ± .005 2 PLACES ± 0.13 ± .01 1 PLACE ± 0.25 ± ---	mm INCH	DRAWN BY KS IMONSO	DATE 2004/07/08	TITLE 1X5 SFP LIGHT PIPE ASSEMBLY, BACK-TOP		
		ANGULAR ± 1 °	APPROVED BY BRUSSELL	DATE 2004/07/08	Molex <b>MOLEX INCORPORATED</b>			
		DRAFT WHERE APPLICABLE MUST REMAIN WITHIN DIMENSIONS	MATERIAL NO. 747290001	DOCUMENT NO. SD-74729-001	SHEET NO. 5 OF 5			

19 18 17 16 15 14 13 12 11 10 9 8 7 6 5 4 3 2 1