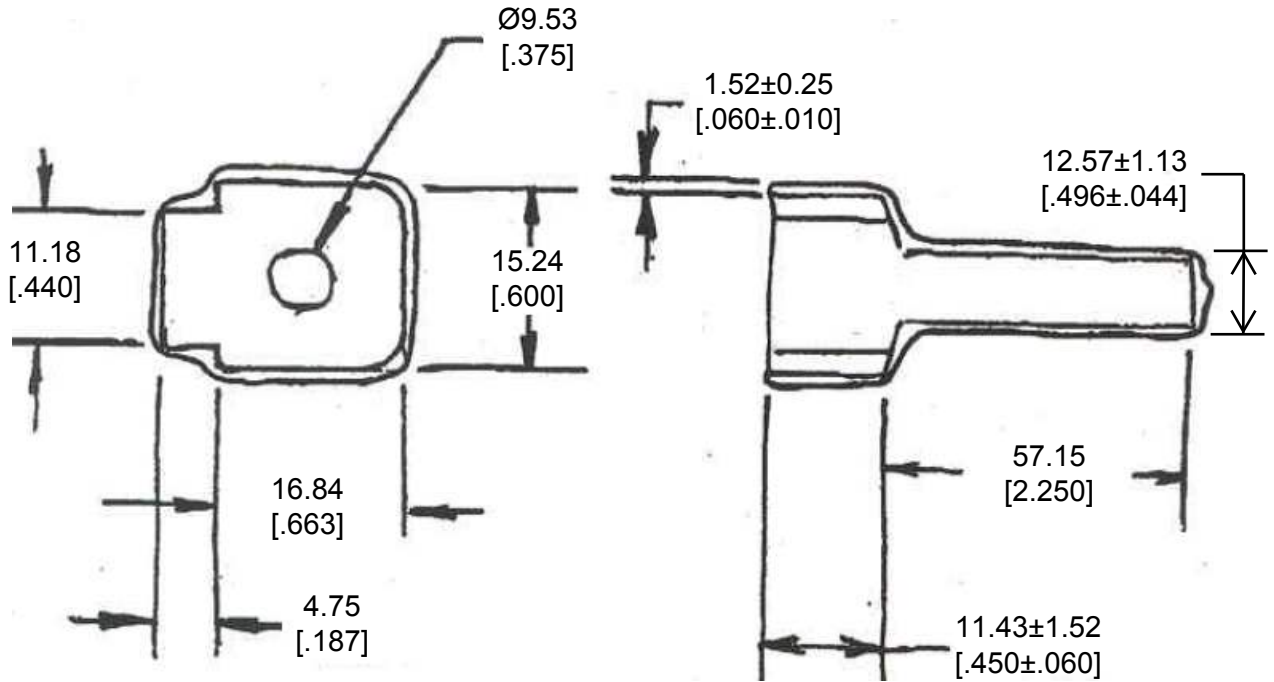


| REVISIONS | | | | | |
|-----------|-----|---------------------------|----------|-----|------|
| P | LTR | DESCRIPTION | DATE | DWN | APVD |
| | A1 | REVISED PER ECO-16-008054 | 05-26-16 | DM | DM |



2014

RELEASED FOR PUBLICATION

THIS DRAWING IS UNPUBLISHED.

ALL RIGHTS RESERVED.

© COPYRIGHT 2014 BY TE CONNECTIVITY

3. PART NO. DTM6S-BT
2. TEMPERATURE RATING: -29°C TO +100°C [-20°F TO +212°F]
1. THIS PART IS USED ON DTM06-6S PLUG WITH ANY MODIFICATION THAT DOES NOT INCLUDE AN END CAP.

| | | | | | | |
|--|------------------|---|-----------|------------|---------------|--------------|
| DIMENSIONS: MM [INCH] | DWN | D. MEYER 07JUL2014 | MATERIAL | PVC | FINISH | GRAY |
| | CHK | B. MILLIGAN 07JUL2014 | | | | |
| TOLERANCES UNLESS OTHERWISE SPECIFIED: | APVD | D. MEYER 07JUL2014 | | | | |
| 0 PLC ± 1 PLC ± 2 PLC ± 0.63 [.025] 3 PLC ± 4 PLC ± ANGLES ± 5° | PRODUCT SPEC | NAME BOOT, PLUG, 6PIN DTM SERIES | | | | |
| | APPLICATION SPEC | SIZE | CAGE CODE | DRAWING NO | RESTRICTED TO | |
| | WEIGHT | 6.00 g | A 4 | 4AFU8 | C - DTM6S-BT | - |
| | Customer Drawing | | | SCALE | NONE | SHEET 1 OF 1 |