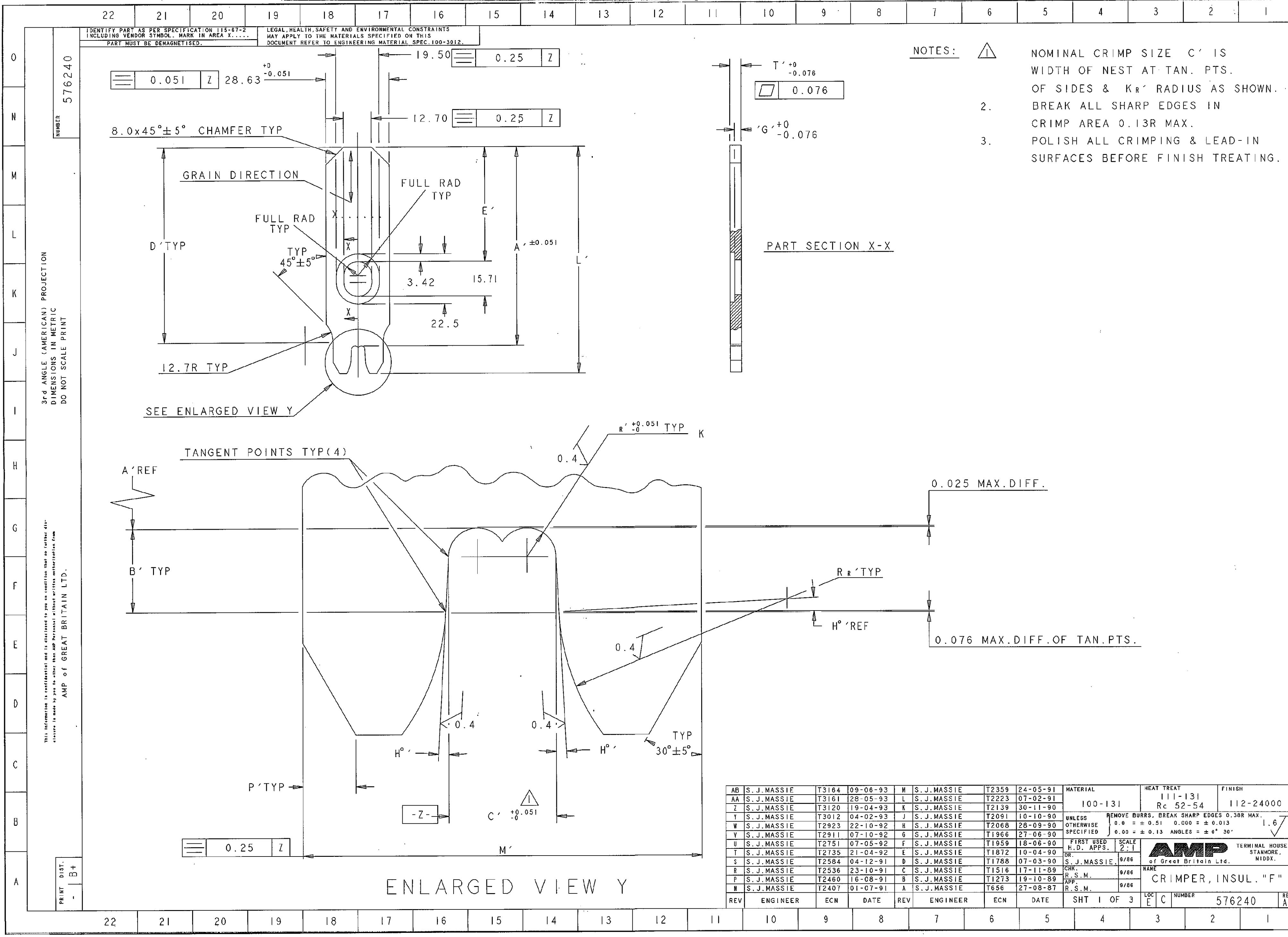


NAME: E0009153 OBJECT: 576240S11 DATE: 22-JAN-98 13:35:08



AB	S. J. MASSIE	T3164	09-06-93	M	S. J. MASSIE	T2359	24-05-91	MATERIAL	HEAT TREAT	FINISH
AA	S. J. MASSIE	T3161	28-05-93	L	S. J. MASSIE	T2223	07-02-91	100-131	111-131	112-24000
Z	S. J. MASSIE	T3120	19-04-93	K	S. J. MASSIE	T2139	30-11-90		Rc 52-54	
Y	S. J. MASSIE	T3012	04-02-93	J	S. J. MASSIE	T2091	10-10-90	UNLESS REMOVE BURRS, BREAK SHARP EDGES 0.38R MAX.		1.6
W	S. J. MASSIE	T2923	22-10-92	H	S. J. MASSIE	T2068	28-09-90	OTHERWISE 0.0 = ± 0.51 0.000 = ± 0.013		
V	S. J. MASSIE	T2911	07-10-92	G	S. J. MASSIE	T1966	27-06-90	SPECIFIED 0.00 = ± 0.13 ANGLES = ± 0° 30'		
U	S. J. MASSIE	T2751	07-05-92	F	S. J. MASSIE	T1959	18-06-90	FIRST USED	SCALE	
T	S. J. MASSIE	T2735	21-04-92	E	S. J. MASSIE	T1872	10-04-90	H.D. APPS.	2:1	
S	S. J. MASSIE	T2584	04-12-91	D	S. J. MASSIE	T1788	07-03-90	DR. S. J. MASSIE.	9/86	
R	S. J. MASSIE	T2536	23-10-91	C	S. J. MASSIE	T1516	17-11-89	CHK. R. S. M.	9/86	
P	S. J. MASSIE	T2460	16-08-91	B	S. J. MASSIE	T1273	19-10-89	APP. R. S. M.	9/86	
N	S. J. MASSIE	T2407	01-07-91	A	S. J. MASSIE	T656	27-08-87	R. S. M.	9/86	
REV	ENGINEER	ECN	DATE	REV	ENGINEER	ECN	DATE	SHT 1 OF 3	LOC E C	NUMBER 576240





IDENTIFY PART AS PER SPECIFICATION I15-67-2 INCLUDING VENDOR SYMBOL. MARK IN AREA X.....  
 PART MUST BE DEMAGNETISED.  
 LEGAL, HEALTH, SAFETY AND ENVIRONMENTAL CONSTRAINTS MAY APPLY TO THE MATERIALS SPECIFIED ON THIS DOCUMENT REFER TO ENGINEERING MATERIAL SPEC.100-3012.

NUMBER  
576240

3rd ANGLE (AMERICAN) PROJECTION  
 DIMENSIONS IN METRIC  
 DO NOT SCALE PRINT

This information is confidential and is disclosed to you on condition that no further disclosure is made by you to other than AMP Personnel without written authorization from AMP of GREAT BRITAIN LTD.

PART NO.	REV	C	T	A	L	E	KR	H°	B	RR	P	M	D	G	FIRST USED
3-576240-4	AC	5.33	2.29	90.88	101.8	51.77	1.439	3	4.78	12.7	0.40	16.50	88.40	#	576594-3
3-576240-5	AD	6.35	4.75	89.81	100.8	51.77	1.715	3	4.78	12.7	0.40	#	#	#	576008-5
3-576240-6	AE	5.33	3.96	91.64	102.6	51.77	1.439	3	4.78	12.7	0.40	17.45	88.40	#	576097-6
3-576240-7	AF	3.05	3.18	90.88	101.8	51.77	0.824	3	4.78	12.7	0.40	#	#	#	576041-7
3-576240-8	AK	4.06	2.50	91.64	102.6	51.77	1.097	3	4.78	12.7	0.40	14.00	88.40	#	1157019-1
3-576240-9	AK	4.06	2.50	91.64	102.6	51.77	1.220	3	4.78	12.7	0.40	14.00	88.40	#	1157023-1
4-576240-0	AL	4.32	3.00	91.64	102.6	51.77	1.166	3	4.78	12.7	0.40	17.00	88.40	#	1157039-1
4-576240-1															
4-576240-2															
4-576240-3															
4-576240-4															
4-576240-5															
4-576240-6															
4-576240-7															
4-576240-8															
4-576240-9															
5-576240-0															
5-576240-1															
5-576240-2															
5-576240-3															
5-576240-4															
5-576240-5															
5-576240-6															
5-576240-7															
5-576240-8															
5-576240-9															
6-576240-0															
6-576240-1															
6-576240-2															
6-576240-3															
6-576240-4															
6-576240-5															
6-576240-6															

(SPECIAL - KR = 30%)

MATERIAL	HEAT TREAT	FINISH
SEE SHEET 1	SEE SHEET 1	SEE SHEET 1
AL L. J. LOFTHOUSE 0368-98 16-07-98	UNLESS REMOVE BURRS. BREAK SHARP EDGES 0.38R MAX.	1.6
AK L. J. LOFTHOUSE 0255-98 22-05-98	OTHERWISE 0.0 = ± 0.51 0.000 = ± 0.013	
AJ L. J. LOFTHOUSE 0130-98 13-03-98	SPECIFIED 0.00 = ± 0.13 ANGLES = ± 0° 30'	
AH L. J. LOFTHOUSE 0121-98 06-03-98	FIRST USED H.D. APPS.	SCALE #
AG L. J. LOFTHOUSE 0024-98 16-01-98	DR. S. J. MASSIE 9/86	NAME
AF R. M. SQUIRES T3537 20-04-95	CHK R. S. M. 9/86	CRIMPER, INSUL. "F"
AE R. M. SQUIRES T3458 29-09-94	APP. R. S. M. 9/86	
AD S. J. MASSIE T3319 18-01-94		
AC S. J. MASSIE T3231 13-08-93		
REV ENGINEER ECN DATE	SHT 3 OF 3	LOC E C NUMBER 576240 REV AL

NAME: EBP0353 OBJECT: 576240/03 DATE: 22-JUL-98 15:31:59