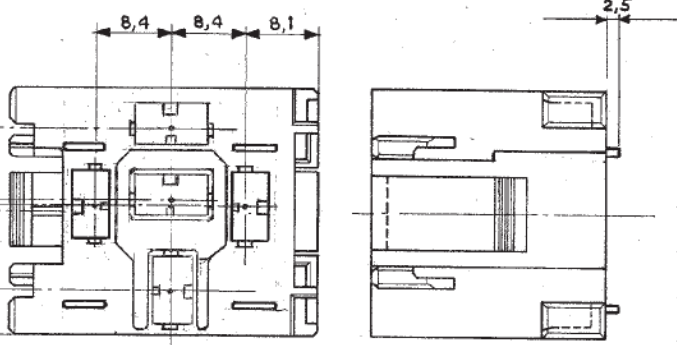
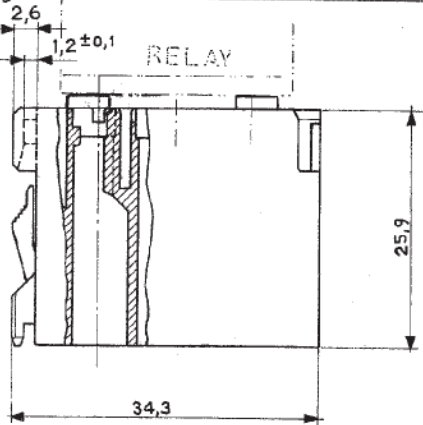


SCALA NON IMPEGNATIVA
(DO NOT SCALE)
DIMENSIONI IN mm
DIMENSIONS IN mm

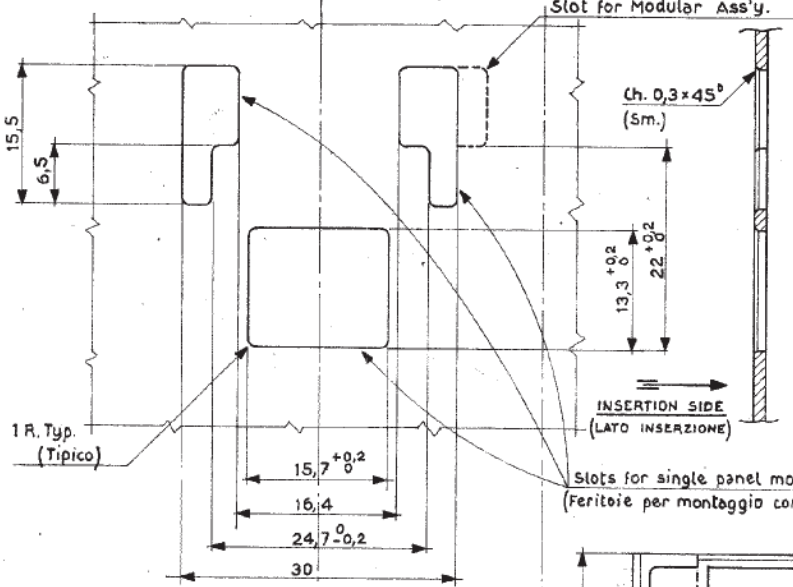
METRIC

PROIEZIONE EUROPEA
(EUROPEAN PROJECTION)

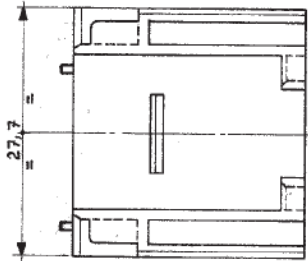
(Adatto per lamiera
spess. 1,2 ± 0,1)
Suitable for
Thick Plate.



(Feritoia addizionale per Assembl. Modulare).
Slot for Modular Ass'y.



Slots for single panel mounting.
(Feritoie per montaggio connettore singolo).



Notes: (Note)

1) No more than 2 modules may be assembled together.
(Non assemblare più di 2 connettori insieme).

OBSOLETE

Orange (Arançio)	Polyamide 6.6 (Poliammide 6.6)	1-281856-0
Violet (Viola)		281856-9
Gray (Grigio)		281856-8
Brown (Marrone)		281856-7
Yellow (Giallo)		281856-6
Blue (Blu)		281856-5
Green (Verde)		281856-4
Red (Rosso)		281856-3
Black (Nero)		281856-2
Natural (Naturale)		281856-1
COLORE (COLOUR)	MATERIALE (MATERIAL)	NUMERO (PART NUMBER)

REV. (REV.)	REVISIONI (REVISION RECORD)	DIS. (DR.)	DATA (DATE)
A1	REVISED PER ECR-19-018072	SS/TO	2019
A	In Produzione	EB	JUL 68
4	Aggiunto versioni colorate	EB	15-68
3	AGGIORNATO # 26-6-87	DIS	3-88
2	P/N ERA 1A86-5382	DIS	4-5-87
1	AGGIORNATO # 3-3-87	DIS	3-87

FINITURA - COLORE (FINISH - COLOUR)	MATERIALE (MATERIAL)	NUMERO (PART NUMBER)
CUSTOMER DWG.		DISEGNO PER CLIENTE
FOR REFERENCE ONLY		SOLO PER RIFERIMENTO
THIS DRAWING IS UNPUBLISHED		RELEASE FOR PUBLICATION 19
© COPYRIGHT 19 BY AMP INCORPORATED, HARRISBURG, PA ALL INTERNATIONAL RIGHT RESERVED AMP PRODUCTS MAY BE COVERED BY U.S. AND FOREIGN PATENT AND/OR PATENT PENDING		TOLLERANZE SE NON DIVERSAMENTE SPECIFICATO (TOLERANCES UNLESS OTHERWISE SPECIFIED)
± 0,3		ANGOLI (ANGLES) ± 2°
A1		TE Connectivity
DESCRIZIONE (DESCRIPTION)		MODULAR CONNECTOR FOR RELAY
WITH POSITIVE LOCK CAVITIES.		LOC. (LOC.)
1A3	C-281856	REV. (REV.)
		A1
		FOLIO (SHEET) 1
		DI (OF) 1

DISTRIBUZIONE (PRINT DIST)