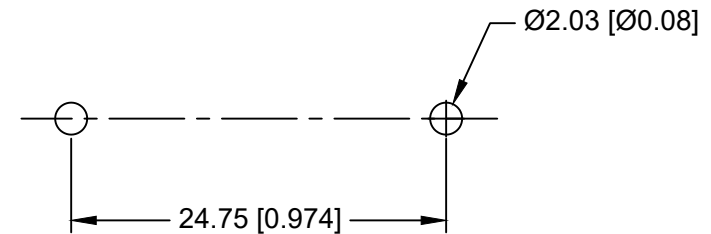
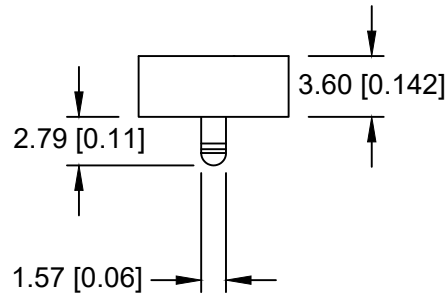
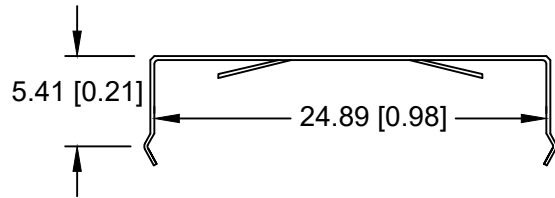
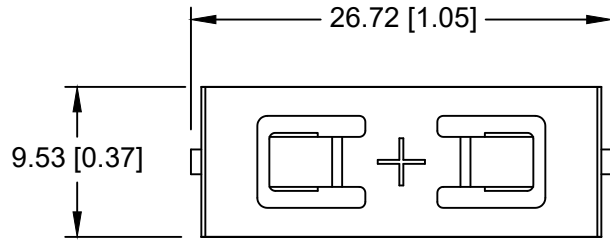



Date	SYM	REVISION RECORD	AUTH	DR.	CK.
03/26/19	A	Updated to "ROHS Compliant"	T.B.	B.S.	
04/05/19	B	Updated notes	T.B.	B.S.	
01/08/20	C	Updated shape of positive contact tabs Dim. 9.53 was 6.99 Dim. 24.89 was 24.50 Dim. 3.60 was 4.0 Dim. 2.79 was 2.30	T.B.	B.S.	



PCB LAYOUT

NOTES:

- * Material- 0.25mm Phosphor Bronze, Nickel plated.
- * Vibration test: 10-50-10 hz swept in 60 seconds
x,y,z direction: 1 hour each direction
- * Result: no dislodgement of the cell or damage
no discontinuity over 10 micro-seconds
- * Shock test: half sine wave acceleration 150g.
6 ms 1 shock pulses each direction per axis
- * Result: no evidence of physical damage
- * Drop Test: Mounted on board and dropped 1 time per direction
from 1m high to wooden floor
- * Result: No dislodgement of the cell, No damage to the holders
- * Approximate weight: 0.48g
- * ROHS COMPLIANT

Tolerance (Except as noted)	 Memory Protection Devices, Inc 200 Broad Hollow Road, Farmingdale, New York 11735		
decimal ±.5 (.020)		Scale	Drawn By B.S.
			Approved By T.B.
Fractional ± .8 (.030)	Title CR2430 BATTERY STRAP, THROUGH HOLE MOUNT		
Angular ± 3°	Date 01/08/20	Drawing Number BC-2015	