

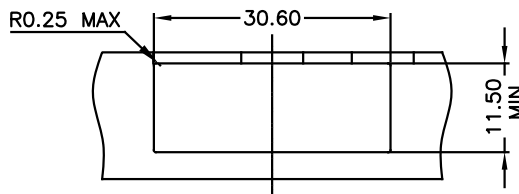
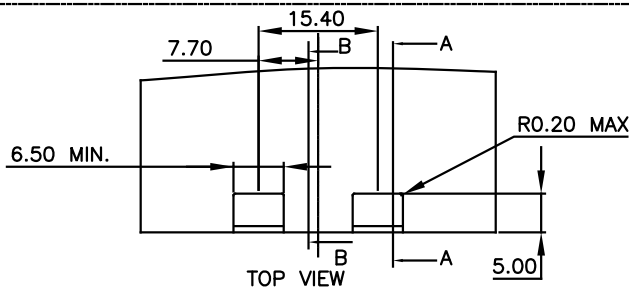
REVISIONS			
REV	DESCRIPTION, ECN, EAR NO.	DATE	APP'D
A	INITIAL RELEASE	APR30/21	K.T

NOTES:

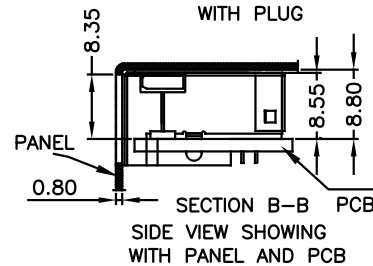
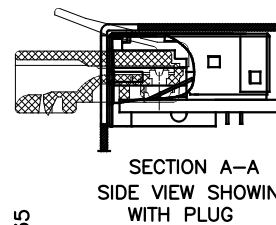
ELECTRICAL:

- VOLTAGE RATING: 125 VAC.
- CURRENT RATING: 1.25 AMPS PER CONTACT.
- INSULATING RESISTANCE: 500 MEGOHMS MINIMUM.
- DIELECTRIC STRENGTH: CONTACT TO CONTACT, 1,000VAC, 60Hz, 1 MIN. CONTACT TO SHIELD, 1,500VAC, 60Hz, 1 MIN.
- CATEGORY 5E CHARACTERISTIC:

MHz	dB, MIN.	dB, MIN.	dB, MAX.
1.0	65	30	0.1
4.0	65	30	0.1
8.0	64.9	30	0.1
10.0	63	30	0.1
16.0	58.9	30	0.2
20.0	57	30	0.2
25.0	55	30	0.2
31.25	53.1	30	0.2
62.5	47.1	24.1	0.3
100.0	43	20	0.4



FRONT VIEW
RECOMMEND PANEL LAYOUT



MECHANICAL:

- SHIELD: STAINLESS STEEL, WITH TIN-DIP ON SOLDER TABS.
- HOUSING: HIGH TEMP THERMOPLASTIC. UL 94V-0, BLACK
- INSERT: HIGH TEMP THERMOPLASTIC UL 94V-0.
- PCB: FR-4.
- CONTACT: PHOSPHOR BRONZE. SELECTIVE GOLD PLATING FOR MATING SURFACE, SEE AMPHENOL PART NUMBER FOR DETAIL. 50u" NICKEL UNDERPLATE 100u" MATTE TIN PLATING ON CONTACT SOLDER TAIL.

ENVIRONMENTAL:

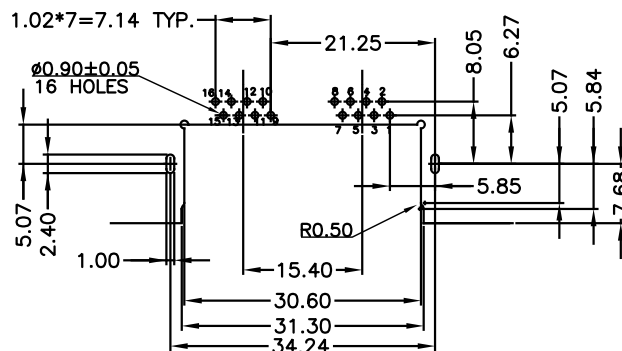
- STORAGE: -40° TO +85°.
 - OPERATION: -55° TO +85°.
- MATES WITH MODULAR PLUG CONFORMING TO TIA 1096.
RECOMMENDED SOLDER PROCESS: WAVE SOLDER, PEAK TEMPERATURE 260° FOR 5~8 SECONDS

AMPHENOL PART NUMBER: RJE72-288-6X0X

- GOLD PLATING OPTION _____ OPTIONS (SEE BELOW TABLE 1)
- 1=6u" GOLD PLATING
 - 2=15u" GOLD PLATING
 - 3=30u" GOLD PLATING
 - 4=50u" GOLD PLATING

TABLE 1:

RJE722886X01	3.18	2.36
RJE722886X02	2.27	1.57
AMPHENOL P/N:	DIM A	RECOMMEND PCB THICKNESS



RECOMMENDED PCB LAYOUT
TOLERANCE: ±0.05mm.

THIS DOCUMENT CONTAINS PROPRIETARY INFORMATION AND SUCH INFORMATION MAY NOT BE DISCLOSED TO OTHERS FOR ANY PURPOSE OR USED FOR MANUFACTURING PURPOSES WITHOUT WRITTEN PERMISSION FROM AMPHENOL CANADA CORP.

UNLESS SPECIFIED OTHERWISE	DRAWN	JAMISON C	APR30/21
PRIMARY UNITS MILLIMETERS	CHECKED	L.CHAN	APR30/21
SECONDARY	M.E. APP'D		
REFERENCE IN PARENTHESES	Q.A. APP'D		
GENERAL TOLERANCES FOR MM	DWG APP'D	A.GREEN	APR30/21
1 DECIMAL PLACE ±0.5	ENG. REL. NO.		
2 DECIMAL PLACES ±0.30	REF.		
3 DECIMAL PLACES ±0.10	THIRD ANGLE PROJECTION		
AUGULAR DEGREE ±3°	DO NOT SCALE DRAWING		

Amphenol Canada Corp. Commercial Products	
MODULAR JACK, 1X2 PORTS, 8 POSITIONS, 8 CONTACTS, SHIELDED WITHOUT TABS, WITHOUT LED, SINK PCB TYPE, TAB UP, CAT5E	
DWG NO.	REV A
P-RJE72-288-6X0X	
CODE ID NO. 03554	SHEET 1 OF 1