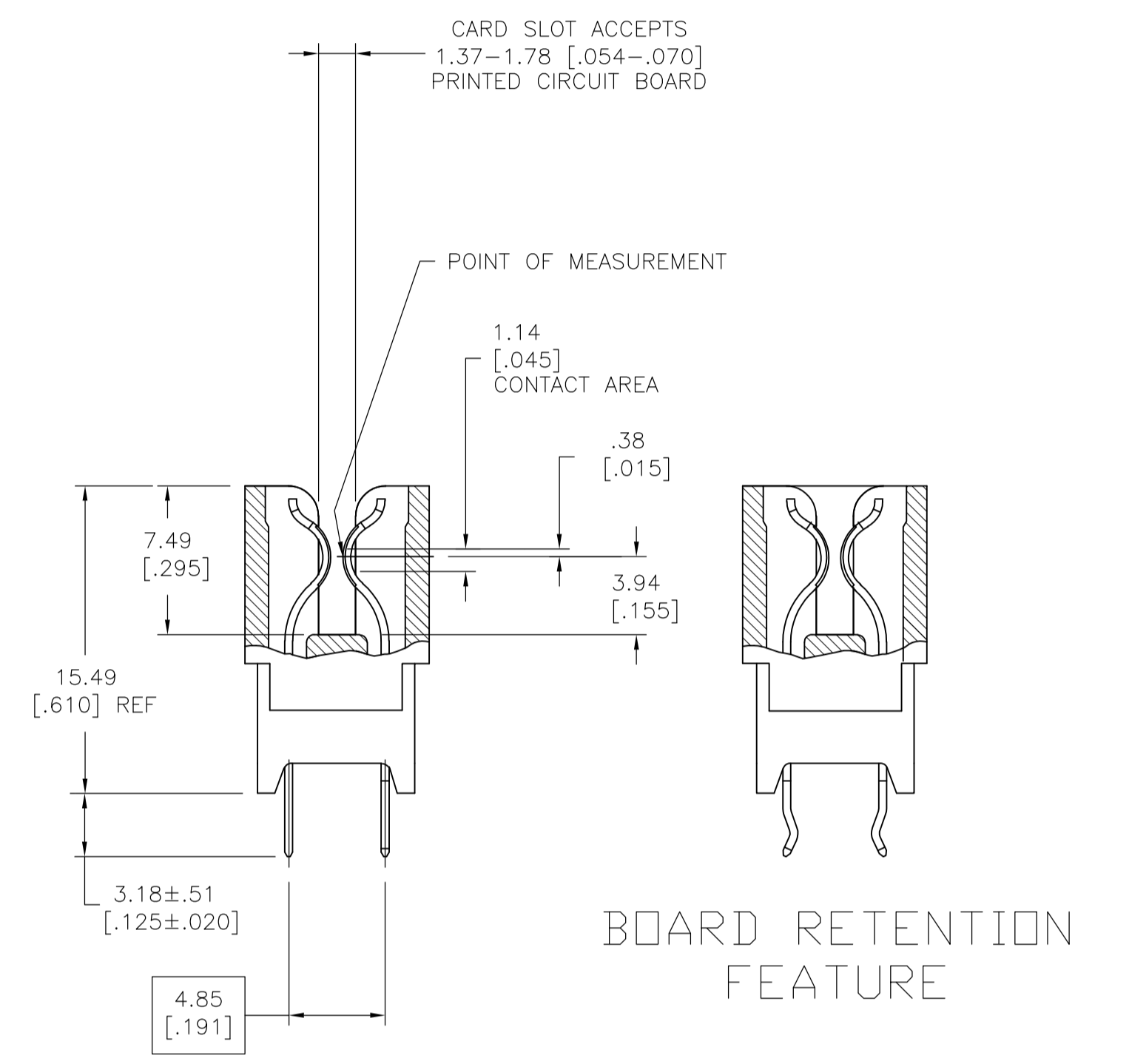
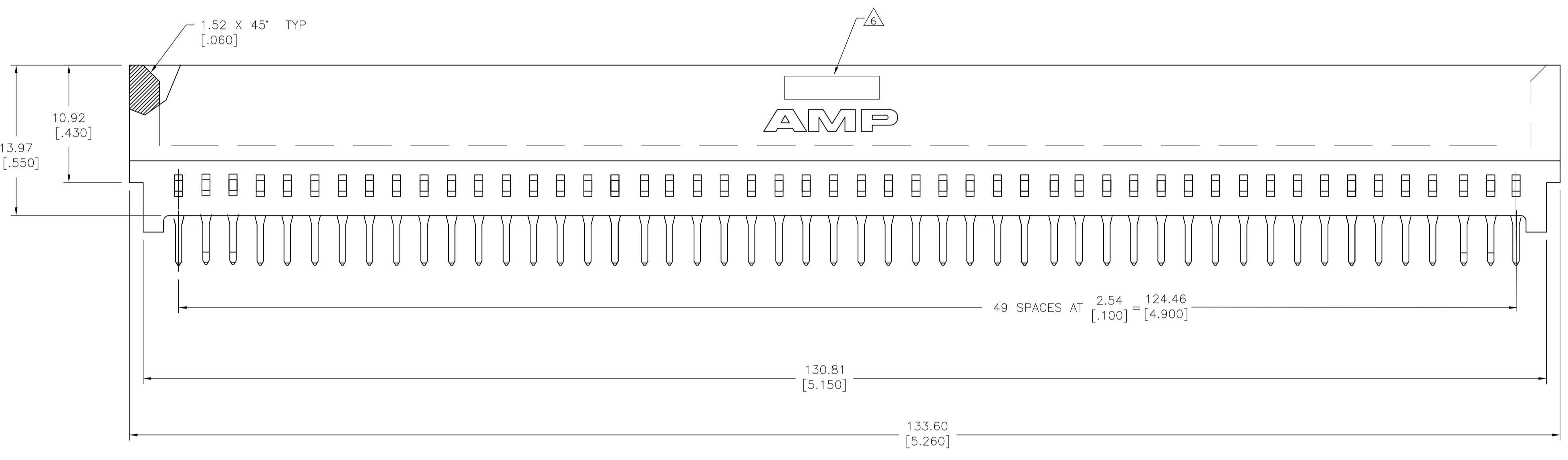
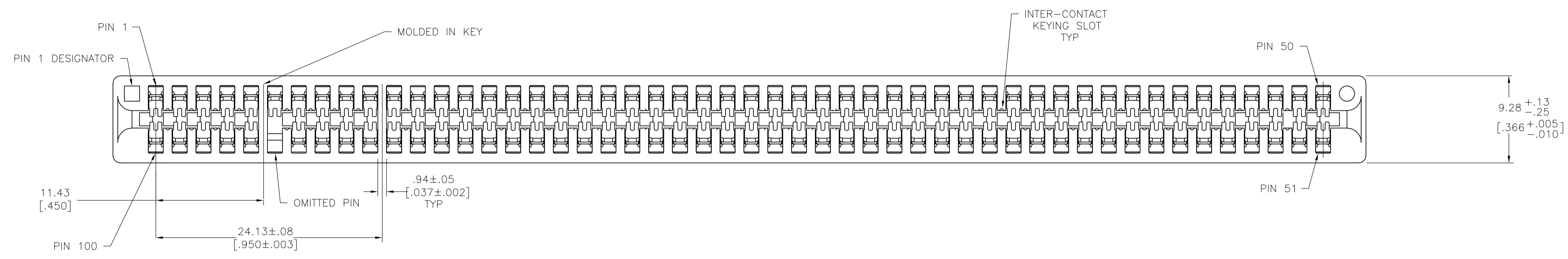


LOC		DIST		REVISIONS			
GP	00	P	LTR	DESCRIPTION	DATE	DWN	APVD
A1	REV PER	ECO-09-017748			30JULY09	RG	EH



- 1 HOUSING: GLASS FILLED POLYESTER, BLACK, IR REFLOW COMPATIBLE.
- 2 CONTACT: HIGH CONDUCTIVITY COPPER ALLOY.
- 3 NICKEL PLATE .00127 $\left[\begin{smallmatrix} .000050 \end{smallmatrix} \right]$ MIN - ALL OVER.
- 4 MATTE TIN PLATE .00254 $\left[\begin{smallmatrix} .000100 \end{smallmatrix} \right]$ MIN - SOLDER POSTS.
- 5 GOLD PLATE .00076 $\left[\begin{smallmatrix} .000030 \end{smallmatrix} \right]$ MIN - MATING AREA.
- 6 AMP PART NUMBER, DATE CODE AND CSA LOGO MARKED IN APPROXIMATE AREA SHOWN, EITHER SIDE.
- 7 DATUMS AND BASIC DIMENSIONS ESTABLISHED BY CUSTOMER.
- 8 CONNECTORS SHOWN ARE USED IN APPLICATIONS WITH VRM MODULES WEIGHING 3 OUNCES AND LESS. ALTERNATE CONNECTOR AND LATCH METHOD IS AVAILABLE FOR VRM MODULES WEIGHING UP TO 6 OUNCES.

2,3,48,49,52,53,98,99	5,6 & 10,11	95	50	6658202-1
RETENTION LOCATION		MOLDED KEY LOCATE	OMITTED PIN	NO OF DUAL POSN
				PART NUMBER

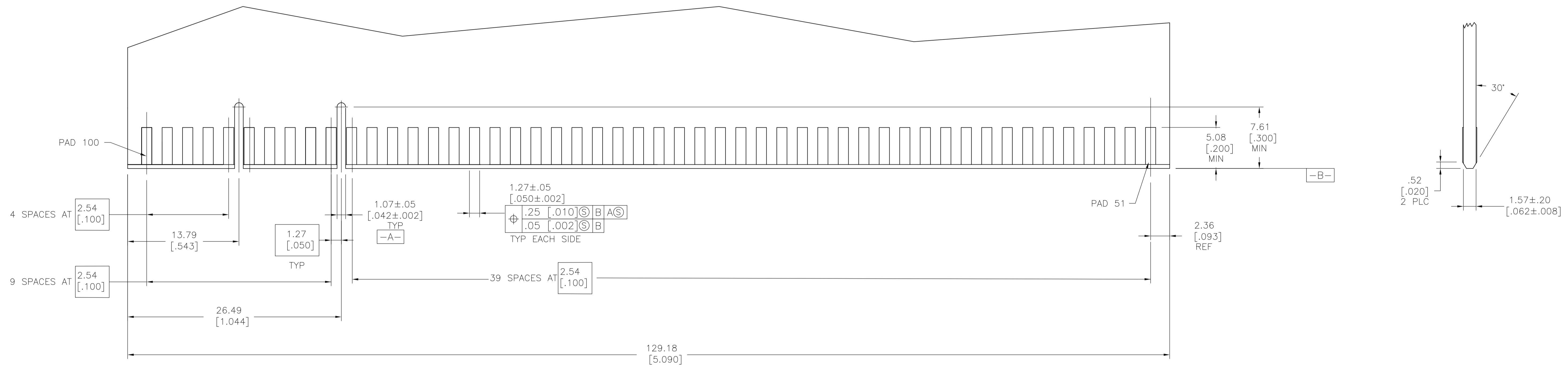
THIS DRAWING IS A CONTROLLED DOCUMENT.

DIMENSIONS:	TOLERANCES UNLESS OTHERWISE SPECIFIED:	DIN AL FRANTUM 18 AUG 05	Tyco Electronics Corporation
1/16	0 PLC ± -	18 AUG 05	Middletown, PA 17057
	1 PLC ± -		
	2 PLC ± 0.13 $\left[\begin{smallmatrix} .005 \end{smallmatrix} \right]$		
	3 PLC ± -		
	4 PLC ± -		
	ANGLES ± °		
MATERIAL	FINISH	SIZE	WEIGHT
1 2	3 4 5	A1	00779
CUSTOMER DRAWING		SCALE	SHEET
		5:1	1 OF 2

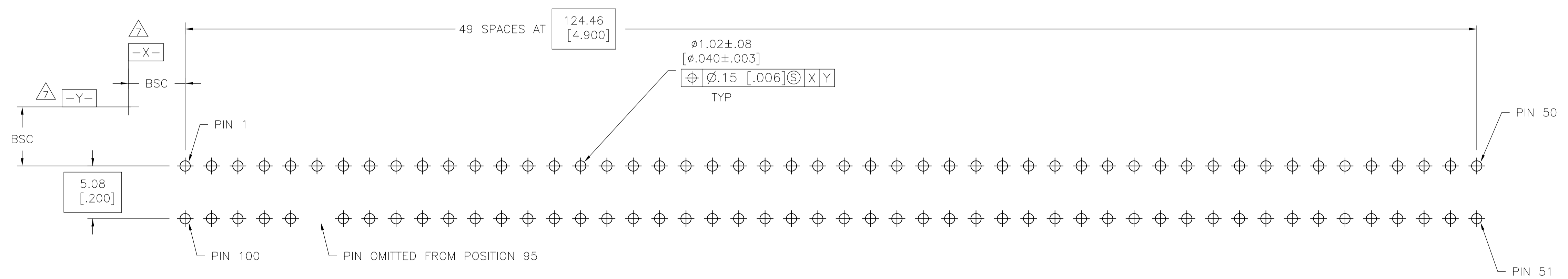
PRODUCT SPEC: CONNECTOR ASSEMBLY, STANDARD EDGE II HIGH CURRENT DUAL POSITION, 2.54 $\left[\begin{smallmatrix} .100 \end{smallmatrix} \right]$ CENTERLINE

DRAWING NO: 6658202

REV: A1



RECOMMENDED MATING BOARD EDGE CONFIGURATION



RECOMMENDED PC BOARD HOLE LAYOUT

THIS DRAWING IS A CONTROLLED DOCUMENT.		DN AL FRANTUM 18 AUG 05	Tyco Electronics Tyco Electronics Corporation Middletown, PA 17057
TOLERANCES UNLESS OTHERWISE SPECIFIED:		CHK AL FRANTUM 18 AUG 05	
DIMENSIONS:	UM	APVD	NAME
0 PLC	± -	PRODUCT SPEC	CONNECTOR ASSEMBLY, STANDARD EDGE II
1 PLC	± -	APPLICATION SPEC	HIGH CURRENT
2 PLC	± -	WEIGHT	DUAL POSITION, 2.54 [.100] CENTERLINE
3 PLC	± .13 [.005]	SCALE	5:1
4 PLC	± -	SHEET	2 OF 2
ANGLES	± -	REV	A1
MATERIAL	FINISH	CUSTOMER DRAWING	
SIZE		CAGE CODE	DRAWING NO
A1		00779	6658202