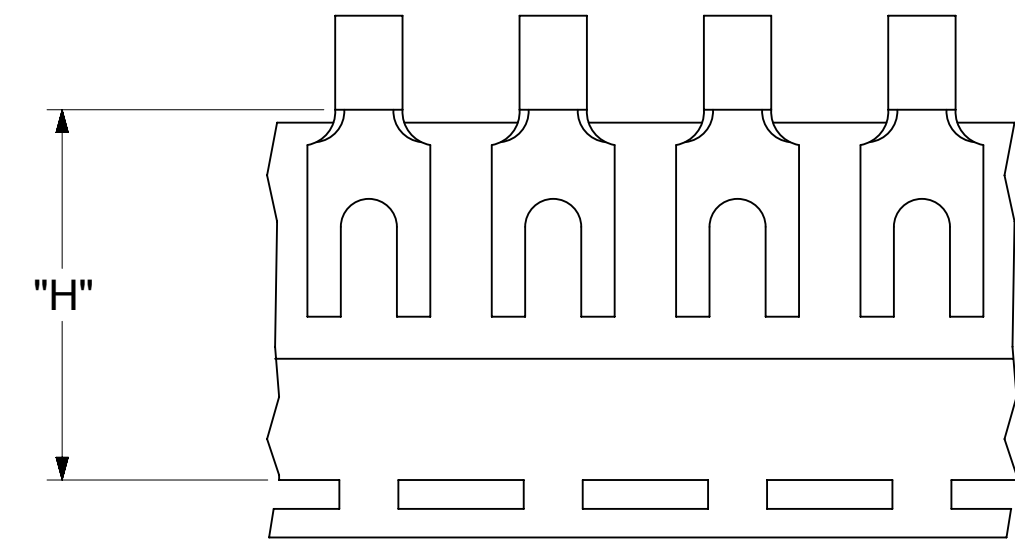
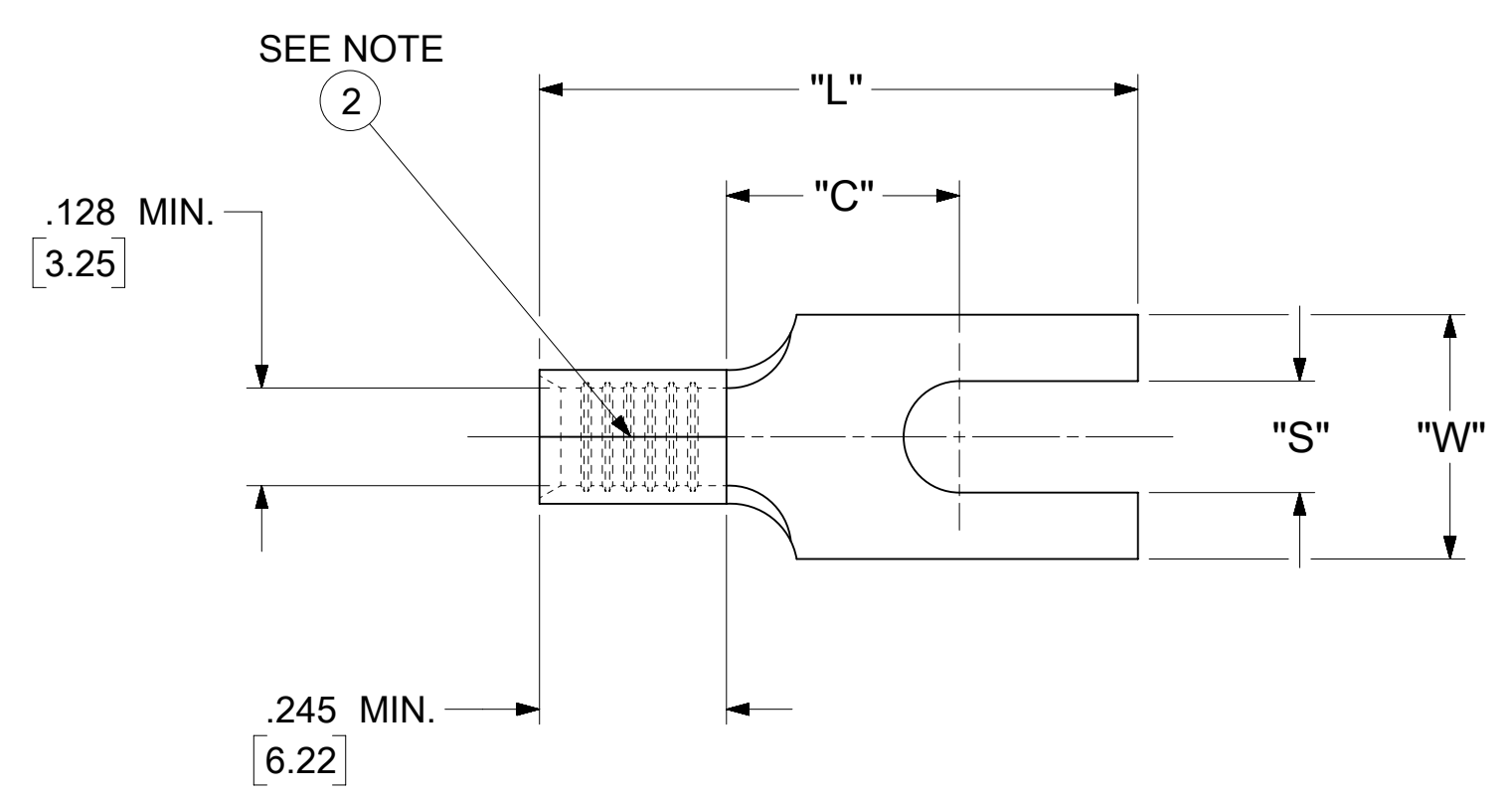


LOOSE PIECE		TAPE MOUNTED		SPECIFICATIONS					
MATERIAL NUMBER	ENGINEERING NUMBER	MATERIAL NUMBER	ENGINEERING NUMBER	STUD SIZE	"S" ±.005 [0.13]	"W" ±.010 [0.25]	"C" MIN.	"L" MAX.	"H"
---	---	---	---	8	.173 [4.39]	.415 [10.54]	.305 [7.75]	.784 [19.91]	---
191470086	C-3105-06	191470087	C-3105-06T	6	.146 [3.71]	.320 [8.13]	.305 [7.75]	.784 [191.91]	.980 [24.89]
191470088	C-3105-08	191470089	C-3105-08T	8	.173 [4.39]				
191470090	C-3105-10	---	---	10	.198 [5.03]				



PARTS ON TAPE

- NOTES:
- MATERIAL: COPPER (.040±.001 [1.02] THK.)
PLATING: ELECTRO-TIN (.0003 MIN).
 - BRAZED SEAM
 - WIRE SIZE: 12-10 AWG
4.0-6.0 MM²
 - "UL" LISTING #E32244
"CSA" LISTING #18689
 - ALL DIMENSIONS IN INCHES/[MM].
 - PARTS ARE ROHS COMPLIANT.
 - DIMS. SHOWN ARE FOR REFERENCE ONLY.

SYMBOLS	THIS DRAWING CONTAINS INFORMATION THAT IS PROPRIETARY TO MOLEX ELECTRONIC TECHNOLOGIES, LLC AND SHOULD NOT BE USED WITHOUT WRITTEN PERMISSION							
	DIMENSION UNITS		SCALE		CURRENT REV DESC: MIGRATION TO ECTR/NX			
∇ = 0	INCH/MM	NTS						
∇ = 0	GENERAL TOLERANCES (UNLESS SPECIFIED)							
∇ = 0		MM	INCH					
S = 0	4 PLACES	±	±	EC NO: 620268				
∇ = 0	3 PLACES	±	± 0.005	DRWN: ABENJAMINLW 2019/07/05				
∇ = 0	2 PLACES	± 0.13	± 0.01	CHK'D: DMYRICK 2019/07/08				
∇ = 0	1 PLACE	± 0.25	±	APPR: JMACNEIL 2019/07/10				
∇ = 0	0 PLACES	±	±	INITIAL REVISION:				
∇ = 0	ANGULAR TOL ± 0.5 °			DRWN: JJ 1984/11/28				
∇ = 0	DRAFT WHERE APPLICABLE MUST REMAIN WITHIN DIMENSIONS			APPR: JMACNEIL 2019/07/10				
∇ = 0	THIRD ANGLE PROJECTION		DRAWING	SERIES	DOCUMENT NUMBER	DOC TYPE	DOC PART	REVISION
	C-SIZE		19147	19147	191470083	PSD	000	A
	SEE TABLE		GENERAL MARKET		SHEET NUMBER			
					1 OF 1			