

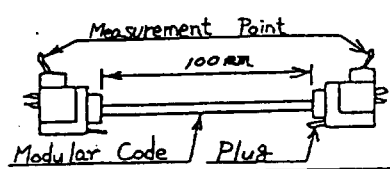
| COUNT | DESCRIPTION OF REVISIONS | BY | CHECKED | DATE | COUNT | DESCRIPTION OF REVISIONS | BY | CHECKED | DATE |
|-------|--------------------------|----|---------|------|-------|--------------------------|----|---------|------|
| △     |                          |    |         |      | △     |                          |    |         |      |
| △     |                          |    |         |      | △     |                          |    |         |      |

|                     |           |                 |                |                             |  |                |  |
|---------------------|-----------|-----------------|----------------|-----------------------------|--|----------------|--|
| APPLICABLE STANDARD |           |                 |                | APPLICABLE CABLES           |  |                |  |
| RATING              | VOLTAGE   | CONTACT No. 1~4 | AC 125 V<br>DC | IMPEDANCE FREQUENCY RANGE   |  | Ω (0~ Hz)      |  |
|                     | CURRENT   | CONTACT No. 1~4 | 0.5 A          | OPERATING TEMPERATURE RANGE |  | -25 °C ~ 60 °C |  |
|                     | POWER     |                 |                |                             |  |                |  |
|                     | SPECIALTY |                 |                |                             |  |                |  |

### SPECIFICATIONS

| NO. | ITEM                                     | CONDITIONS  | TEST STANDARD                  | MIN | MAX | UNITS | QT | AT |
|-----|--|---|--------------------------------|-----|-----|-------|----|----|
| 1   | DESIGN-MATERIAL-FINISH                   | ADC<br>Applicable Std. and DC 3-45425.  |                                | -   | -   | -     | ○  | ○  |
| 2   | MARKING                                  |   |                                | -   | -   | -     | ○  | ○  |
| 3   | INSULATION RESISTANCE                    | Must be over standard value at DC 100 V.  |                                | 100 | -   | MΩ    | ○  | ○  |
| 4   | CONTACT RESISTANCE<br>A CONTACT          | The voltage drop must be under the Std. value at DC 100 mA. (D)   |                                | -   | 200 | mΩ    | ○  | ○  |
|     | CONTACT                                  | The voltage drop must be under the Std. value at DC A.  |                                | -   | -   | mΩ    | -  | -  |
| 5   | DIELECTRIC WITHSTANDING VOLTAGE          | Must keep the AC 500 V for one minute.  |                                | -   | -   | -     | ○  | ○  |
| 6   | V SWR                                    | Must be under the Std. value at frequency - Hz.   |                                | -   | -   | -     | -  | -  |
| 7   | INSERTION LOSS                           | Must be under the Std. value at frequency - Hz.   |                                | -   | -   | dB    | -  | -  |
| 8   | LOW LEVEL CIRCUIT                        | The Contact Resistance must be under the Std. value at DC 20mV less and mA.   |                                | -   | -   | mΩ    | -  | -  |
| 9   | CONTACT ENGAGEMENT AND SEPARATION FORCES | Must be suitable for the Std. value at applicable gauge, gauge size   |                                | -   | -   | N     | -  | -  |
|     | MATING AND UNMATING FORCES               | Must be suitable for the Std. value.  |                                | -   | -   | N     | -  | -  |
| 10  | HUMIDITY                                 | Insulation resistance must be over the Std. value at 40 °C, 90~95% x 500 hours.   | at high humidity<br>JIS C 5402 | 1   | -   | MΩ    | ○  | -  |
|     |  |   | after high humidity<br>7.3     | 10  | -   | MΩ    | ○  | -  |
| 11  | VIBRATION                                | Must have no damage, crack and looseness of parts at Frequency range 10-55 Hz, Total amplitude 1.5 mm, - m/s² at 2h for 3 directions. | JIS C 5402<br>6.1              | -   | -   | -     | ○  | -  |
| 12  | SHOCK                                    | Must have no damage, crack and looseness of parts 490 m/s² at 3 times for 3 directions.   | JIS C 5402<br>6.2              | -   | -   | -     | ○  | -  |
| 13  | TEMPERATURE CYCLING                      | Must have no damage, crack and looseness of parts for -55~85 °C, 5 cycles.  | JIS C 5402<br>7.2 (B)          | -   | -   | -     | ○  | -  |
| 14  | DURABILITY<br>A CONTACT                  | Must be less than the Std. value after 200 times insertion and extraction at the condition described in above item No. 4.             |                                | -   | 220 | mΩ    | ○  | -  |
|     |  |   |                                | -   | -   | mΩ    | -  | -  |
| 15  | SALT SPRAY (CORROSION)                   | Must not have heavy corrosion after 5 x salt water spray for 48 hours.  | JIS C 5402<br>7.1              | -   | -   | -     | ○  | -  |

NOTE (D)

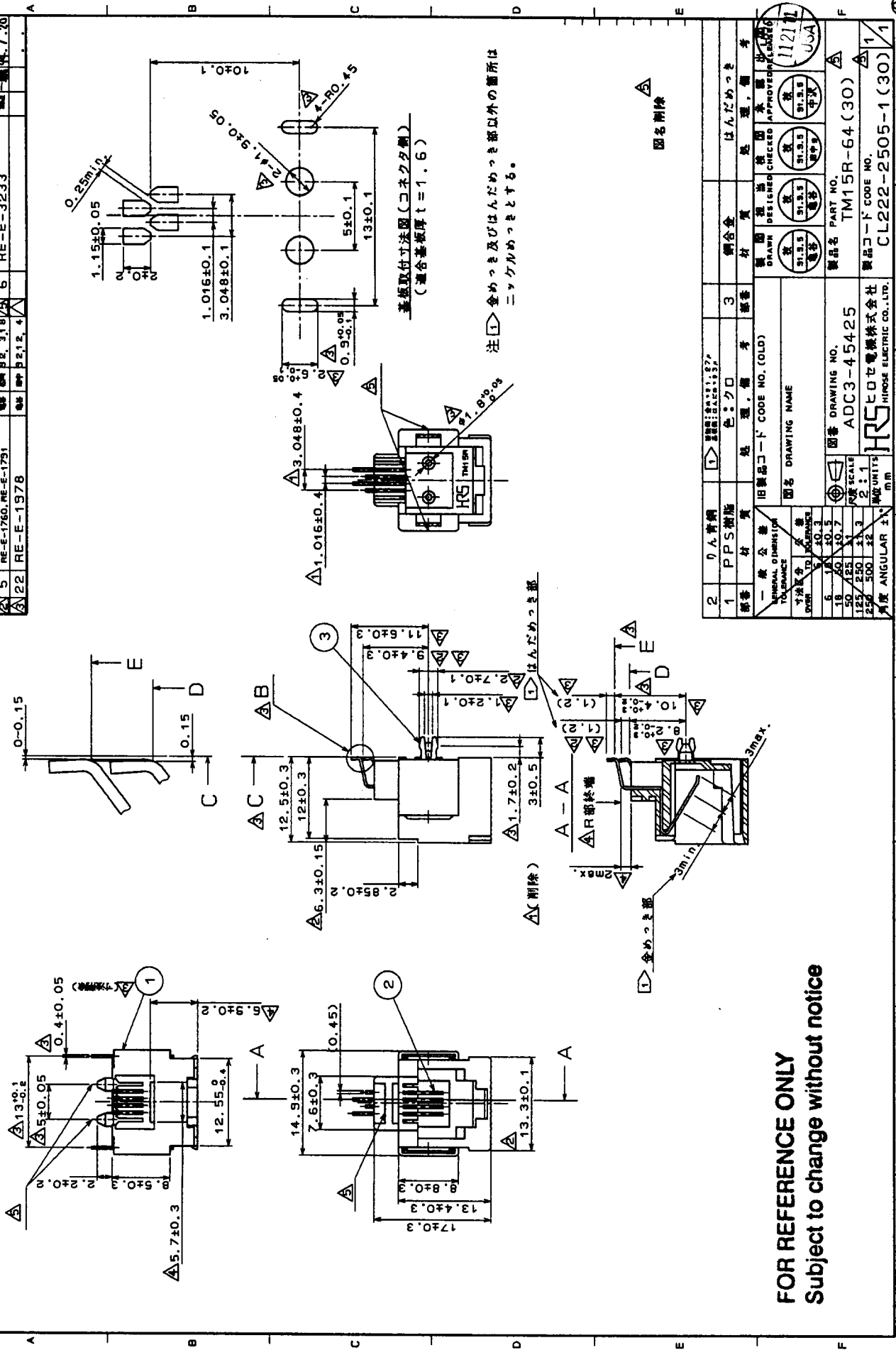


|  |          |             |                        |  |  |
|--|----------|-------------|------------------------|--|--|
| REMARKS                                      | APPROVED | A. Nakagawa | 93.2.13                |  |  |
|  | REVIEWED | T. Tanaka   | 93.2.13                |  |  |
|  | CHECKED  | S. Takayuki | 93.2.13                |  |  |
|  | DESIGNED | T. Kamaya   | 93.2.13                |  |  |
|  | DRAWN    | T. Kamaya   | 93.2.13                |  |  |
| DRAWING NO. SLC4-45425 - SPECIFICATION SHEET |          |             | PART NO. TM15R-64 (30) |  |  |
| CODE NO. CL222-2505-1-                       |          |             |                        |  |  |

TO  
Q2

|      |           |      |           |      |           |      |
|------|-----------|------|-----------|------|-----------|------|
| 訂正記号 |           | 訂正記号 | 訂正記号      | 訂正記号 | 訂正記号      | 訂正記号 |
| 3    | RE-E-1606 | 3    | RE-E-1760 | 4    | RE-E-2672 | 6    |
| 5    | RE-E-1760 | 4    | RE-E-1791 | 5    | RE-E-3233 |      |
| 22   | RE-E-1978 |      |           |      |           |      |

AB (10:1)



FOR REFERENCE ONLY  
Subject to change without notice

|  |       |   |                                |   |     |
|--|-------|---|--------------------------------|---|-----|
| 2  | PPS樹脂 | 1 | PPS樹脂                          | 3 | 銅合金 |
| 一般公差: 従来品に準ずる<br>公差範囲: 公差範囲はJIS B 3063に準ずる<br>寸法公差: 公差範囲はJIS B 3063に準ずる<br>形状公差: 公差範囲はJIS B 3063に準ずる<br>位置公差: 公差範囲はJIS B 3063に準ずる<br>表面粗さ: 公差範囲はJIS B 3063に準ずる<br>単位: mm<br>角度: ANGULAR ±      |       |   |                                |   |     |
| 図名: 旧製品コード CODE NO. (OLD)<br>図名: DRAWING NAME<br>製品名: TM15R-64 (30)<br>製品コード CODE NO.: ADC3-45425<br>製作者: HRS HIROSE ELECTRIC CO., LTD.<br>承認: 承認者: 承認日: 1121<br>承認者: 承認日: 承認者: 承認日: 承認者: 承認日: |       |   |                                |   |     |
| 図番: DRAWING NO.<br>ADC3-45425  |       |   | 製品名: PART NO.<br>TM15R-64 (30) |   |     |
| 製品コード CODE NO.<br>CL222-2505-1 (30)  |       |   | 承認者: 承認日: 承認者: 承認日: 承認者: 承認日:  |   |     |