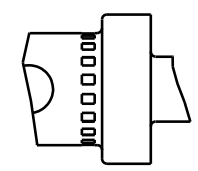
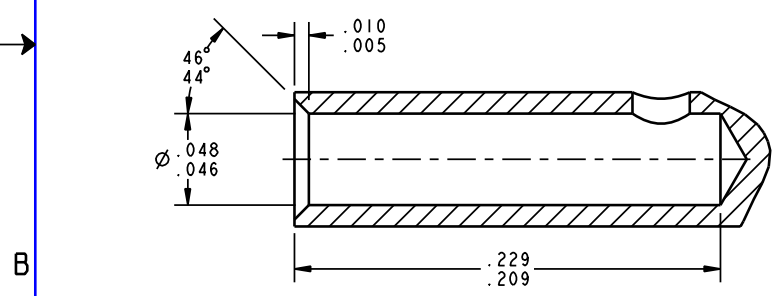
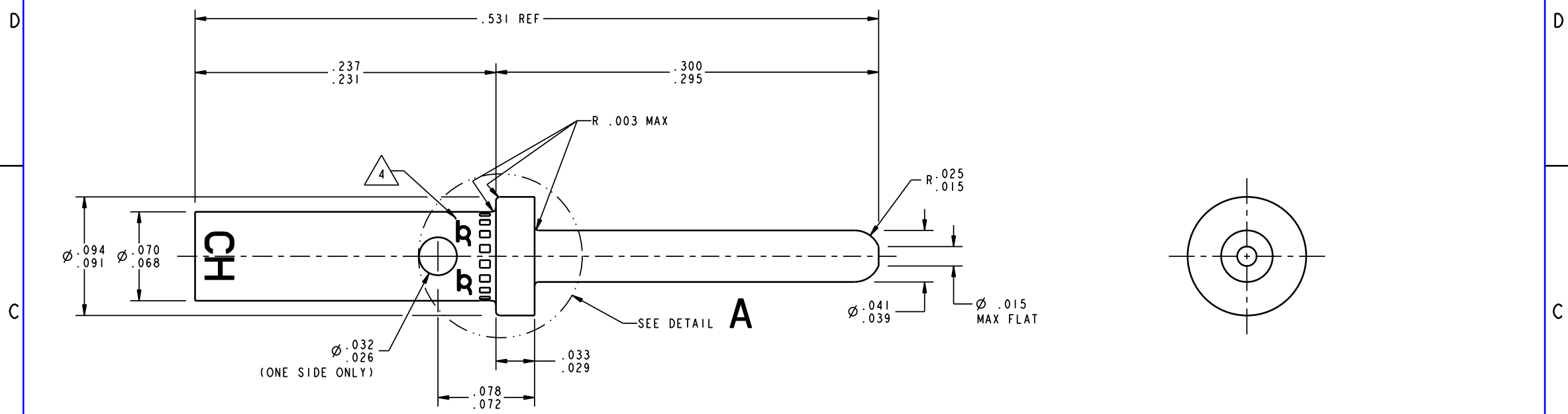


THIS IS ISSUED IN STRICT CONFIDENCE ON CONDITION THAT IT IS NOT USED AS A BASIS FOR MANUFACTURE OR SALE, AND THAT IT IS NOT COPIED, REPRINTED OR DISCLOSED TO A THIRD PARTY EITHER WHOLLY OR IN PART WITHOUT THE PRIOR WRITTEN CONSENT OF ITT CANON.

REV	DCR	DESCRIPTION	DATE	APPROVAL



ALTERNATE DETAIL "A"

NOTE: INDENTS ARE PERMITTED ON CRIMP BARREL, HOWEVER INDENTS MAY NOT EXCEED MAX CRIMP POT O.D. AND NO BURRS ARE ALLOWED.

NOTES: UNLESS OTHERWISE SPECIFIED

1. MATERIAL: CHROMEL
2. FINISH: NONE
3. ALL DIAMETERS TO BE CONCENTRIC WITH EACH OTHER WITHIN .003 T.I.R.
4. PARTS ACCEPTABLE WITH EITHER A PORTION OF OR ONE TRADEMARK ELIMINATED BY THE HOLE. PROVIDED ONE TRADEMARK IS IDENTIFIABLE.
5. CONTACT WILL ACCOMMODATE #20, #22 & #24 GAGE WIRES.
6. CRIMP CONTACT WITH AN M22520/1-01 CRIMP TOOL WITH AN M22520/1-04 LOCATOR.

ITT Cannon LLC 56 Technology Drive, IRVINE, CA 92618		WEIGHT DENSITY VOLUME	CRITICAL DIM ∇ 0 SPC. DIM ∇ 0 REV (UNLESS SHOWN OTHERWISE) ∇ 0
UNLESS OTHERWISE SPECIFIED: - DIMENSIONS AND TOLERANCES AS PER ASME Y14.5M-1994 - DIMENSIONS ARE IN INCHES AND FRACTIONS - REMOVE ALL BURRS AND SHARP EDGES .005 (0.13) MAX. - DO NOT SCALE DRAWING.	DRAWN: Giovanni Carachure CHECKED: Steve Nguyen APPROVED: Steve Nguyen	DATE: 12/9/16 DATE: 12/13/16 DATE: 12/13/16	SURFACE AREA REF PART NO: 030-1997-027
RoHS COMPLIANCE CODE NTC - not RoHS compliant ROC - RoHS not hi-temp ROH - RoHS & hi-temp (260°C) NOTE - REFER TO TABLE/NOTES	TOL DECIMALS .1 \pm .02 (0.51) .XX \pm .01 (0.25) .XXX \pm .005 (0.127) .XXXX \pm .0005 (0.0127)	TOL ANGLES ° \pm 1° SURFACE ROUGHNESS 63 (11.4) 63 (11.4)	SCALE: 7.000 CAGE CODE: 71468 DESCRIPTION: CONTACT, PIN KJ20-CHROMEL
ROH	3RD ANGLE PROJECTION	SIZE: C C SHEET: 1 / 1	PART NO: 030-1997-027 REV:

EXPORT CODE C

This document contains technical data that is subject to export controls under the Export Administration Act and Export Administration Regulations (15 CFR 730, et seq.). Any transfer of this data to non-US persons or to any location outside the United States must be in compliance with the Export Administration Regulations.