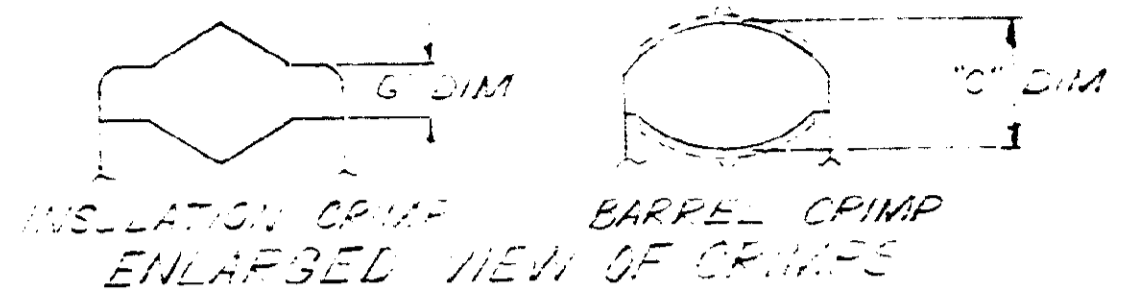
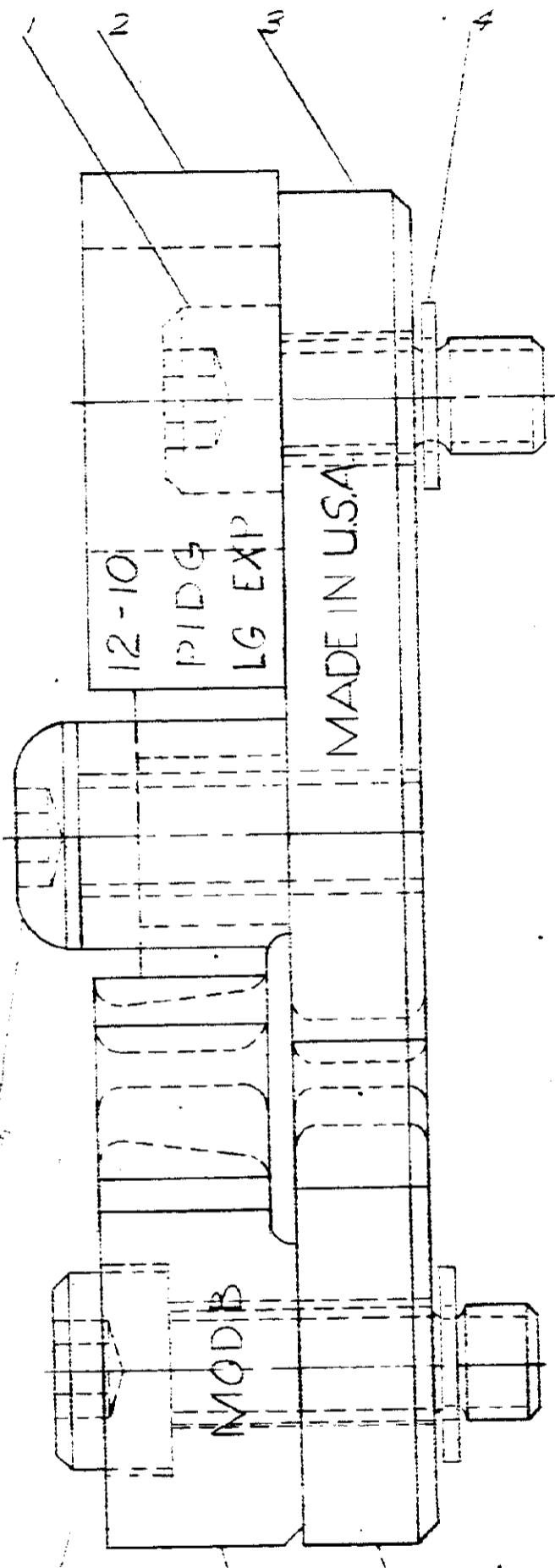
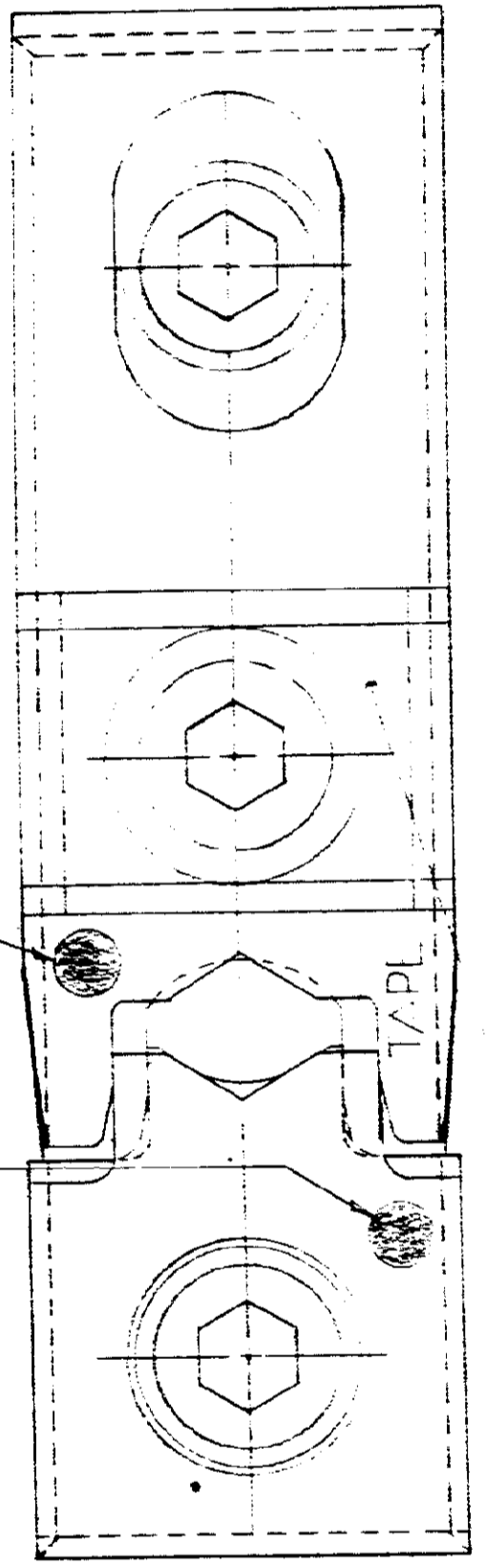
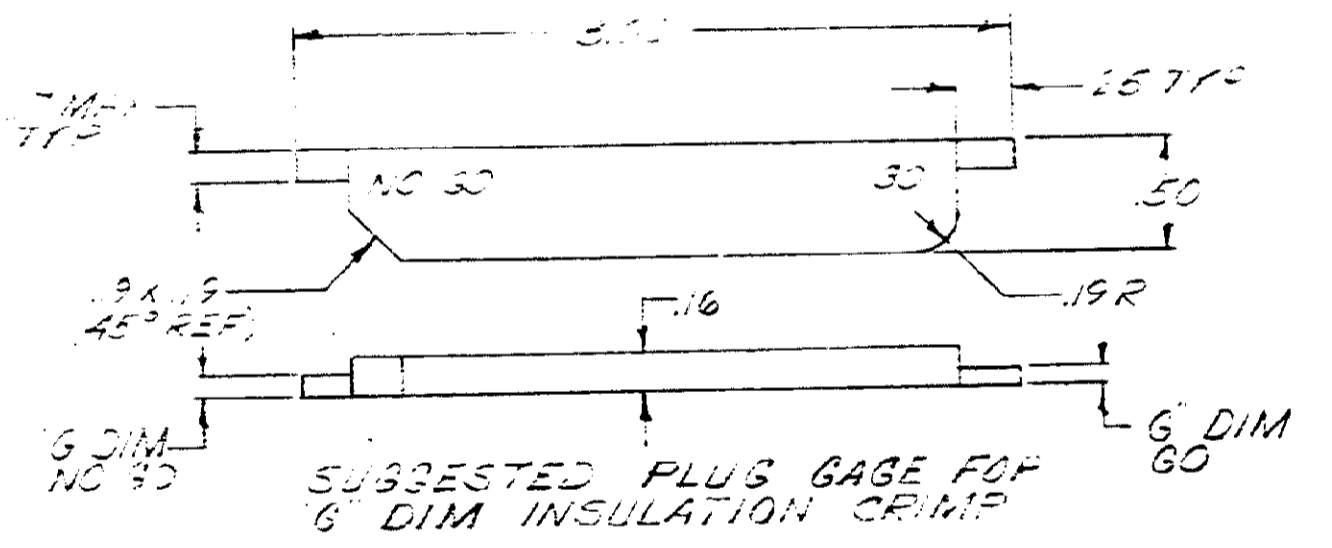
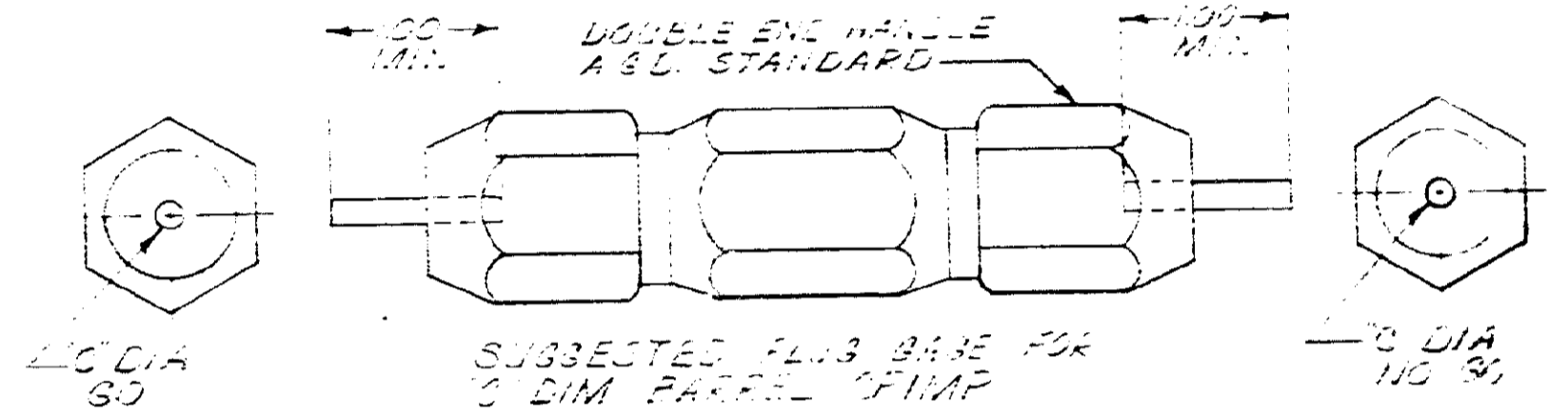


NUMBER 69897

PLUG GAGE DIMENSIONS APPLY WHEN TOOL IS  
 BOTTOMED BUT NOT UNDER PRESSURE.



S DIM AT P2 #1	C DIM
NO 80	NO 80
.064	.075



SUPERSEDED BY IS-2423

QTY	DESCRIPTION	ITEM NO.
1	307275-2 SADDLE	3
1	12-59577-8 SCREW 10-32 UNF-5/16 X .362 LONG	8
1	59781-5 SCREW SPECIAL	7
1	12-59619-2 ANVIL-INSULATION	6
1	59633-4 ANVIL	5
2	21-21043-3 PINS-RETAINING	4
1	59773-1 INDENTER	3
1	307275-2 INDENTER-INSULATION	2
1	59781-1 SCREW-SPECIAL	1

DESCRIPTION	NUMBER	NAME	REMARKS	ITEM NO.
REQUIRED PER ASSEMBLY				
© 1969 BY AMP INCORPORATED ALL RIGHTS RESERVED. AMP PRODUCTS COVERED BY PATENTS AND/OR PATENTS PENDING.				
DR. E. Shenfeld 12-12-69 CHK. J. J. J. 12-12-69 DE. J. J. J. 12-12-69 NAME: J. J. J. 12-12-69			CUSTOMER COPY REFERENCE ONLY <b>AMP</b> AMP INCORPORATED HARRISBURG, PENNA. USED ON 69875 WIRE - RANGE - INSULATION TYPE: 12-10 "CG" PIDG LG EXP TOLERANCE EXCEPT AS NOTED: 1" = .015" SCALE: 4-1 LOC: MGI NO: 69897 DIE ASSEMBLY MOD. B.	

REVISION	REVISION RECORD	ECN	DATE
1	REVISED BY IS-2423		12-29-69
2	REVISED		12-29-69

DIMENSIONS IN INCHES DO NOT SCALE PRINT

