

THIS PRODUCT MANUFACTURED WITH LEAD-FREE PROCESSING

DESIGNED & DIMENSIONED IN MILLIMETERS [INCHES]

DO NOT SCALE FROM THIS PRINT

TABLE 1		
ITEM	COMPONENT	-HF
1	HEX NUT	SMA-NUT-001-F
2	LOCK WASHER	SMA-LWAS-001-F
3	SUB ASSEMBLY	SUB-SMA-J-C-F-ST-BH1
4	PIN	SMA-SKT-001-H
5	OUTER FERRULE	SMA-FER-004-X

SMA-J-C-XX-ST-BH1S

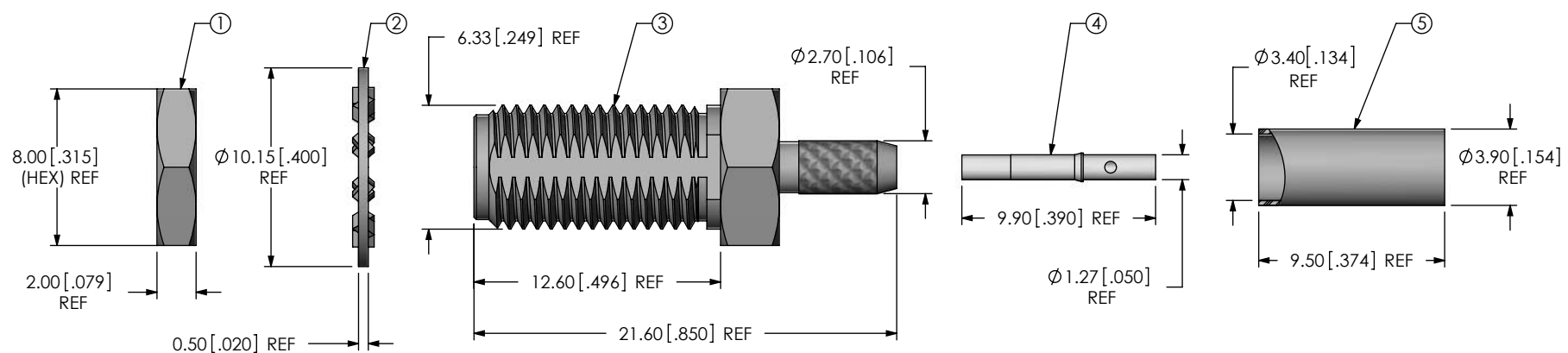
GENDER
-J: JACK

TYPE
-C: CABLE

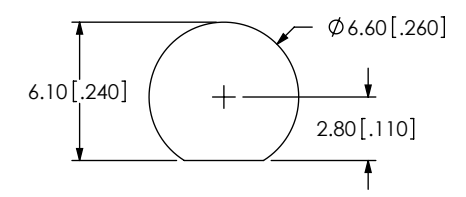
TERMINATION
-BH1S: BULKHEAD 1 (RG-316 CABLE, DOUBLE SHIELD)

ORIENTATION
-ST: STRAIGHT

PLATING SPECIFICATION
-HF: 30μ" GOLD CENTER CONTACT, 3μ" GOLD OUTER CONTACT (SEE TABLE 1)



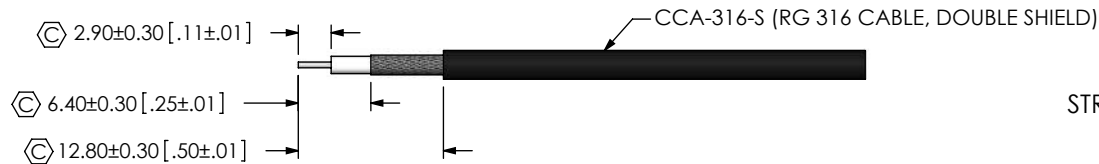
RECOMMENDED PANEL CUTOUT
3.80 [.150] MAX. PANEL THICKNESS



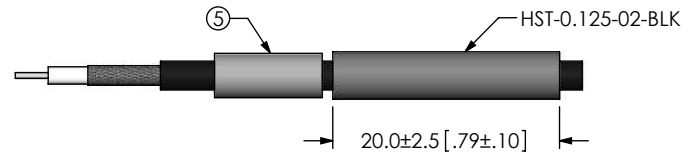
- NOTES:
- ① REPRESENTS A CRITICAL DIMENSION.
 - CENTER CONTACT PUSHOUT FORCE = 13.35 N [3 LB] MIN.
 - PRODUCT TO BE PACKAGED PER PACKAGING STANDARD CO-RF-WI-3040-M.
 - NUT, WASHER, PIN AND FERRULE TO BE PACKAGED SEPARATELY.

<p>UNLESS OTHERWISE SPECIFIED, DIMENSIONS ARE IN MILLIMETERS [INCHES]. TOLERANCES ARE:</p> <p>DECIMALS ANGLES</p> <p>X.X: ± 0.3 [.01] 5°</p> <p>X.XX: ± 0.13 [.005]</p> <p>X.XXX: ± 0.051 [.0020]</p>	<p>PROPRIETARY NOTE</p> <p>THIS DOCUMENT CONTAINS INFORMATION CONFIDENTIAL AND PROPRIETARY TO SAMTEC, INC. AND SHALL NOT BE REPRODUCED OR TRANSFERRED TO OTHER DOCUMENTS OR DISCLOSED TO OTHERS OR USED FOR ANY PURPOSE OTHER THAN THAT WHICH IT WAS OBTAINED WITHOUT THE EXPRESSED WRITTEN CONSENT OF SAMTEC, INC.</p>	<p>samtec</p> <p>520 PARK EAST BLVD, NEW ALBANY, IN 47150 PHONE: 812-944-6733 FAX: 812-948-5047 e-Mail: info@SAMTEC.com code: 55322</p>
<p>BY: SHERRY W 09/18/2013</p>		<p>SHEET 1 OF 2</p>

REVISION B



IN PROCESS 1
STRIP AND TIN INNER CONDUCTOR



IN PROCESS 2
ADD HEAT SHRINK TUBE AND FERRULE



IN PROCESS 3
SOLDER SIGNAL SOCKET

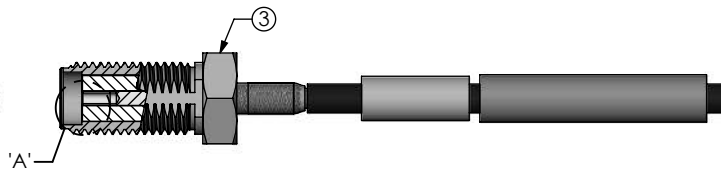
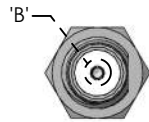


IN PROCESS 4
FLARE SHIELD

0.84 [.033] REF

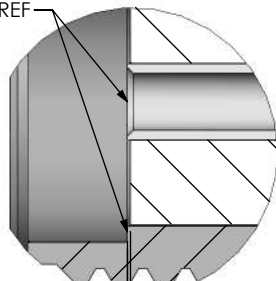


DETAIL 'B'
SCALE 7 : 1



IN PROCESS 5
ADD SUB ASSEMBLY

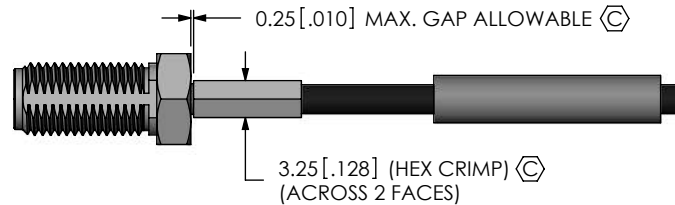
TIP OF CONTACT TO BE FLUSH WITH REFERENCE PLANE OR RECESSED 0.10 [.004] REF



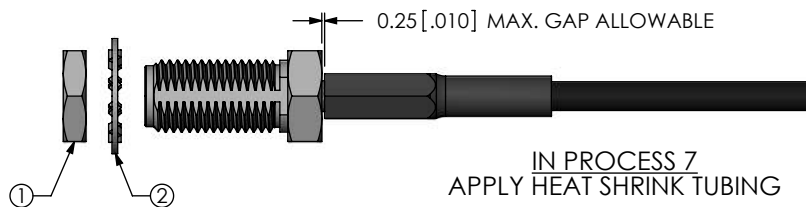
0.05 [.002] REF (TO INSULATOR)

REFERENCE PLANE

DETAIL 'A'
SCALE 8 : 1



IN PROCESS 6
CRIMP FERRULE
(USE RF CRIMP HAND TOOL # CAT-HT-126667-21 OR EQUIVALENT)



IN PROCESS 7
APPLY HEAT SHRINK TUBING

PROPRIETARY NOTE

THIS DOCUMENT CONTAINS INFORMATION CONFIDENTIAL AND PROPRIETARY TO SAMTEC, INC. AND SHALL NOT BE REPRODUCED OR TRANSFERRED TO OTHER DOCUMENTS OR DISCLOSED TO OTHERS OR USED FOR ANY PURPOSE OTHER THAN THAT WHICH IT WAS OBTAINED WITHOUT THE EXPRESSED WRITTEN CONSENT OF SAMTEC, INC.

DO NOT SCALE DRAWING

SHEET SCALE: 1.5:1



520 PARK EAST BLVD, NEW ALBANY, IN 47150
PHONE: 812-944-6733 FAX: 812-948-5047
e-Mail: info@SAMTEC.com code: 55322

DESCRIPTION:
SMA STR JACK BULKHEAD, RG 316, DOUBLE SHIELD, -50 OHM

DWG. NO. SMA-J-C-XX-ST-BH1S

BY: SHERRY W 09/18/2013 SHEET 2 OF 2