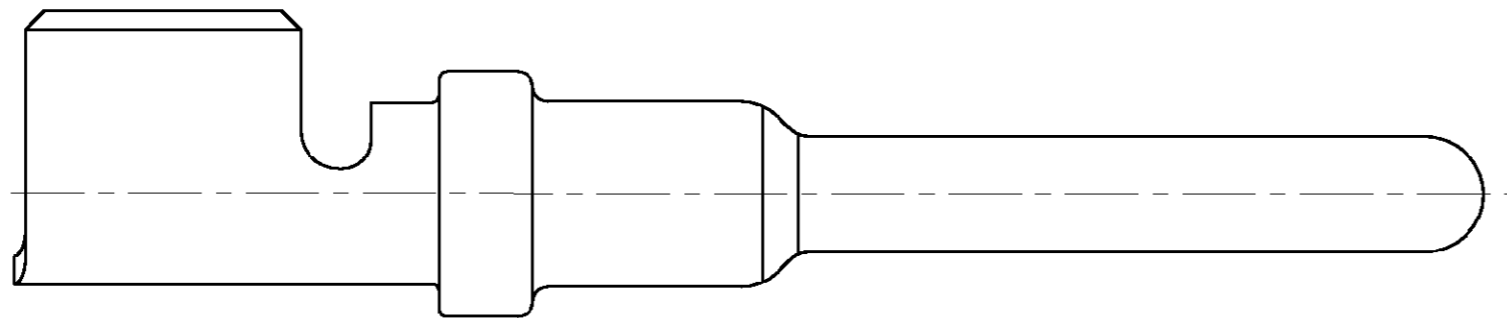
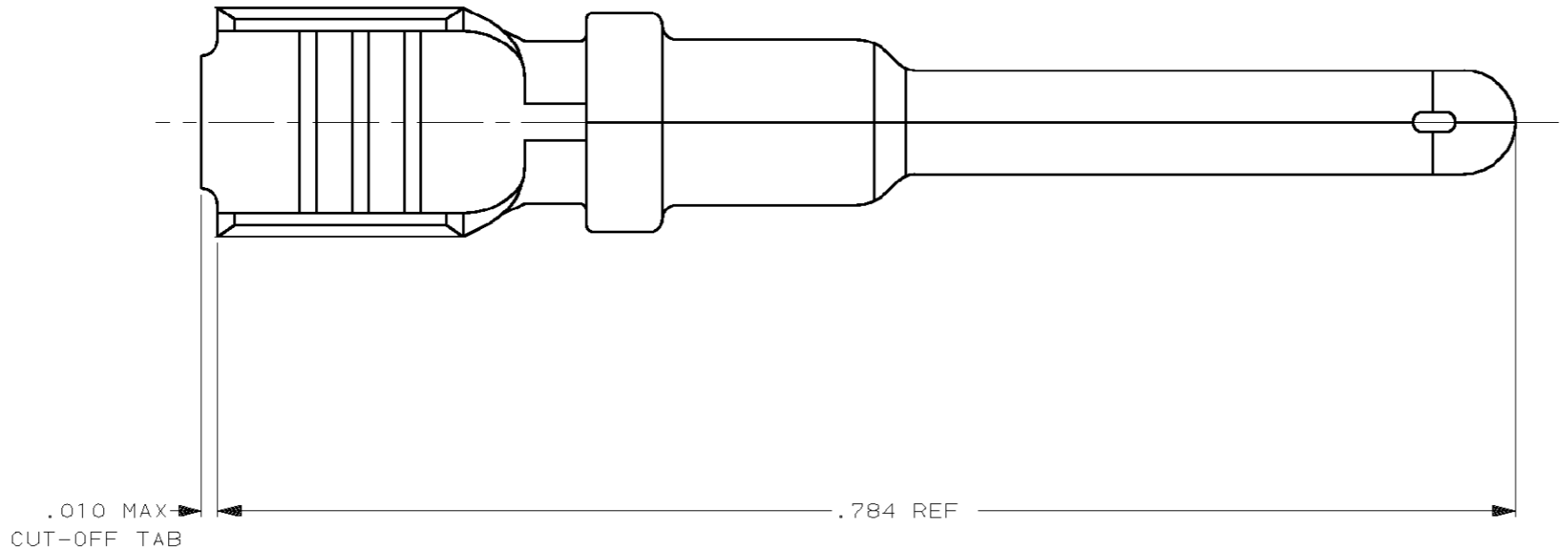


THIS DRAWING IS UNPUBLISHED. RELEASED FOR PUBLICATION, 19 .  
 © COPYRIGHT 19 BY AMP INCORPORATED. ALL INTERNATIONAL RIGHTS RESERVED.

| LOC | DIST | P | F | ZONE | LTR | DESCRIPTION          | DATE    | APPD  |
|-----|------|---|---|------|-----|----------------------|---------|-------|
| GE  | 33   |   |   |      | 0   | REL PER PR# 99-7     | 2-16-99 | PC WL |
|     |      |   |   |      | A   | REV PER OK40-0013-01 | 24AUG01 | AG MT |



1. WIRE RANGE: 18-14 AWG

| DESCRIPTION                     | FINISH | PART NUMBER |
|---------------------------------|--------|-------------|
| LOOSE PIECE VERSION OF 638112-3 | NICKEL | 776298-2    |
| LOOSE PIECE VERSION OF 638112-1 | GOLD   | 776298-1    |

|   |                        |            |                  |  |
|---|------------------------|------------|------------------|--|
| DO NOT SCALE PRINT.<br>UNLESS SPECIFIED<br>DIMENSIONS IN INCHES<br>TOLERANCES ON :<br>2 PLC DEC ± .02<br>3 PLC DEC ± .005<br>ANGLES ± - | DR                     | P. COLLINS | 2-17-99          | <b>AMP</b> AMP Incorporated<br>Harrisburg, PA 17105-3608<br><br>NAME<br>PIN CONTACT, WIRE-TO-WIRE<br>LOOSE PIECE |
|   | CHK                    | W. LONG    | 2-17-99          |  |
|   | APPD                   | G. MARPOE  | 2-17-99          |  |
|   | APPD                   | -          | -                |  |
| MATERIAL  | 0.014 THK COPPER ALLOY |            | PRODUCT SPEC     | -  |
| FINISH  | -                      |            | APPLICATION SPEC | -  |
| WEIGHT  |                        | -          | SCALE            | 10:1   |
| SIZE  |                        | C          | CAGE CODE        | 00779  |
| DRAWING NO  |                        | C=776298   |                  | SHEET  |
|   |                        |            |                  | 1 OF 1   |

THIS DRAWING IS A CONTROLLED DOCUMENT FOR AMP INCORPORATED. IT IS SUBJECT TO CHANGE AND THE CONTROLLING ENGINEERING ORGANIZATION SHOULD BE CONTACTED FOR THE LATEST REVISION.