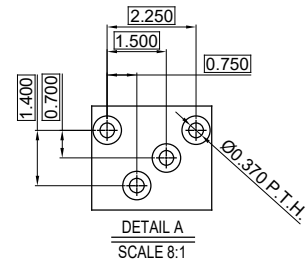
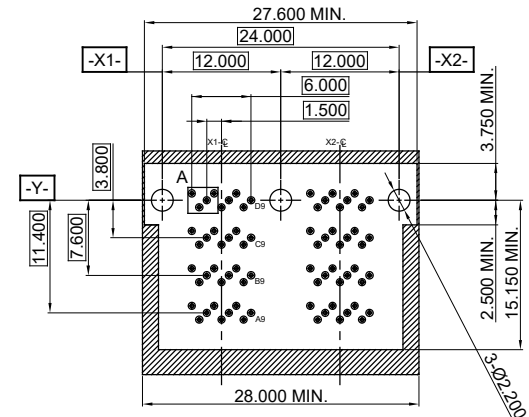
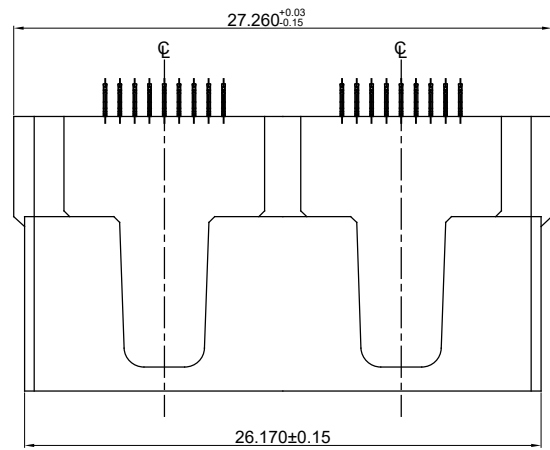
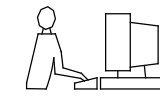


TOLERANCES UNLESS OTHERWISE SPECIFIED	
.X	±0.25
.XX	±0.15
.XXX	±0.10

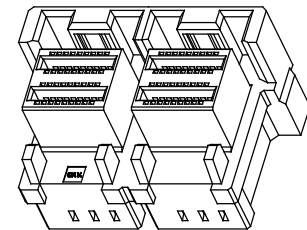
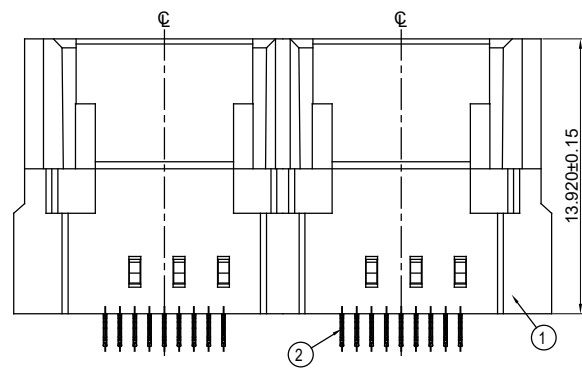
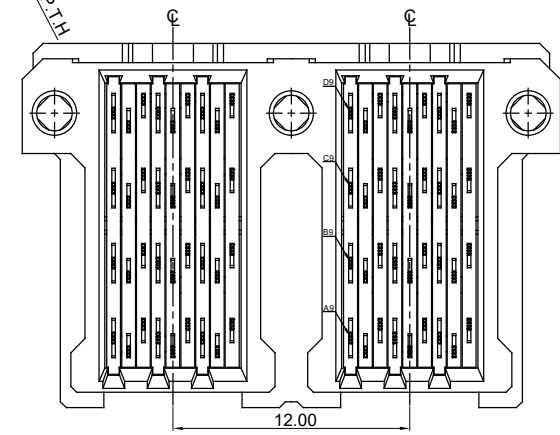
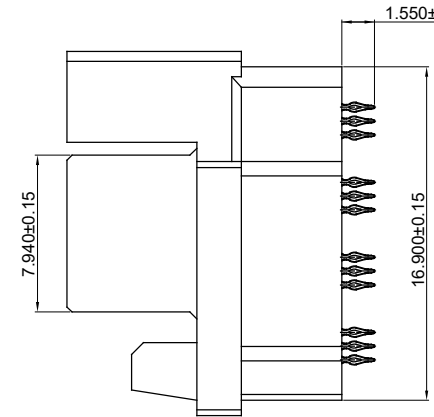
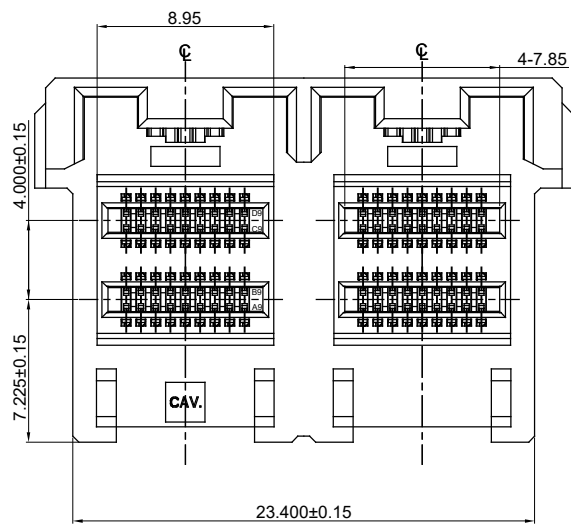
THIS IS A C.A.D. GENERATED DRAWING
DO NOT MAKE MANUAL REVISIONS TO MASTER.



NOTES:

MATERIAL:
HOUSING:
CONTACT:

L.C.P GLASS REINFORCED, UL-94V-0
COPPER ALLOY
30 μ" GOLD PLATING ON CONTACT AREA
MATTE TIN PLATING 20-120μ" ON SOLDER TAIL OVER
NICKEL 50-150μ" UNDER PLATING.



NO.	DESCRIPTION	QTY.	MATERIAL	FINISH/COLOR
2	CONTACT	72	COPPER ALLOY	SEE NOTES
1	INSULATOR	1	L.C.P SERIES, UL94 V-0	-

**MINI SAS HD EXTERNAL, VERTICAL PRESS FIT,
72 CONTACTS, FEMALE**

RoHS COMPLIANT
THIS SERIES FULLY CONFORMS TO
THE EUROPEAN UNION DIRECTIVES
2011/65/EU FOR RoHS COMPLIANCE.

EDAC
EDAC INC
TORONTO, ONTARIO
CANADA
YOUR CONNECTION TO QUALITY & SERVICE

THESE DRAWINGS AND SPECIFICATIONS
ARE THE PROPERTY OF EDAC INC., AND
SHALL NOT BE REPRODUCED, OR COPIED
OR USED AS THE BASIS FOR THE
MANUFACTURE OR SALE OF APPARATUS
WITHOUT WRITTEN PERMISSION.

ACAD REFERENCE NO.: 903-072-231-002	
DRAWN: W.T	DATE: JULY.03 /2018
CHECKED:	DATE:
SCALE: N.T.S	SHEET 1 OF 1
DRAWING NUMBER: 903-072-231-002	ISSUE
PART NUMBER: 903-072-231-002	1