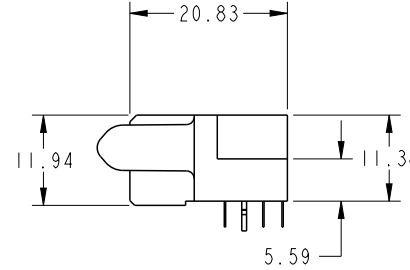
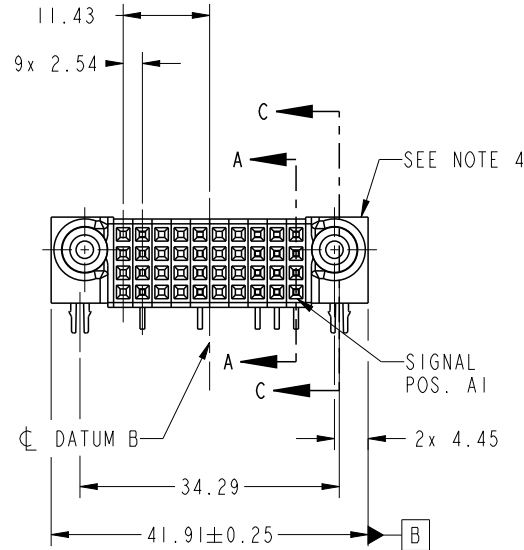


|             |      |        |    |   |   |   |   |   |   |   |   |   |    |
|-------------|------|--------|----|---|---|---|---|---|---|---|---|---|----|
| PRODUCT NO. | ROWS | SIGNAL |    |   |   |   |   |   |   |   |   |   |    |
|             |      | E2     | 10 | 9 | 8 | 7 | 6 | 5 | 4 | 3 | 2 | 1 | E1 |
| 51915-525LF | D    | ⊙      | X  | H | X | X | H | X | X | H | H | H | ⊙  |
|             | C    | ⊙      | X  | X | X | X | X | X | G | G | G | ⊙ |    |
|             | B    | ⊙      | X  | X | X | X | X | X | F | F | F | ⊙ |    |
| A           | A    | ⊙      | X  | E | X | X | E | X | E | E | ⊙ | ⊙ |    |

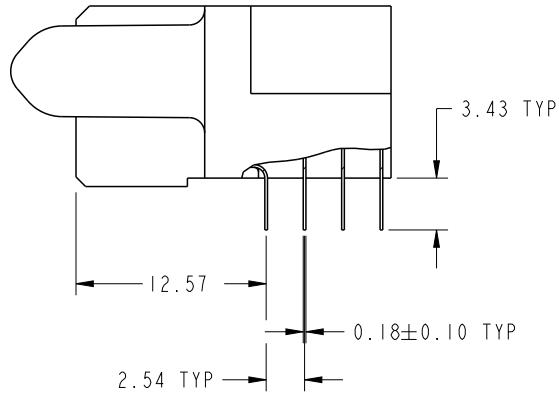


| CODE | DIM "M" MATING LENGTH | CONTACT TYPE |
|------|-----------------------|--------------|
| H    | [N/A]                 | SIGNAL       |
| G    | [N/A]                 | SIGNAL       |
| F    | [N/A]                 | SIGNAL       |
| E    | [N/A]                 | SIGNAL       |
| HA   | [N/A]                 | HOLD-DOWN    |
| X    | OMITTED               |              |

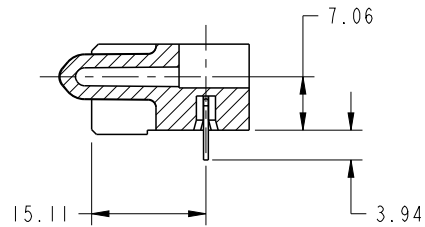
|               |  |                                       |       |       |             |                 |                    |                |          |          |                        |     |          |              |
|---------------|--|---------------------------------------|-------|-------|-------------|-----------------|--------------------|----------------|----------|----------|------------------------|-----|----------|--------------|
| spec ref      |  | SEE NOTES                             |       | dr    | Fang Qian   | 2016/03/29      | projection<br>     | MM<br>←→       | size     | A4       | scale                  | 1:1 |          |              |
| tolerance std |  | TOLERANCES UNLESS OTHERWISE SPECIFIED |       | eng   | Fang Qian   | 2016/03/31      |                    |                | ecn no   | -        | rel level              |     |          | Released     |
| SEE NOTES     |  |                                       |       | chr   | Fancy Zhang | 2016/03/31      |                    |                |          |          | product family         |     |          | PwrBlade     |
| surface       |  | linear                                | 0.X   | ±0.50 | appr        | Pei-Ming Zheng  | 2016/03/31         | product family |          | PwrBlade | rel level              |     | Released |              |
|               |  |                                       | 0.XX  | ±0.25 |             | Amphenol<br>FCi | title              |                | 40S      | dwg no   | 51915-525              |     | rev      | A            |
|               |  |                                       | 0.XXX | ±0.10 |             |                 | R/A STB RECEPTACLE |                | cat. no. |          | Product - Customer Drw |     |          | sheet 1 of 4 |
|               |  | angular                               | 0°    | ±2°   |             |                 |                    |                |          |          |                        |     |          |              |

PRODUCT NUMBER

51915-525LF



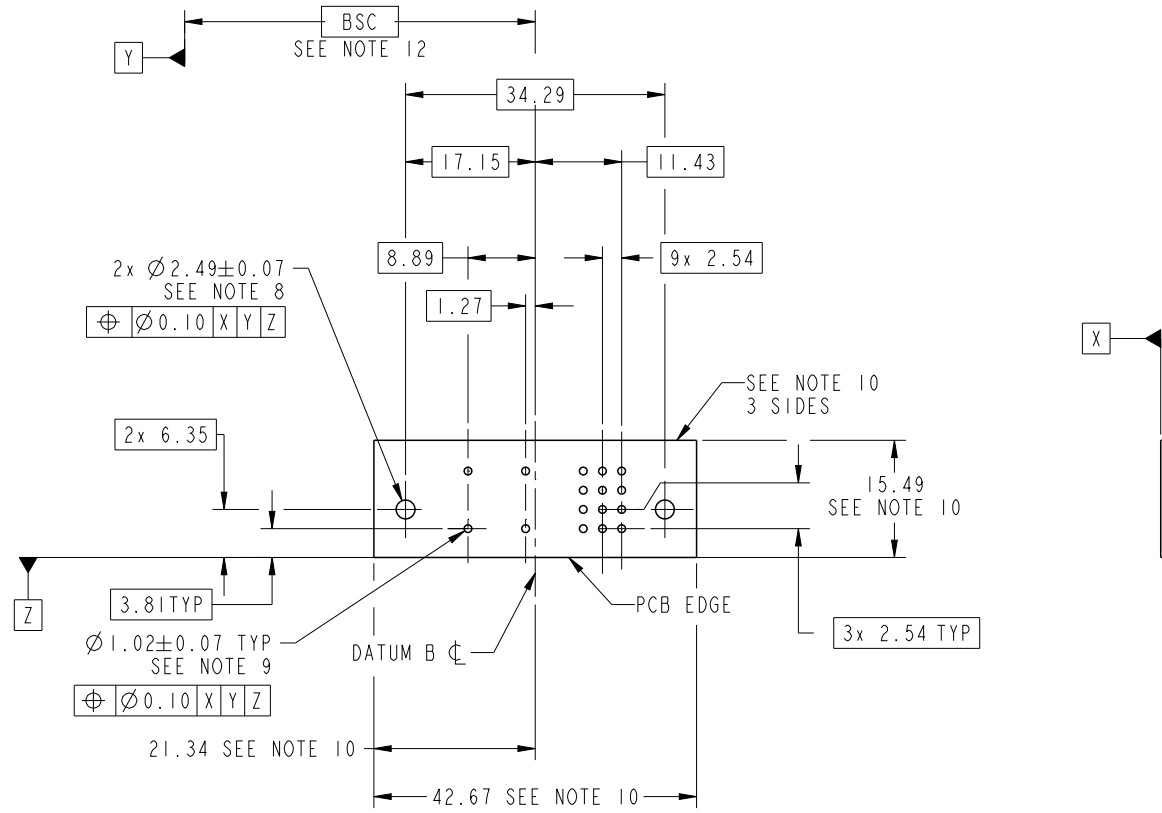
BROKEN-OUT SECTION A-A  
SCALE 2:1



SECTION C-C

|               |  |                                       |            |  |                |            |                        |        |              |           |          |     |
|---------------|--|---------------------------------------|------------|--|----------------|------------|------------------------|--------|--------------|-----------|----------|-----|
| spec ref      |  | SEE NOTES                             |            | dr   | Fang Qian      | 2016/03/29 | projection<br>         | MM<br> | size         | A4        | scale    | 1:1 |
| tolerance std |  | TOLERANCES UNLESS OTHERWISE SPECIFIED |            | eng  | Fang Qian      | 2016/03/31 |                        |        | ecn no       | -         |          |     |
| SEE NOTES     |  |                                       |            | chr  | Fancy Zhang    | 2016/03/31 |                        |        |              |           |          |     |
| surface       |  | linear                                | 0.X ±0.50  | appr   | Pei-Ming Zheng | 2016/03/31 | product family         |        | PwrBlade     | rel level | Released |     |
|               |  |                                       | 0.XX ±0.25 | <b>Amphenol FCI</b><br>title 40S<br>R/A STB RECEPTACLE<br>cat. no. |                |            | dwg no                 |        | 51915-525    |           | rev      | A   |
|               |  | angular                               | 0° ±2°     |  |                |            | Product - Customer Drw |        | sheet 2 of 4 |           |          |     |

PRODUCT NUMBER  
51915-525LF



RECOMMENDED PCB LAYOUT

|               |  |                                       |             |                 |                |            |                        |          |          |              |          |     |
|---------------|--|---------------------------------------|-------------|-----------------|----------------|------------|------------------------|----------|----------|--------------|----------|-----|
| spec ref      |  | SEE NOTES                             |             | dr              | Fang Qian      | 2016/03/29 | projection<br>         | MM<br>←→ | size     | A4           | scale    | 1:1 |
| tolerance std |  | TOLERANCES UNLESS OTHERWISE SPECIFIED |             | eng             | Fang Qian      | 2016/03/31 |                        |          | ecn no   | -            |          |     |
| SEE NOTES     |  |                                       |             | chr             | Fancy Zhang    | 2016/03/31 |                        |          |          |              |          |     |
| surface       |  | linear                                | 0.X ±0.50   | appr            | Pei-Ming Zheng | 2016/03/31 | product family         |          | PwrBlade | rel level    | Released |     |
|               |  |                                       | 0.XX ±0.25  | Amphenol<br>FCi |                | title      | 40S                    |          | dwg no   | 51915-525    |          | rev |
|               |  |                                       | 0.XXX ±0.10 |                 |                |            | R/A STB RECEPTACLE     |          |          |              | A        |     |
|               |  | angular                               | 0° ±2°      |                 |                | cat. no.   | Product - Customer Drw |          |          | sheet 3 of 4 |          |     |

PRODUCT NUMBER

51915-525LF

NOTES:

1. DIMENSIONS AND TOLERANCES ARE IN ACCORDANCE WITH ASME Y14.5M, 1994 UNLESS OTHERWISE SPECIFIED.

CONNECTOR NOTES:

2. HOUSING MATERIAL: UL 94 V-0 GLASS FILLED HIGH-TEMP THERMOPLASTIC

POWER CONTACT MATERIAL: COPPER ALLOY  
SIGNAL PIN MATERIAL: COPPER ALLOY

3. SEE FCI PLATING SPEC 10064183.

4. MANUFACTURER'S NAME, DATE CODE AND OPTIONAL P/N TO APPEAR ON THIS SURFACE. THE MARK CAN BE OMITTED IF THERE IS NOT ENOUGH SPACE ON THIS SURFACE.

5. PRODUCT SPECIFICATION GS-12-149.  
APPLICATION SPECIFICATION BUS-20-067.

6. PACKAGED IN TRAYS.

PCB NOTES:

7. ALL HOLE DIAMETERS ARE FINISHED HOLE SIZE.

8. MOUNTING HOLES, WHERE APPLICABLE, ARE UNPLATED.

9.  $\varnothing 1.151 \pm 0.025$  DRILLED HOLES PLATED WITH  
0.008 MIN SnPb OR Sn OVER 0.03  
TO 0.08 Cu PLATING TO ACHIEVE  
 $\varnothing 1.02 \pm 0.07$  HOLE.

10. CONNECTOR KEEP-OUT ZONE.

11. THE VOID CORING IN BETWEEN POWER MODULES, SIGNAL MODULES AND END MODULES ARE OPTIONAL AND THE SHAPE MAY BE DIFFERENT FOR OPTIMIZE THE MOLDING PROCESS. THE VOID CORING WILL NOT EFFECT TO PRODUCT FUNCTION.

12. DATUM AND BASIC DIMENSIONS ARE ESTABLISHED BY CUSTOMER.

|               |       |                                       |  |                 |                |                           |                |          |              |           |          |     |
|---------------|-------|---------------------------------------|--|-----------------|----------------|---------------------------|----------------|----------|--------------|-----------|----------|-----|
| spec ref      |       | SEE NOTES                             |  | dr              | Fang Qian      | 2016/03/29                | projection<br> | MM<br>   | size         | A4        | scale    | 1:1 |
| tolerance std |       | TOLERANCES UNLESS OTHERWISE SPECIFIED |  | eng             | Fang Qian      | 2016/03/31                |                |          | ecn no       | -         |          |     |
| SEE NOTES     |       |                                       |  | chr             | Fancy Zhang    | 2016/03/31                |                |          |              |           |          |     |
| surface       |       |                                       |  | appr            | Pei-Ming Zheng | 2016/03/31                | product family | PwrBlade |              | rel level | Released |     |
| linear        | 0.X   | $\pm 0.50$                            |  | Amphenol<br>FCi | title          | 40S<br>R/A STB RECEPTACLE |                | dwg no   | 51915-525    |           | rev      | A   |
|               | 0.XX  | $\pm 0.25$                            |  |                 |                |                           |                |          |              |           |          |     |
|               | 0.XXX | $\pm 0.10$                            |  |                 |                |                           |                |          |              |           |          |     |
| angular       | 0°    | $\pm 2^\circ$                         |  | cat. no.        |                | Product - Customer Drw    |                |          | sheet 4 of 4 |           |          |     |