

Qwiic MP3 Trigger Hookup Guide

Introduction

Sometimes you just need to play an MP3 file. Whether it's a sound track as you enter the room or a pirate cackling when a dollar gets donated to the kid's museum. The Qwiic MP3 Trigger takes care of all the necessary bits, all you need to do is send a simple I²C command and listen.



SparkFun Qwiic MP3 Trigger
DEV-19030

Product Showcase: Going Turbo





Required Materials

The Qwiic MP3 Trigger does need a few additional items for you to get started, shown below. However, you may already have a few of these items, so feel free to modify your cart as necessary.



Hamburger Mini Speaker

○ COM-14023



USB 3.1 Cable A to C - 3 Foot

● CAB-14743



microSD Card - 1GB (Class 4)

● COM-15107



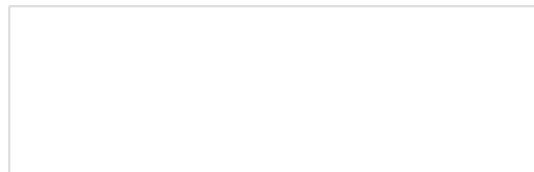
USB Wall Charger - 5V, 1A (Black)

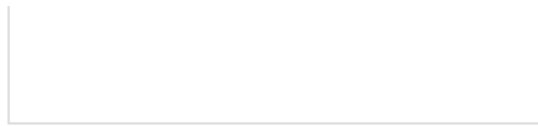
● TOL-11456

Note: If you want to add hardware connections for the triggers, you will probably some soldering equipment, hook-up wire, and some momentary buttons. Additionally, if you wish to interface with the board using a microcontroller, you should also grab a RedBoard Qwiic and some Qwiic cables.

Suggested Reading

If you're unfamiliar with switches, jumper pads, or I²C be sure to checkout some of these foundational tutorials.





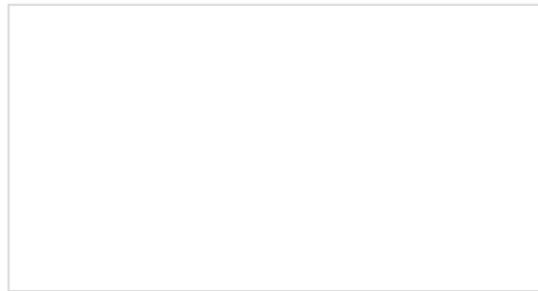
Logic Levels

Learn the difference between 3.3V and 5V devices and logic levels.



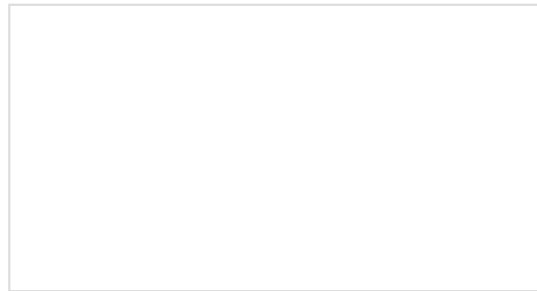
Button and Switch Basics

A tutorial on electronics' most overlooked and underappreciated component: the switch! Here we explain the difference between momentary and maintained switches and what all those acronyms (NO, NC, SPDT, SPST, ...) stand for.



I2C

An introduction to I2C, one of the main embedded communications protocols in use today.



How to Work with Jumper Pads and PCB Traces

Handling PCB jumper pads and traces is an essential skill. Learn how to cut a PCB trace, add a solder jumper between pads to reroute connections, and repair a trace with the green wire method if a trace is damaged.



The Qwiic Keypad utilizes the Qwiic connect system. We recommend familiarizing yourself with the **Logic Levels** and **I²C** tutorials (above) before using it. Click on the banner above to learn more about our Qwiic products.

SparkFun's Qwiic Connect System



Hardware Overview

Electrical Characteristics

The Qwiic MP3 Trigger is designed to operate at **3.3V** and must not be powered above **3.6V** as this is the maximum operating voltage of microSD cards. The **5V** power from the USB C connector tied to a robust AP2112 3.3V voltage regulator that can source up to **600mA** for the board. Otherwise, the board can also be powered through the Qwiic connector.

Maximum Operating Voltages

All I/O pins are **5V** tolerant but the board must but powered at **3.3V**.

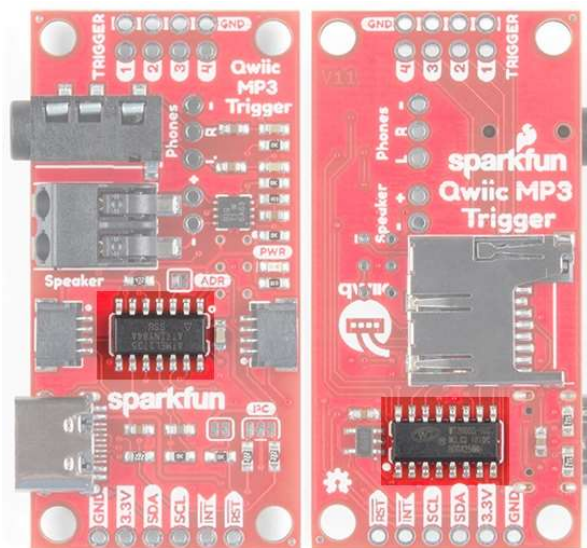
Recommended Operating Voltages

All I/O pins are designed to function at **3.3V**. The board consumes **35mA** at 3.3V in standby and can consume over **400mA** when driving at **8 Ohm** speaker at max volume.

Note: The Qwiic MP3 Trigger can be powered through either the USB C cable or the Qwiic connector when used in conjunction with the RedBoard Qwiic. However, when using the Qwiic connection make sure that the **3.3V** line can source enough current for the amplifier.

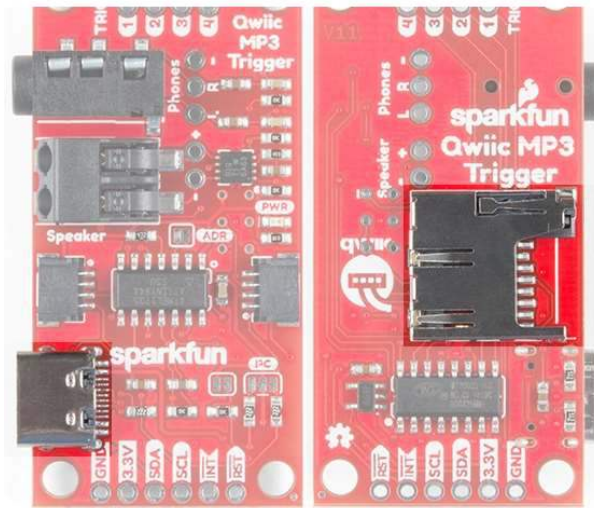
MP3 and ATtiny84

At the heart of the Qwiic MP3 Trigger is the WT2003S MP3 decoder IC. This IC reads MP3s from the microSD card and will automatically mount the SD card as a jump drive if USB is detected. The ATtiny84A receives I²C commands and controls the MP3 decoder.



SD and USB

The SparkFun Qwiic MP3 Trigger works with 512MB to 32GB cards formatted in FAT32. We recommend the SparkFun 1GB MicroSD Card because it's a good mix of low-cost and good performance for MP3 playing. Up to 255 songs can be loaded onto Qwiic MP3 Trigger.



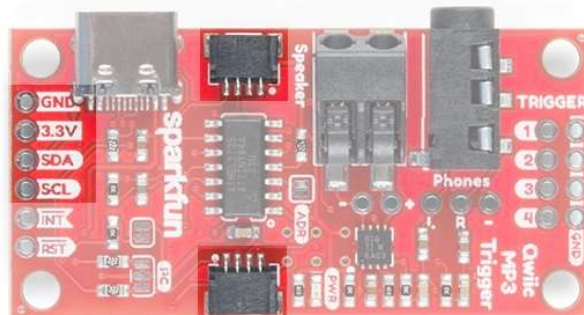
The easiest way to add and remove MP3s to the Qwiic MP3 Trigger is to attach a USB C cable. This will enumerate the microSD card as a jump drive making it extremely easy to access the files on the card. Alternatively, if you don't want to use USB, you can eject the microSD card and read/write to it using a normal USB SD adapter.

Troubleshooting Tip: While USB is connected to a computer, MP3 playing is disabled. However, as long as D+/D- are not connected, you can power the board over USB from a USB wall adapter or power bank and still use the Qwiic MP3 Trigger normally.

Note: If you are moving just a few MP3 files, the USB C cable will work perfectly fine. However, if you need to move large amounts of data to the SD card, we suggest a normal USB SD adapter. The write speed to the SD card through a USB C cable is slower than a few MBs per second.

Qwiic Connectors

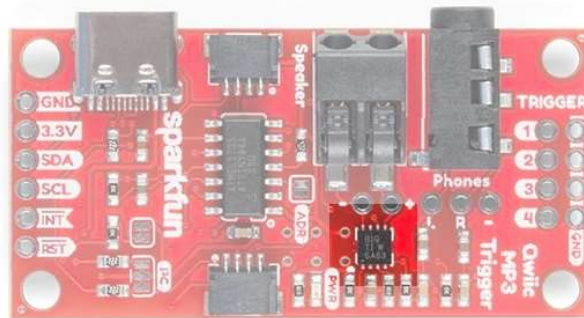
The Qwiic MP3 Trigger from SparkFun includes two Qwiic connectors to make daisy chaining this music player with a large variety of I²C devices. Checkout Qwiic for your next project.



The I²C pins broken out on the board are tied directly to the Qwiic connectors.

Audio Amplifier

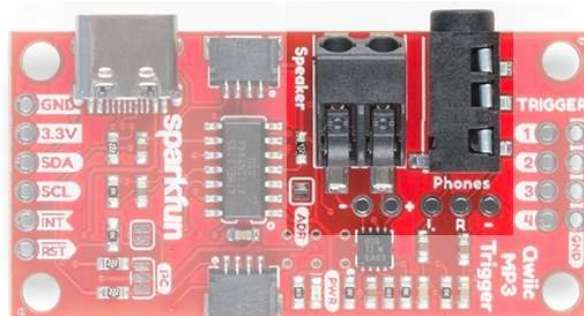
The speaker is boosted by a **Class-D mono amplifier** capable of outputting up to **1.4W**. What does 1.4W mean? It's incredibly loud; great for making sure your mech effects are heard on the *con floor (i.e. `_Comic_ - con`, `_Def_ - con`, etc.) and wonderful for annoying your officemates. Both outputs have volume controlled by the `SET_VOLUME` command and is selectable between 32 levels. Additionally, there are PTH holes beside both connectors if a soldered connection is preferred.



Note: The volume can be adjusted in software using the `SET_VOLUME 0x07` command (see *Command Set* section). The volume setting is saved to NVM (non-volatile memory) and loaded at power on.

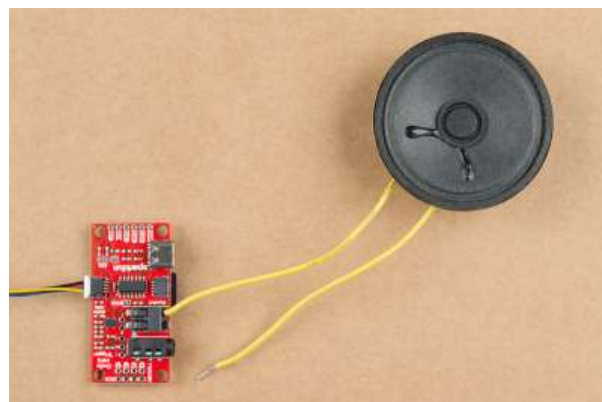
Audio Outputs

A standard 3.5mm audio jack is provided making it easy to play your tunes over headphones or amplified desktop speakers like our Hamburger Speaker or any other amplifier.



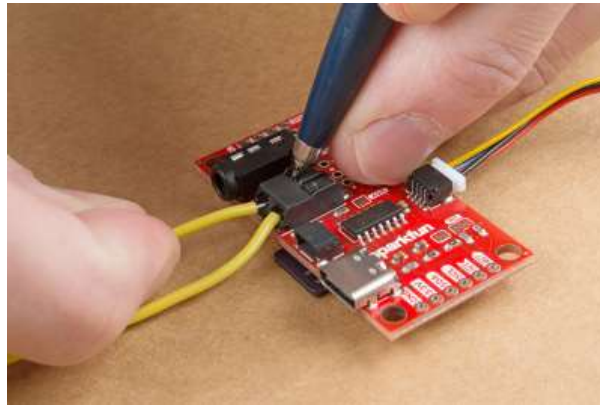
A poke-home connector labeled **Speaker** is also provided in parallel to the 3.5mm jack. This is a friction fit type connector; simply push stranded or solid core wire (**22AWG** or larger) into the hole and the connector will grip the wire.

To use an external speaker, solder two wires onto the speaker and insert the wires into the poke home connector.



Wire inserted into the poke home connector.

To remove, push *down* on the tab with a ballpoint pen and gently pull on the wire.



Using pen to remove wire from poke home connector.

Jumpers

The Qwiic MP3 Trigger has three jumpers shown below:



The default 7-bit I²C address of the Qwiic MP3 Trigger is $0x37$. The **ADR** jumper is open by default and can be closed with solder to force the device's I²C address to $0x36$. This is handy if you need to have two Triggers on the same bus. If you need more than two devices on the bus, or if these addresses conflict with another I²C device the address can be changed in software. Please see the Command Set.

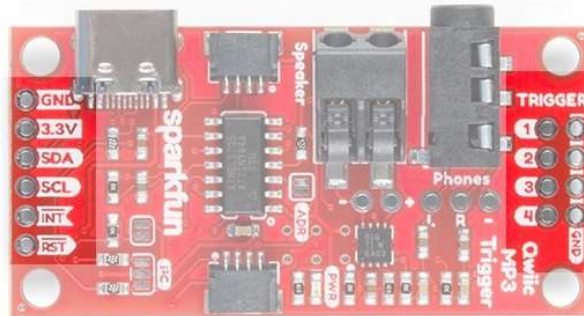
Troubleshooting Tip: Closing the **ADR** jumper forces the device to I²C address 0x36 regardless what the user may have set via the SET_ADDRESS command.

Cutting the **I²C** jumper will remove the 2.2k Ohm resistors from the I²C bus. If you have many devices on your I²C bus you may want to remove these jumpers. Not sure how to cut a jumper? Read here!

The **INT** jumper is located below the SparkFun logo and connects a 10K pull-up resistor to the INT pin. If you have multiple, open-drain, interrupt pins connected together you may want to remove this pull-up to better control the pull-up resistance.

I/O Pins

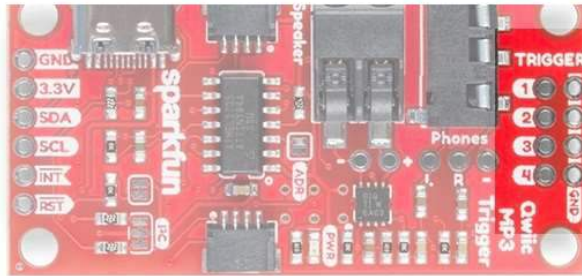
There are several I/O pins broken out on the board, which are described in the table below.



Pin Name	Type	Description
RST	Input	Active low. Pull this pin low to reset the ATtiny84A, effectively resetting the Qwiic MP3 Trigger.
INT	Output	Active low. Goes low when track is finished playing. Goes high again when CLEAR_INTERRUPTS command is issued.
SCL	Input	Serial clock line of I ² C interface. Qwiic MP3 Trigger does implement clock stretching and will hold the clock line low if it is unable to receive additional I ² C data.
SDA	Input/Output	Serial data line of I ² C interface.
3.3V	Power	Qwiic MP3 Trigger can be powered from 2.8V to 3.3V . Anything greater than 3.6V will damage the microSD card.
GND	Power	The ground pin.
Trigger 1-4	Input	When a trigger pin is pulled to ground, the corresponding T00X.mp3 file is played. Pins can be combined to play T001 to T010. Pins are 5V tolerant.

Triggers

There are four trigger pins at the top of the board. When pulled low these pins begin playing whatever file is named T001.mp3 to T010.mp3. For example, if you attach a momentary button to **Pin 3** and **GND**, when you press that button the T003.mp3 file will immediately be played. This allows you to start playing sound effects with the touch of a button without *any* programming!



Single Trigger

For a basic triggered setup, load four files named *T001.mp3*, *T002.mp3*, *T003.mp3*, and *T004.mp3* on the microSD card. Use a wire or button to connect a trigger pin to ground and the associated track will begin playing. Once you have the setup working, use any momentary button to allow a user to cause an MP3 to start playing.

Using Multiple Triggers

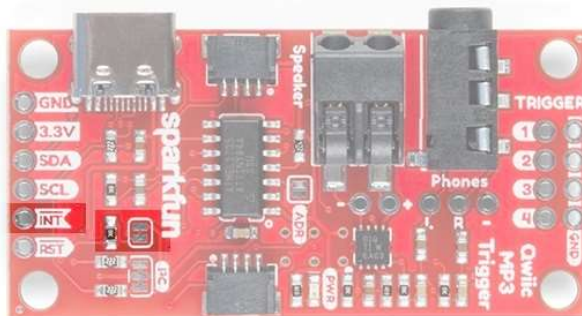
By pulling multiple pins down simultaneously the four triggers can play up to ten tracks: T001 to T010. When a trigger pin is detected the pin values are added together. For example, pulling pins **2** and **4** low at the same time will play track *T006.mp3* as will pulling pins **1**, **2**, and **3** low at the same time.

Note:

- The trigger pins are constantly monitored and any change in pins will immediately cause the new track to begin playing.
- Indefinitely holding a pin low will cause the same track to play again. This allows for looping sound effects.

Interrupt Pin

The Qwiic MP3 Trigger has an **INT pin** which is configured as an open-drain pin with an on board 10K Ohm pull-up.



The **INT pin** will go low when a track has stopped playing. Once the **CLEAR_INTERRUPTS** `0x0D` command has been received, the **INT pin** will become high-impedance and will return to a high level.

If you have multiple devices with bussed interrupt pins you may want to cut the **INT jumper** to remove the 10K pull-up resistor.

Qwiic MP3 Trigger Library

Note: This section assumes you are using the latest version of the Arduino IDE on your desktop. If this is your first time using Arduino, please review our tutorial on installing the Arduino IDE. If you have not

previously installed an Arduino library, please check out our installation guide.

The SparkFun Qwiic MP3 Trigger Arduino library demonstrates how to control all the features of the Qwiic MP3 Trigger. We recommend downloading the SparkFun library through the Arduino library manager by searching '**SparkFun MP3 Trigger**'. Alternatively you can grab the zip here from the GitHub repository:

SPARKFUN QWIIC MP3 TRIGGER ARDUINO LIBRARY (ZIP)

Once you have the library installed checkout the various examples.

- **Example1:** Play the first MP3 track on the microSD card.
- **Example2:** Play the next track on the microSD card.
- **Example3:** Play a particular file. For example `mp3.playFile(3);` will play F003.mp3.
- **Example4:** Stop and pause tracks.
- **Example5:** Kitchen sink example showing setting of volume, equalizer, get song name, get song count, get firmware version, etc.
- **Example6:** Change the I²C address of the MP3 Trigger. Allows multiple Triggers to live on the same I²C bus.
- **Example7:** Shows how to start the library using a different Wire port (for example Wire1).
- **Example8:** Demonstrates how to check for the end-of-song interrupt and begin playing the song again.

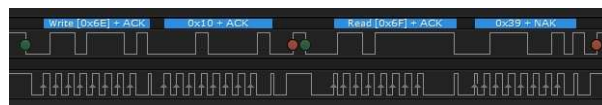
Command Set

The SparkFun Qwiic MP3 Trigger library takes care of all these commands for you. However, if you want to implement your own interface, the following commands are available (see list below). The Qwiic MP3 Trigger uses standard I²C communication to receive commands and send responses. By default, the **unshifted I²C address** of the Qwiic MP3 Trigger is `0x37`. The **write** byte is `0x6E` and the **read** byte is `0x6F`.

Here is an example I²C transaction showing how to set the volume level to 10:



Here is an example I²C transaction showing how to read the device ID (0x39):



The following commands are available:

- **STOP** `0x00` - Stops any currently playing track
- **PLAY_TRACK** `0x01` [TRACKNUMBER] - Play a given track number. For example `0x01 0x0A` will play the 10th MP3 file in the root directory.
- **PLAY_FILENUMBER** `0x02` [FILENUMBER] - Play a file # from the root directory. For example `0x02 0x03` will play F003.mp3.
- **PAUSE** `0x03` - Pause if playing, or starting playing if paused
- **PLAY_NEXT** `0x04` - Play the next file (next track) located in the root directory
- **PLAY_PREVIOUS** `0x05` - Play the previous file (previous track) located in the root directory
- **SET_EQ** `0x06` [EQ_SETTING] - Set the equalization level to one of 6 settings: 0 = Normal, 1 = Pop, 2 = Rock, 3 = Jazz, 4 = Classical, 5 = Bass. Setting is stored to NVM and is loaded at each power-on.

project. The main controller (such as an Uno) needs to wait up to **2 seconds** before giving up communicating with the Qwiic MP3 Trigger. The SparkFun Qwiic MP3 Trigger library takes care of the **2 second wait** but if you're writing your own implementation then consider the following example code:

```
if (isConnected() == false)
{
    delay(2000); //Device may take up to 1500ms to mount the SD card

    //Try again
    if (isConnected() == false)
        return (false); //No device detected
}
return (true); //We're all setup!
```

Maximum Song Count

Up to 255 songs can be loaded onto Qwiic MP3 Trigger and triggered through the command interface.

Example 1: Play Track 1

The Qwiic MP3 Trigger can be used both as a standalone board or with the Qwiic connect system. In this case, we will be using the RedBoard Qwiic as the microcontroller in the Qwiic system.

For both options, make sure to load an MP3 file labeled `T001.mp3` onto the MicroSD card.

Heads up! Make sure to follow the same format to label each track when including more than one audio file. Otherwise, your associated audio file will not begin playing with the trigger pin. For example, if you were including a second track, make sure to label it as `T002.mp3` to associate it with **Trigger Pin 2**.

Standalone: Using Trigger 1

By default the firmware installed on the ATtiny84 allows you to play tracks using the triggers. For more details, see the *Triggers* section of the **Hardware Overview**. Simply plug in the SD card, power the Qwiic MP3 Trigger, and short the **Trigger Pin 1** to **GND**. Everytime you short both pins, `T001.mp3` will play.



*Triggering the first track to play by shorting **Trigger 1** with a pair tweezers. **Click** on image for a closer view of the hardware setup.*

Arduino Library: Using RedBoard Qwiic

Plug in the SD card into the MP3 Trigger. Then, connect the Qwiic MP3 Trigger to the RedBoard Qwiic using a Qwiic cable.



Triggering the first track to play through the Qwiic connection. **Click** on image for a closer view of the hardware setup.

Upload `Example1-PlaySong.ino` using the Arduino IDE to the RedBoard Qwiic. Once uploaded, the RedBoard will check for the Qwiic MP3 Trigger, set the volume to 10 and then play `T001.mp3`. Pressing the **RESET** button on the RedBoard will run the sketch again.

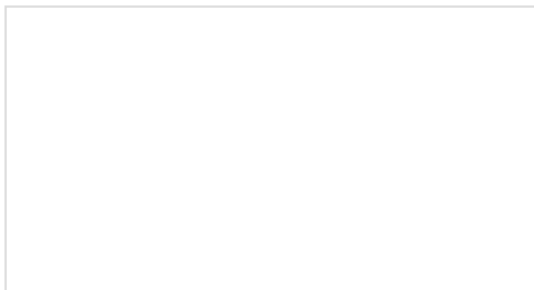
Resources and Going Further

Have fun with your new tunes maker!

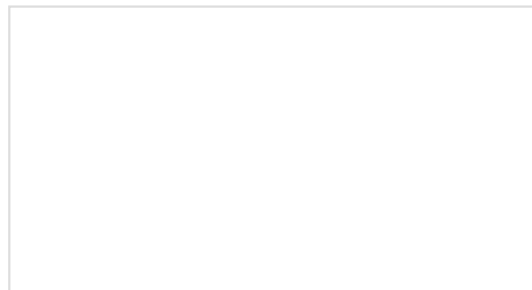
For more on the Qwiic MP3 Trigger, check out the links below:

- [Schematic \(PDF\)](#)
- [Eagle Files \(ZIP\)](#)
- [WT2003S Datasheet \(PDF\)](#)
- [Qwiic Landing Page](#)
- [SparkFun Qwiic MP3 Trigger Arduino Library](#)
- [Example Sketches \(ZIP\)](#)
- [Qwiic MP3 Trigger Repo](#)
- [SFE Product Showcase](#)

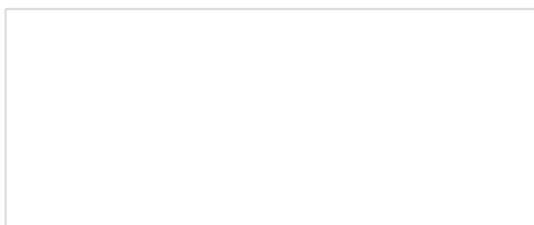
Need some inspiration? Check out some of these related tutorials:



MP3 Player Shield Music Box
Music Box Project based on the Dr. Who TARDIS.



Sound Page Guide
How to use the Lilypad MP3 Player and some Bare Conductive Paint to make a fandom silhouette sound trigger page.

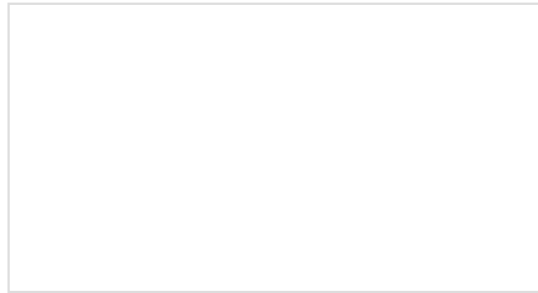




Photon Battery Shield Hookup Guide

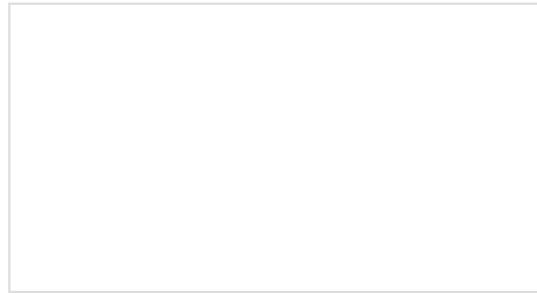
The Photon Battery Shield has everything your Photon needs to run off, charge, and monitor a LiPo battery. Read through this hookup guide to get started using it.

Check out these other Qwiic tutorials:



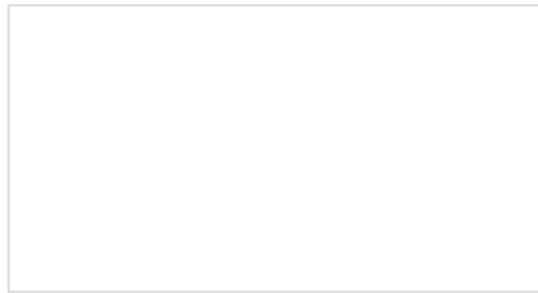
Transparent Graphical OLED Breakout Hookup Guide

The future is here! Our Qwiic Transparent Graphical OLED Breakout allows you to display custom images on a transparent screen using either I2C or SPI connections.



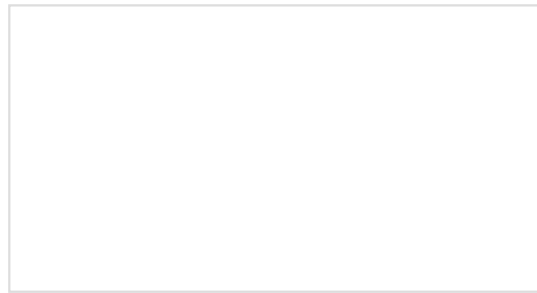
Qwiic Distance Sensor (RFD77402) Hookup Guide

The RFD77402 uses an infrared VCSEL (Vertical Cavity Surface Emitting Laser) TOF (Time of Flight) module capable of millimeter precision distance readings up to 2 meters. It's also part of SparkFun's Qwiic system, so you won't have to do any soldering to figure out how far away things are.



Power Delivery Board - USB-C (Qwiic) Hookup Guide

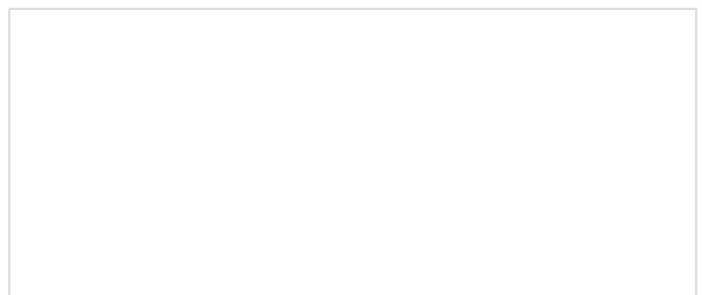
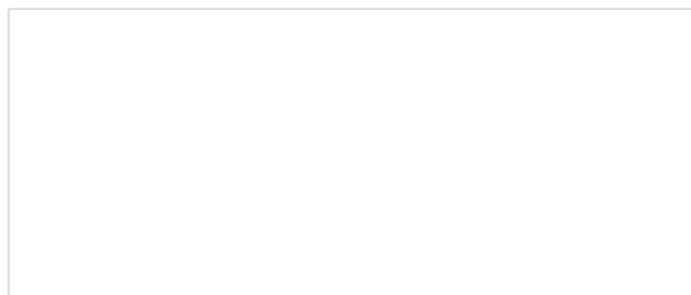
This guide will go over how to use the USB Type-C Power Delivery Board.



SparkFun Air Quality Sensor - SGP30 (Qwiic) Hookup Guide

A hookup guide to get started with the SparkFun Air Quality Sensor - SGP30 (Qwiic).

Or check out these blog posts:

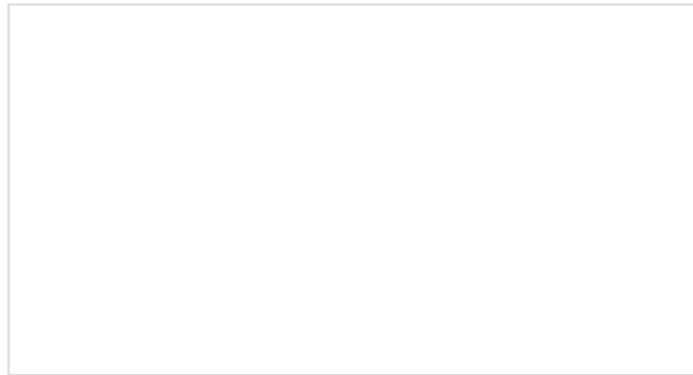




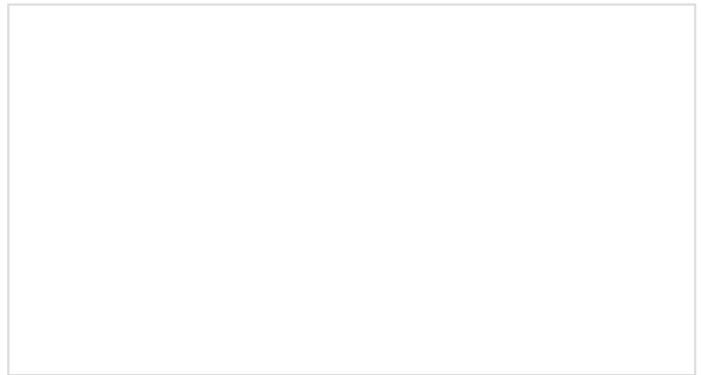
Enginursday: The Dug Collar
JULY 12, 2018



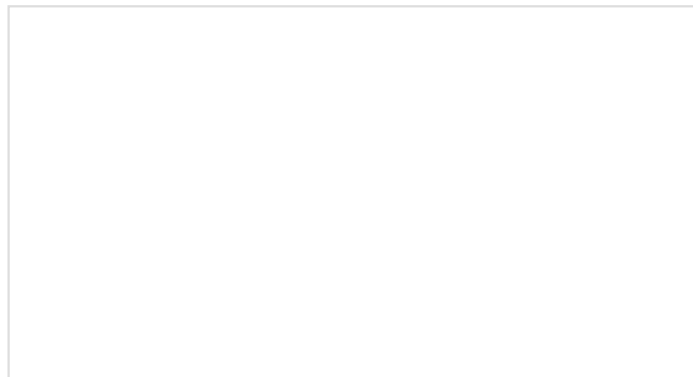
The MP3 Music Box
FEBRUARY 19, 2019



Enginursday: The Qwiic Jukebox
APRIL 4, 2019



Enginursday: 3D Printed Harry Potter Talking Head
AUGUST 8, 2019



How I Built a Cap Touch Sound Board with the Qwiic System
AUGUST 5, 2020