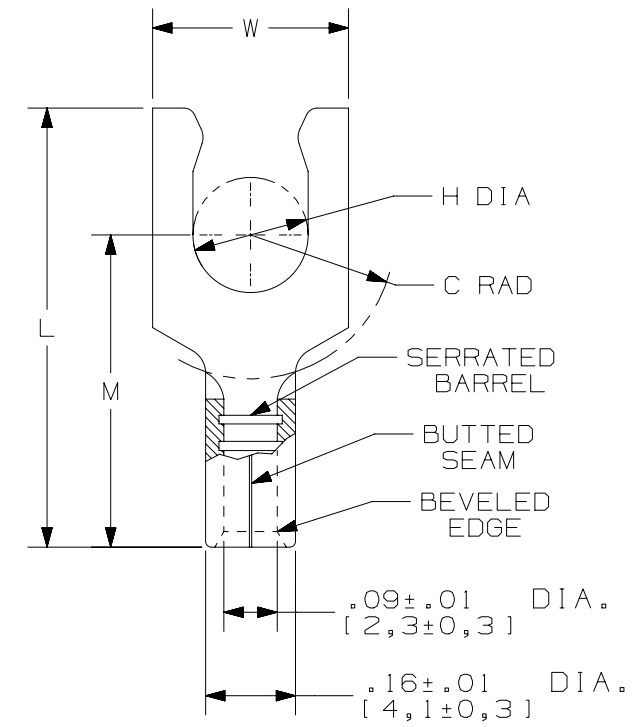


THIS COPY IS PROVIDED ON A RESTRICTED BASIS AND IS NOT TO BE USED IN ANY WAY DETRIMENTAL TO THE INTERESTS OF PANDUIT CORP.

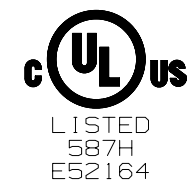
PANDUIT PART #	STUD SIZE	DIMENSIONS - in. [mm]				
		L ± .02 [0,5]	W ± .01 [0,3]	C ± .02 [0,5]	M ± .02 [0,5]	H ± .01 [0,3]
E14-6LFB	#6	.70 [17,78]	.25 [6,35]	.22 [5,59]	.48 [12,19]	.15 [3,81]
E14-8LFB	#8	.77 [19,56]	.29 [7,37]	.27 [6,86]	.53 [13,46]	.17 [4,32]
E14-10LFB	#10	.77 [19,56]	.33 [8,38]	.27 [6,86]	.53 [13,46]	.20 [5,08]

UL & CSA TOOLS
CT-100A CT-200 CT-600-A (CT-570CH) CT-1570 CT-2500 (CT-2570CH)

PANDUIT APPROVED TOOLS
CT-160 CT-260



- NOTES:
- UL LISTED & CSA CERTIFIED FOR:
 - A. #16-14 AWG SOLID OR STRANDED COPPER WIRE
 - B. 302°F [150°C] MAX TEMP RATING
 - C. 2000 VOLTS MAX
 - MATERIAL:
 - A. STAMPING - .03" [0,8] THK COPPER, TIN PLATED
 - WIRE STRIP LENGTH: $9/32'' \begin{matrix} +1/32 \\ -0 \end{matrix}$ [7,1mm $\begin{matrix} +0,8 \\ -0 \end{matrix}$]
 - SEE WWW.PANDUIT.COM FOR PACKAGE QUANTITIES
 - DIMENSIONS IN BRACKETS ARE IN MILLIMETERS



TITLE		STRONGHOLD LOCKING FORK TERMINAL NON-INSULATED, BUTTED SEAM #16-14 AWG		
ITEM REVISION NAME		CUSTOMER DRAWING		
DATASET FILE NAME		00123SHR/00		
UNLESS OTHERWISE SPECIFIED, DIMENSIONAL TOLERANCES ARE: IN [mm]		MATERIAL: SEE NOTE 3		
.X ± .XX ±		.XXX ± ANGLES ±		
DRAWN BY		DATE		DRAWING NUMBER:
JHNU	2/18	CHK	SCALE	SH41054
TMR		NTS		SHT 1 OF 1
REV		DATE		SIZE
BY		APR		A

REV	DATE	BY	CHK	APR	DESCRIPTION	ECN
00	2/18	JHNU	TMR	RGB	RELEASED	00123SH

D10100DA/16