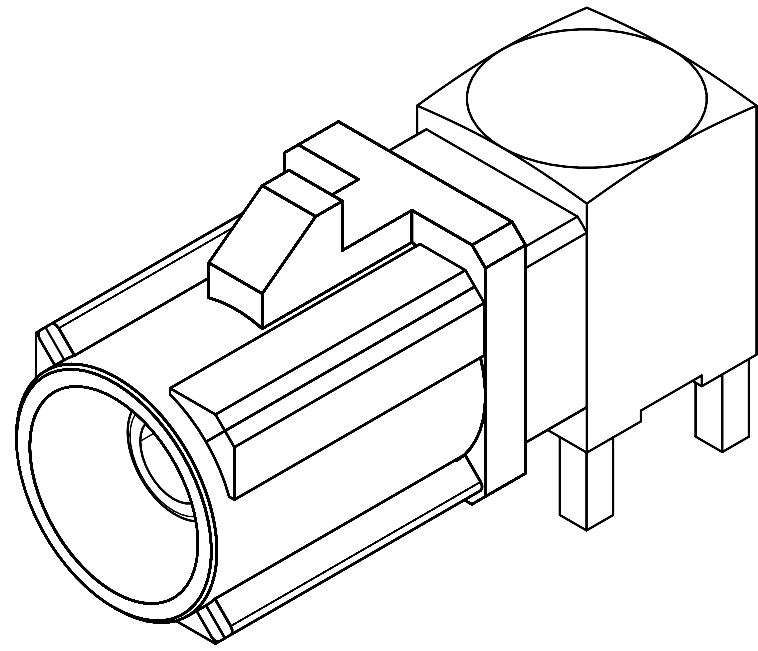
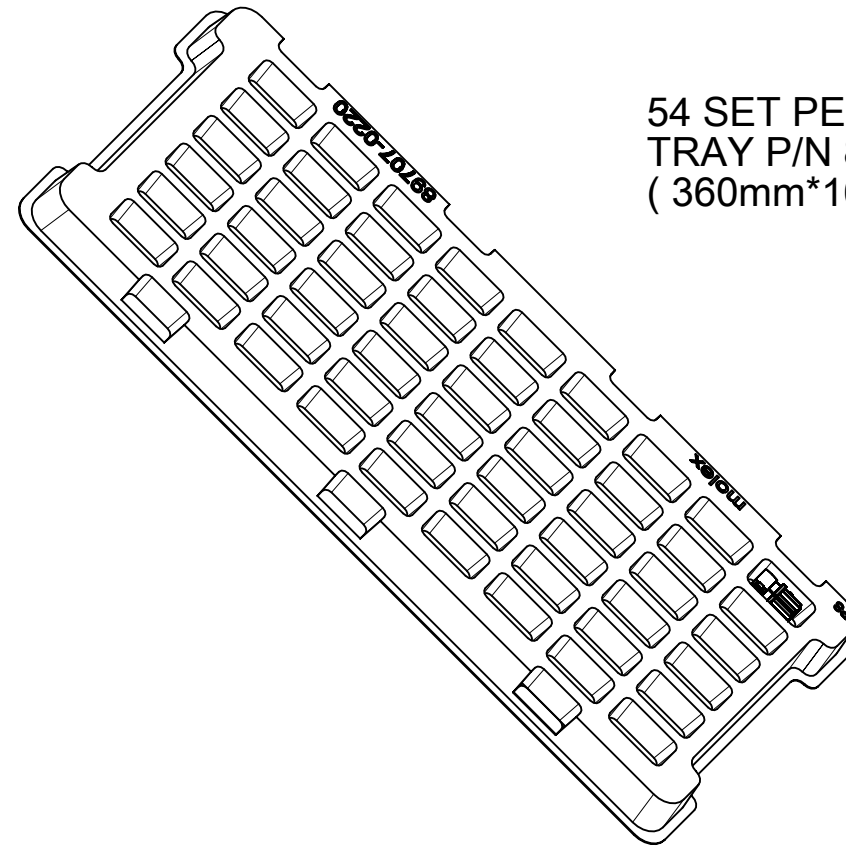


PN 73403-511X

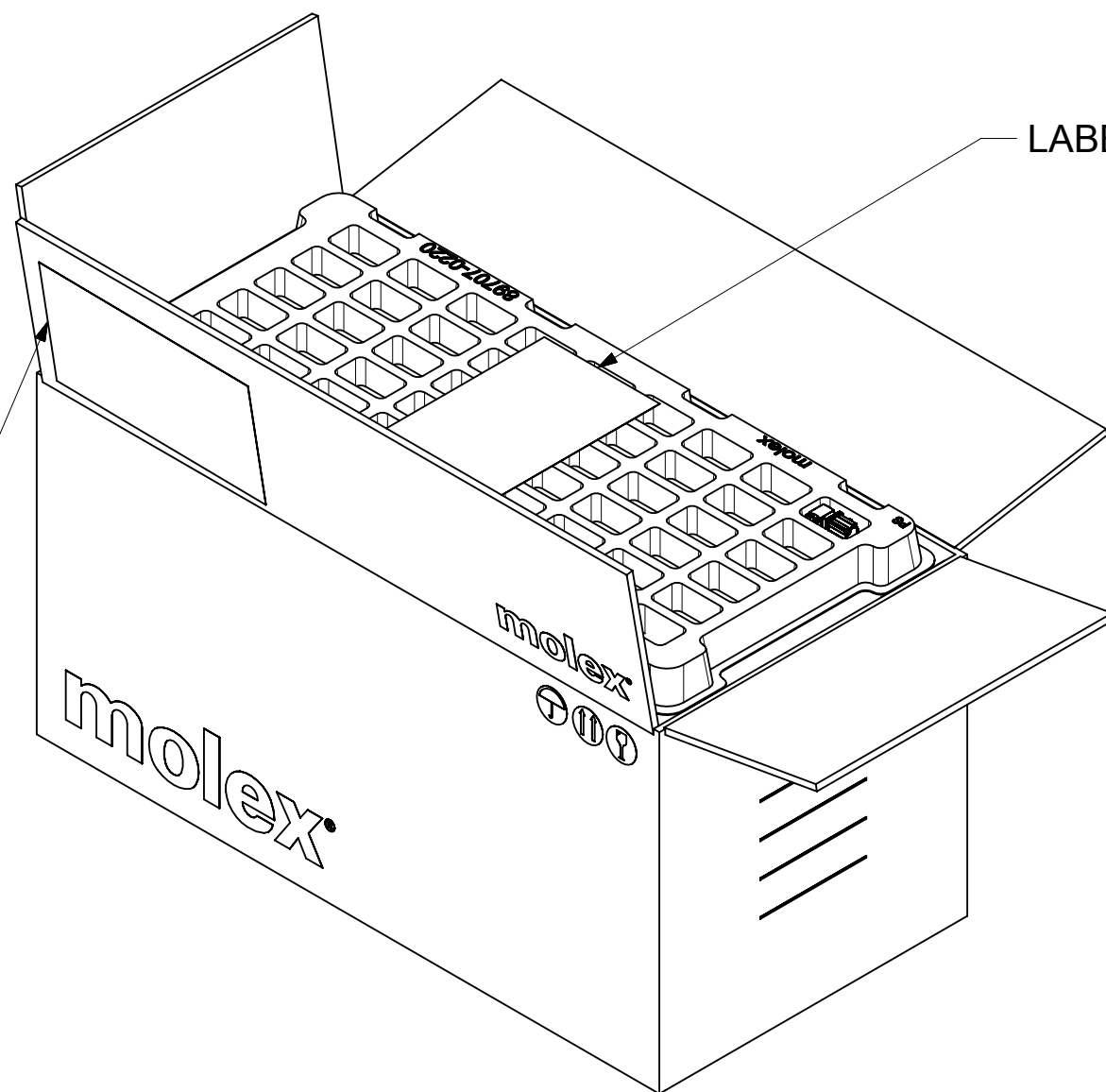


54 SET PER TRAY
TRAY P/N 89707-0220
(360mm*165mm)



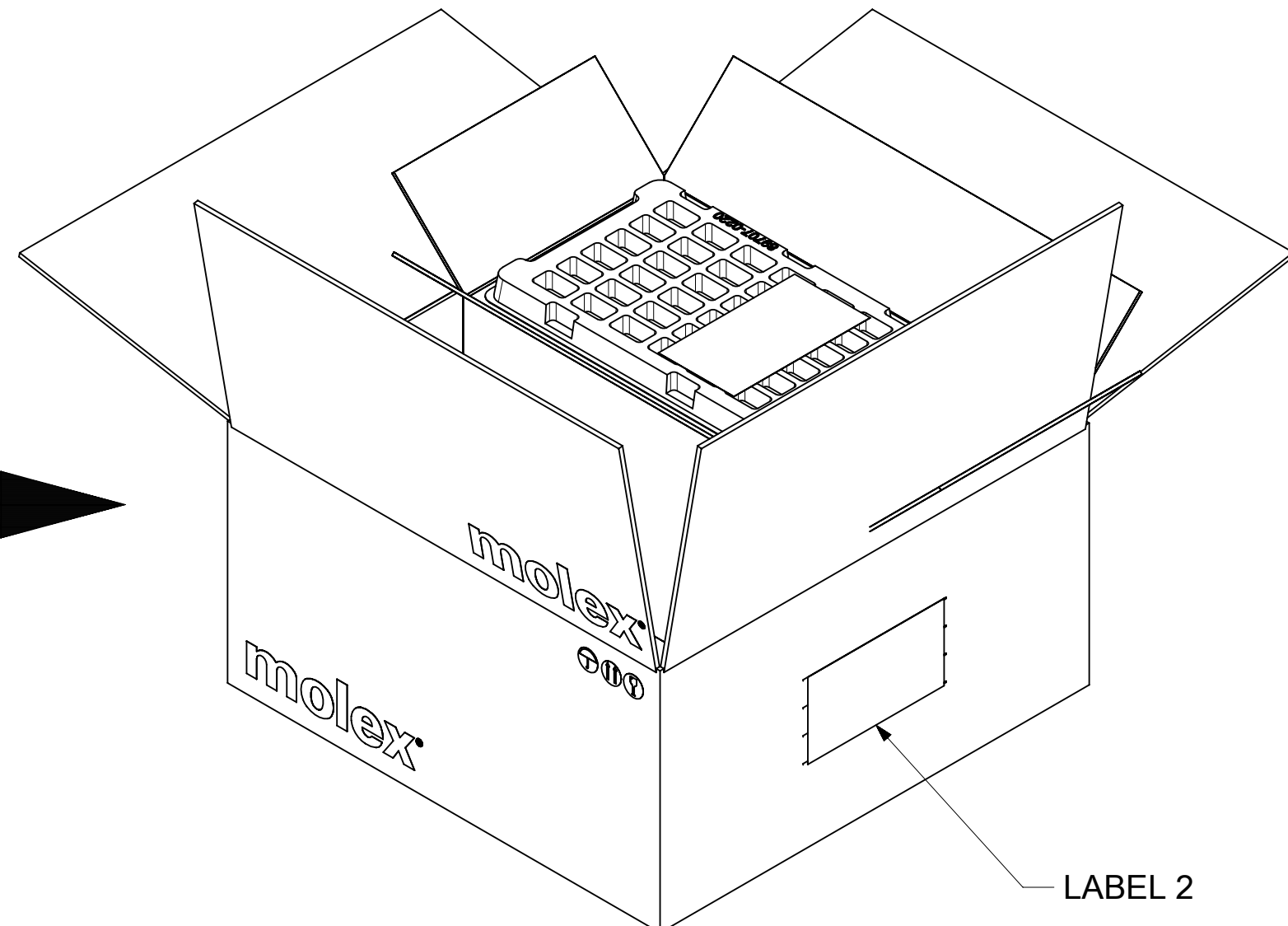
540 SET PER INNER
CARTON BOX
P/N 96707-0001

LABEL 1



1080 SET PER OUTER
CARTON BOX
P/N 96708-0005

LABEL 2



FUNCTIONAL SYMBOLS	THIS DRAWING CONTAINS INFORMATION THAT IS PROPRIETARY TO MOLEX ELECTRONIC TECHNOLOGIES, LLC AND SHOULD NOT BE USED WITHOUT WRITTEN PERMISSION																																									
<table border="1"> <tr> <td>FA = 0</td> <td>HYBRID</td> <td>SCALE</td> <td>1:1</td> </tr> <tr> <td>EA = 0</td> <td colspan="3">GENERAL TOLERANCES (UNLESS SPECIFIED)</td> </tr> <tr> <td>EP = 0</td> <td colspan="3">ANGULAR TOL ± 2.0°</td> </tr> <tr> <td></td> <td>4 PLACES</td> <td>±</td> <td></td> </tr> <tr> <td></td> <td>3 PLACES</td> <td>±</td> <td></td> </tr> <tr> <td></td> <td>2 PLACES</td> <td>±</td> <td></td> </tr> <tr> <td></td> <td>1 PLACE</td> <td>±</td> <td></td> </tr> <tr> <td></td> <td>0 PLACES</td> <td>±</td> <td></td> </tr> </table>	FA = 0	HYBRID	SCALE	1:1	EA = 0	GENERAL TOLERANCES (UNLESS SPECIFIED)			EP = 0	ANGULAR TOL ± 2.0°				4 PLACES	±			3 PLACES	±			2 PLACES	±			1 PLACE	±			0 PLACES	±		CURRENT REV DESC:							PACKAGING FOR 73403-511X		
FA = 0	HYBRID	SCALE	1:1																																							
EA = 0	GENERAL TOLERANCES (UNLESS SPECIFIED)																																									
EP = 0	ANGULAR TOL ± 2.0°																																									
	4 PLACES	±																																								
	3 PLACES	±																																								
	2 PLACES	±																																								
	1 PLACE	±																																								
	0 PLACES	±																																								
EWR # 14835-A ADDED LENGTH AND WIDTH OF TRAY ON DRAWING			EC NO: 683284																																							
DRAFT WHERE APPLICABLE MUST REMAIN WITHIN DIMENSIONS			THIRD ANGLE PROJECTION			DRAWING		SERIES		DOCUMENT NUMBER		DOC TYPE	DOC PART	REVISION																												
						C-SIZE		73403		SD-73403-511-PKG		PSD	001	B1																												
										MATERIAL NUMBER		CUSTOMER		SHEET NUMBER																												
												GENERAL MARKET		1 OF 2																												

LABEL 1

LABEL 1

(1P) PART NUMBER	XXXXXXXXXXXX	(9D) DATE CODE	YYWW
DESCRIPTION	SMB JACK FAKRA R/A PCB 50 OHM		
(Q) QUANTITY	540	 www.molex.com	
(4L) COUNTRY OF ORIGIN	Taiwan		
(12D) INV CTRL DATE	YYYY/MM/DD		
(1T) TRACEABILITY	XXXXXXXXXXXX		
RoHS Compliant with Exemption REACH SVHC information - see www.molex.com		Low-Halogen	
1 of 1	OPERATOR:	17.11.23	

MOLEX TAIWAN LTD. / DANSHUI, NEW TAIPEI CITY, TAIWAN 25144

LABEL 2

(1P) PART NUMBER	XXXXXXXXXXXX	(9D) DATE CODE	YYWW
DESCRIPTION	SMB JACK FAKRA R/A PCB 50 OHM		
(Q) QUANTITY	1080	 www.molex.com	
(4L) COUNTRY OF ORIGIN	Taiwan		
(12D) INV CTRL DATE	YYYY/MM/DD		
(1T) TRACEABILITY	XXXXXXXXXXXX		
RoHS Compliant with Exemption REACH SVHC information - see www.molex.com		Low-Halogen	
1 of 1	OPERATOR:	17.11.23	

MOLEX TAIWAN LTD. / DANSHUI, NEW TAIPEI CITY, TAIWAN 25144

FUNCTIONAL SYMBOLS	THIS DRAWING CONTAINS INFORMATION THAT IS PROPRIETARY TO MOLEX ELECTRONIC TECHNOLOGIES, LLC AND SHOULD NOT BE USED WITHOUT WRITTEN PERMISSION		
	DIMENSION UNITS	SCALE	CURRENT REV DESC:
	HYBRID	1:1	EWR # 14835-A ADDED LENGTH AND WIDTH OF TRAY ON DRAWING
	GENERAL TOLERANCES (UNLESS SPECIFIED)		
	ANGULAR TOL ± 2.0°		EC NO: 683284 DRWN: JSU18 2021/10/29 CHK'D: YCHENG 2021/10/29 APPR: YCHENG 2021/10/29
DIVISIONAL SYMBOLS	4 PLACES ±		
	3 PLACES ±		INITIAL REVISION: DRWN: SCHOU 2009/05/12 APPR: MHUANG 2009/05/19
	2 PLACES ±		
	1 PLACE ±		DOCUMENT NUMBER SD-73403-511-PKG DOC TYPE PSD DOC PART 001 REVISION B1
	0 PLACES ±		
DRAFT WHERE APPLICABLE MUST REMAIN WITHIN DIMENSIONS		THIRD ANGLE PROJECTION 	DRAWING C-SIZE
		SERIES 73403	MATERIAL NUMBER CUSTOMER GENERAL MARKET
			SHEET NUMBER 2 OF 2

molex

PACKAGING FOR 73403-511X

PRODUCT CUSTOMER DRAWING

MATERIALS AND FINISHES

BODY BRASS
PLATED NICKEL

HOUSING BRASS
PLATED TIN

CENTER CONTACT PHOSPHOR BRONZE/BRASS
PLATED GOLD

OUTER CASING HIGH TEMPERATURE PLASTIC
KEYING SEE TABLE
COLOR SEE TABLE

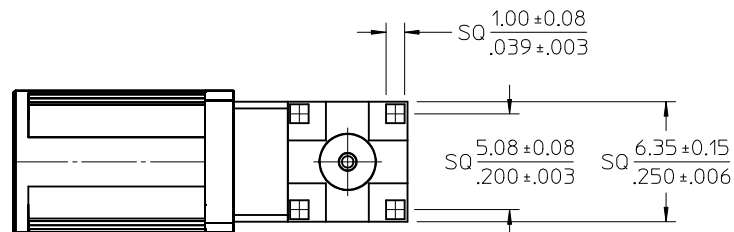
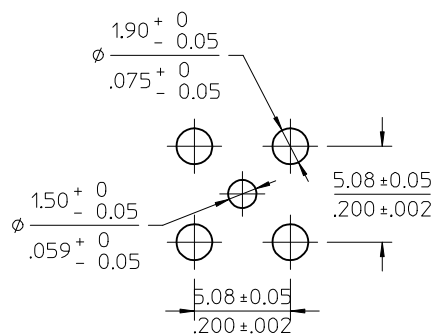
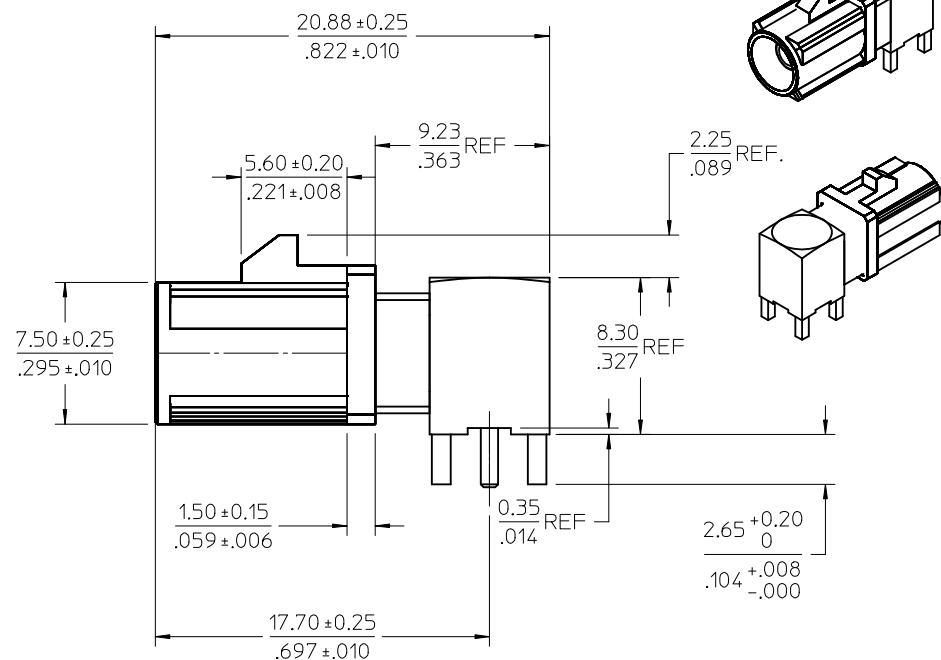
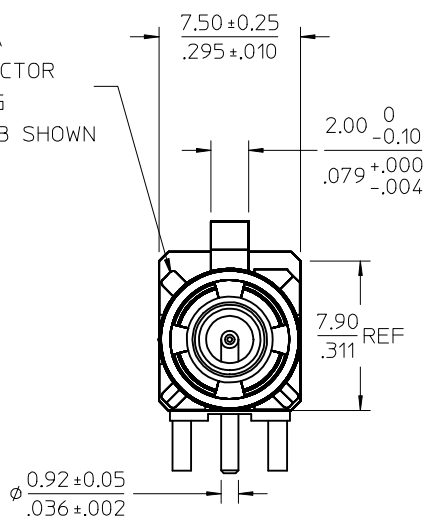
INSULATOR TEFLON

PACKAGING BY TAPE AND REEL

RETENTION SPECIFICATION

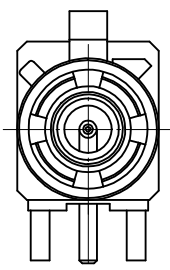
THE FAKRA CONNECTOR SHROUD WILL WITHSTAND
A LONGITUDINAL FORCE OF 110 N (24.75 LBS)

FAKRA
CONNECTOR
KEYING
CODE B SHOWN

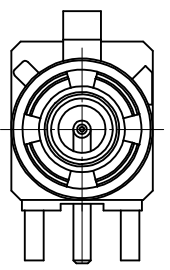


PS-89675-3310	PRODUCT SPECIFICATION
MIL-STD-348A, FIG. 311.1	INTERFACE SPECIFICATION
SPECIFICATION	DESCRIPTION

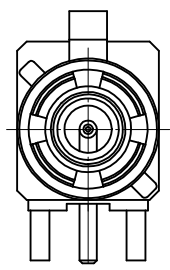
RTM PDR15092069 PDR13091433 EC NO: URF2016-0255 DRWNLIN 2013/09/24 CHKD: APPR: YCHENG 2015/10/13 DESCRIPTION	QUALITY SYMBOLS	GENERAL TOLERANCES (UNLESS SPECIFIED)	DIMENSION STYLE	SCALE	DESIGN UNITS	THIRD ANGLE PROJECTION
	$\nabla = 0$ $\nabla = 0$ $\nabla = 0$	mm INCH 4 PLACES ± --- ± --- 3 PLACES ± --- ± --- 2 PLACES ± --- ± --- 1 PLACE ± --- ± --- 0 PLACE ± --- ± ---	MM/IN	1:1	METRIC	TITLE SMB JACK, FAKRA,R/A PCB 50 OHMS T&R SMB-J/PCB/RA
	DRAWN BY EL IN CHECKED BY JOANNE APPROVED BY YCHENG	DATE 2013/09/24 DATE 2013/09/24 DATE 2015/10/13	MATERIAL NO. SEE SHEET 2	DOCUMENT NO. SD-73403-650	SHEET NO. 1 OF 5	
	ANGULAR ± 2° DRAFT WHERE APPLICABLE MUST REMAIN WITHIN DIMENSIONS	SIZE C THIS DRAWING CONTAINS INFORMATION THAT IS PROPRIETARY TO MOLEX INCORPORATED AND SHOULD NOT BE USED WITHOUT WRITTEN PERMISSION				



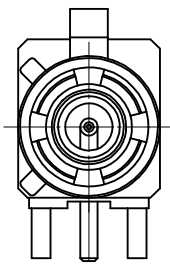
CODE-A



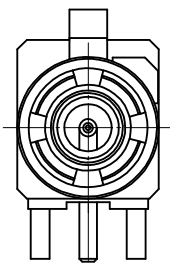
CODE-B



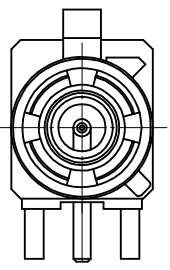
CODE-C



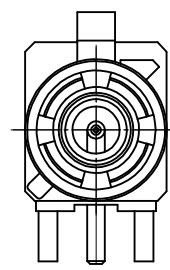
CODE-D



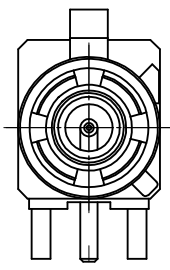
CODE-E



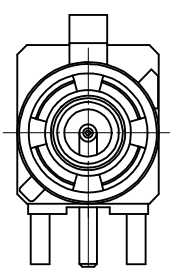
CODE-F



CODE-G



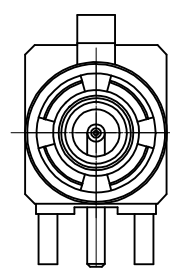
CODE-H



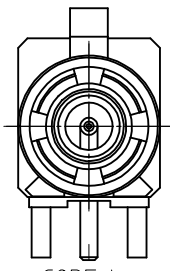
CODE-I



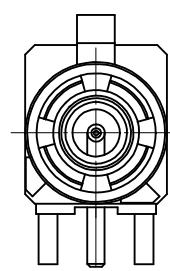
CODE-K



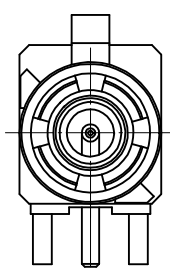
CODE-Z



CODE-L



CODE-M



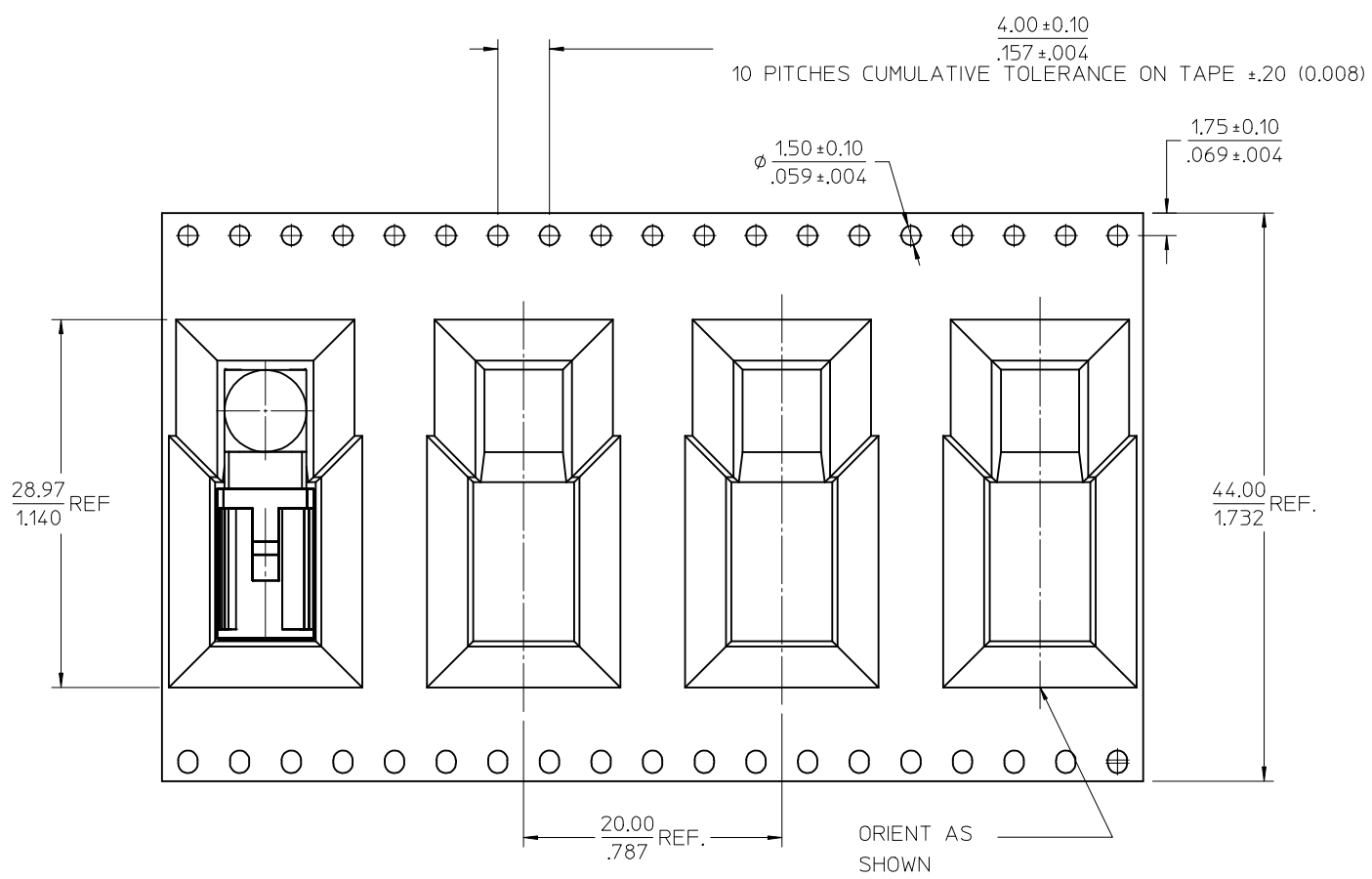
CODE-N

N	PASTEL GREEN	73403-6513
M	PASTEL ORANGE	73403-6512
L	CARMINE RED	73403-6511
Z	WATER BLUE	73403-6510
K	CURRY YELLOW	73403-6509
I	BEIGE	73403-6508
H	VIOLET	73403-6507
G	GRAY	73403-6506
F	BROWN	73403-6505
E	GREEN	73403-6504
D	BORDEAUXVIOLET	73403-6503
C	BLUE	73403-6502
B	NATURAL	73403-6501
A	BLACK	73403-6500
KEYING CODE	COLOR	PART NO.

SEE SHEET 1 EC NO: URF2016-0255 DRWNLIN 2013/09/24 CHKD: APPR: YCHENG 2015/10/13	QUALITY SYMBOLS = 0 = 0 = 0	GENERAL TOLERANCES (UNLESS SPECIFIED) <table border="1"> <tr><th></th><th>mm</th><th>INCH</th></tr> <tr><td>4 PLACES</td><td>± .005</td><td>± .0004</td></tr> <tr><td>3 PLACES</td><td>± .005</td><td>± .0004</td></tr> <tr><td>2 PLACES</td><td>± .005</td><td>± .0004</td></tr> <tr><td>1 PLACE</td><td>± .005</td><td>± .0004</td></tr> <tr><td>0 PLACE</td><td>± .005</td><td>± .0004</td></tr> </table>		mm	INCH	4 PLACES	± .005	± .0004	3 PLACES	± .005	± .0004	2 PLACES	± .005	± .0004	1 PLACE	± .005	± .0004	0 PLACE	± .005	± .0004	DIMENSION STYLE MM/IN DRAWN BY DATE EL IN 2013/09/24 CHECKED BY DATE JOANNE 2013/09/24 APPROVED BY DATE YCHENG 2015/10/13	SCALE 1:1 DESIGN UNITS METRIC THIRD ANGLE PROJECTION	TITLE SMB JACK, FAKRA,R/A PCB 50 OHMS T&R SMB-J/PCB/RA molex	MATERIAL NO. SEE TABLE DOCUMENT NO. SD-73403-650	SHEET NO. 2 OF 5
		mm	INCH																						
	4 PLACES	± .005	± .0004																						
	3 PLACES	± .005	± .0004																						
2 PLACES	± .005	± .0004																							
1 PLACE	± .005	± .0004																							
0 PLACE	± .005	± .0004																							
ANGULAR ± 2°		DRAFT WHERE APPLICABLE MUST REMAIN WITHIN DIMENSIONS		THIS DRAWING CONTAINS INFORMATION THAT IS PROPRIETARY TO MOLEX INCORPORATED AND SHOULD NOT BE USED WITHOUT WRITTEN PERMISSION																					
REV A		SIZE C																							

13 12 11 10 9 8 7 6 5 4 3 2 1

J
I
H
G
F
E
D
C
B
A



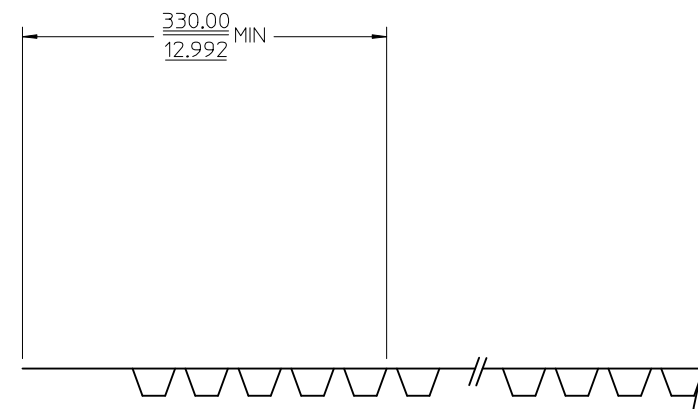
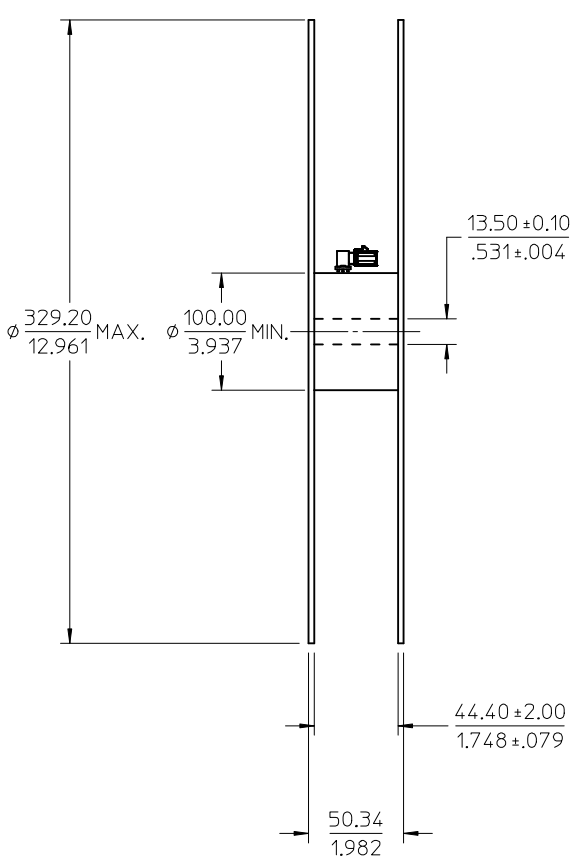
NOTES:
1. 250 CONNECTORS PER REEL ON 330.2 mm (13.0 IN) REEL

SEE SHEET 1 EC NO: URF2016-0255 DRWN:EL IN 2013/09/24 CHKD: APPR:YCHENG 2015/10/13	QUALITY SYMBOLS	GENERAL TOLERANCES (UNLESS SPECIFIED)	DIMENSION STYLE	SCALE	DESIGN UNITS	THIRD ANGLE PROJECTION
	∇=0 ∇=0 ∇=0	mm INCH	MM/IN	1:1	METRIC	
A	DESCRIPTION	4 PLACES ± --- ± ---	DRAWN BY	DATE	SMB JACK, FAKRA,R/A PCB 50 OHMS T&R SMB-J/PCB/RA molex	
	REV	3 PLACES ± --- ± ---	EL IN	2013/09/24		
		2 PLACES ± --- ± ---	CHECKED BY	DATE	DOCUMENT NO. SD-73403-650 SHEET NO. 3 OF 5	
		1 PLACE ± --- ± ---	JOANNE	2013/09/24		
		0 PLACE ± --- ± ---	APPROVED BY	DATE	THIS DRAWING CONTAINS INFORMATION THAT IS PROPRIETARY TO MOLEX INCORPORATED AND SHOULD NOT BE USED WITHOUT WRITTEN PERMISSION	
			YCHENG	2015/10/13		
		ANGULAR ± 2 °	MATERIAL NO.		SEE SHEET 2	
		DRAFT WHERE APPLICABLE MUST REMAIN WITHIN DIMENSIONS	SIZE			

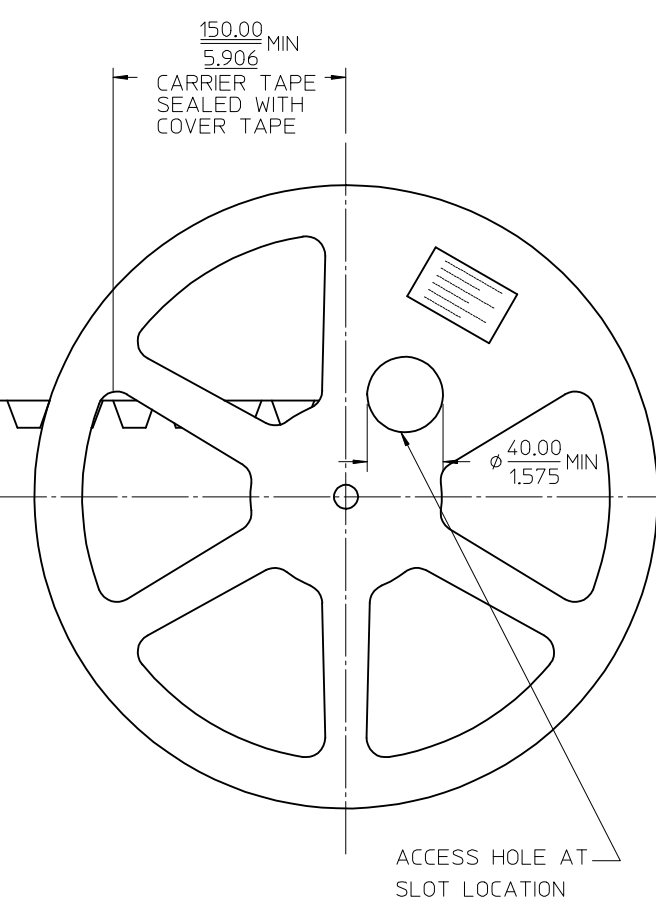
1b_frame_C_P_AM_T Rev. G 2012/01/11 12 11 10 9 8 7 6 5 4 3 2 1

13 12 11 10 9 8 7 6 5 4 3 2 1

J I H G F E D C B A

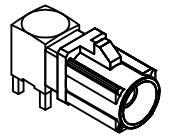


250mm MIN OF CARRIER AND /OR COVER TAPE.
 PLUS 80mm MINIMUM OF CARRIER TAPE SEALED
 WITH COVER TAPE

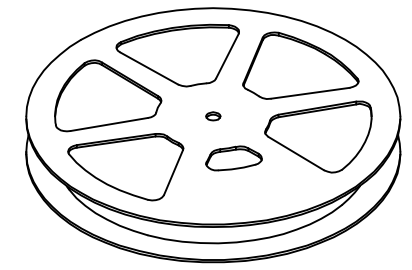
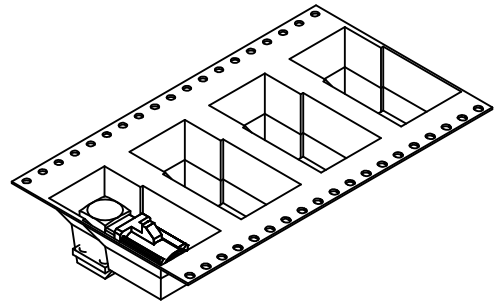


SEE SHEET 1 EC NO: URF2016-0255 DRW:ELIN 2013/09/24 CHKD: APPR:YCHENG 2015/10/13	QUALITY SYMBOLS	GENERAL TOLERANCES (UNLESS SPECIFIED)		DIMENSION STYLE	SCALE	DESIGN UNITS	THIRD ANGLE PROJECTION
	$\nabla = 0$	mm	INCH	MM/IN	1:2	METRIC	
	$\nabla = 0$	4 PLACES ± --- ± ---	3 PLACES ± --- ± ---	DRAWN BY DATE	TITLE		
	$\nabla = 0$	2 PLACES ± --- ± ---	1 PLACE ± --- ± ---	EL IN 2013/09/24	SMB JACK, FAKRA,R/A		
		0 PLACE ± --- ± ---		CHECKED BY DATE	PCB 50 OHMS T&R		
				JOANNE 2013/09/24	SMB-J/PCB/RA		
				APPROVED BY DATE	molex		
				YCHENG 2015/10/13	DOCUMENT NO. SD-73403-650		
				MATERIAL NO.	SHEET NO. 4 OF 5		
				ANGULAR ± 2 °	SEE SHEET 2		
				DRAFT WHERE APPLICABLE MUST REMAIN WITHIN DIMENSIONS	THIS DRAWING CONTAINS INFORMATION THAT IS PROPRIETARY TO MOLEX INCORPORATED AND SHOULD NOT BE USED WITHOUT WRITTEN PERMISSION		

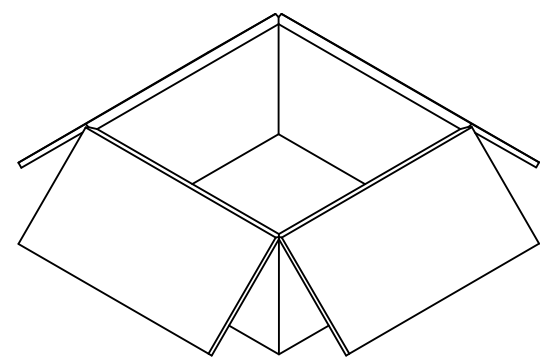
1b_frame_C_P_AM_T Rev. G 2012/01/11 12 11 10 9 8 7 6 5 4 3 2 1



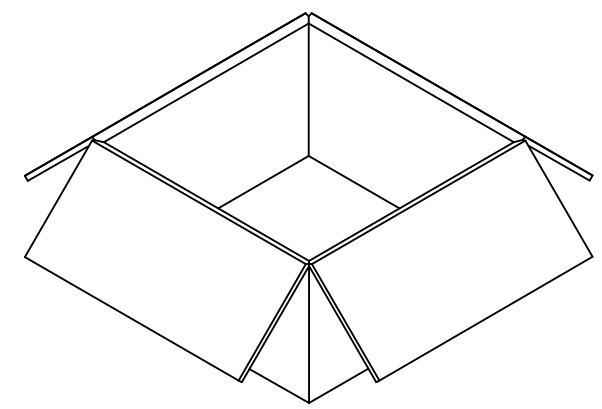
73403-650*



250 SET PER 13" REEL



1000 SET PER INNER
CARTON BOX
343 X 343 X 188 REF.



1000 SET PER OUTER
CARTON BOX
394 X 391 X 212 REF.

SEE SHEET 1 EC NO: URF-2016-0255 DRW: ELIN 2013/09/24 CHKD: DRW: ELIN APPR: YCHENG 2015/10/13	DESCRIPTION QUALITY SYMBOLS ▽=0 ▽=0 ▽=0	GENERAL TOLERANCES (UNLESS SPECIFIED)		DIMENSION STYLE	SCALE	DESIGN UNITS	THIRD ANGLE PROJECTION	
				MM/IN	1:1	METRIC		
				DRAWN BY DATE	TITLE			
				CHECKED BY DATE	SMB JACK, FAKRA,R/A PCB 50 OHMS T&R SMB-J/PCB/RA			
A	REV			APPROVED BY DATE	DOCUMENT NO.			
				YCHENG 2015/10/13	SD-73403-650			
				MATERIAL NO.	SHEET NO.			
				SEE SHEET 2	5 OF 5			
DRAFT WHERE APPLICABLE MUST REMAIN WITHIN DIMENSIONS				THIS DRAWING CONTAINS INFORMATION THAT IS PROPRIETARY TO MOLEX INCORPORATED AND SHOULD NOT BE USED WITHOUT WRITTEN PERMISSION				