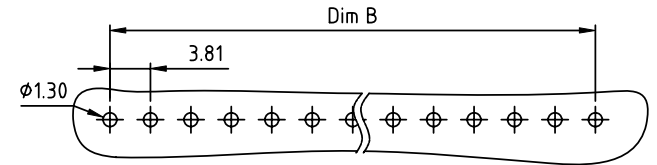
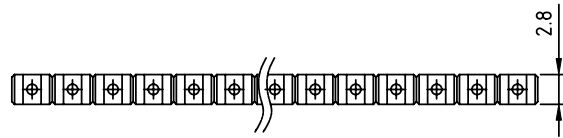
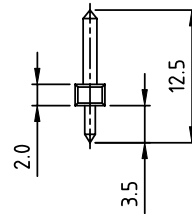
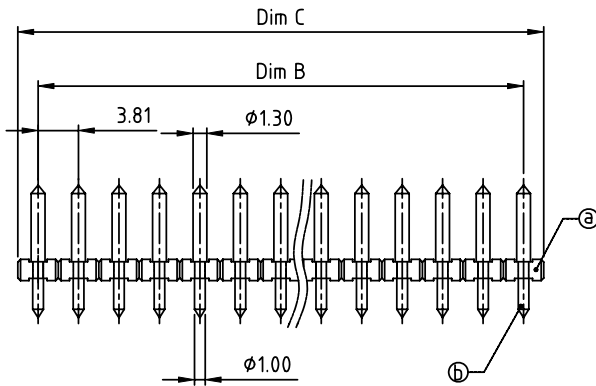


PRODUCT NUMBER	PITCH
OPxx42x000J0G	3.81 mm



RECOMMENDED P.C.B LAYOUT  
TOP VIEW



Material:

- Item ① Insulator(housing): Thermoplastic (UL94V-0)
- Item ② Contact pin: Brass, Tin or Au plated.

Electrical:

- Voltage rating: 300V
- Current rating: 10A
- Withstanding Voltage: 1.6KV
- Operating temperature: -40°C to +115°C
- Soldering temperature: 260°C±5°C/5 Sec
- Safety Approval:

DIMENSION

Dim B	(N-1)×3.81
Dim C	N×3.81

N=Number of poles

Poles	Tolerance
2p-5p	±0.10
6p-9p	±0.15
10p-13p	±0.20
14p-17p	±0.25
18p-24p	±0.30

PART NO.: OP xx 42 x 0 00J0 G

- Solid block
- No. of poles
- 02 2 poles
- 03 3 poles
- ... ..
- 24 24 poles
- 0 Tin plating 120u" Min
- 1 Gold plating 10u"
- 2 Gold flash
- RoHS compliant (lead<4%) In copper Alloy

mat'l. code		surface ASME Y14.5	tolerance ASME Y14.5	projection	product family
ltr ecn no dr date		tolerances unless otherwise specified			TERMINAL BLOCK
		angles	X.±0.5	MM	title
		X*±1"	X.X±0.3	scale	TERMINAL BLOCK
			X.XX±0.1		PLUGGABLE SOCKET,VERTICAL
		dr	EVIN ZHONG 041714		dwg no
		enr	EVIN ZHONG 041714		sheet 1 of 1
		chr	HANKE FENG 041714		size
		appd	SHI JUN 041714		A4
sheet index	revision sheet	A	1		type
					CUSTOMER Drawing