

6

5

4

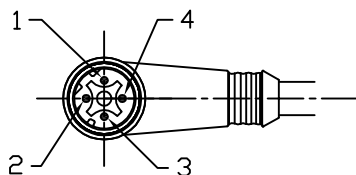
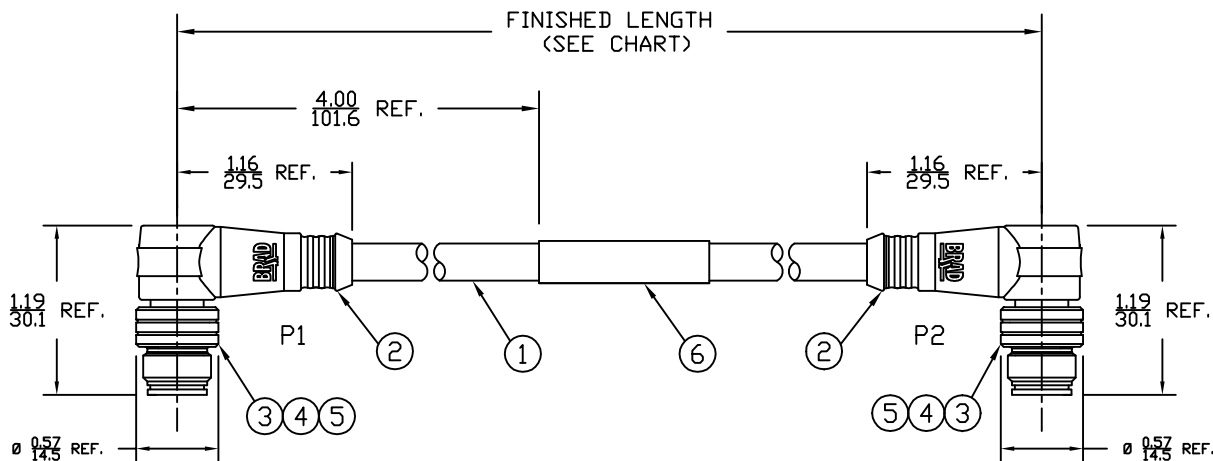
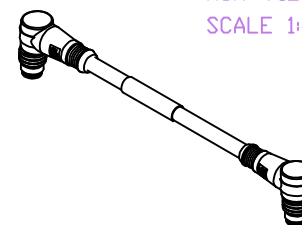
3

2

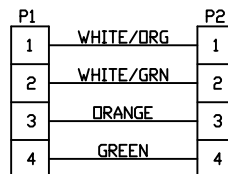
1

PART NUMBER	ENGINEERING NO.	LENGTH ± TOLERANCE
1300480179	E11A06315M010	3' 3" +2.19'/-0' [ 1M +55.6/-0 mm ]
1300480183	E11A06315M050	16' 4" +6.5'/-0' [ 5M +165.0/-0 mm ]

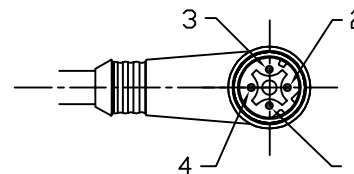
AUX VIEW  
SCALE 1:4



MALE- FACE VIEW



WIRING DIAGRAM



MALE- FACE VIEW

## NOTES:

- 1) MATERIAL: SEE TABLE
- 2) FINISHES: SEE TABLE
- 3) CABLE: #26/4 SHIELDED PVC
- 4) ELECTRICAL DATA:  
ACCORDING TO CAT5e ETHERNET STANDARD  
MAX. VOLTAGE: 30V  
MAX. CURRENT 1.5A
- 5) ENVIRONMENTAL:  
PROTECTION IP67  
TEMPERATURE RANGE: -20°C TO 75°C
- 6) WRAP LABEL IS MARKED WITH P/N, DATE CODE,  
VOLTAGE & AMPERAGE.
- 7) ASSEMBLY IS RoHS COMPLIANT.

ITEM	QTY.	DESCRIPTION	MATERIAL	FINISH
6	1	LABEL	PLASTIC FILM	BLACK/YELLOW
5	2	INSERT	PUR	BLACK
4	8	PIN CONTACT	COPPER ALLOY	GOLD PLATED
3	2	M12 COUPLING NUT	BRASS	NICKEL
2	2	OVERMOLD	PUR	BLACK
1	1	ETHERNET CABLE-CAT5E	PVC JACKET	TEAL

SD RELEASE EC NO: WEL2010-0005 7/13/09 DRWN: VOU CHKD: BWOODMAN APPR: JFMURPHY 2009/07/20	REV	DESCRIPTION
	1	

QUALITY  
SYMBOLS  
▽=0  
▽C=0

GENERAL TOLERANCES  
(UNLESS SPECIFIED)

	mm	INCH
4 PLACES	±----	±----
3 PLACES	±----	±.005
2 PLACES	±----	±.010
1 PLACE	±----	±.020

ANGULAR ± 1/2°

DRAFT WHERE APPLICABLE  
MUST REMAIN  
WITHIN DIMENSIONS

DIMENSION STYLE  
IN/MM

DRAWN BY	DATE
VOU	2009/07/06
CHECKED BY	DATE
BWOODMAN	2009/07/31
APPROVED BY	DATE
---	---

MATERIAL NO.  
SEE CHART

SIZE  
A

SCALE  
3:4DESIGN UNITS  
INCH

THIRD ANGLE  
PROJECTION

TITLE  
MICRO-CHANGE CABLE ASSY  
4P M/MP 90/90 D-CODE  
#26/4 SHIELDED PVC

molex  
MOLEX INCORPORATED

DOCUMENT NO.  
SD-120108-026

SHEET NO.  
1 OF 1

THIS DRAWING CONTAINS INFORMATION THAT IS PROPRIETARY TO MOLEX  
INCORPORATED AND SHOULD NOT BE USED WITHOUT WRITTEN PERMISSION

6

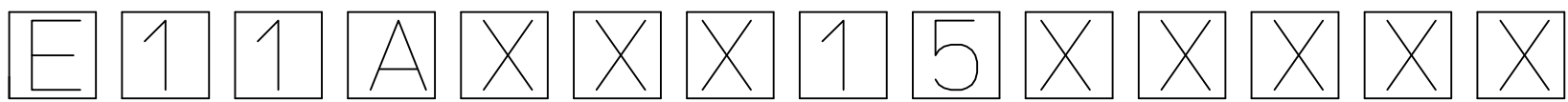
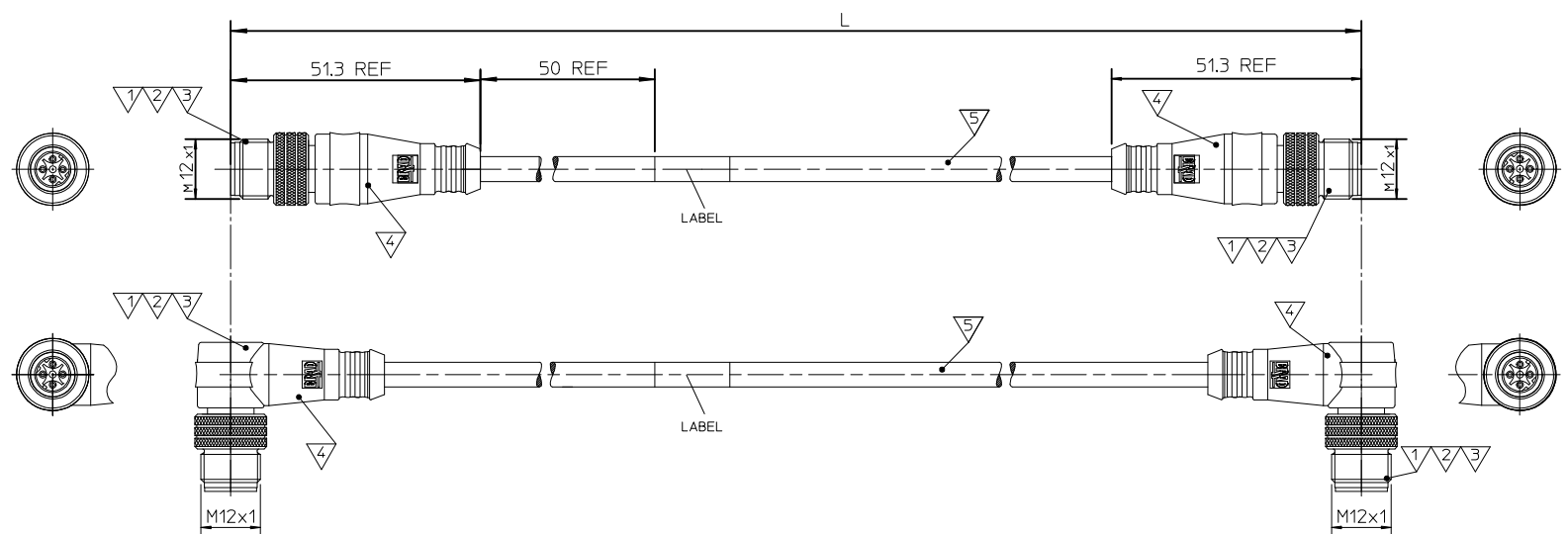
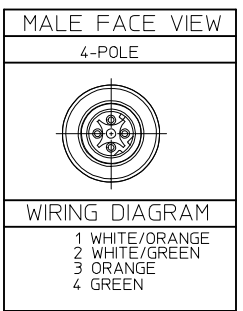
5

4

3

2

1



Networ Protocol: E-Ethernet  
 First and Second Connector: 1=M12 Threaded 4 Pole D-code  
 Wiring Scheme: A=4 Pole  
 HEAD TYPE: 060 Plugs male and male straight, 063 Plugs male 90° and male 90°  
 Cable type: 26AWG, 7/34 STRANDED TINNED COPPER, PVC, TEAL  
 LENGTH UNIT: C-cm, M-m, K-km, F-feet  
 LENGTH: Example: 020 - 2M, 060 - 6M, 100 - 10M  
 OPTIONS: D- Decoupled (for Shielded version only)

Over	Up to and including	Tolerance (+)
0	305	+19
305	915	+45
915	1830	+56
1830	3660	+89
3660	7320	+165
7320	14640	+317
14640	30500	+610
30500	>	2 % of length

CONNECTOR SPECIFICATION:

VOLTAGE RATING	max 30V
AMPERAGE RATING	1.5 A
PROTECTION	IP67
OPERATING TEMPERATURE	-20°C TO 75°C

ITEM	PART	MATERIAL	FINISH
5	CABLE	1302100082	---
4	OVERMOULDING	TPU UF NATURAL C98A10	---
4	OVERMOULDING	MASTERBATCH COLORANT	---
3	COUPLING NUT	SEE SPECIAL TYPES	---
2	PIN CONTACT	COPPER ALLOY	GOLD OR NICKEL PLATED
1	INSERT	PUR	BLACK

<b>PN ADDED</b> EC NO: IPG2014-1381 DRWINDSTACHOWIAK 2014/02/03 CHKD: JMARSZALEK 2014/02/03 APPR: MIWASIECZKO 2014/02/04	QUALITY SYMBOLS	GENERAL TOLERANCES (UNLESS SPECIFIED)	DIMENSION STYLE	SCALE	DESIGN UNITS	FIRST ANGLE PROJECTION	
	▽=0 ◻=0	4 PLACES ± --- ± --- 3 PLACES ± --- ± --- 2 PLACES ± --- ± --- 1 PLACE ± --- ± --- 0 PLACE ± --- ± ---	mm INCH DRAWN BY: MDYSZEWSKA CHECKED BY: HWALCZAK APPROVED BY: MIWASIECZKO DATE: 2012/11/24	MM ONLY DATE: 2012/11/24	---	METRIC	
	ANGULAR ± --- ° DRAFT WHERE APPLICABLE MUST REMAIN WITHIN DIMENSIONS	MATERIAL NO.	TITLE: CSE ETH ETH 4P DC PVC XM DE SHLD NI	DATE: 2013/01/21			
	SEE PAGE 2	DOCUMENT NO. SD-130048-006	THIS DRAWING CONTAINS INFORMATION THAT IS PROPRIETARY TO MOLEX INCORPORATED AND SHOULD NOT BE USED WITHOUT WRITTEN PERMISSION		SHEET NO. 1 OF 2		

SEE CHART 1

1300480009	E11A06015M030
1300480010	E11A06015M200
1300480011	E11A06015M400
1300480122	E11A06015M010
1300480124	E11A06015M020
1300480126	E11A06015M050
1300480128	E11A06015M100
1300480130	E11A06015M150
1300480132	E11A06015M300
1300480303	E11A06015M500
1300480304	E11A06015M680
1300488007	E11A06015M250
1300488012	E11A06015M040
1300488108	E11A06015M600
1300488109	E11A06015M800
1300480177	E11A06315M006
1300480179	E11A06315M010
1300480181	E11A06315M020
1300480183	E11A06315M050
1300480185	E11A06315M100
1300488073	E11A06315M030

PN ADDED EC NO: IPG2014-1381 DRWINGDSTACHOWIAK 2014/02/03 CHKD: JMARSZALEK 2014/02/03 APPR: MIWASIECZKO 2014/02/04	QUALITY SYMBOLS	GENERAL TOLERANCES (UNLESS SPECIFIED)		DIMENSION STYLE MM ONLY		SCALE ---	DESIGN UNITS METRIC	FIRST ANGLE PROJECTION		
	=0 =0	4 PLACES	mm	INCH	DRAWN BY	DATE	TITLE CSE ETH ETH 4P DC PVC XM DE SHLD NI			
		3 PLACES	± ---	± ---	MDYSZEWSKA	2012/11/24				
		2 PLACES	± ---	± ---	CHECKED BY	DATE				
1 PLACE		± ---	± ---	HWALCZAK	2012/11/24					
0 PLACE	± ---	± ---	APPROVED BY	DATE	MATERIAL NO.		DOCUMENT NO.		SHEET NO.	
	ANGULAR ± --- °	DRAFT WHERE APPLICABLE MUST REMAIN WITHIN DIMENSIONS		SEE CHART 1		SD-130048-006		2 OF 2		
				SIZE A3		THIS DRAWING CONTAINS INFORMATION THAT IS PROPRIETARY TO MOLEX INCORPORATED AND SHOULD NOT BE USED WITHOUT WRITTEN PERMISSION				