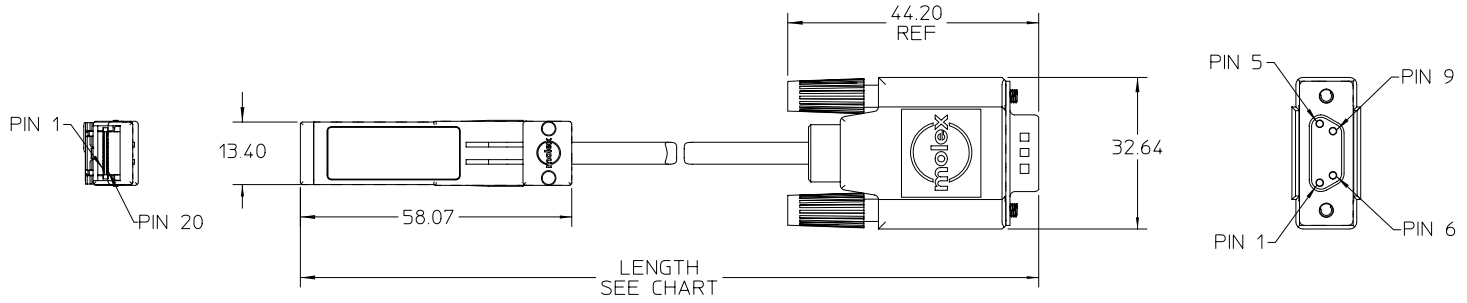
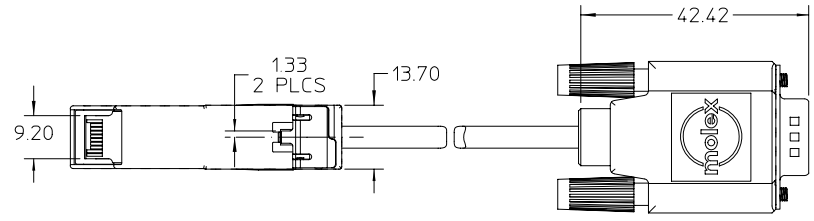
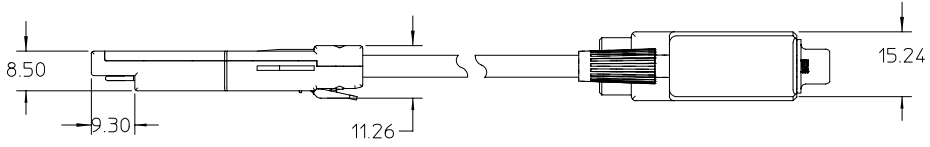


WIRING DIAGRAM			
SFP		DB-9	
PIN	SIGNAL	PIN	SIGNAL
19	Tx-	9	Rx-
18	Tx+	5	Rx+
13	Rx+	1	Tx+
12	Rx-	6	Tx-



SFP MALE DB-9



PART NUMBER	LENGTH
73929-1001	1 M ± 0.05 M
73929-1002	3 M ± 0.07 M
73929-1003	5 M ± 0.08 M
73929-1005	2 M ± 0.06 M
73929-1006	4 M ± 0.07 M

SFP NOTES:

- MATERIALS
BACKSHELLS - NICKEL PLATED ZINC
LATCH - GLASS FILLED POLYCARBONATE
PCB - FR-4
RIVETS - TIN PLATED STEEL
- IMPEDANCE MATCHING SFP (100 OHMS) TO DB-9 (150 OHMS)

DB-9 NOTES:

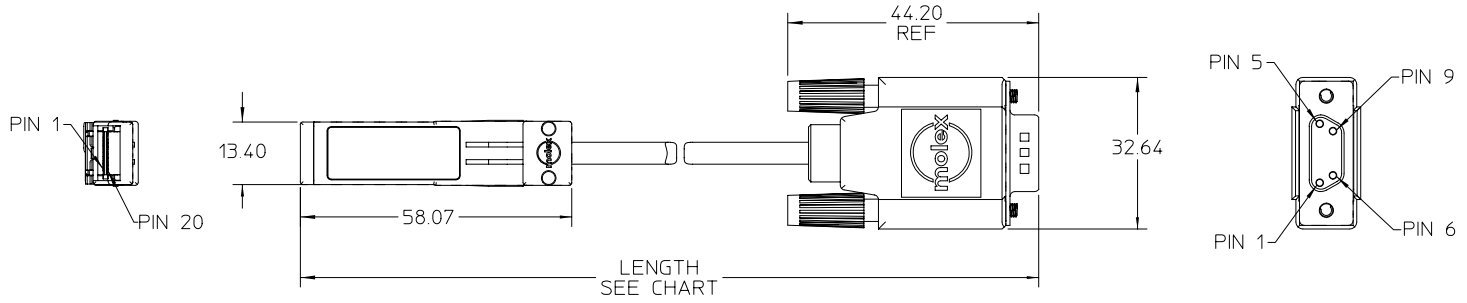
- MATERIALS
CONTACTS - GOLD PLATED BRASS
SHIELD - TIN PLATED STEEL
BOOT - BLACK PVC
JACKSCREWS
SCREW - STEEL
HEAD - PVC
- CHARACTERISTIC IMPEDANCE 150 ± 10 OHMS MEASURED DIFFERENTIAL

CABLE NOTES:

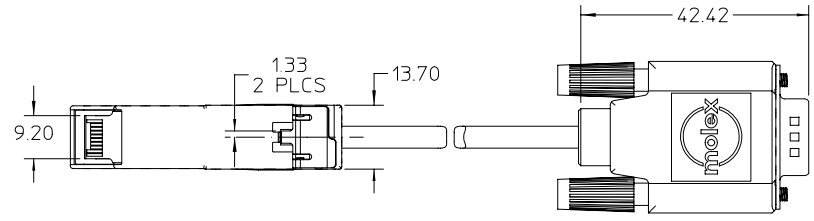
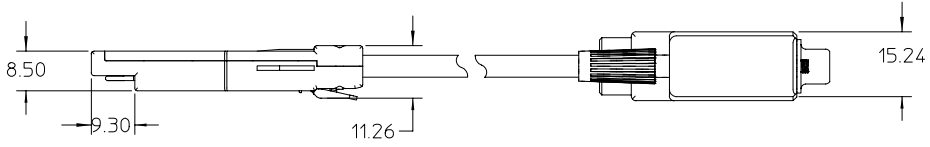
- CHARACTERISTIC IMPEDANCE 150 ± 10 OHMS MEASURED DIFFERENTIAL
- SEE MOLEX DRAWINGS SD-71153-7*** FOR FURTHER DETAILS

EC NO: UOT20026803 DRAWN: DSLEWIS 2002/03/08 CHK: DDOYE 2002/02/12 APPR: DDOYE 2002/02/14	QUALITY SYMBOLS	GENERAL TOLERANCES (UNLESS SPECIFIED)	SCALE 1:1	DESIGN UNITS METRIC	THIRD ANGLE PROJECTION	REVISE ON CAD ONLY	
	-0 C=0	4 PLACES ± --- ± --- 3 PLACES ± --- ± --- 2 PLACES ± 0.25 ± --- 1 PLACE ± 0.3 ± ---	DIMENSION STYLE MM ONLY	TITLE			
		DRAFT WHERE APPLICABLE	APPROVED BY DATE DLD 1002/12/17	MOLEX INCORPORATED MATERIAL NO. 739291001 DOCUMENT NO. SD-73929-100 SHEET NO. 1 OF 1			
		MUST REMAIN WITHIN DIMENSIONS	THIS DRAWING CONTAINS INFORMATION THAT IS PROPRIETARY TO MOLEX INCORPORATED AND SHOULD NOT BE USED WITHOUT WRITTEN PERMISSION				

WIRING DIAGRAM			
SFP		DB-9	
PIN	SIGNAL	PIN	SIGNAL
19	Tx-	9	Rx-
18	Tx+	5	Rx+
13	Rx+	1	Tx+
12	Rx-	6	Tx-



SFP MALE DB-9



PART NUMBER	LENGTH
73929-1001	1 M ± 0.05 M
73929-1002	3 M ± 0.07 M
73929-1003	5 M ± 0.08 M
73929-1005	2 M ± 0.06 M
73929-1006	4 M ± 0.07 M

SFP NOTES:

- MATERIALS
 BACKSHELLS - NICKEL PLATED ZINC
 LATCH - GLASS FILLED POLYCARBONATE
 PCB - FR-4
 RIVETS - TIN PLATED STEEL
- IMPEDANCE MATCHING SFP (100 OHMS) TO DB-9 (150 OHMS)

DB-9 NOTES:

- MATERIALS
 CONTACTS - GOLD PLATED BRASS
 SHIELD - TIN PLATED STEEL
 BOOT - BLACK PVC
 JACKSCREWS
 SCREW - STEEL
 HEAD - PVC
- CHARACTERISTIC IMPEDANCE 150 ± 10 OHMS MEASURED DIFFERENTIAL

CABLE NOTES:

- CHARACTERISTIC IMPEDANCE 150 ± 10 OHMS MEASURED DIFFERENTIAL
- SEE MOLEX DRAWINGS SD-71153-7*** FOR FURTHER DETAILS

EC NO: UOT20026803 DRAWN: DSLEWIS 2002/03/08 CHK: DDOYE 2002/02/12 APPR: DDOYE 2002/02/14	QUALITY SYMBOLS	GENERAL TOLERANCES (UNLESS SPECIFIED)	SCALE 1:1	DESIGN UNITS METRIC	THIRD ANGLE PROJECTION	REVISE ON CAD ONLY	
	-0 C=0	4 PLACES ± --- ± --- 3 PLACES ± --- ± --- 2 PLACES ± 0.25 ± --- 1 PLACE ± 0.3 ± ---	DIMENSION STYLE MM ONLY	TITLE			
		DRAFT WHERE APPLICABLE	APPROVED BY DATE DLD 1002/12/17	SFP PLUG TO MALE DB-9 FIBRE CHANNEL (150 OHM) CABLE ASSEMBLY			
		MUST REMAIN WITHIN DIMENSIONS	APPROVED BY DATE DLD 1002/12/17	MATERIAL NO. 739291001	DOCUMENT NO. SD-73929-100	SHEET NO. 1 OF 1	
THIS DRAWING CONTAINS INFORMATION THAT IS PROPRIETARY TO MOLEX INCORPORATED AND SHOULD NOT BE USED WITHOUT WRITTEN PERMISSION						B	