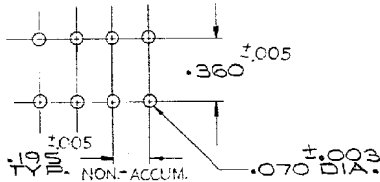
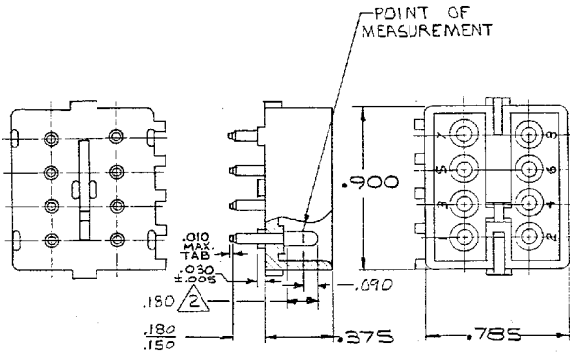


DRAWING MADE IN AMERICAN PROJECTION



RECOMMENDED LAYOUT TO .062 THICK P.C. BOARD

- PARTS COMPLY WITH TE SOLDERABILITY SPEC. NO. 109-11-3
- CONTACT IS PLATED OVERALL WITH .00050 NICKEL, THEN .000030 GOLD OVER CONTACT LENGTH INDICATED, AND ITIN PLATED ON SOLDER TAIL END.
- DIMENSION SHOWN REPRESENT PRODUCT IN DRY CONDITION. ADDITIONAL 2% GROWTH DUE TO END USE LOCATION MOISTURE ABSORPTION MAY OCCUR AND SHOULD BE ACCOUNTED FOR.

SUPERSEDED BY 1586518-2

| | | | | | | | | | |
|--------------|----------|-------------|-----------------|-------|--------------|-------------|--------------|--------|------|
| ASSEMBLY NO. | 350212-2 | HGS. MATL.- | NYLON | COLOR | NATURAL | PIN MATL. - | COPPER ALLOY | FINISH | GOLD |
| ASSEMBLY NO. | 350212-1 | HGS. MATL.- | NYLON - NATURAL | COLOR | Copper Alloy | PIN MATL. - | PRE-TIN | FINISH | |

DIMENSIONS IN INCHES. DO NOT SCALE PRINT.

| REV | DESCRIPTION | BY | CHK | DATE |
|-----|---------------------------------|----|-----|-------------|
| P3 | REVISED PER ECR-21-117185 | PJ | VS | 2007 |
| P2 | REVISED PER ECR-10-009130 | JB | DZ | 2006 |
| P1 | REVISED PER ECR-13-008342 | AV | RP | 13/NOV/2013 |
| P | OBS 1-1-2-1-9-1 PER ECR CM-2706 | NG | RS | 8/27/09 |
| N | OBS 5-1-1-0-1 PER CM 2213 | RS | RS | 8/27/09 |
| LTN | REVISION RECORD | DR | CHK | DATE |

| QTY | DESCRIPTION | QTY | DESCRIPTION | QTY | DESCRIPTION | QTY | DESCRIPTION | QTY | DESCRIPTION | QTY | DESCRIPTION | QTY | DESCRIPTION | QTY | DESCRIPTION | QTY | DESCRIPTION | QTY | DESCRIPTION |
|--------------------------------------|-------------|--|-------------|-----|-------------|-----|-------------|-----|-------------|-----|-------------|-----|-------------|-----|-------------|-----|-------------|-----|-------------|
| REQUIRED PER ASSEMBLY | | © 1978 BY AMP INCORPORATED. ALL RIGHTS RESERVED. AMP PRODUCTS COVERED BY PATENTS AND/OR PATENTS PENDING. | | | | | | | | | | | | | | | | | |
| MATERIAL AND FINISH | | SEE TABLE | | | | | | | | | | | | | | | | | |
| WIRE - RANGE - INSULATION | | WIRE - RANGE - INSULATION | | | | | | | | | | | | | | | | | |
| TOLERANCE EXCEPT AS NOTED | | TOLERANCE EXCEPT AS NOTED | | | | | | | | | | | | | | | | | |
| SCALE | | SCALE | | | | | | | | | | | | | | | | | |
| LDC | | LDC | | | | | | | | | | | | | | | | | |
| NO | | NO | | | | | | | | | | | | | | | | | |
| NAME | | NAME | | | | | | | | | | | | | | | | | |
| CIRCUIT MATE-N-LOK P.C. BOARD HEADER | | CIRCUIT MATE-N-LOK P.C. BOARD HEADER | | | | | | | | | | | | | | | | | |

53

7

6

5

4

3

2

1