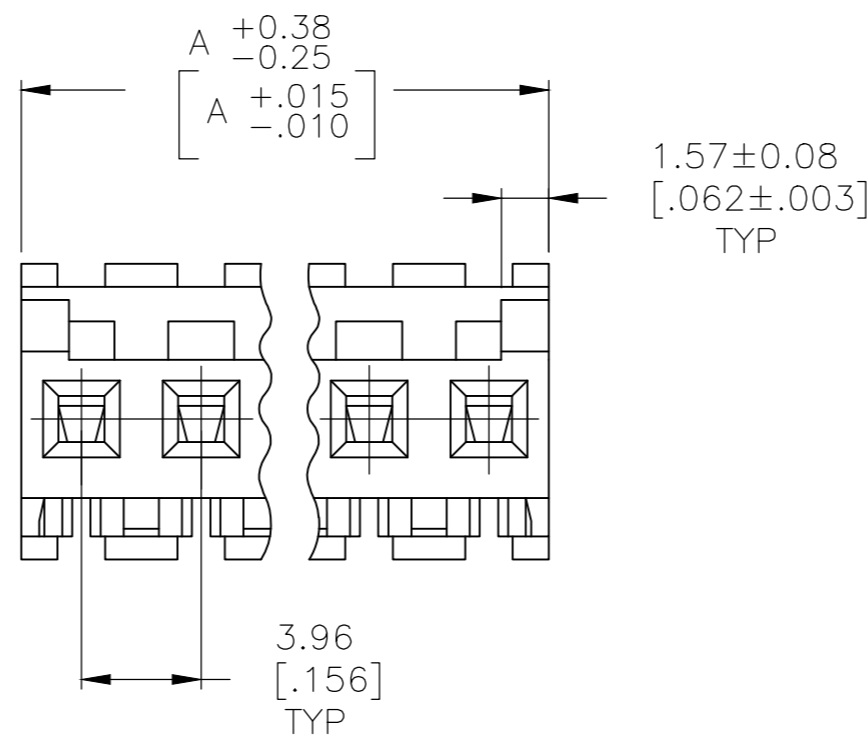
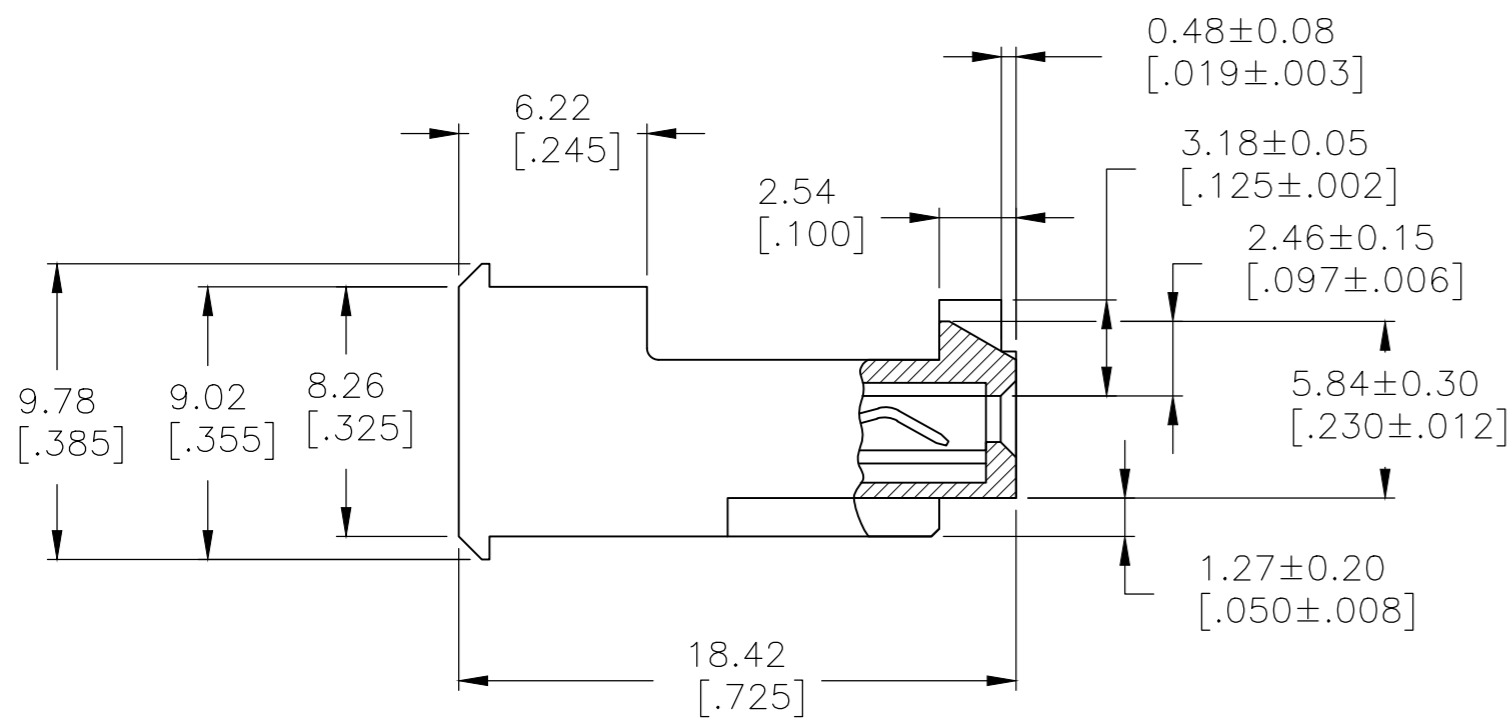
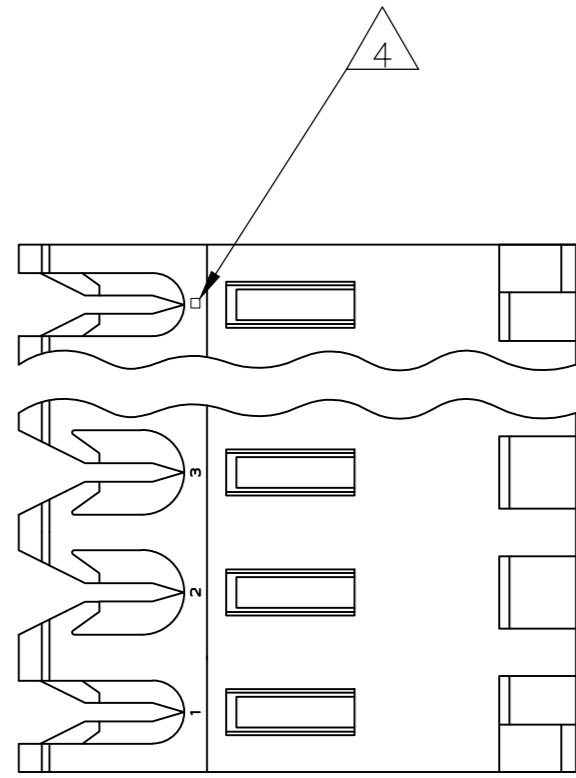


THIS DRAWING IS UNPUBLISHED. RELEASED FOR PUBLICATION
 © COPYRIGHT - By - TE CONNECTIVITY ALL RIGHTS RESERVED.

| LOC | DIST | REVISIONS | | | | | |
|-----|------|-----------|-----|---------------------------|-----------|-----|------|
| | | P | LTR | DESCRIPTION | DATE | DWN | APVD |
| CM | 54 | E | | REVISED PER ECR-20-000822 | 27MAY2020 | PC | SW |

- 1 MATERIAL: CONNECTOR - NYLON UL94V-2 (RED).
CONTACTS - 0.30[.012] THICK COPPER ALLOY
(BRIGHT TIN-LEAD 0.00203[.000080] MIN. THICK FOR CONTACTS 644467-2 THRU 1-644467-4)
(MATTE WHISKER MITIGATED TIN 0.00203[.000080] MIN THICKNESS OVER NICKEL UNDERPLATE FOR 3-644467-2 THRU 4-644467-4).
- 2 CONTACTS ACCEPT 22 AWG WIRE WITH 2.41[.095] MAX INSULATION DIAMETER.
- 3 CONTACTS MUST ACCEPT 1.14±0.03[.045±.001] SQUARE POST AND REMAIN LOCKED IN POSITION.
- 4 IDENTIFICATION NUMBER FOR LAST CIRCUIT MAY NOT APPEAR ON ALL ASSEMBLIES.
- 5 DIMENSIONS IN BRACKETS ARE IN INCHES.
- 6 HOUSING FEATURES ARE: FEED-THRU WITH LOCKING RAMP AND POLARIZING TAB.
- 7 OBSOLETE PARTS: OBSOLETE CIS STREAMLINING PER D.RENAUD/D.SINISI
- 8 OBSOLETE PARTS



| | | |
|---------------|----|-----------------------|
| 55.47 [2.184] | 14 | 4-644467-4 |
| 51.51 [2.028] | 13 | 4-644467-3 |
| 47.55 [1.872] | 12 | 4-644467-2 |
| 43.59 [1.716] | 11 | 4-644467-1 |
| 39.62 [1.560] | 10 | 4-644467-0 |
| 35.66 [1.404] | 9 | 3-644467-9 |
| 31.70 [1.248] | 8 | 3-644467-8 |
| 27.74 [1.092] | 7 | 3-644467-7 |
| 23.77 [.936] | 6 | 3-644467-6 |
| 19.81 [.780] | 5 | 3-644467-5 |
| 15.85 [.624] | 4 | 3-644467-4 |
| 11.89 [.468] | 3 | 3-644467-3 |
| 7.92 [.312] | 2 | 3-644467-2 |
| 7 SUPERSEDED | 14 | 1-644467-4 |
| 7 SUPERSEDED | 13 | 1-644467-3 |
| 8 SUPERSEDED | 12 | 1-644467-2 |
| | 11 | 1-644467-1 |
| 7 SUPERSEDED | 10 | 1-644467-0 |
| | 9 | 644467-9 |
| 7 SUPERSEDED | 8 | 644467-8 |
| 7 SUPERSEDED | 7 | 644467-7 |
| 8 SUPERSEDED | 6 | 644467-6 |
| | 5 | 644467-5 |
| | 4 | 644467-4 |
| | 3 | 644467-3 |
| | 2 | 644467-2 |
| DIM A | | NO. OF CIRCUITS |
| | | PART NO |

| | | | | |
|--|-------------|-------------------------------|---|----------------------|
| THIS DRAWING IS A CONTROLLED DOCUMENT. | | DWN B. LEWIS 12 FEB 91 | TE Connectivity | |
| DIMENSIONS: mm [INCHES] | | CHK R. SWING 12 FEB 91 | MTA 156 CONNECTOR ASSEMBLY, 22 AWG, STANDARD | |
| TOLERANCES UNLESS OTHERWISE SPECIFIED: | | APVD D. CLARK 20 FEB 91 | NAME | |
| 0 PLC ± - | 1 PLC ± - | PRODUCT SPEC 108-1051 | SIZE | |
| 2 PLC ± - | 3 PLC ± - | APPLICATION SPEC 114-1020 | CAGE CODE 00779 | DRAWING NO 644467 |
| 4 PLC ± - | ANGLES ± - | WEIGHT | SCALE 4:1 | SHEET 1 OF 1 |
| MATERIAL 1 | FINISH 1 | CUSTOMER DRAWING | | REV E |