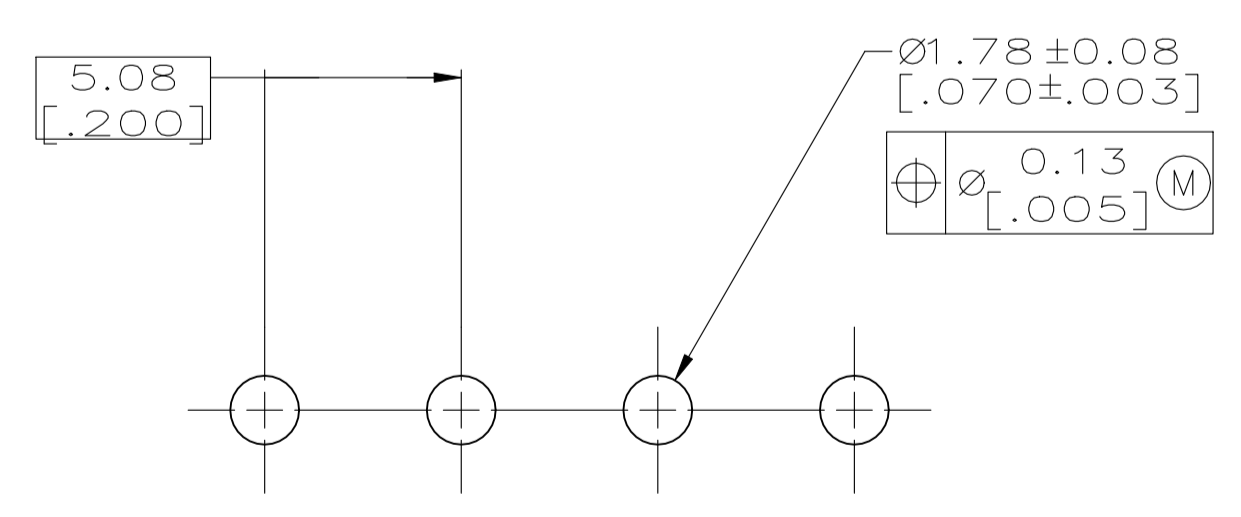
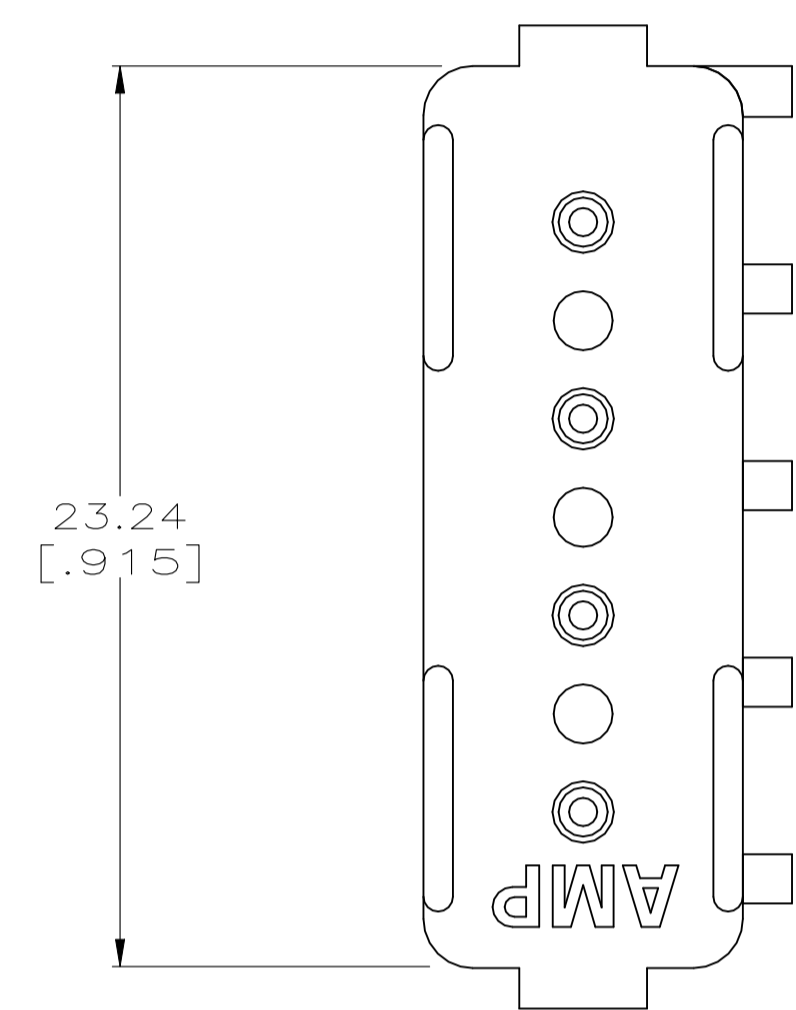
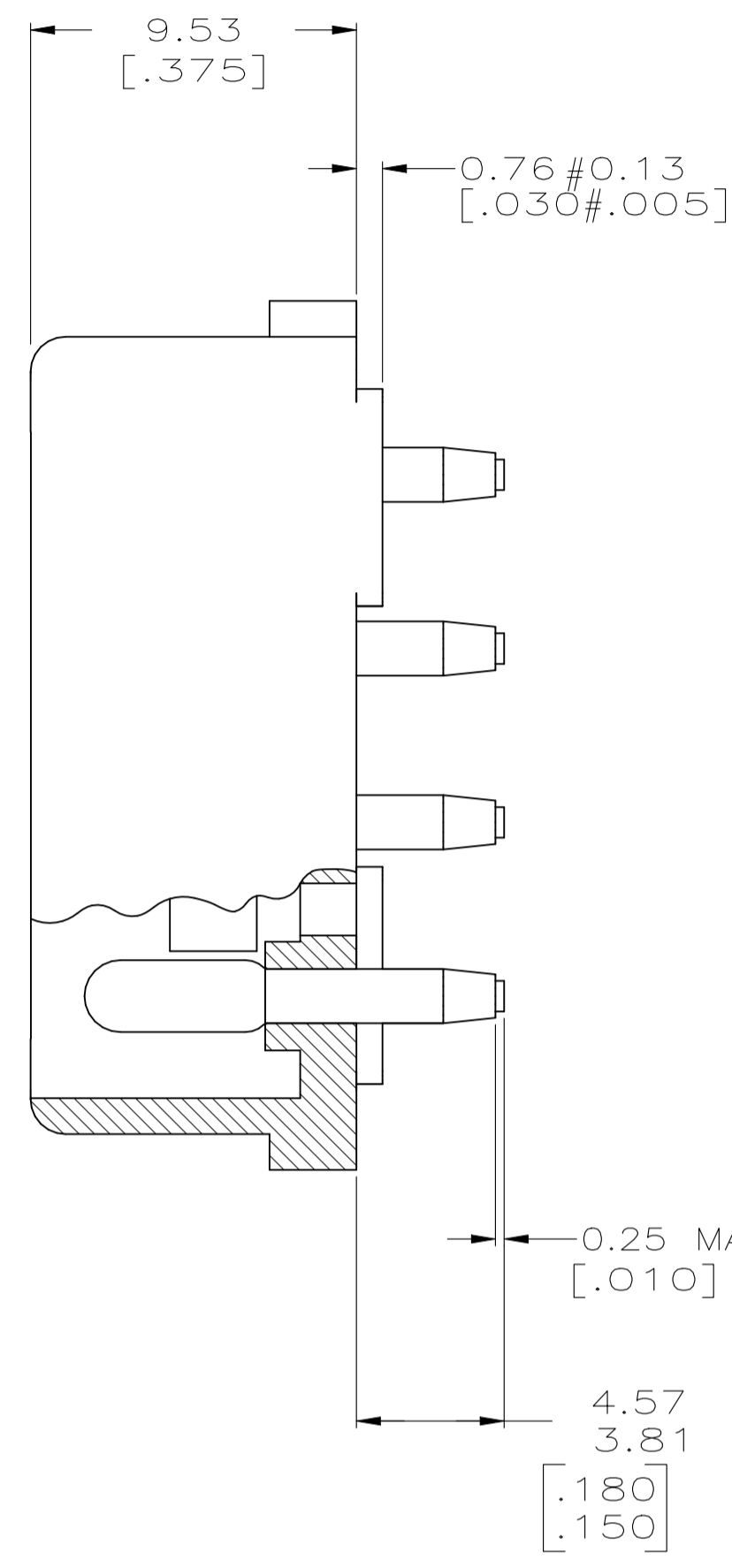
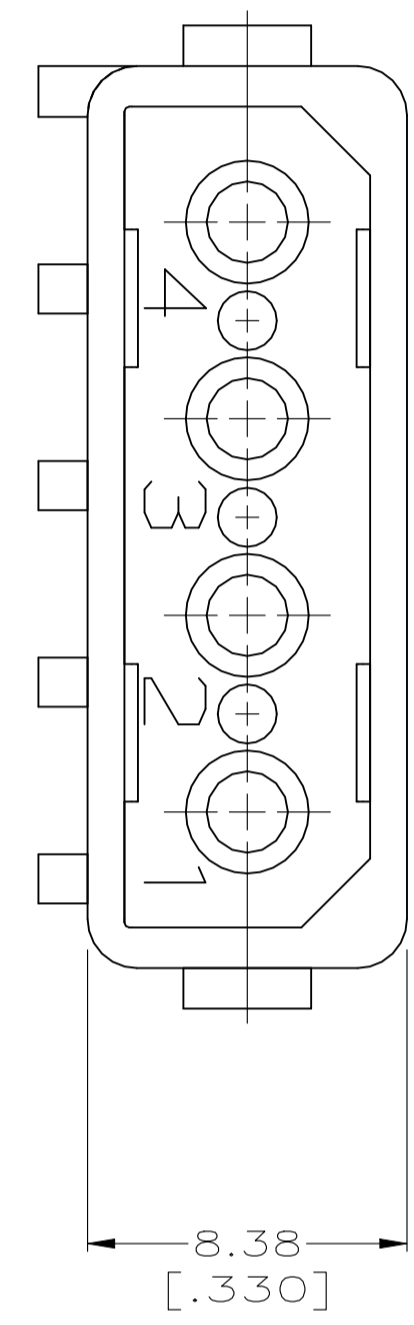
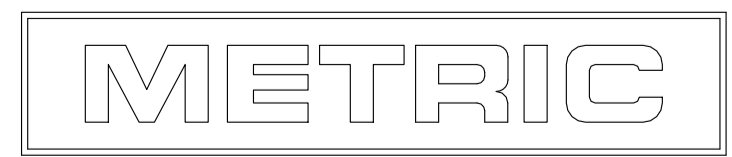


- 1 PARTS COMPLY WITH AMP SOLDERABILITY SPEC. 109-11-3.
- 3 MATERIAL: HOUSING - NYLON,UL94V-2,NATURAL
PIN - COPPER ALLOY,BRIGHT TIN
PLATED,0.0020 [.000080] MIN.THK.
- 4 DIMENSION SHOWN REPRESENT PRODUCT IN DRY CONDITION.
ADDITIONAL 2% GROWTH DUE TO END USE LOCATION
MOISTURE ABSORPTION MAY OCCUR AND SHOULD BE
ACCOUNTED FOR.



RECOMMENDED MOUNTING HOLE PATTERN
FOR 1.57 [.062] THICK P.C. BOARD



—	—	4	1586627-1
HEADER ASSY	PLUG	NO. OF POSITIONS	PART NUMBER
QTY PER TUBE		HEADER ASSEMBLY	

THIS DRAWING IS A CONTROLLED DOCUMENT.		DIN K WHITAKER 24JUNE2005		Tyco Electronics Corporation	
DIMENSIONS: mm [NCHES]		CHK D COLEY 24JUNE2005		Harrisburg, PA 17105-3608	
TOLERANCES UNLESS OTHERWISE SPECIFIED:		APP'D D COLEY 24JUNE2005		NAME	
0. PLC	± -	PRODUCT SPEC		HEADER ASSY, 4 CKT, COMMERCIAL MATE-N-LOK(TM)	
1. PLC	± -	APPLICATION SPEC		—	
2. PLC	± -	WEIGHT		—	
3. PLC	± 0.38 [.015]	SIZE		A1	
4. PLC	± -	CAGE CODE		00779	
ANGLES	± -	DRAWING NO		1586627	
MATERIAL	FINISH	RESTRICTED TO		—	
3	3	CUSTOMER DRAWING		SCALE 5:1 SHEET 1 of 1 REV A1	