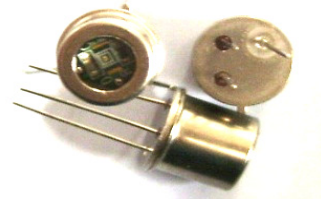


UVC LED Sensor Module

GUVCL-T21GH

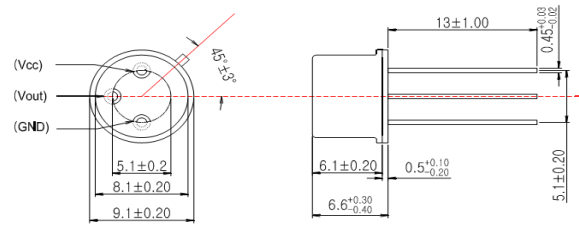


- Features**
- Single Supply Voltage Operation
 - Voltage Output
 - High Sensitivity and Good Solar Blindness
 - Small and Compact Size



- Applications**
- UV-C LED Monitoring (265,270,280nm)
 - Pure UV-C Monitoring
 - Sterilization Lamp Monitoring

Outline Diagrams and Dimensions(unit: mm)



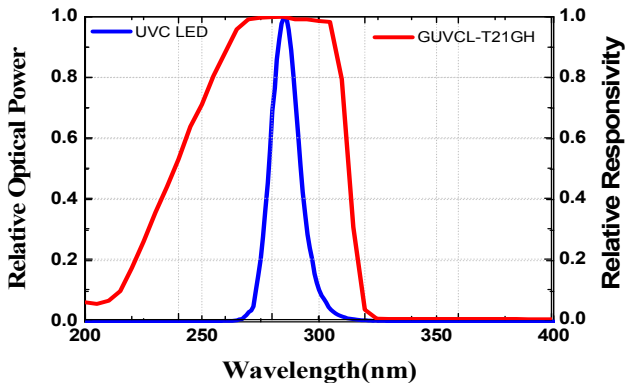
Absolute Maximum Ratings

Parameter	Symbol	Min.	Max.	Unit	Remark
Storage Temperature	T _{st}	-40	90	°C	
Operating Temperature	T _{op}	-30	85	°C	
Supply Voltage	V _{cc}		5.5	V	
Soldering Temperature	T _{sol}		260	°C	within 10 sec.

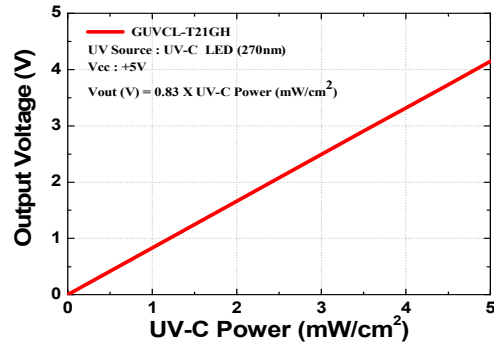
Characteristics (at 25°C)

Parameter	Symbol	Min.	Typ.	Max.	Unit	Remark
Supply Voltage	V _{cc}	1.8		5.5	V	DC
Supply Current	I _Q		50		μA	
Responsivity	R _p		0.7		mV/nW	at 270 nm
Spectral Detection Range	λ	220		320	nm	10% of R _p
Output Voltage	V _{out}		0.83		V	UVC LED, 1 mW/cm ²
Offset Voltage	V _{off}		0.01		V	
Detection Power Range	P	0		6.0	mW/cm ²	V _{cc} =5V
Rising Time	T _r		3		ms	

Responsivity Curve



Output Voltage along UV Power



Caution ESD can damage the device hence please avoid ESD.