

N-Channel Enhancement Mode Power MOSFET

General Description

The RM60N75LD uses advanced trench technology and design to provide excellent $R_{DS(ON)}$ with low gate charge. It can be used in a wide variety of applications.

Product Summary

BV_{DSS}	typ.	84	V
$R_{DS(ON)}$	typ.	6.8	m Ω
	max.	8.5	m Ω
I_D		60	A

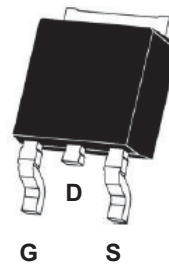
Features

- $V_{DS}=75V$; $I_D=60A@V_{GS}=10V$;
 $R_{DS(ON)}<8.5m\Omega @V_{GS}=10V$
- Special process technology for high ESD capability
- Special designed for Convertors and power controls
- High density cell design for ultra low Rdson
- Fully characterized Avalanche voltage and current
- Good stability and uniformity with high E_{AS}
- Excellent package for good heat dissipation

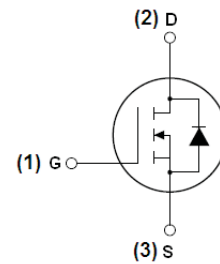
100% UIS TESTED!

Application

- Power switching application
- Hard Switched and High Frequency Circuits
- Uninterruptible Power Supply



TO-252-2L top view



Schematic diagram

Package Marking and Ordering Information

Device Marking	Device	Device Package	Reel Size	Tape width	Quantity
60N75	RM60N75LD	TO-252-2L	-	-	-

Table 1. Absolute Maximum Ratings ($T_C=25^\circ C$)

Parameter	Symbol	Value	Unit
Drain-Source Voltage ($V_{GS}=0V$)	V_{DS}	75	V
Gate-Source Voltage ($V_{DS}=0V$)	V_{GS}	± 20	V
Drain Current (DC) at $T_C=25^\circ C$	$I_{D(DC)}$	60	A
Drain Current (DC) at $T_C=100^\circ C$	$I_{D(DC)}$	42	A
Drain Current-Continuous@ Current-Pulsed (Note 1)	$I_{DM(pluse)}$	310	A
Peak diode recovery voltage	dv/dt	30	V/ns
Maximum Power Dissipation($T_C=25^\circ C$)	P_D	140	W
Derating factor		0.95	W/ $^\circ C$
Single pulse avalanche energy (Note 2)	E_{AS}	300	mJ
Operating Junction and Storage Temperature Range	T_J, T_{STG}	-55 To 175	$^\circ C$

Notes 1.Repetitive Rating: Pulse width limited by maximum junction temperature

2.EAS condition: $T_J=25^\circ C, V_{DD}=37.5V, V_G=10V, L=0.5mH$

Table 2. Thermal Characteristic

Parameter	Symbol	Value	Unit
Thermal Resistance, Junction-to-Case (Maximum)	R_{thJC}	1.05	°C/W
Thermal Resistance, Junction-to-Ambient (Maximum)	R_{thJA}	50	°C/W

Table 3. Electrical Characteristics ($T_C=25^\circ\text{C}$ unless otherwise noted)

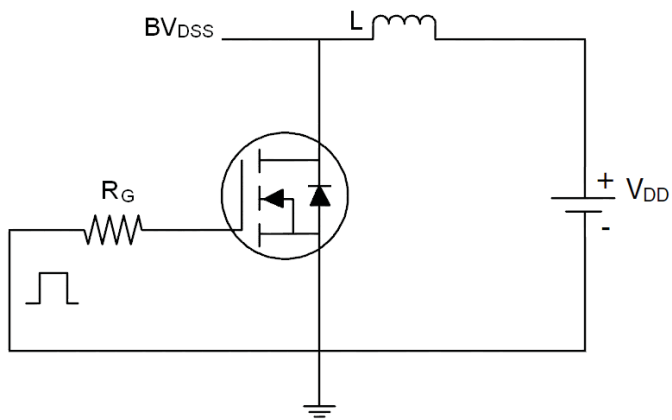
Parameter	Symbol	Condition	Min	Typ	Max	Unit
On/off states						
Drain-Source Breakdown Voltage	BV_{DSS}	$V_{GS}=0V, I_D=250\mu A$	75	84	-	V
Zero Gate Voltage Drain Current($T_C=25^\circ\text{C}$)	I_{DSS}	$V_{DS}=75V, V_{GS}=0V$	-	-	1	μA
Zero Gate Voltage Drain Current($T_C=125^\circ\text{C}$)	I_{DSS}	$V_{DS}=75V, V_{GS}=0V$	-	-	10	μA
Gate-Body Leakage Current	I_{GSS}	$V_{GS}=\pm 20V, V_{DS}=0V$	-	-	± 100	nA
Gate Threshold Voltage	$V_{GS(th)}$	$V_{DS}=V_{GS}, I_D=250\mu A$	2	3	4	V
Drain-Source On-State Resistance	$R_{DS(on)}$	$V_{GS}=10V, I_D=30A$	-	6.8	8.5	m Ω
Dynamic Characteristics						
Forward Transconductance	g_{FS}	$V_{DS}=5V, I_D=30A$		66	-	S
Input Capacitance	C_{iss}	$V_{DS}=25V, V_{GS}=0V,$ $F=1.0\text{MHz}$		4400	-	PF
Output Capacitance	C_{oss}			340	-	PF
Reverse Transfer Capacitance	C_{rss}			260	-	PF
Total Gate Charge	Q_g	$V_{DS}=30V, I_D=30A,$ $V_{GS}=10V$		100	-	nC
Gate-Source Charge	Q_{gs}			20	-	nC
Gate-Drain Charge	Q_{gd}			30	-	nC
Switching times						
Turn-on Delay Time	$t_{d(on)}$	$V_{DD}=30V, I_D=2A, R_L=15\Omega$ $V_{GS}=10V, R_G=2.5\Omega$	-	17.8	-	nS
Turn-on Rise Time	t_r		-	11.8	-	nS
Turn-Off Delay Time	$t_{d(off)}$		-	56	-	nS
Turn-Off Fall Time	t_f		-	14.6	-	nS
Source- Drain Diode Characteristics						
Source-drain current(Body Diode)	I_{SD}		-	-	80	A
Pulsed Source-drain current(Body Diode)	I_{SDM}		-	-	320	A
Forward on voltage ^(Note 1)	V_{SD}	$T_j=25^\circ\text{C}, I_{SD}=30A, V_{GS}=0V$	-	-	1.2	V
Reverse Recovery Time ^(Note 1)	t_{rr}	$T_j=25^\circ\text{C}, I_F=75A, di/dt=100A/\mu s$	-	-	36	nS
Reverse Recovery Charge ^(Note 1)	Q_{rr}		-	-	56	nC
Forward Turn-on Time	t_{on}	Intrinsic turn-on time is negligible(turn-on is dominated by L_S+L_D)				

Notes

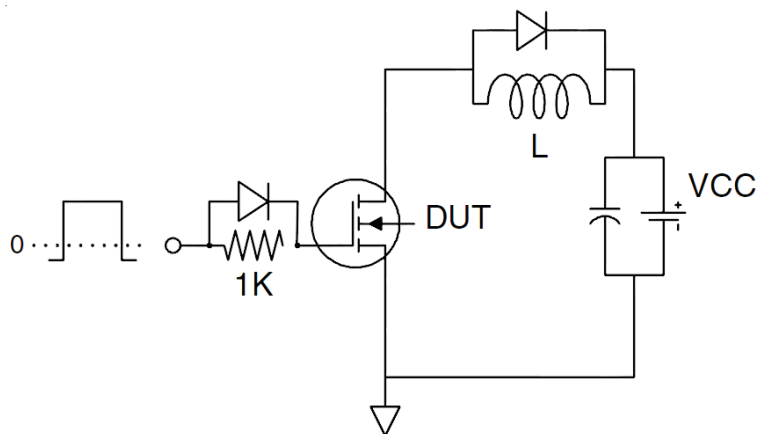
1. Pulse Test: Pulse Width $\leq 300\mu s$, Duty Cycle $\leq 1.5\%$, $R_G=25\Omega$, Starting $T_j=25^\circ\text{C}$

Test Circuit

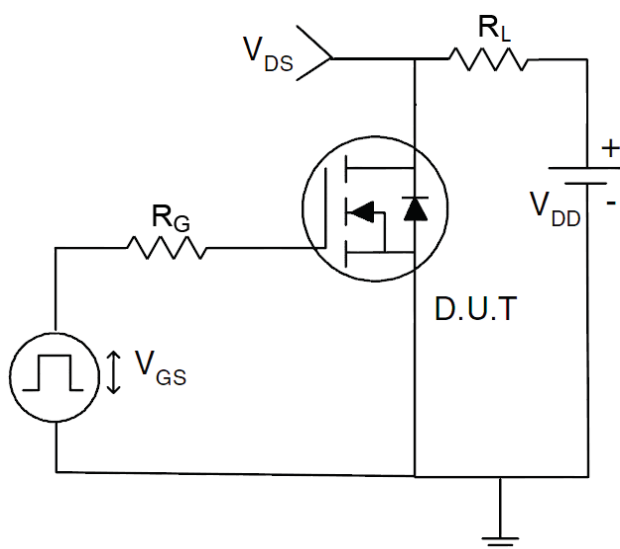
1) E_{AS} test circuit



2) Gate charge test circuit



3) Switch Time Test Circuit



RATING AND CHARACTERISTICS CURVES (RM60N75LD)

Figure1. Safe operating area

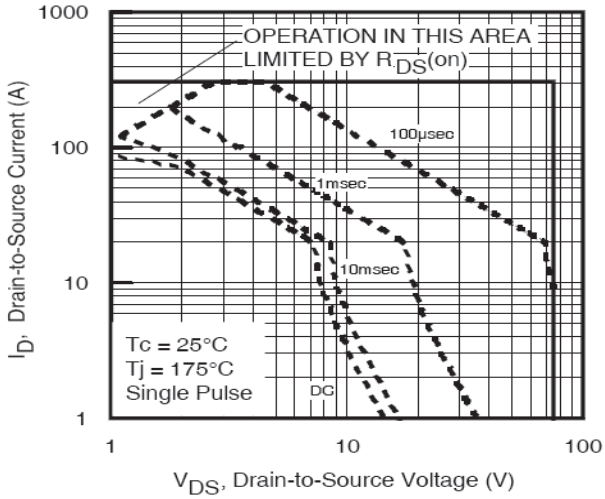


Figure2. Source-Drain Diode Forward Voltage

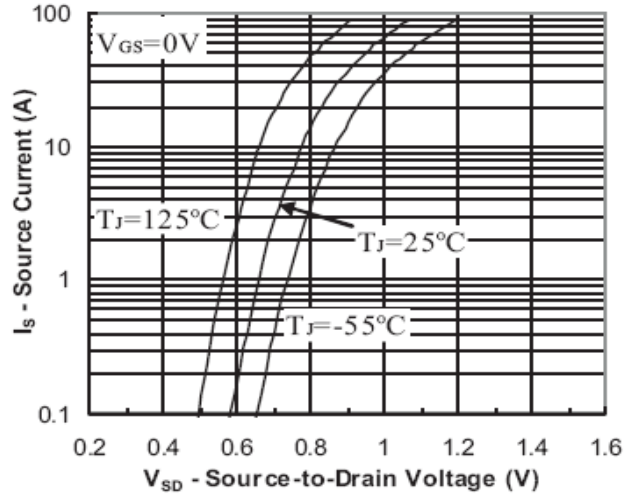


Figure3. Output characteristics

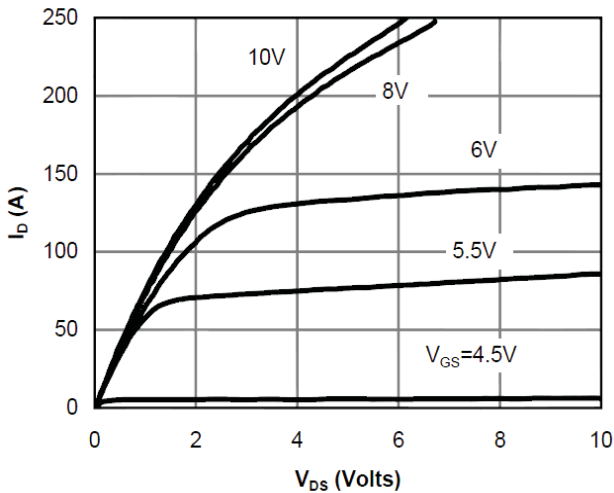


Figure4. Transfer characteristics

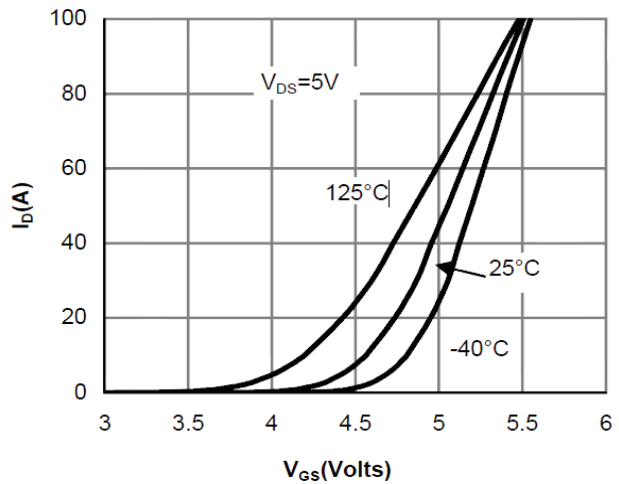


Figure5. Static drain-source on resistance

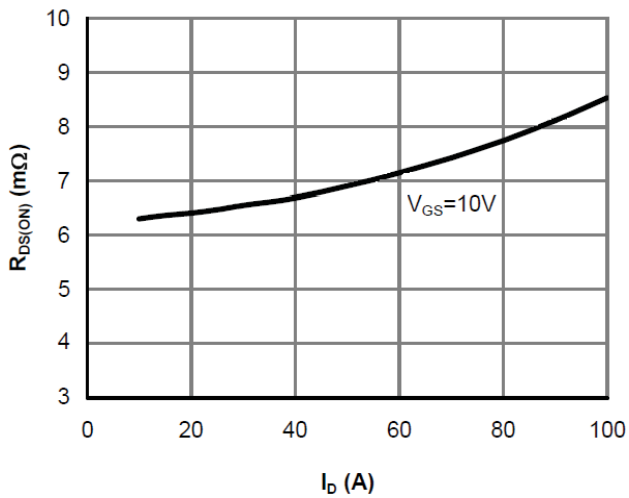
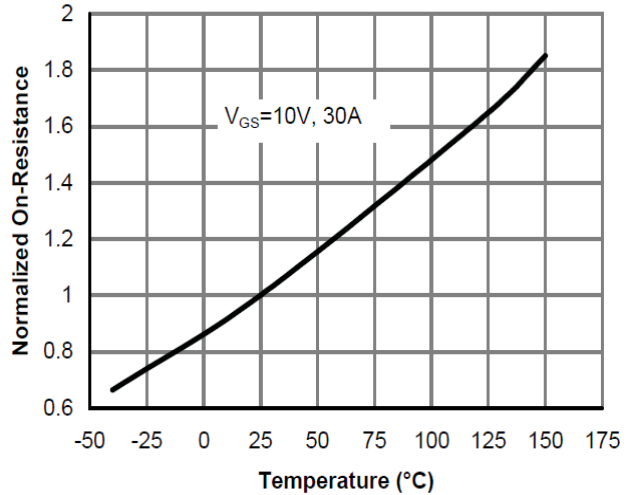


Figure6. $R_{DS(ON)}$ vs Junction Temperature



RATING AND CHARACTERISTICS CURVES (RM60N75LD)

Figure7. BV_{DSS} vs Junction Temperature

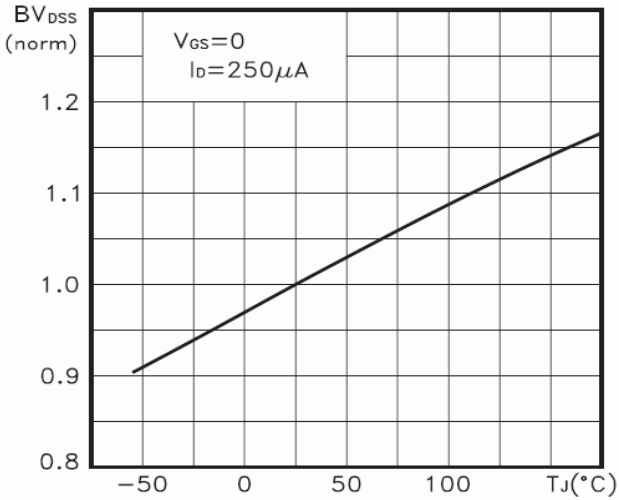


Figure8. $V_{GS(th)}$ vs Junction Temperature

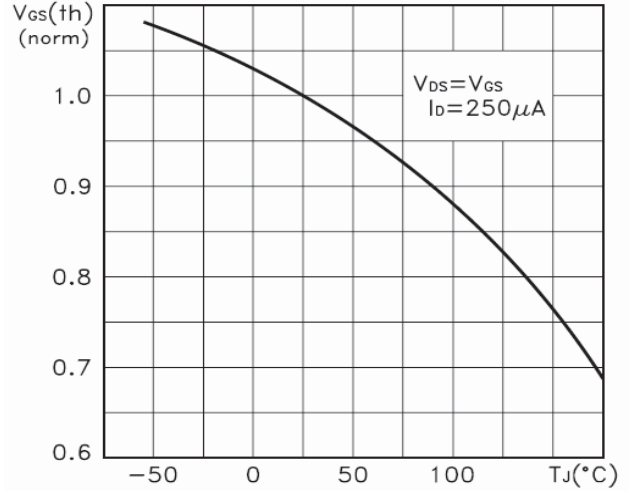


Figure9. Gate charge waveforms

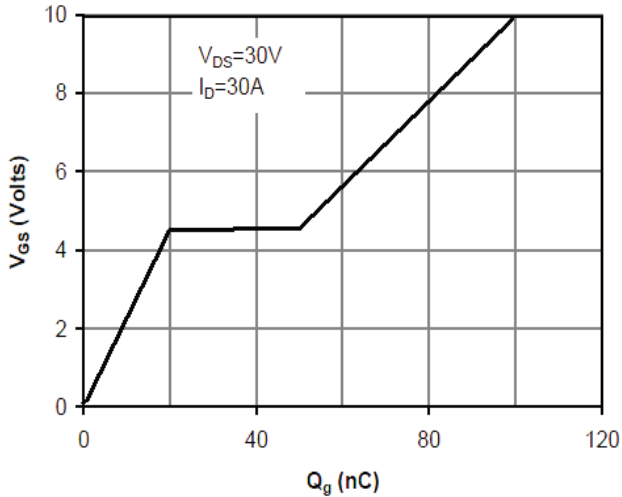


Figure10. Capacitance

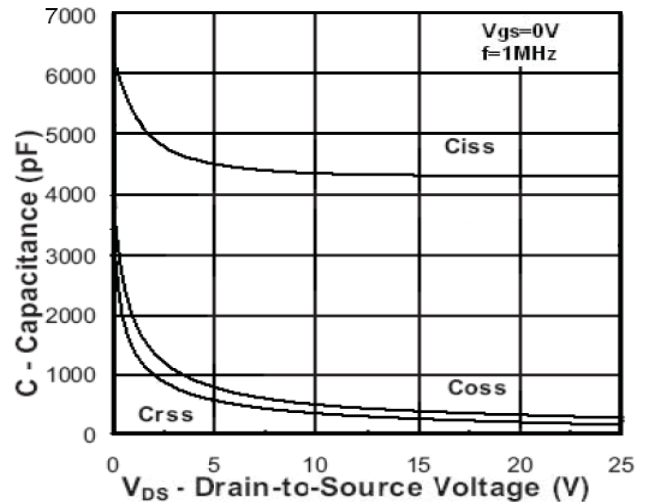
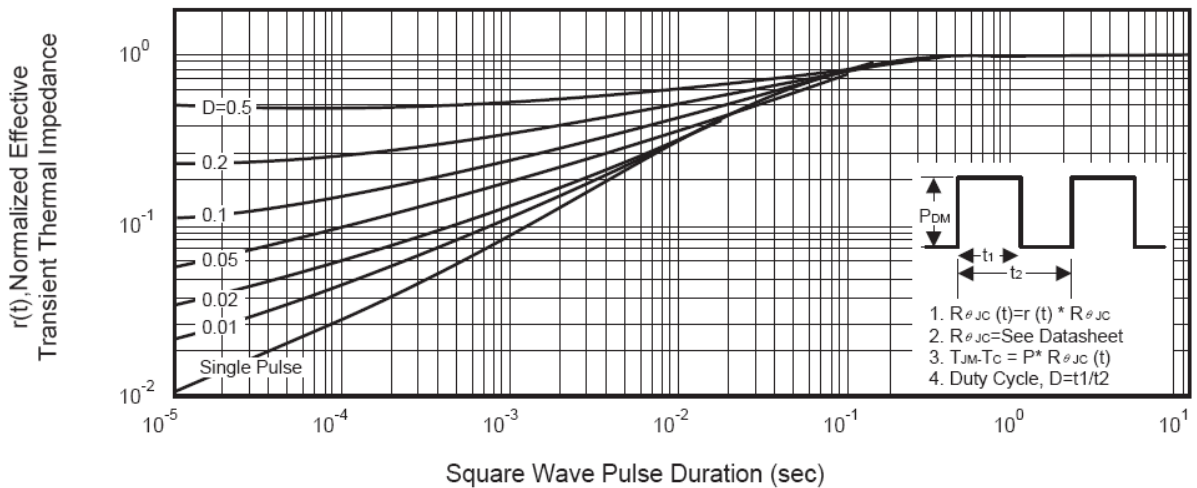


Figure11. Normalized Maximum Transient Thermal Impedance





RECTRON

Marking on the body



← Rectron Logo

6 0 N 7 5 ← Part No.

1 7 X X

Year – Code

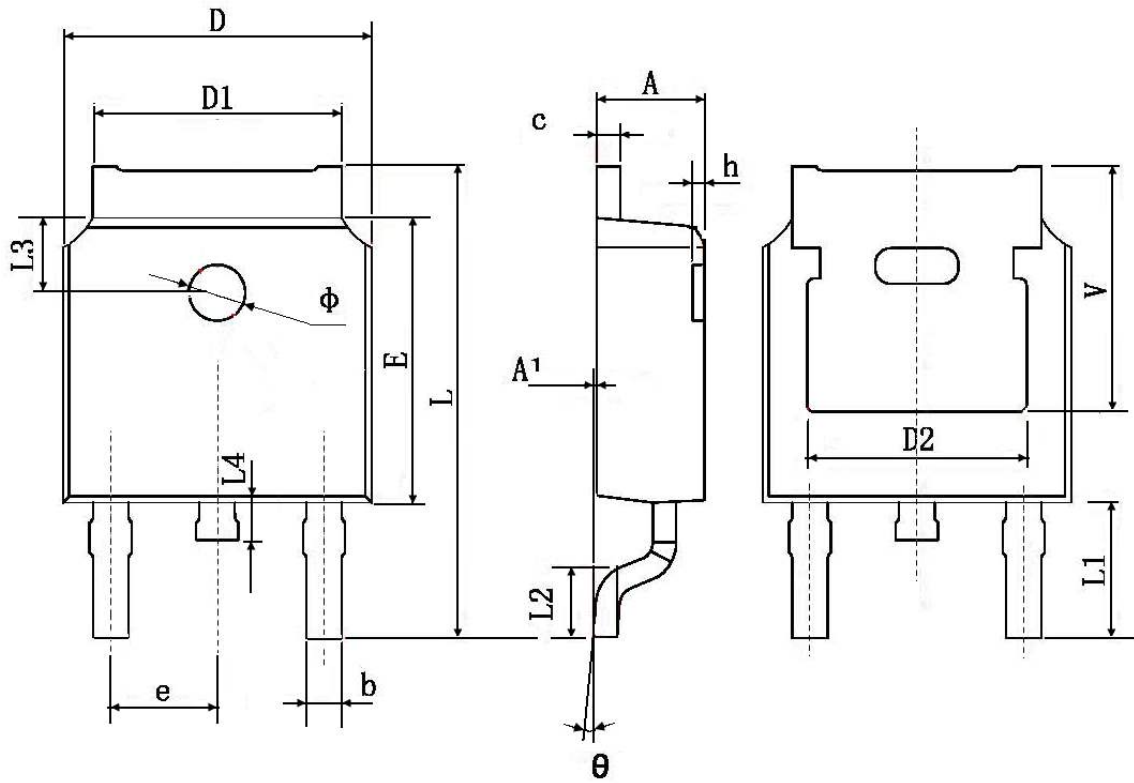
(Y:17-----2017

18-----2018.....)

Week – code

(WW:01~52)

TO-252 Package Information



Symbol	Dimensions In Millimeters		Dimensions In Inches	
	Min.	Max.	Min.	Max.
A	2.200	2.400	0.087	0.094
A1	0.000	0.127	0.000	0.005
b	0.660	0.860	0.026	0.034
c	0.460	0.580	0.018	0.023
D	6.500	6.700	0.256	0.264
D1	5.100	5.460	0.201	0.215
D2	4.830 TYP.		0.190 TYP.	
E	6.000	6.200	0.236	0.244
e	2.186	2.386	0.086	0.094
L	9.800	10.400	0.386	0.409
L1	2.900 TYP.		0.114 TYP.	
L2	1.400	1.700	0.055	0.067
L3	1.600 TYP.		0.063 TYP.	
L4	0.600	1.000	0.024	0.039
φ	1.100	1.300	0.043	0.051
θ	0°	8°	0°	8°
h	0.000	0.300	0.000	0.012
V	5.350 TYP.		0.211 TYP.	

DISCLAIMER NOTICE

Rectron Inc reserves the right to make changes without notice to any product specification herein, to make corrections, modifications, enhancements or other changes. Rectron Inc or anyone on its behalf assumes no responsibility or liability for any errors or inaccuracies. Data sheet specifications and its information contained are intended to provide a product description only. "Typical" parameters which may be included on RECTRON data sheets and/ or specifications can and do vary in different applications and actual performance may vary over time. Rectron Inc does not assume any liability arising out of the application or use of any product or circuit.

Rectron products are not designed, intended or authorized for use in medical, life-saving implant or other applications intended for life-sustaining or other related applications where a failure or malfunction of component or circuitry may directly or indirectly cause injury or threaten a life without expressed written approval of Rectron Inc. Customers using or selling Rectron components for use in such applications do so at their own risk and shall agree to fully indemnify Rectron Inc and its subsidiaries harmless against all claims, damages and expenditures.