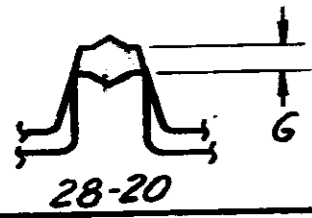


INACTIVE  
11/8/77

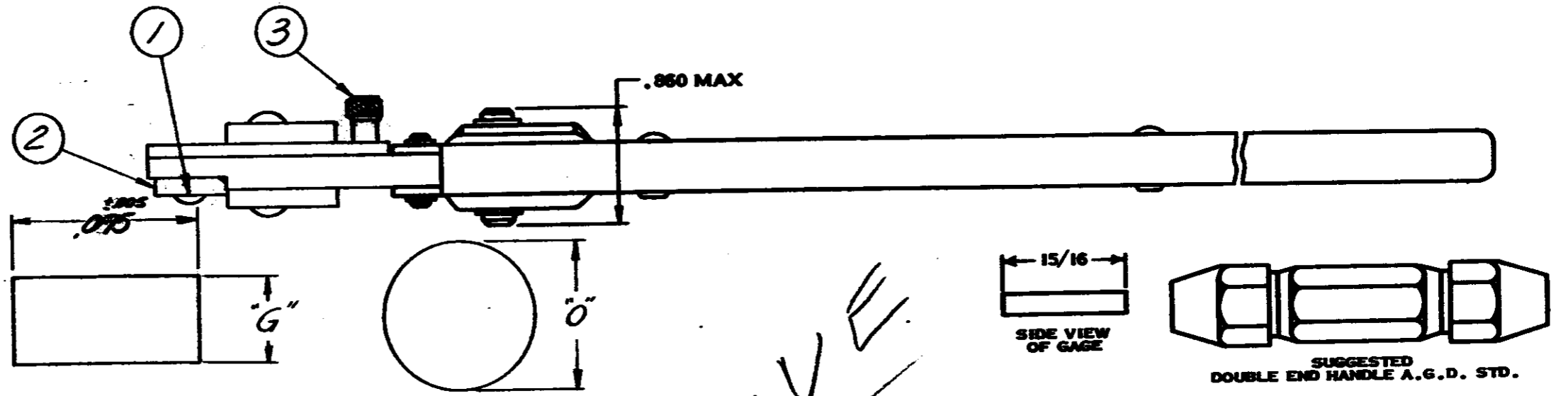
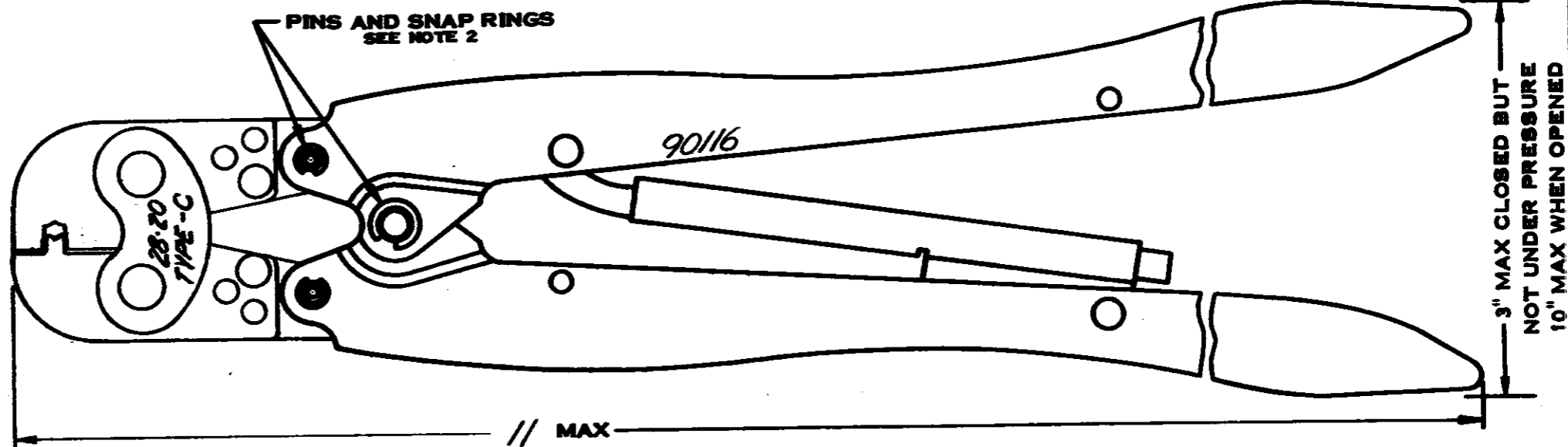
WIRE CRIMP				TERMINAL CRIMP HEIGHT
CRIMP SYMBOL	DIM	GO	NO GO	
28-20	0	0295	0425	0446 0414



INSULATION CRIMP				TERMINAL CRIMP HEIGHT
CRIMP SYMBOL	DIM	GO	NO GO	
28-20	G	0290	0570	H H

SEE NOTE #6

INACTIVE,  
REFER TO  
IS SHEET "7183"  
11/8/77



INSULATION CRIMP  
CRIMP SYMBOL 28-20  
WIRE CRIMP  
CRIMP SYMBOL 28-20

ENLARGED END VIEW OF GAGES

SEE I.S. - 7183

INACTIVE

SUGGESTED GAGE DESIGN

- CRIMP GAGE DIMENSIONS APPLY WHEN TOOL IS CLOSED OR BOTTOMED BUT NOT UNDER PRESSURE.
- FOR REPLACEMENT OF PARTS SUCH AS PINS AND SNAP RINGS. ORDER REPAIR KIT NO. 125218-4.
- FOR REPLACEMENT OF PARTS OTHER THAN PINS AND SNAP RINGS. TOOL IS TO BE RETURNED TO AMP INC. HARRISBURG, PENNA. TO INSURE PROPER CERTI-CRIMP ADJUSTMENT.
- FOR TOOL USAGE. SEE INSTRUCTION SHEET NO. 7183
- HAND TOOL CAN BE CHECKED BY MEASURING TERMINAL CRIMP HEIGHT.
- GAGE DIMENSIONS ARE MEASURED WITH INSULATION ADJUSTMENT PIN IN #1 POSITION.

NO.	REVISION	DATE	BY	CHK	DATE
A	INACTIVE RE. EDN HT-414	5-2	SS	4/8/77	

NO.	NUMBER	NAME	ITEM NO.
2	39207	ADJUSTMENT PIN	3
1	125083-6	LOCATOR	2
1	3-21016-6	SCREW	1

© 1965 BY AMP INCORPORATED. ALL RIGHTS RESERVED.  
AMP PRODUCTS COVERED BY PATENTS AND/OR PATENTS PENDING.

CUSTOMER COPY REFERENCE ONLY

MATERIAL-STEEL  
FINISH-BLACK OXIDE  
WEIGHT-1 LBS. 3 OZ.  
WIRE - RANGE - INSULATION TYPE

TOLERANCE EXCEPT AS NOTED  
SCALE  
LOC R B NO 90116  
REV A

DOUBLE ACTION HAND TOOL

DATE: 1/27/65  
DATE: 1/27/65  
DATE: 1/27/65

DIMENSIONS IN INCHES DO NOT SCALE PRINT