

4

3

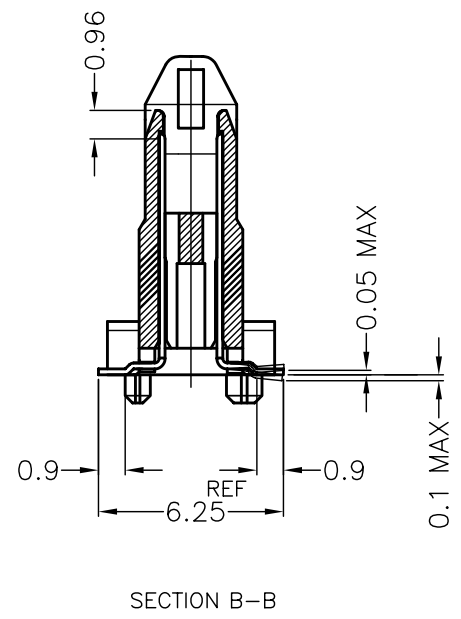
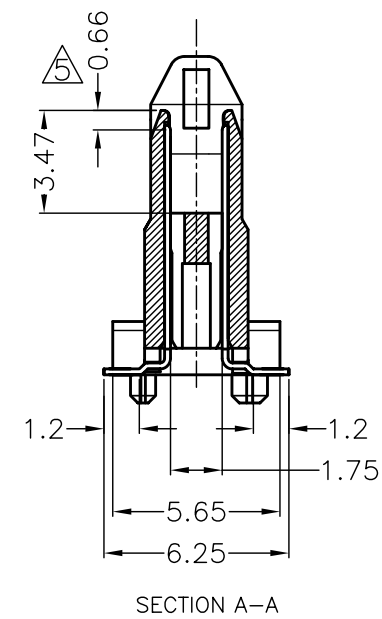
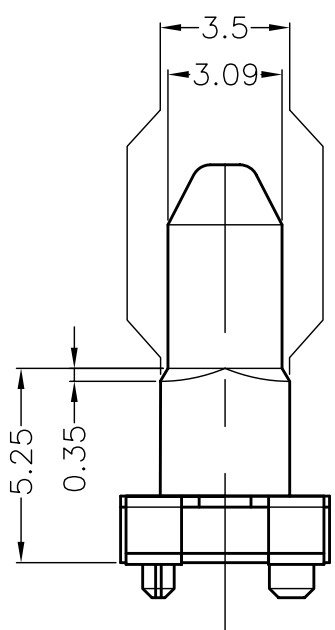
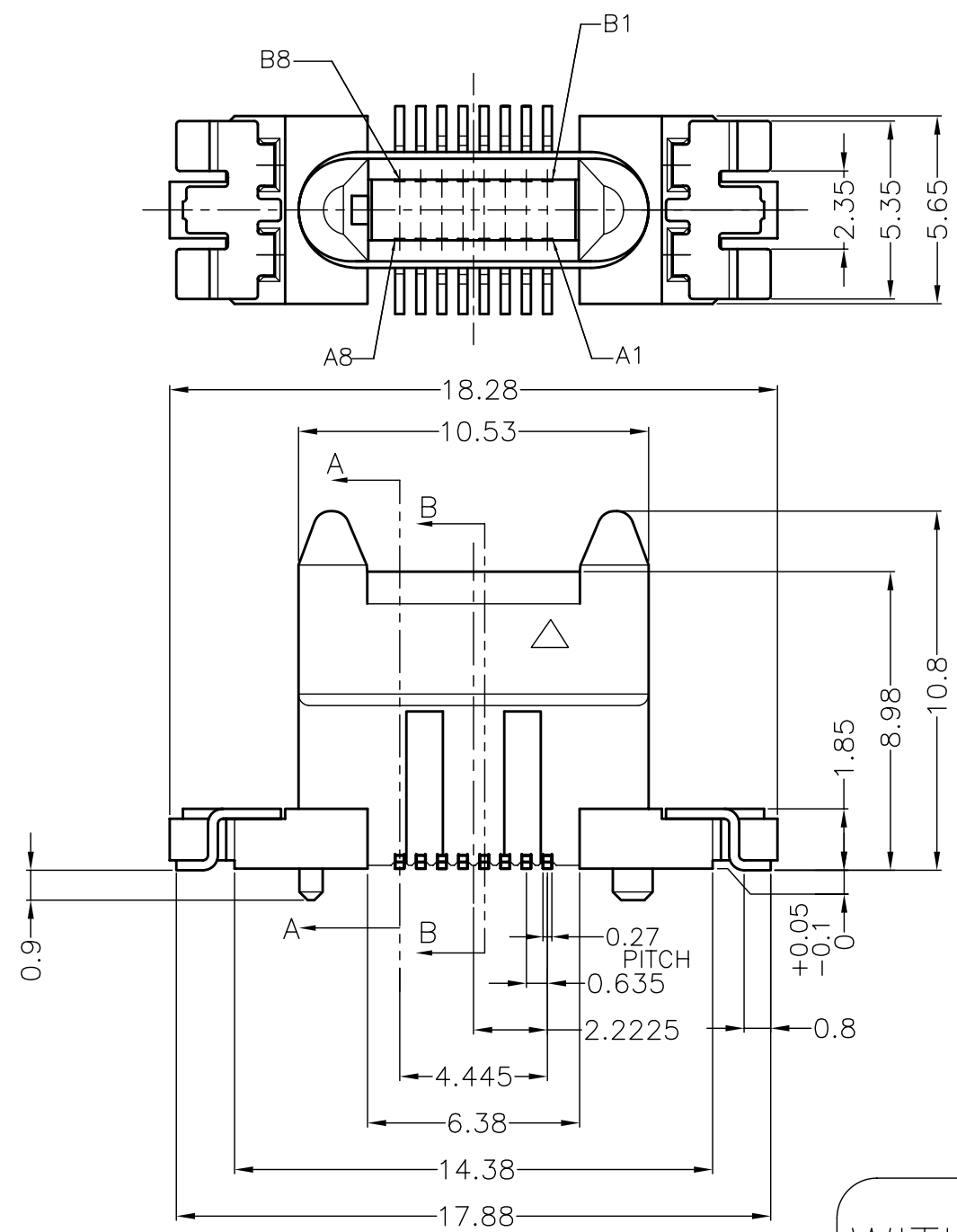
2

1

THIS DRAWING IS UNPUBLISHED. RELEASED FOR PUBLICATION
 © COPYRIGHT BY TYCO ELECTRONICS CORPORATION. ALL RIGHTS RESERVED.

LOC	DIST	REVISIONS			
P	LTR	DESCRIPTION	DATE	DWN	APVD
DW	/	F1	REVISED (ECR-09-003882)	19FEB09	B.W H.K

AS SHOWN; 2023089-1~3



WITHOUT CAP CONDITION

④	2023089-3
③	2023089-2
②	2023089-1
FINISH	P/N

1	CAP	④
2	SOLDER PEG	③
16	CONTACT	②
1	HOUSING	①
Q'TY	NAME	ITEM NO.

THIS DRAWING IS A CONTROLLED DOCUMENT.		DWN G.SHIH 02JAN08	Tyco Electronics Corporation Taipei, Taiwan	
DIMENSIONS: mm		CHK M.CHAO 18JAN08	NAME	
TOLERANCES UNLESS OTHERWISE SPECIFIED:		APVD H.KODAMA 18JAN08	ASSY	
0 PLC ± -	1 PLC ± ±0.25	PRODUCT SPEC	0.635mm PITCH BAY CONNECTOR, PLUG 16POS	
2 PLC ± -	3 PLC ± ±3°	APPLICATION SPEC	SIZE	CAGE CODE
4 PLC ± -	ANGLES ± -	WEIGHT	A3	00779
MATERIAL ①	FINISH SEE TABLE	CUSTOMER DRAWING	DRAWING NO	RESTRICTED TO
			2023089	
		SCALE	SHEET	REV
		5:1	1 of 4	F1

4

3

2

1

THIS DRAWING IS UNPUBLISHED.

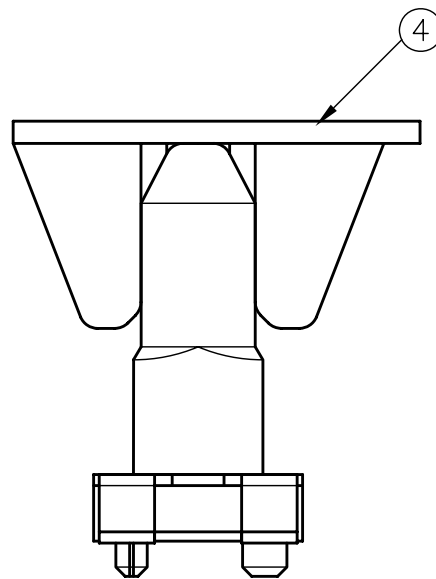
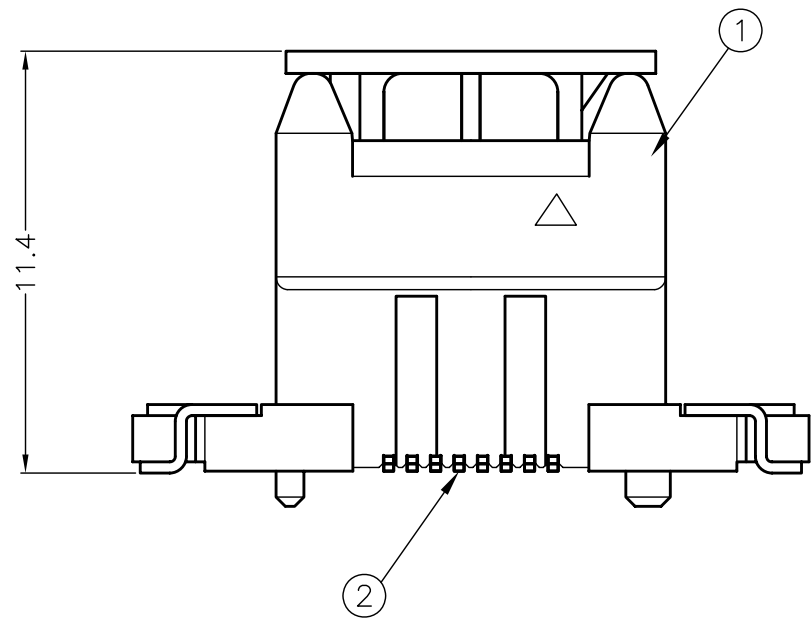
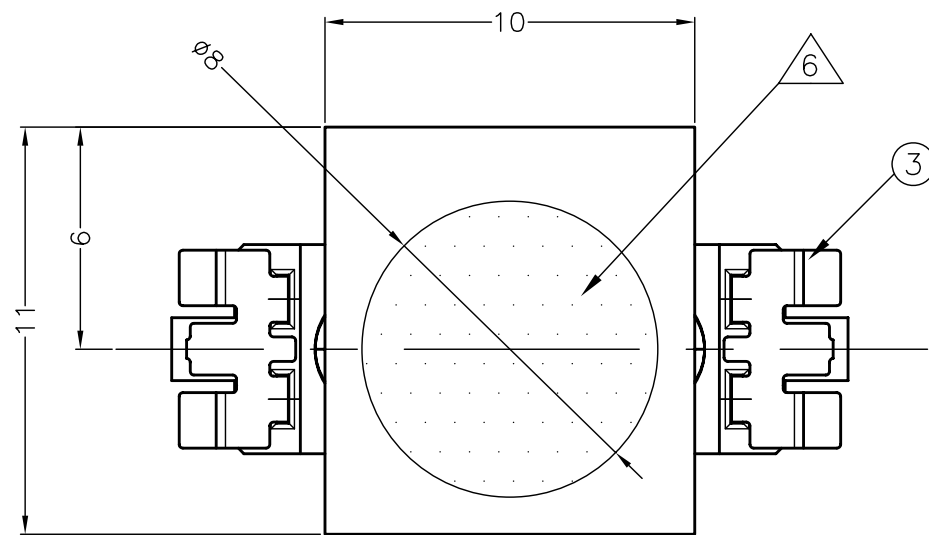
RELEASED FOR PUBLICATION

© COPYRIGHT BY TYCO ELECTRONICS CORPORATION.

ALL RIGHTS RESERVED.

LOC	DIST	REVISIONS				
P	LTR	DESCRIPTION	DATE	DWN	APVD	
		SEE SHEET 1				

AS SHOWN;2023089-1~3



NOTE

- ① MATERIAL: ① HOUSING: THERMO-PLASTIC(UL94V-0,BLACK)
② CONTACT: COPPER ALLOY
③ SOLDER PEG: COPPER ALLOY
④ CAP: THERMO-PLASTIC(UL94V-0,BLACK)
- ②.FINISH: CONTACT: ALL OVER Ni 0.002 MIN. UNDER PLATING.
Au 0.0002 MIN. PLATING ON CONTACT AREA.
MATTE Sn 0.001~0.003 PLATING ON TINE AREA
SOLDER PEG: ALL OVER Ni 0.0005 MIN. UNDER PLATING.
MATTE Sn 0.001~0.003 PLATING ON TINE AREA
- ③.FINISH: CONTACT: ALL OVER Ni 0.002 MIN. UNDER PLATING.
Au 0.00038 MIN. PLATING ON CONTACT AREA.
MATTE Sn 0.001~0.003 PLATING ON TINE AREA
SOLDER PEG: ALL OVER Ni 0.0005 MIN. UNDER PLATING.
MATTE Sn 0.001~0.003 PLATING ON TINE AREA
- ④.FINISH: CONTACT: ALL OVER Ni 0.002 MIN. UNDER PLATING.
Au 0.00076 MIN. PLATING ON CONTACT AREA.
MATTE Sn 0.001~0.003 PLATING ON TINE AREA
SOLDER PEG: ALL OVER Ni 0.0005 MIN. UNDER PLATING.
MATTE Sn 0.001~0.003 PLATING ON TINE AREA
- 5. APPLIED POS. No. A7,A8,B7,B8
- 6. PICK & PLACE VACUUM AREA
- 7. NET WEIGHT: 0.8g

WITH CAP CONDITION

THIS DRAWING IS A CONTROLLED DOCUMENT.		DWN	Tyco Electronics Corporation Taipei,Taiwan		
DIMENSIONS: mm		CHK	NAME ASSY 0.635mm PITCH BAY CONNECTOR, PLUG 16POS		
TOLERANCES UNLESS OTHERWISE SPECIFIED: 0 PLC ± - 1 PLC ± - ±0.25 2 PLC ± - 3 PLC ± - ±3° 4 PLC ± - ANGLES ± -		APVD	PRODUCT SPEC		
MATERIAL		FINISH	APPLICATION SPEC	SIZE	RESTRICTED TO
			WEIGHT	CAGE CODE	DRAWING NO
			CUSTOMER DRAWING	A3 00779	2023089
			SCALE	SHEET	REV
			5:1	2 OF 4	F1

4

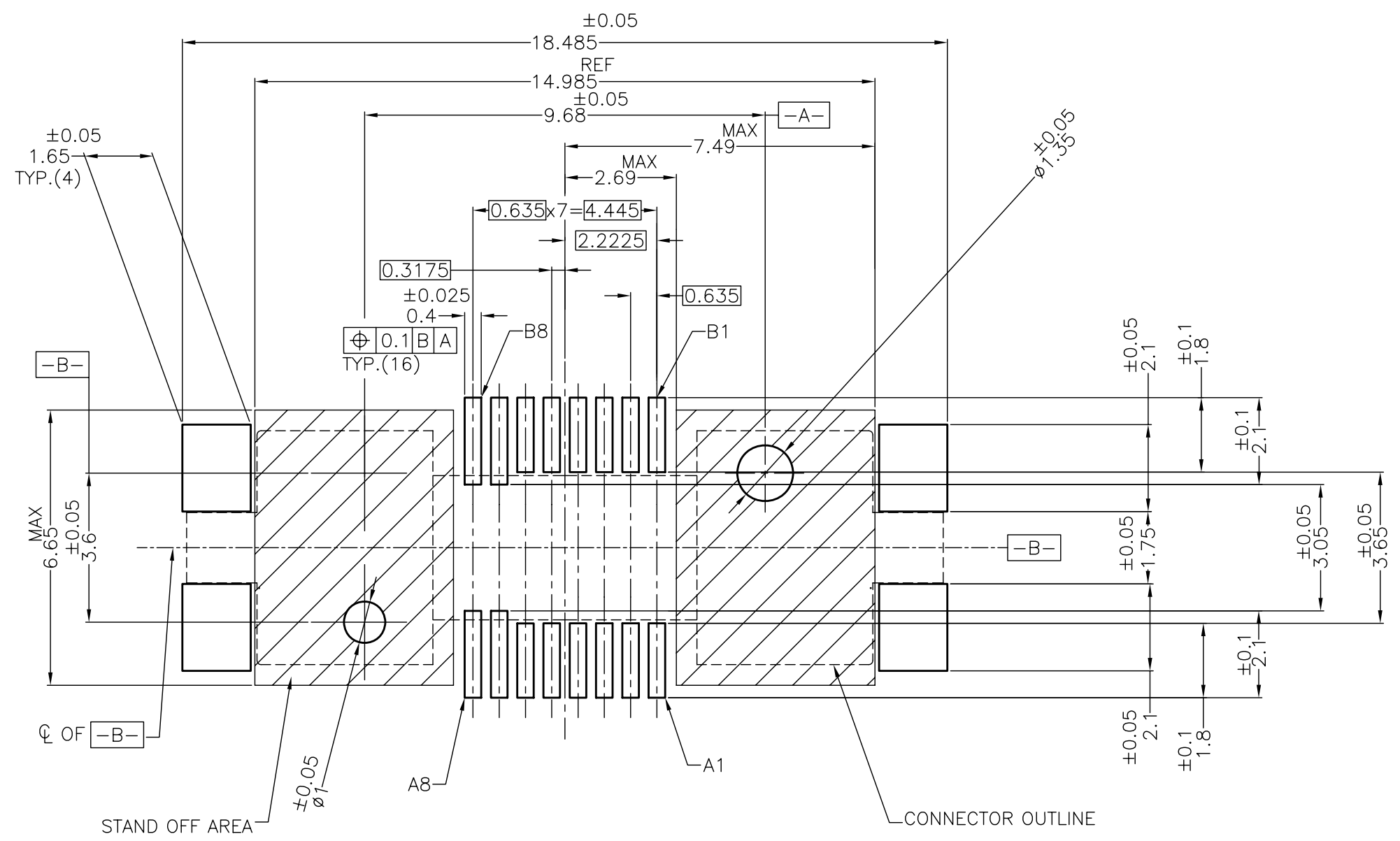
3

2

1

THIS DRAWING IS UNPUBLISHED. RELEASED FOR PUBLICATION
 © COPYRIGHT BY TYCO ELECTRONICS CORPORATION. ALL RIGHTS RESERVED.

LOC	DIST	REVISIONS			
P	LTR	DESCRIPTION	DATE	DWN	APVD
DW		SEE SHEET 1	-	-	-



RECOMMENDED P.C BOARD LAYOUT
(REFERENCE)

THIS DRAWING IS A CONTROLLED DOCUMENT.		DWN		Tyco Electronics Corporation Taipei, Taiwan																											
DIMENSIONS: mm		TOLERANCES UNLESS OTHERWISE SPECIFIED:		NAME																											
<table border="1"> <tr><td>0 PLC</td><td>± -</td></tr> <tr><td>1 PLC</td><td>± -</td></tr> <tr><td>2 PLC</td><td>± - ±0.05</td></tr> <tr><td>3 PLC</td><td>± -</td></tr> <tr><td>4 PLC</td><td>± -</td></tr> <tr><td>ANGLES</td><td>± -</td></tr> </table>		0 PLC	± -	1 PLC	± -	2 PLC	± - ±0.05	3 PLC	± -	4 PLC	± -	ANGLES	± -	<table border="1"> <tr><td>CHK</td><td>-</td></tr> <tr><td>APVD</td><td>-</td></tr> <tr><td>PRODUCT SPEC</td><td>-</td></tr> <tr><td>APPLICATION SPEC</td><td>-</td></tr> <tr><td>WEIGHT</td><td>-</td></tr> </table>		CHK	-	APVD	-	PRODUCT SPEC	-	APPLICATION SPEC	-	WEIGHT	-	<table border="1"> <tr><td colspan="2">ASSY</td></tr> <tr><td colspan="2">0.635mm PITCH BAY CONNECTOR, PLUG 16POS</td></tr> </table>		ASSY		0.635mm PITCH BAY CONNECTOR, PLUG 16POS	
0 PLC	± -																														
1 PLC	± -																														
2 PLC	± - ±0.05																														
3 PLC	± -																														
4 PLC	± -																														
ANGLES	± -																														
CHK	-																														
APVD	-																														
PRODUCT SPEC	-																														
APPLICATION SPEC	-																														
WEIGHT	-																														
ASSY																															
0.635mm PITCH BAY CONNECTOR, PLUG 16POS																															
MATERIAL		FINISH		SIZE	RESTRICTED TO																										
				A3	-																										
				CAGE CODE	DRAWING NO																										
				00779	2023089																										
		CUSTOMER DRAWING		SCALE	SHEET																										
				8:1	3 of 4																										
				REV	F1																										

4

3

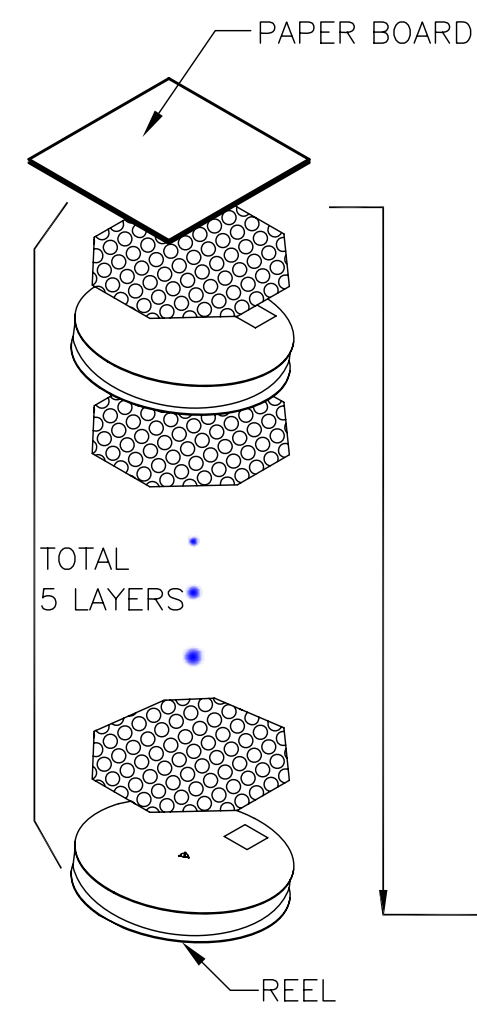
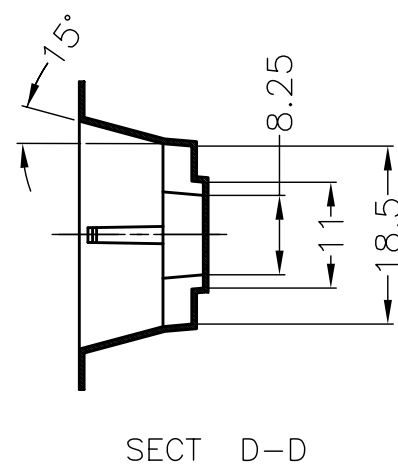
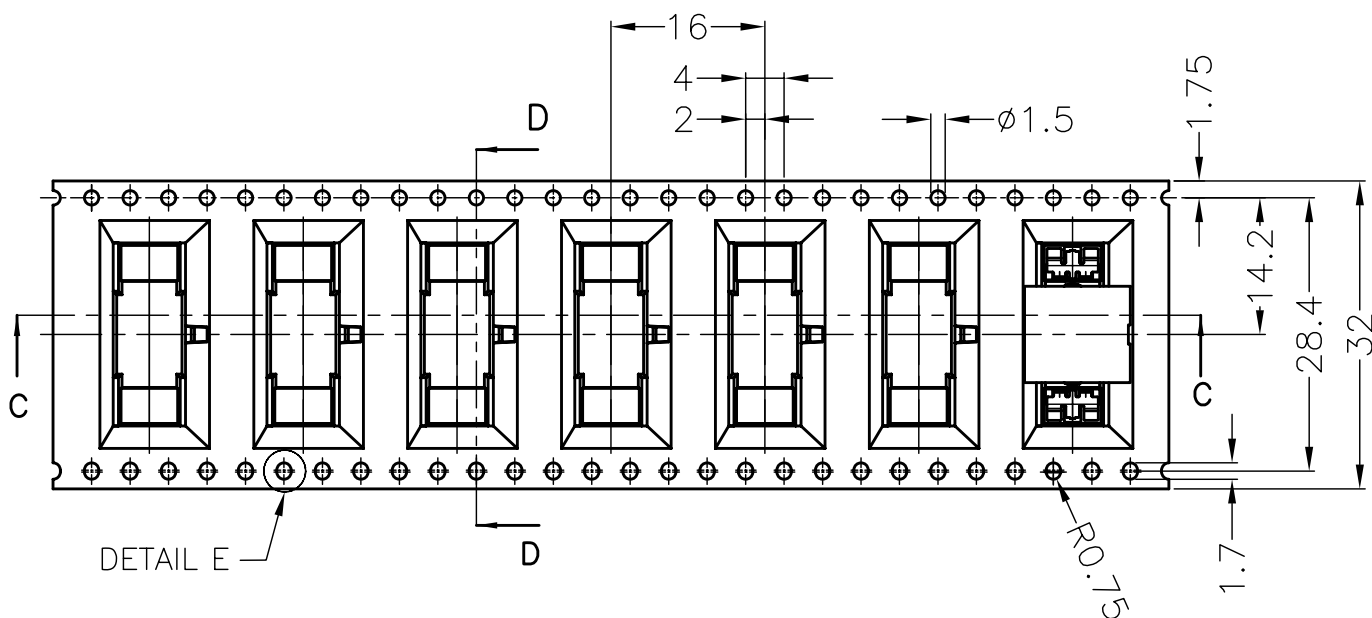
2

1

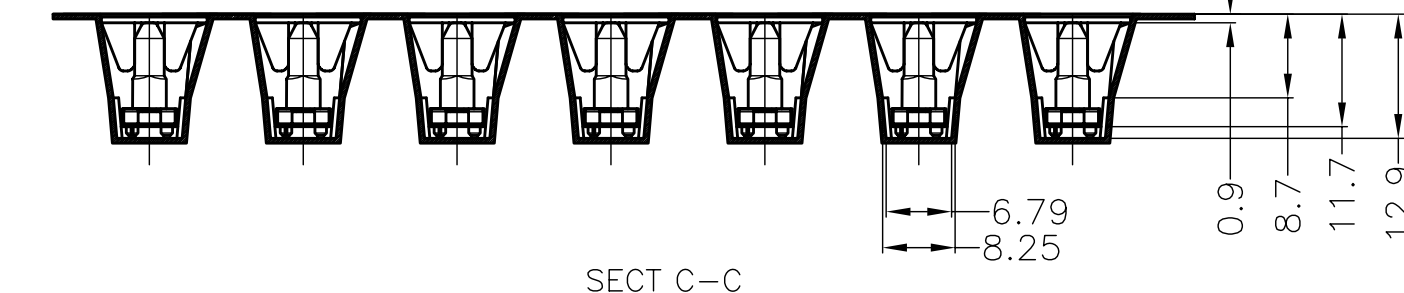
THIS DRAWING IS UNPUBLISHED. RELEASED FOR PUBLICATION

© COPYRIGHT BY TYCO ELECTRONICS CORPORATION. ALL RIGHTS RESERVED.

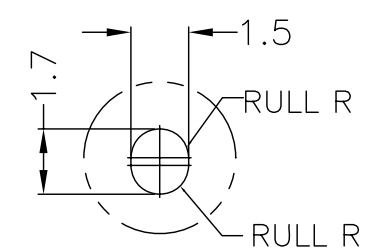
LOC	DIST	REVISIONS				
P	LTR	DESCRIPTION	DATE	DWN	APVD	
DW		SEE SHEET 1	-	-	-	



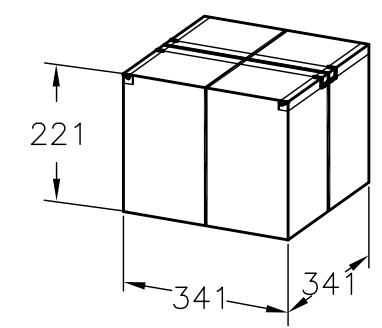
TOTAL 5 LAYERS



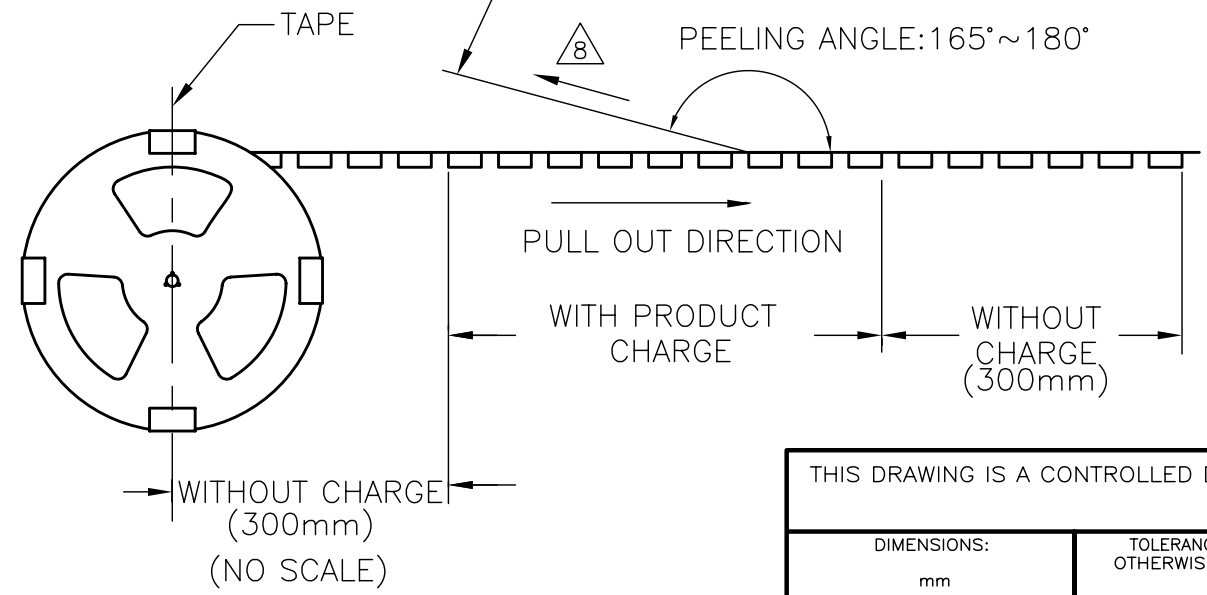
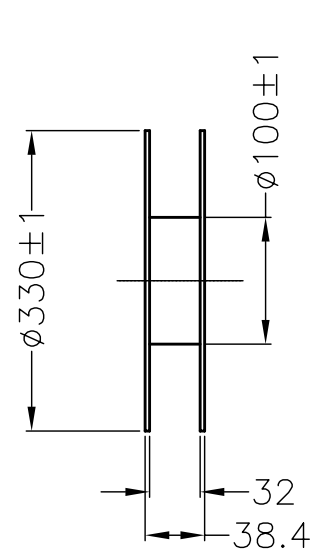
SECT C-C



DETAIL E (SCALE 4:1)



AROUND THE OUTER PERIPHERY IN A TURN. WEEDING THE COVER TAPE
 PEELING ANGLE: 165°~180°



PEELING STRENGTH OF COVER TAPE: 0.2N ~ 1.2N
 9. PACKING MATERIAL: CARRY TAPE: PS; COLOR: BLACK
 COVER TAPE: PET; COLOR: CLEAR

3.2	0.813	250	5	1250
G/W (Kg)	N/W (Kg)	PCS/TAPE	REELS/CARTON	TOTAL QUANTITY (PCS)

THIS DRAWING IS A CONTROLLED DOCUMENT.		Tyco Electronics Corporation Taipei, Taiwan	
DIMENSIONS: mm TOLERANCES UNLESS OTHERWISE SPECIFIED: 0 PLC ± - 1 PLC ± - 2 PLC ± - 3 PLC ± - 4 PLC ± - ANGLES ± - MATERIAL FINISH		NAME: ASSY 0.635mm PITCH BAY CONNECTOR, PLUG 16POS SIZE: A3 CAGE CODE: 00779 DRAWING NO: 2023089 RESTRICTED TO:	
CUSTOMER DRAWING		SCALE: NON	SHEET: 4 of 4