

Customer Information Sheet

DRAWING No.: Z80-280

SHEET 2 OF 2

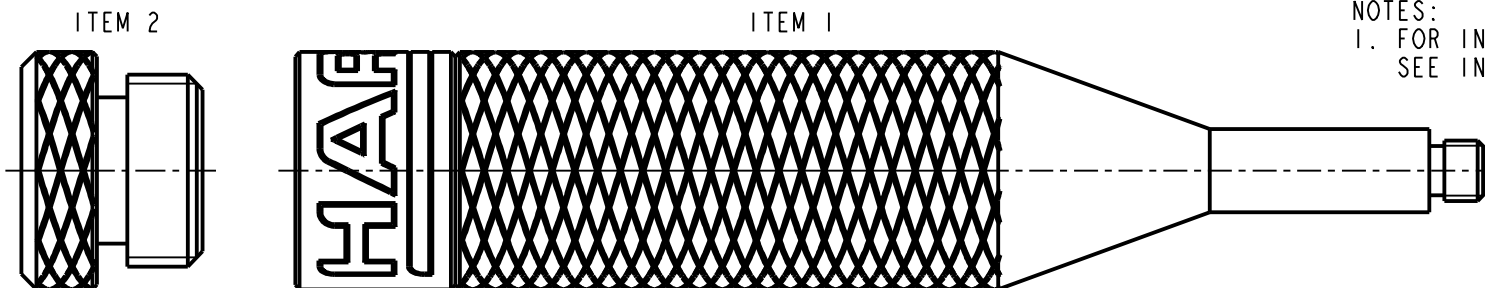
IF IN DOUBT - ASK

©

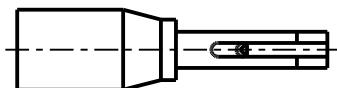
NOT TO SCALE

THIRD ANGLE PROJECTION

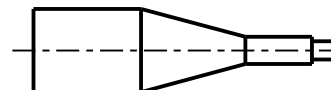
ALL DIMENSIONS IN mm



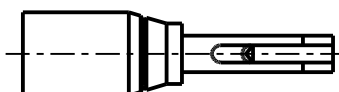
NOTES:
1. FOR INSTRUCTION SPECIFICATIONS
SEE INSTRUCTION SHEET IS-25.



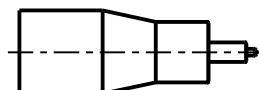
ITEM 3



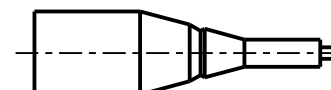
ITEM 6



ITEM 4



ITEM 5



ITEM 7

ITEM NUMBER	DESCRIPTION
1	CONTACT INSERTION/EXTRACTION TOOL HOLDER (BODY)
2	CONTACT INSERTION/EXTRACTION TOOL HOLDER (CAP)
3	CONTACT INSERTION TOOL (FOR INSULATION UP TO $\varnothing 0.09\text{mm}$)
4	CONTACT INSERTION TOOL (FOR INSULATION $\varnothing 0.9$ TO $\varnothing 1.1\text{mm}$)
5	FEMALE CONTACT EXTRACTION TOOL (L-TEK & J-TEK)
6	L-TEK MALE CONTACT EXTRACTION TOOL
7	J-TEK MALE CONTACT EXTRACTION TOOL

MSP	7	17.08.15	13050
NAME	ISS.	DATE	C/NOTE
APPROVED: M.PERREN			
CHECKED: M.PLESTED			
DRAWN: N. CODLING			
CUSTOMER REF.:			
ASSEMBLY DRG:			

HARWIN

www.harwin.com
technical@harwin.com

THIS DRAWING AND ANY INFORMATION OR DESCRIPTIVE MATTER SET OUT HEREON ARE CONFIDENTIAL AND COPYRIGHT PROPERTY OF THE HARWIN GROUP AND MUST NOT BE DISCLOSED, LOANED, COPIED OR USED FOR MANUFACTURING, TENDERING OR FOR ANY OTHER PURPOSE WITHOUT THEIR WRITTEN PERMISSION.

TOLERANCES

X. = $\pm 1\text{mm}$
 X.X = $\pm 0.50\text{mm}$
 X.XX = $\pm 0.10\text{mm}$
 X.XXX = $\pm 0.01\text{mm}$
 ANGLES = $\pm 5^\circ$
 UNLESS STATED

MATERIAL:

SEE ABOVE

FINISH:

S/AREA:

mm²

TITLE:

DATAMATE CRIMP CONTACT
INSERTION/REMOVAL TOOL KIT

DRAWING NUMBER:

Z80-280

SHT

2 OF 2